

# PASCAS PARK

## Tree of Life Journey of Man



*“Peace And Spirit Creating Alternative Solutions”*

**PASCAS FOUNDATION (Aust) Ltd**  
**ABN 23 133 271 593**

**Queensland, Australia**

**Pascas Foundation is a not for profit organisation**

**Em: [info@pascasworldcare.com](mailto:info@pascasworldcare.com)**  
**Em: [info@pascashealth.com](mailto:info@pascashealth.com)**

**[www.pascasworldcare.com](http://www.pascasworldcare.com) [www.pascashealth.com](http://www.pascashealth.com)**

## PASCAS INTRODUCTION:

Documents assembled by Pascas are provided for your individual assessment and exploration. The contents are sourced from a variety of avenues and publications. Every endeavour is made to determine that the contents are of the highest level of truth and veracity. At all times we ask that you go within yourself, to ascertain for yourself, how the contents resonate with you.

Pascas provides these notes and observations to assist us all in the development and growth of our own pathways and consciousness. Pascas does not hold these contents as dogma. Pascas is about looking within oneself. Much of what we are observing is new to us readers and thus, we consider that you will take on board that which resonates with you, investigate further those items of interest, and discard that which does not feel appropriate to you.

Kinesiological muscle testing, as developed by Dr David R Hawkins and quantified by his Map of Consciousness (MOC) table, has been used to ascertain the possible level of truth of documents. Such tested calibration levels appear within the document. We ask that you consider testing same for yourself. The technique and process is outlined within Pascas documents, such as Pascas Care – Energy Level of Food. From each person's perspective, results may vary somewhat. The calibration is offered as a guide only and just another tool to assist in considering the possibilities. As a contrast, consider using this technique to test the level of truth of your local daily newspaper.

Contents are not to be interpreted as an independent guide to self-healing. The information sourced herein is not from a doctor or doctors, and any information provided in this document should not be in lieu of consultation with your physician, doctor, or other health care professional. Pascas, nor anyone associated with this document, does not assume any responsibility whatsoever for the results of any application or use of any process, technique, compound or potion as described within this document.

The sources of contents are noted throughout the document. In doing so, we acknowledge the importance of these sources and encourage our readers to consider further these sources. Should we have infringed upon a copyright pertaining to content, graphics and or pictures, we apologise. In such cases, we will endeavour to make the appropriate notations within the documents that we have assembled as a service via our not for profit arm, to our interested community.

We offer all contents in love and with the fullness of grace, which is intended to flow to readers who join us upon this fascinating journey throughout this incredible changing era we are all experiencing.

Living Feelings First, *John.*



**By living true to ourselves, true to our feelings, we are living true to God. It's that simple.**



## OUR FIRST TEACHERS:

Descendants of Andon and Fonta (also called Aman and Amon), our First Parents, not being Adam and Eve, delivered teachings that were faithfully memorised and later recorded as the SACRED and INSPIRED WRITINGS. Through later generations, writings were progressively preserved via way of hieroglyphic symbols that are the basis for the writings on temples in Mexico, South America, Cambodia, India and Egypt. Six sets, each of about 10,000 tablets, were carried from Mu (Lemuria), these were then located at: Tibet, Deccan Plateau in central India, Gobi Desert in Central China, Upper Egypt, Babylon in Mesopotamia and Mexico City. Further copies of each of these original sets were further made.

However, from the teachings of the leaders of the Rebellion, 200,000 years ago, stem all of the world's major spiritual and religious teachings, all being in error and contaminating the sacred and inspired writings, all suppressing one's soul based loving and truth based feelings and bringing about dependence upon one's erroneous mind. BC=BCE AD=CE

Note: Lunar cycles were considered years, then seasons as years.

First Parents, Andon & Fonta, also known as Aman & Amon 1,000,000 years ago  
 As a result of Lemuria (Mu) we have Sacred Inspired Writings 300,000 BC (Chaldi College)  
 As a result of Master & Mistress Lucifer we have the Rebellion 200,000 BC  
 As a result of Adam & Eve we have the Default 38,000 BC  
 As a result of Osiris, we have Osirian 20,000 BC (born in Atlantis)  
 As a result of Thoth, we have Osirian in Lower Egypt 14,000 BC (coming from Atlantis)  
 As a result of Krishna, we have Hinduism 3,228 BC (birth dates)  
 As a result of Abraham, we have Judaism 1,750 BC (+/- 250 years)  
 As a result of Moses, we have Judaism and Moses books 1,200 BC (approximately)  
 As a result of Zarathushtra, we have Zoroastrianism 630 BC he lived for 242/4 years  
 As a result of Lao Tzu, we have Taoism 604 BC  
 As a result of Varadhamana Mahavira we have Jainism 599 BC he lived for 72 years  
 As a result of Buddha, we have Buddhism 560 BC  
 As a result of Confucius, we have Confucism 551 BC  
 As a result of Jesus via Paul we have Christianity born August 7 BC died age 35, March 29CE  
 Mary of Magdalene, born 2 BC, died age 48, and Jesus of Nazareth, both born free from error.  
 As a result of Mohammed, we have Islam 570 AD  
 As a result of Topiltzin Ce Acatl Quetzalcoatl –Toltecs Lord 923 AD to 947 AD period of reign  
 As a result of Hiawatha we have Iroquois Confederacy 1550 AD  
 As a result of the Second Coming we have Divine Love and then Feeling Healing  
 which with Divine Love then is Soul Healing 31 May 1914 AD to around the 2040's  
 As a result certain restrictions of the Rebellion and Default are now lifted.

From the above ancient clay tablets can be found the Lord's Prayer and the Ten Commandments, though there were 42, Moses was a practical man and condensed them. Also Moses five books are derived from the ancient clay tablets, possibly the set that was in the southern region of Egypt. Those writings had been heavily contaminated by the teachings resulting from the Rebellion.

By longing for the truth of one's feelings and for our Heavenly Parents' Love is the way forward.

The **Books of the Golden Age** was penned by Col James Churchward in 1927 and published in 1997. The first Book within this one book, being Book 1 is titled “The Sacred & Inspired Writings of Mu” and the book is not in print in as much it is a photocopy of Churchward’s hand written book.

Col James Churchward (born in 1851, died in 1936) spent seven years in India being trained by his dear Rishi friend in how to read the clay tablets that originated in the Lost Continent of Mu (Churchward published a book by this title also). From this training, Churchward realized that he could read the hieroglyphics on most ancient structures from around the world.

The ancients in Mu dated their clay tablets by imprinting on various clay tablets the position of constellations in the sky, thus the dating of them is easy for those with an astrological background.

In all, some 10,000 clay tablets make up a set, thus the amount of information within them is enormous. These clay tablets date back prior to 70,000BC. We expect that work is currently underway in India to decipher a set of these ancient clay tablets and make the records available for all.

The question we have asked ourselves is if the truth is always the same, then their must be an original realization of such truths and that such realizations must be the foundation of the teachings of all the Great Avatars. Thus there is only one fundamental truth or platform of truth from which all spiritual teachings emanate from. Unfortunately we have managed to segregate that into more than 100,000 religions worldwide. All religions appear to stem from the spiritual platform of “The Law of One”. There are more than 23,000 Christian churches! Yet there is only one spiritual platform of truth.



**LEMURIA – TREE of LIFE 70,000BC:**

P. 161 The Books of the Golden Age by Col James Churchward

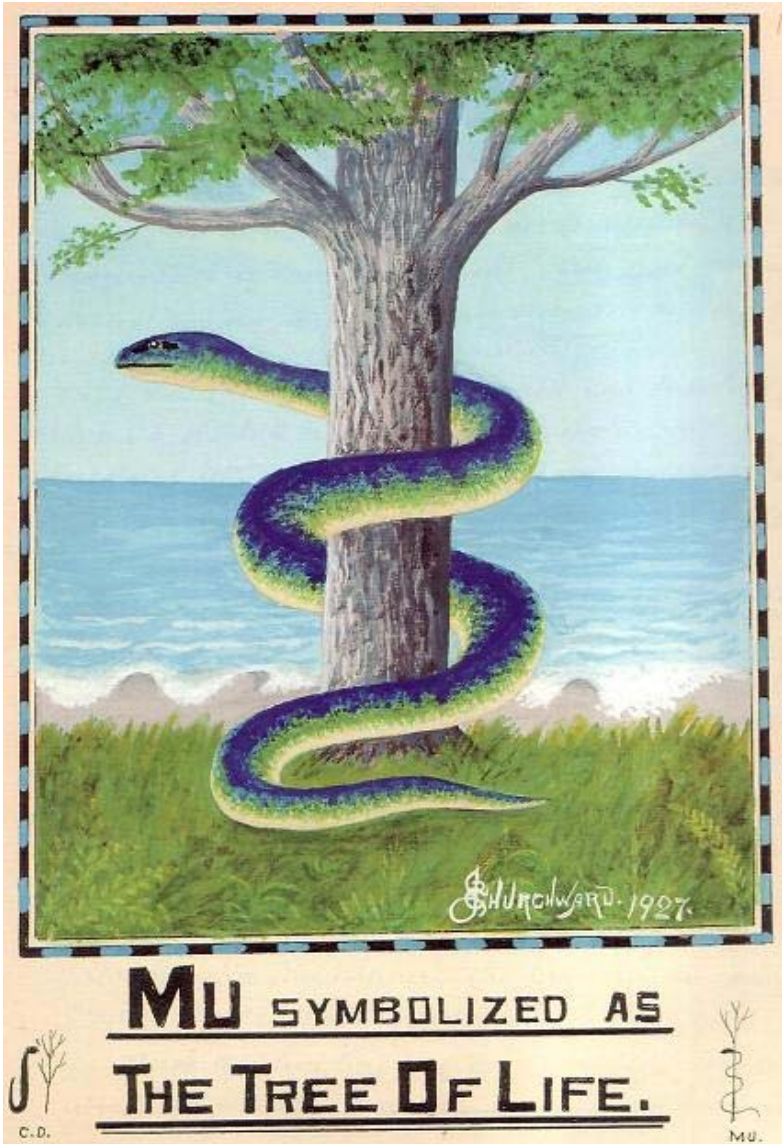
The “**Tree of Life**” was a name often given to Mu by the ancients. This tree did not refer to vegetation but to a land, a country, the Land of Mu.

Man’s advent was in Mu. Man was the fruit of that tree. Man only has an enduring everlasting life and then only. The man that gift from God. The ancients looked upon everything that was perishable as not being actual life but temporary houses. They maintained actual life cannot die. So as man only has actual life and his advent on Earth was in the Land of Mu – Mu was considered the Tree which bore life – the Tree of Life.

In the ancient writing tens of thousands of years before Ezra compiled the Bible, the Tree of Life is shown with a serpent coiled around it. This serpent is unadorned and when found in colours its back is blue, sides green and belly yellow. This was the symbol for the waters.

In their vignettes the serpent is pictured coiled around Mu – the Tree of Life, thus symbolising that Mu was surrounded by water, having no land connections with other continents.

Without doubt this was one of the symbols which Ezra could not comprehend. He saw the tree with the serpent coiled around it. Not comprehending the significance of the serpent, he built a bridge to cross the obstruction. In making it out to be the Tree of Life he was correct, the serpent however he did not understand and wrongly applied it. The mythical temptations of the serpent is the bridge.



**KRYON:**

[http://www.kryon.com/k\\_chanelshastaB04.html](http://www.kryon.com/k_chanelshastaB04.html)

June 20, 2004

Again, we wish to advise you: Do not go back in your time frame, in your anthropology, in your sociology, any further than 100,000 years, because you won't find anyone like you. Sometimes this statement has been misunderstood or even misinterpreted to say that *Kryon said that there were no Humans before 100,000 years ago*. That is ridiculous. What we're saying is that the Earth that was created for your Human test went through many stages, all needed and necessary. Your spiritual and conscious development didn't happen all at once. Indeed, **hundreds of thousands of years were part of the Lemurian past. They're the core race of the planet.** They're older than the Sumerians, and also those from the Indus Valley. They were here long enough for their language to evolve and change grandly and greatly and provide the seeds of some of the most profound languages that you know today... of the Egyptians, the Israelis, the and the Polynesians... all derivatives of what we'll call the original language of Solara Maru. In these languages were contained basic truths that even today you grapple with, and it's due to something that the Lemurians had, but that you don't. Let me talk about the Lemurian, the physical ones on Earth long ago. They were the core race, but they're not like you are today.

### **The Seed Biology**

The first is their grandness. **This was the race that received the seed biology from the stars.** What you call your *beginning humanity* was provided through the Lemurians **by the Pleiadians**. The energy from the *Seven Sisters* came and visited physically, and this off-world energy contributed to the Lemurian experience, even to the culture, to their race, and the way they looked. I'm going to give you something; I'm going to throw you a challenge: I want you to see something that wasn't realized before.

Many times we've called you *Lemurian* because so many of you are old souls, older than recorded history. And you were indeed part of an experience that you can't remember, but which surges through your DNA. You see, the Lemurians weren't like you, and this is going to sound odd... but they had an added dimension of normal perception. You can call the added perception *Number 5* if you wish, but in interdimensional talk that really isn't accurate.

The Lemurians walked upon this Earth with a dimensional quality that had attributes beyond yours. The Lemurians understood interdimensionality long before Telos. They were also aware, over time, that there was a *devolution* going on (an expression that we will use as the opposite of evolution), and that they were losing certain abilities. In addition, they were also aware that their time was limited at a certain point on the planet as they realized the inevitable water was coming. This devolution was due simply to the fact that some of what they were given by the Pleiadians did not survive over time within the energy of planet Earth.

There have been those who have asked how physical beings like Humans, back then, could suddenly decide to become interdimensional and enter a mountain and stay there with the attributes of a time capsule [the Lemurian story of Telos and Shasta]. That is too unbelievable! It's not something that you can conceive, and it becomes eye-rolling information to those who hear it. Truly, it's because the Lemurians had a perception, given to them by the Pleiadians, that was equivalent to *one more dimension* than you have.

Let's back up for a moment and do some disclosure. We know that talking about a race of beginning **Humans who had extra-dimensional perception** is a wild idea. But there's some evidence, and I will now give you something to think about: The closest ancient race that you have artifacts for are the *Sumerians*. Now, the Sumerians were far removed from the Lemurians in time, but they still possessed a bit of the awareness that the Lemurians provided in their culture. All these things happened over thousands of years. The challenge: Go take a look at the Sumerian artifacts. First of all, you'll see that their computations were all base-6 (a derivative of base-12 math, and a staple of nature and real physics). Next, the artifact known as *The Berlin Seal* clearly shows that they knew all about your solar system! They knew of the motion of your planets, and even that some had rings... all without any evidence of this culture having telescopes.

Your science would laugh at this and completely dismiss the idea that they could know any of these things. They'll tell you that this society must have featured *lucky guesses*. But the odds of a lucky guess that would depict an accurate solar system, even showing the rings of Saturn, would be farfetched indeed. Let me remind you that your own science has postulated that atomic structure is all interdimensional, and that your idea of reality as a Human is less than half of what's actually there. They've also told you that when you start to study the other dimensions, both time and distance are almost completely voided, entangled, and in a quantum state.

Now, I take you back to the **Sumerians**. **They didn't have telescopes, yet they knew all about the cosmos. This is due to the fact that "interdimensional sight" gave them this. It was absolutely intuitive within their perception to "know" what was around them. Neither time nor distance was a factor in "seeing" the solar system.** So what you need 2004 technology for, they did intuitively. The same is true of the Lemurians, only more so. **The Lemurians not only had this ability, but also intuitive knowledge of the interdimensional DNA.** This was what led them to easily build the **Temple of Rejuvenation**, and allow them to **use magnetics to alter their body clocks**.

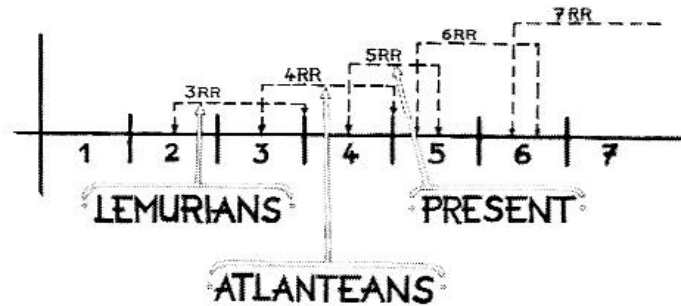
So, understand that none of these Sumerian revelations needed high science, as you might say they would, but rather only a simple perception that they had, but you do not. It would be like a sightless society stumbling upon one that could see. If the culture had been blind for centuries, it would seem to them amazing to find an ancient one that had sight. In the sightless reality, they had to go and discover what a mountain far away was like, but you could "see" it from a distance! This is a very similar situation: one perception versus another.





**GLOBAL EMERGENCE of the TREE of LIFE:**

**SUB-ROUNDS  
ROOT-RACES OF IV ROUND**



**P.181 Initiation Human and Solar**

Individualisation took place during the Lemurian time, the third root race, the human family in this cycle definitely came into manifestation, that is, physical form.

The separation of the sexes also occurred in the Lemurian days, that is, we were original androgenous – of both sexes.

Col James Churchwards research of the sacred tables describe the creation of man in the land of Mu, the mother country of humanity. Lemuria measured over 5,000 miles from east to west, and over 3,000 miles from north to south. The continent consisted of three areas of land, separated from each other by narrow seas or channels, and on it dwelt 64,000,000 people divided into “ten tribes” or “peoples”. It was called the “Empire of the Sun”, and it was the centre of the whole Earth’s civilisation, of its learning, its art, and its commerce. Its great cities were seven, and its people, being skilled navigators, had sent out colonists to all parts of the Earth.

P.81 The Book of Earths by Edna Kenton

Our original race was Polynesian in appearance, with the seeding by visitors, our different race attributes have emerged.

Like the story of ‘Noah’s Ark’ appearing within every culture through the world, the ‘Tree of Life’ also appears throughout the world’s cultures. Both having originated within Lemuria, which was the ‘Garden of Eden’. The submersion of Lemuria occurred after the great flood but before the submersion of Atlantis. The great flood was a result of the Earth re-adjusting the tilt of its axis. Atlantis submerged around 10,000 BC. The sinking of Atlantis completed in 9,564 BC (p.138 Secrets of the Hidden Realms by Almine).

Thus consider:

17,000 BC  
15,000 BC – 11,000 BC  
10,540 BC  
10,000 BC – 9,564 BC  
11,000 BC – 9,000 BC

Note: Noah was a wine merchant and there was no ark.  
Great flood and the many Arks of Noah.  
Submersion process of Lemuria (Mu).  
Laying out of the Great Pyramids of Egypt.  
Submersion process of Atlantis.  
Process of the raising of the mountains.

**TREE of LIFE:**

[http://en.wikipedia.org/wiki/Tree\\_of\\_life](http://en.wikipedia.org/wiki/Tree_of_life)

The concept of a many-branched tree illustrating the idea that all life on Earth is related has been used in [science](#), [religion](#), [philosophy](#), [mythology](#) and other areas. A **tree of life** is variously, a) a mystical concept alluding to the interconnectedness of all life on our planet, b) a [metaphor](#) for common descent in the evolutionary sense, and c) a [motif](#) in various world [theologies](#), [mythologies](#) and [philosophies](#).

***Conceptual and mythological "trees of life"***

Various **trees of life** are recounted in [folklore](#), [culture](#) and [fiction](#), often relating to [immortality](#) or [fertility](#). They had their origin in religious symbolism.

**Ancient Egypt**

- In [Egyptian mythology](#), in the [Ennead](#) system of [Heliopolis](#), the first couple, apart from [Shu](#) & [Tefnut](#) (moisture & dryness) and [Geb](#) & [Nuit](#) (earth & sky), are [Isis](#) & [Osiris](#). They were said to have emerged from the [acacia](#) tree of [Saosis](#), which the Egyptians considered the *tree of life*, referring to it as the "tree in which life and death are enclosed". A much later myth relates how [Set](#) killed [Osiris](#), putting him in a coffin, and throwing it into the [Nile](#), the coffin becoming embedded in the base of a [tamarisk tree](#).
- The Egyptians' Holy [Sycamore](#) also stood on the threshold of life and death, connecting the two worlds.

**Assyria**

- What is known as the [Assyrian](#) Tree of Life was represented by a series of [nodes](#) and criss-crossing lines. It was apparently an important religious symbol, often attended to by Eagle-Headed Gods and Priests, or the King himself. There is no consensus among Assyriologists as to the meaning of this symbol. The name "Tree of Life" has been attributed to it by modern scholarship, it is not used in the assyrian sources. In fact, no textual evidence pertaining to the symbol exists.

Fragment of a bronze helmet from Urartu, with the "Tree of Life" depicted.

**Baha'i Faith**

In the Baha'i Sacred Writings, the Tree of Life refers to the reality of the [Manifestation of God](#) in whatever age he appears. Hence, today, the Tree of Life is [Bahá'u'lláh](#). But, as the Baha'i Faith teaches the essential unity of the Manifestations of God in the divine realm, the Tree of Life also refers generally to all the Manifestations of God. Elsewhere, the Tree of Life is identified with the Book of the Covenant (the charter of the [Covenant of Baha'u'llah](#)).

## China

- In [Chinese mythology](#) a carving of a Tree of Life depicts a [phoenix](#) and a [dragon](#) – in Chinese mythology the dragon often represents immortality. There is also the [Taoist](#) story of a tree that produces a [peach](#) every three thousand years. The one who eats the fruit receives immortality.
- An archaeological discovery in the 1990s was of a sacrificial pit at [Sanxingdui](#) in [Sichuan, China](#). Dating from about 1200 [BCE](#), it contained 3 [bronze](#) trees, one of them 4 [meters](#) high. At the base was a dragon, and fruit hanging from the lower branches. At the top is a strange bird-like (phoenix) creature with claws. Also from Sichuan, from the late [Han dynasty](#) (c 25 – 220 [CE](#)) is another tree of life. The [ceramic](#) base is guarded by a horned beast with wings. The leaves of the tree are coins and people. At the apex is a bird with coins and the [Sun](#).

## Germanic paganism

- In [Germanic paganism](#), trees played (and, in the form of reconstructive [Heathenry](#) and [Germanic Neopaganism](#), continue to play) a prominent role, appearing in various aspects of surviving texts and possibly in the name of gods.
- The tree of life appears in [Norse religion](#) as [Yggdrasil](#), the world tree, a massive tree (sometimes considered a [yew](#) or [ash tree](#)) with extensive lore surrounding it. Perhaps related to Yggdrasil, accounts have survived of [Germanic Tribes](#) honouring sacred trees within their societies. Examples include [Thor's Oak](#), [sacred groves](#), the [Sacred tree at Uppsala](#), and the wooden [Irminsul](#) pillar.
- In [Norse Mythology](#) it is the apples from [Iðunn's](#) ash box that provides immortality for the gods.

## Hebrew Bible/Christianity

- The [Tree of Knowledge of Good and Evil](#) (Judeo-Christian) is mentioned in the Book of [Genesis](#) (for example [Genesis 3:22](#)), \* A [Tree of Life](#), in the form of ten interconnected nodes, is an important part of the [Kabbalah](#). As such, it resembles the ten [Sefirot](#).
- [Etz Chaim](#), Hebrew for "Tree of Life", is a common term used in Judaism. The expression, found in the Book of Proverbs, is figuratively applied to the Torah itself. Etz Chaim is also a common name for [yeshivas](#) and [synagogues](#) as well as for works of [Rabbinic literature](#). Further, it is also used to describe each of the wooden poles to which the parchment of a [Sefer Torah](#) is attached.
- The [Tabernacle](#) and The [Ark of the Covenant](#) were both made of [Acacia](#), or more correctly the [shittah-tree](#). Traditionally the actual [Burning Bush](#) is also Acacia. Though disputed by some writers on [Spiritual use of cannabis](#), many Non-Denominational Christians look at the Acacia as the Tree of Life.

## India

- Flora in general play a central role in the Indian culture, which has largely a vegetarian tradition. The symbolism of the tree is mentioned in the 135th hymn of the 10th book of [Rig-Veda](#), and in the 15th chapter of [Bhagavad-gita](#) (1–4).
- Two varieties of the [fig](#) (called Ashvatta in [Sanskrit](#)), the [banyan](#) tree and the [peepal](#) tree are the most revered in the Indian tradition, and both are considered the trees of life. The banyan symbolizes fertility according to the [Agni Purana](#) and is worshipped by those wanting children. It

is also referred to as the tree of immortality in many [Hindu](#) scriptures. The banyan is believed to have nourished mankind with its 'milk' before the advent of grain and other food.

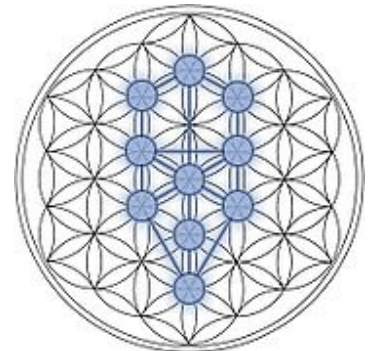
- The fig tree is either a player or an observer in several scriptural incidents of [Hinduism](#). The sages and seers sit under the shade of the fig tree to seek enlightenment, hold discourses and conduct Vedic rituals. The [Bodhi tree](#) under which Gautama [Buddha](#) achieved enlightenment is a peepal tree.
- The fig tree assumes special importance in the Indian tradition owing mainly to its 'two-way growth' (aerial 'roots' growing downwards).

## The Book of Mormon

- The Tree of Life is shown to Lehi and then also to his son Nephi in a dream or vision, between 600 and 592 B.C. according to the [Book of Mormon](#). Lehi recounted the tree as "a tree, whose fruit was desirable to make one happy." (1 Nephi 8:10)
- Nephi's vision is found in [1 Nephi 11:8](#) "And it came to pass that the Spirit said unto me: Look! And I looked and beheld a tree; and it was like unto the tree which my father had seen; and the beauty thereof was far beyond, yea, exceeding of all beauty; and the whiteness thereof did exceed the whiteness of the driven snow."
- Nephi seeks to learn from the Spirit what the tree represents: "10 And he said unto me: What desirest thou? 11 And I said unto him: To know the interpretation thereof."
- Nephi is then shown in vision Mary with the baby Jesus in her arms, after which the Spirit says "21 Behold the Lamb of God, yea, even the Son of the Eternal Father! Knowest thou the meaning of the tree which thy father saw? 22 And I answered him, saying: Yea, it is the love of God, which sheddeth itself abroad in the hearts of the children of men; wherefore, it is the most desirable above all things. 23 And he spake unto me, saying: Yea, and the most joyous to the soul."
- These visions were experienced by Nephi and Lehi before they departed the Bible lands and travelled by boat to the Americas.

## [Urartu](#)

- In Urartu around 13th to 6th century [BC](#), the Tree of Life was a religious symbol, drawn onto the exterior walls of fortresses and carved on the [armour](#) of warriors. The branches of the tree were equally divided on the right and left sides of the stem, with each branch having one leaf, and one leaf on the apex of the tree. Servants (some winged) stood on each side of the tree with one of their hands up as if they are taking care of it. This tree can be found on numerous [Urartu](#) artifacts, such as paintings on the walls of the [Erebuni Fortress](#) in [Yerevan, Armenia](#).



The Kabbalah Tree of Life derived from the [Flower of Life](#).

## Mesoamerica

Main article: [Mesoamerican world tree](#)

- Among [pre-Columbian Mesoamerican](#) cultures, the concept of "world trees" is a prevalent motif in Mesoamerican mythical cosmologies and iconography. World

trees embodied the four cardinal directions, which represented also the fourfold nature of a central world tree, a symbolic [axis mundi](#) connecting the planes of the Underworld and the sky with that of the terrestrial world.

- Depictions of world trees, both in their directional and central aspects, are found in the art and mythological traditions of cultures such as the [Maya](#), [Aztec](#), [Izapan](#), [Mixtec](#), [Olmec](#), and others, dating to at least the Mid/Late Formative periods of [Mesoamerican chronology](#). Among the Maya, the central world tree was conceived as or represented by a [ceiba](#) tree, and is known variously as a *wacah chan* or *yax imix che*, depending on the [Mayan language](#). The trunk of the tree could also be represented by an upright [caiman](#), whose skin evokes the tree's spiny trunk.
- Directional world trees are also associated with the four Yearbearers in [Mesoamerican calendars](#), and the directional colors and deities. [Mesoamerican codices](#) which have this association outlined include the [Dresden](#), [Borgia](#) and [Fejérváry-Mayer codices](#). It is supposed that Mesoamerican sites and ceremonial centers frequently had actual trees planted at each of the four cardinal directions, representing the quadripartite concept.
- World trees are frequently depicted with birds in their branches, and their roots extending into earth or water (sometimes atop a "water-monster", symbolic of the underworld).
- The central world tree has also been interpreted as a representation of the band of the [Milky Way](#).

## Other cultures

- In the [Japanese](#) religion of [Shinto](#), trees were marked with sacred paper symbolizing [lightning](#) bolts, as trees were thought to be sacred. This was propagated by the fact that after they passed, ancestors and animals were often portrayed as branches on the tree.
- [The Book of One Thousand and One Nights](#) has a story, 'The Tale of Buluqiya', in which the hero searches for immortality and finds a paradise with jewel-encrusted trees. Nearby is a [Fountain of Youth](#) guarded by [Al-Khidr](#). Unable to defeat the guard, Buluqiya has to return empty-handed.
- The [Epic of Gilgamesh](#) is a similar quest for immortality. In [Mesopotamian mythology](#), Etana searches for a 'plant of birth' to provide him with a son. This has a solid provenance of antiquity, being found in [cylinder seals](#) from [Akkad](#) (2390 – 2249 [BCE](#)).
- One of the earliest forms of [ancient Greek religion](#) has its origins associated with tree cults.
- In a myth passed down among the [Iroquois](#), [The World on the Turtle's Back](#), explains the origin of the land in which a *tree of life* is described. According to the myth it is found in the heavens, where the first humans lived, until a pregnant woman fell and landed in an endless sea. Saved by a giant turtle from drowning, she formed the world on it's back by planting bark taken from the tree.

## Modern interpretations

- In *Dictionnaire Mytho-Hermetique* (Paris, 1737), [Antoine-Joseph Pernety](#), a famous alchemist, identified the Tree of Life with the [Elixir of Life](#) and the [Philosopher's Stone](#).
- In [Eden in the East](#) (1998), [Stephen Oppenheimer](#) suggests that a tree-worshipping culture arose in [Indonesia](#) and was diffused by the so-called "Younger Dryas" event of c8000 BCE, when the sea-level rose. This culture reached China (Szechuan), then [India](#) and the [Middle East](#). Finally the Finno-Ugaritic strand of this diffusion spread through [Russia](#) to [Finland](#) where the Norse myth of [Yggdrasil](#) took root.
- [Rastafari\[1\]](#) and some [Coptic Christians\[2\]](#) consider [cannabis](#) to be the Tree of Life.

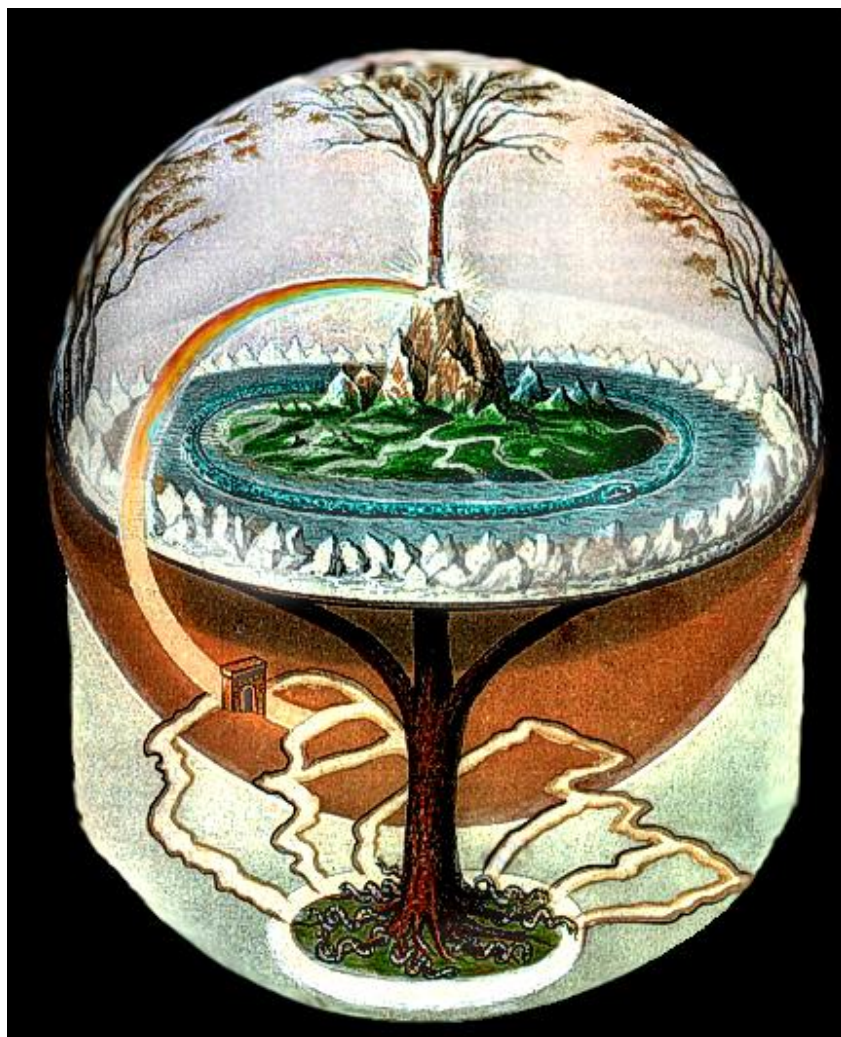
**YDRRYKSIL – COSMIC TREE of LIFE:**<http://www.oneism.org/>

The most imposing historical account of The Tree of Life can be found in Norse Mythology. The age-old Ydrryksil of Norway with its spectacular imagery, although simplified and romanticized, depicts what closely resembles the biosphere.

It has an **underworld**; there is what is referred to as The Cosmic Tree of Life at the top of a mountain, emanating from the Tree of Life are more branches perhaps resembling the rap-around a plasma ribbon effect down the inside of the biosphere.

Emerging from the great door is the glowing rainbow path leading around the beautiful garden replete with rivers and waterfalls. There is the serpent-like ring around the tree, although mysteriously 'swimming' in the water. The Eden 'island' is surrounded by water.

A Tree of Life is very clear, spreading its roots out to many paths of entry for souls from everywhere in the universe. Last but not least, serpent-like streamers also at the roots of the trees, meeting the paths of souls returning 'home'.



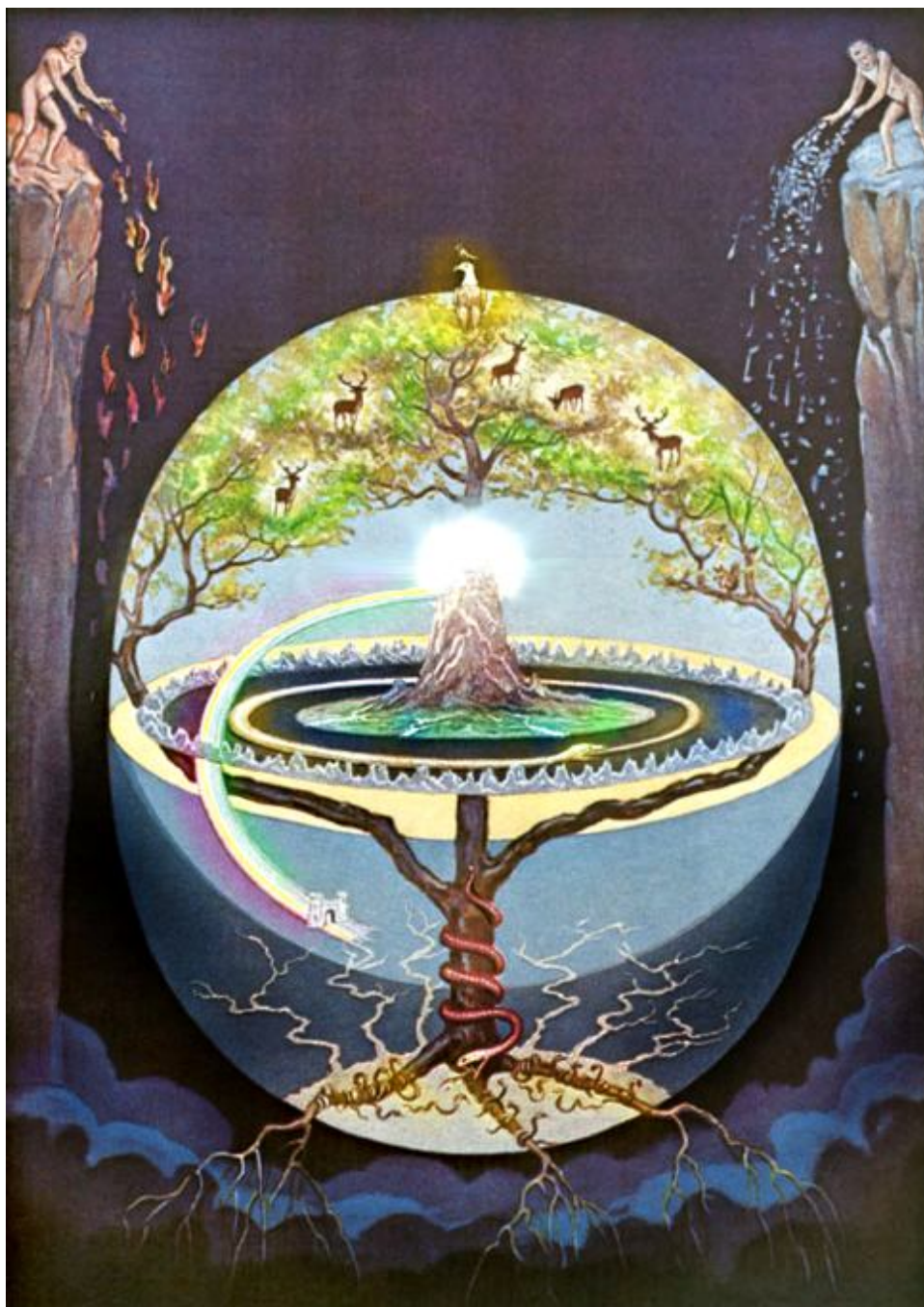
### ASGARD – COSMIC TREE of LIFE:

<http://www.oneism.org/>

Because of their close proximity to Norway, the Asgard people of ancient Iceland in all likelihood had similar beginnings to the Nordic people and perhaps sourced their history from the same ancient records of The Tree of Life. However, the Icelandic Tree of Life has more information to offer.

A phoenix is seen perched on top of the tree. Animals are interspersed among its leaves, and most importantly a serpent is coiled around its trunk. Animals have souls too, albeit it at a lower level of consciousness and not as advanced. Compared to the Nordic rendition, the latter offers a far more accurate interpretation by acknowledging the many rings around the Cosmic Tree that bind it to The Creation.

The two people on 'land' either side, by virtue of the imagery, seem to represent good and evil. One wanting to burn or destroy the Cosmic Tree perhaps in blame for being judged as not worthy of paradise, the other wishing to nurture it in honour of life. One could even say that they could be indicative of the two different worlds they belong to standing on this land. One world on the right representing a world that is constructive, the other representing a world that is destructive.



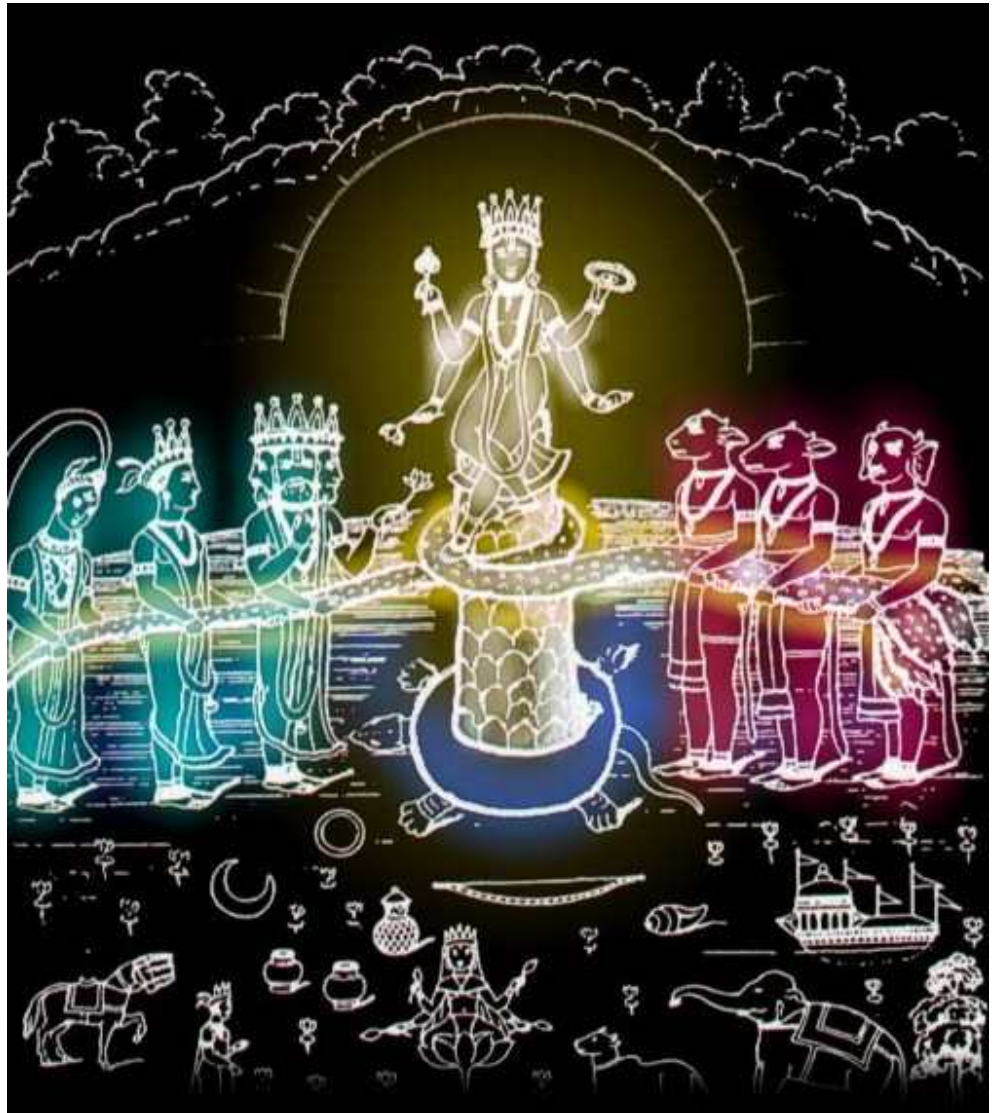
**SHIVA – COSMIC TREE of LIFE:**

<http://www.oneism.org/>

Many accounts in Eastern religion show multi-armed deities perched on top of a pillar. Shiva is the prime example and is considered the supreme God in 'Shaiva' Hinduism. This ultimate deity no doubt fits the status as the one who created all things. Without intending to cause discomfort to those of the Hindu faith, could it be that this multi-armed being on top of a pillar with a serpent around it, is but another interpretation of The Tree of life?

In the image below, the theme is very similar to that found in the ancient Egyptian murals that follow. In Egyptian history the 'pillar of light' is also interpreted with the human form. In the Eastern image below good on the left is struggling against evil on the right as if portraying an ongoing universal truth: The struggle of good against evil, and more specifically here at the place of The Creation, as if trying to get access to The Tree of Life, or trying to manipulate the creation of the universe itself.

The destructive entities would have felt great anger when the time came for the 'good deities' to build the biosphere for The Creation that would keep them out. The angered ones, by virtue of their knowledge that they too carry a piece of The Creation as their consciousness, would have resented this exclusion. Is it possible that this anger has brought about entities that will try to get their revenge on the universe?





**The MAYA COSMIC TREE of LIFE:**

<http://www.oneism.org/>

The ancient Maya civilisation of North America has its own evidence of The Cosmic Tree of Life.

There is no known connection of the earliest Maya with Iceland or Norway especially due to the great distance across the ocean between them. Yet they both had similar knowledge of the place of The Creation in their earliest records. Is this not evidence of celestial beings visiting all civilisations with the purpose of teaching us and guiding us?

Before the Maya became a sadistic murdering civilisation offering human beings in sacrifice, their beginnings may have been far more peaceful: An organised and successful society that thrived on building pyramids.



### MAYAN VASE COSMIC TREE of LIFE:

<http://www.oneism.org/>

Invaluable knowledge is contained on this ancient artefact that now forms part of a private collection, the owner of which is trying to be located. The vase has only been discussed by scholars to the extent of its value as a representation of the sacred 'World' Tree that reaches the heavens... most likely a confused interpretation of a Cosmic Tree.

The Mayan witness to the right appears to be flying, lifted off the ground by the plasma ribbon. He appears to be wearing a body suit, which is not at all historically accurate when it comes to Mayan attire. Either way, the insignia of the Ankh, the Egyptians' symbol for life, does not appear to be a coincidence.

Just like the Egyptians, the Maya believed that there were two parts to the human soul and each had its own glyph, which translates as follows:

'The white flower breath' – Perhaps the body veil, which arrives at birth with the first breath we take, and which departs once again at death.

'The spirit way' – Perhaps the astral body that finds its way in the heavens.

The records of the Maya speak of their pyramids having been built at pre-selected sacred locations where they can re-create the place of The Creation.

They built them above subterranean rivers and held spiritual ceremonies where the initiate would literally go into the **underworld** in trance from a chamber inside the pyramid. In later years, chambers and rough subterranean caves found beneath natural hills would suggest that these were in all likelihood also used for these ceremonies celebrating their ancestors' visit to The Tree of Life. Both mountains and pyramids have the same sacred energy for a greater 'connection' to The Creation.



### AZTEC COSMIC TREE of LIFE:

<http://www.oneism.org/>

The Aztec empire is the last culture that followed after the great Maya in Mexico. It was a culture that sadly in time became more recognised for their barbaric human sacrifices than their great Mayan cultural beginnings. They were the inhabitants of the largest pyramid city of Teotihuacan that was obsessed in the Pleiades stars in the night sky. There is one room that displayed its old ways and sacred knowledge of The Tree of Life with souls travelling through cosmic serpents and the greatness of the sacred bird at the top of it.

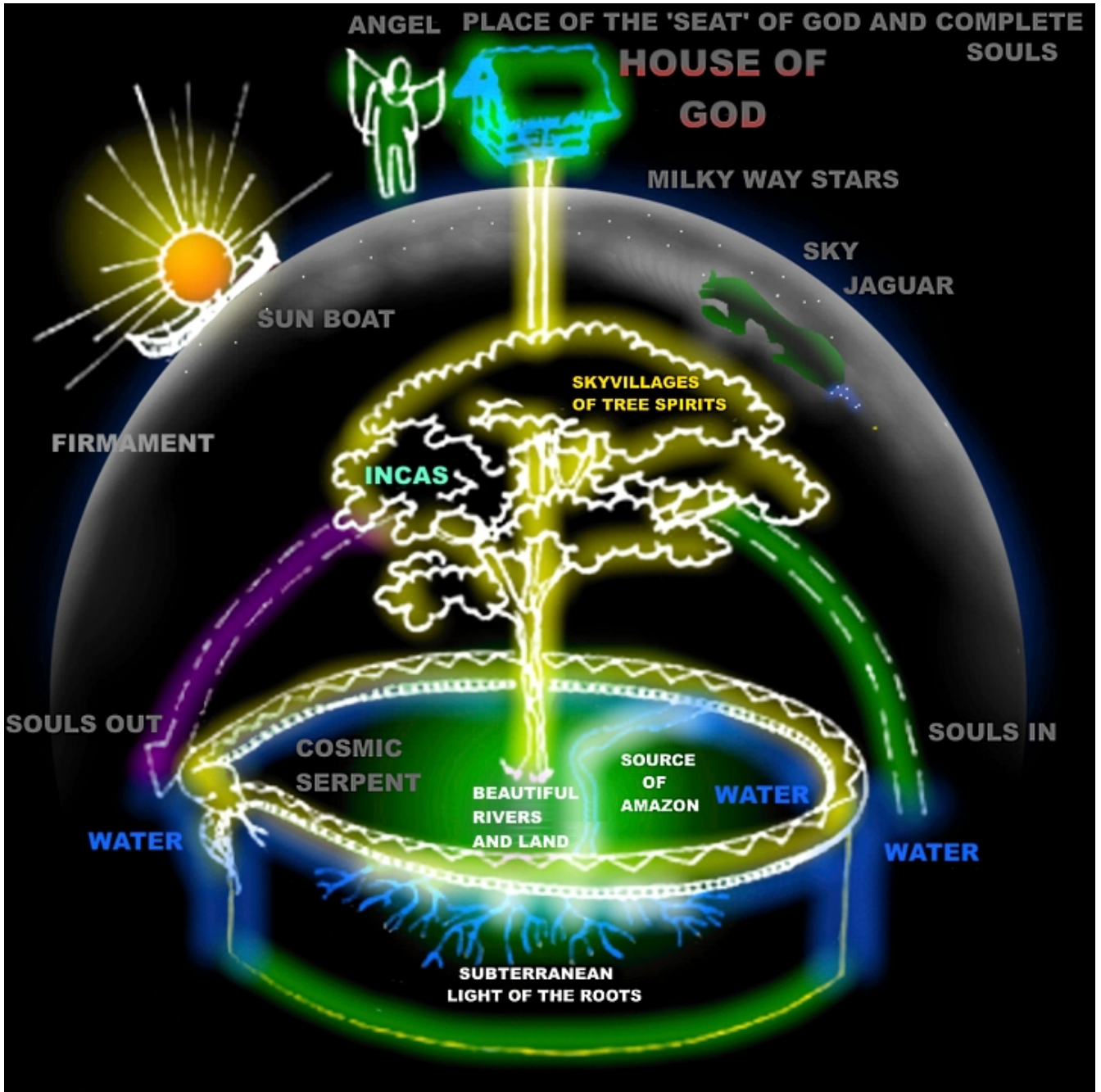


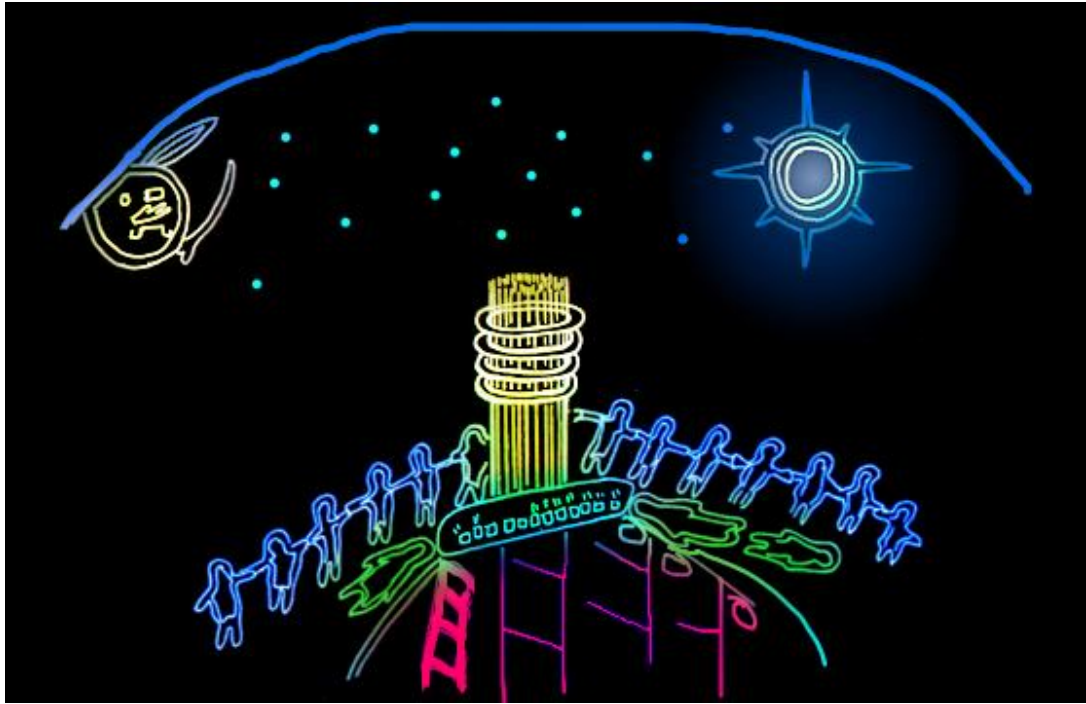
In the image note the enlarged insert (top left) with a soul floating and being connected by ether to the cosmic serpent entwining from star to star in the heavens. The insert enlarged to the right is of one sacred bird and there are many of them at the top of the cosmic Tree. The representation of the Phoenix is quite probable here although it presents more than one sacred bird. All the other birds have serpents in their beaks. It seems possible that these birds are partly representing the same great bird with a serpent in its beak as depicted in their traditional belief of their genesis.

**INCA COSMIC TREE of LIFE:**

<http://www.oneism.org/>

The Inca Empire in Cuzco, Peru, is most likely the place of this ancient civilisation's human beginnings in the continent of South America. It is a different landmass to the Maya which of North America... the Egyptian of Africa and the Norse and European cultures of Europe. What has to be asked is how did all these landmasses so far apart know such unique detail of the Tree of Life? Consider that it was by way of transfer of knowledge and spiritual understandings from the motherland, Lemuria.





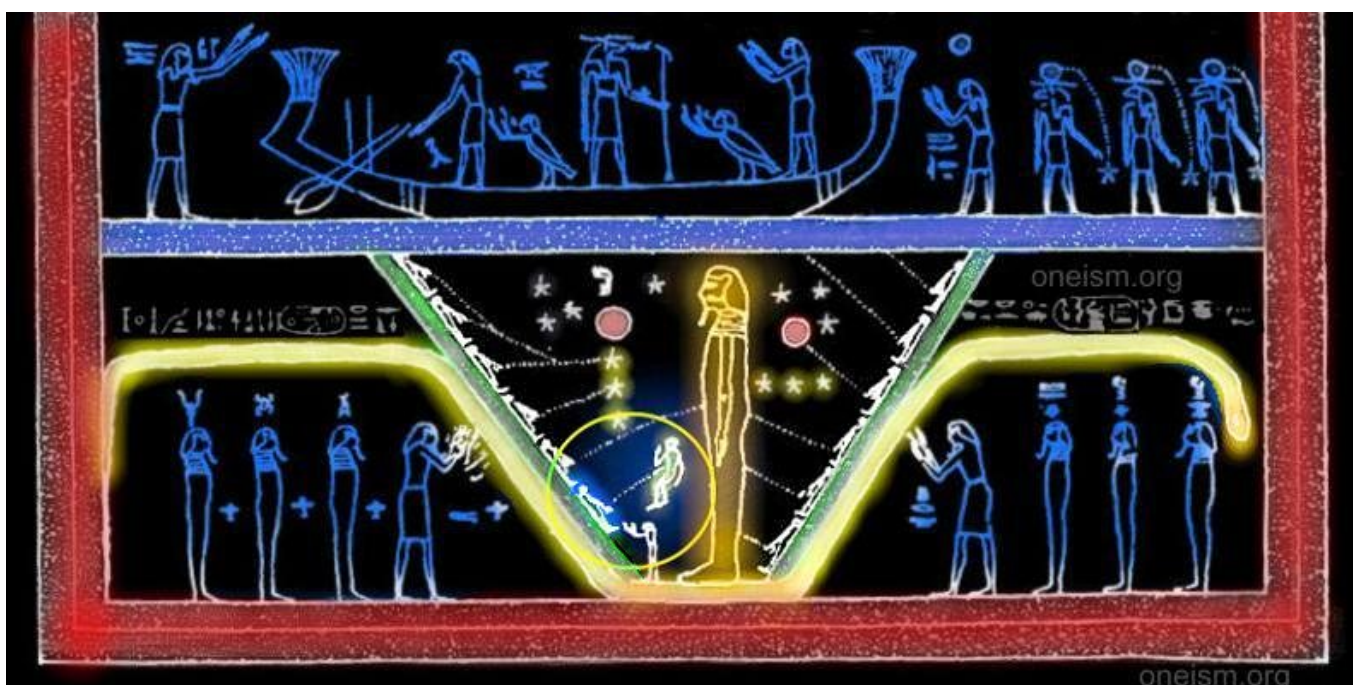
### EGYPT – COSMIC TREE of LIFE:

<http://www.oneism.org/>

The tombs of the pharaohs, especially the one of Ramses IV, hold more records of the place of The Creation, The Tree of Life. Note how The Creation is presented similar to how it is in Hinduism (shaded orange in image below), as human form. The cosmic serpent (plasma ribbon) is also present.

The star secret physical origin of humanity also seems to have been blended into the interpretation. Here it is combined with the soul's secret origin. The three stars in a row show the way to a Sun-like star with another three stars in a triangle associated with it. See lost symbol of the Key of Solomon link at the top of the page.

Ra is the advanced being in the celestial boat in the water (ram head mask shaded blue) around The Creation. Two beings interact on either side of the angled platform with people. Note the detail in the yellow circle.



The yellow circle identifies a soul leaving its body while being connected with a glistening plasma cord.

Above, compare the angled platform (shaded green) with the similar theme coloured panels seen in the author's image (earlier) of the room where the soul merges with The Cosmic Tree.

The detail in the image below is of paramount importance. The Egyptians once again correctly interpret The Creation as conscious life. Their symbolism depicts The Creation as consciously 'human' (the being with tall headdress and yellow glow). They depict The Creation wearing the headdress of Osiris to symbolize that Osiris was also the son of those that came from above (like The Christ) in this epoch and that he was 'one' with the Creation. It seems arms and legs are not visible to emphasise The Creation as a pillar, or something far more important.

The Creation is shown surrounded by serpent coils.

In the image, the Creation is depicted as a pillar of human form bound with serpent coils. The ancient Egyptian 'Book of the Dead' describes the place that Osiris visited as follows:

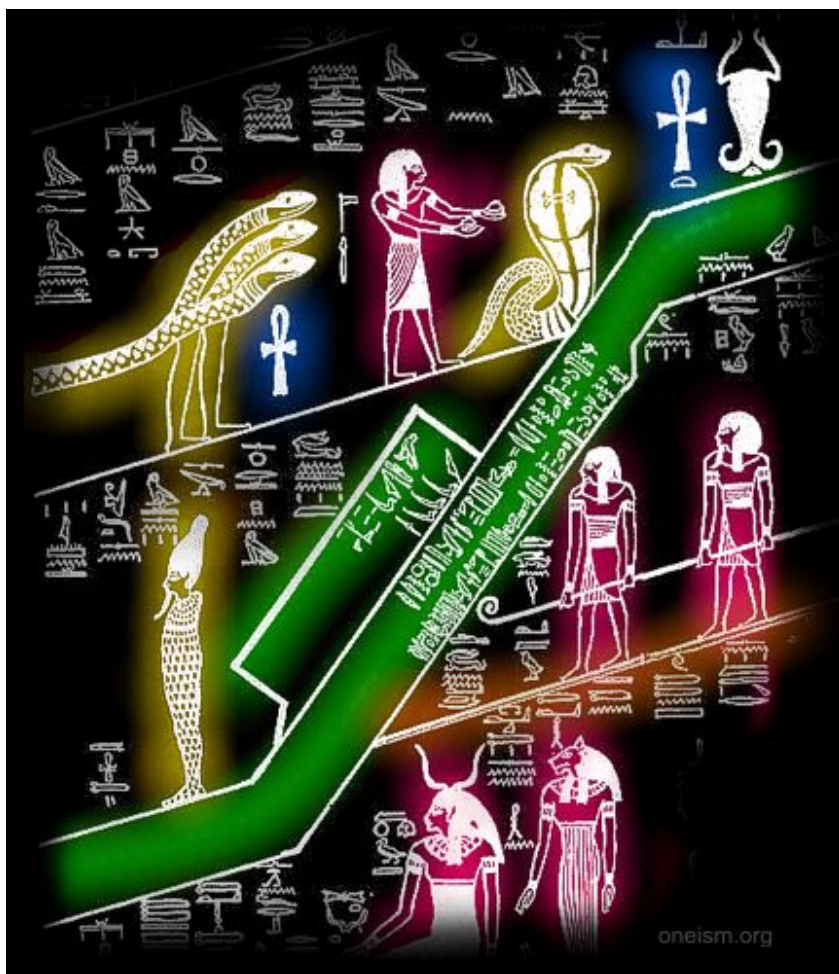
"He is lord of the Amduat, dwelling in a palace whose walls are living cobras."

Note the presence of the Cherubim as the symbol of the Ankh (in blue glow).

The Cosmic Serpent – The soul's means of travel.

The image below from a tomb inscription depicts the beautiful ancient Egyptian knowledge of a soul riding a plasma ribbon, a 'branch' from The Tree of Life of Creation, a Cosmic Serpent. In its journey it passes many stars before it reaches the biosphere of the 'underworld'.

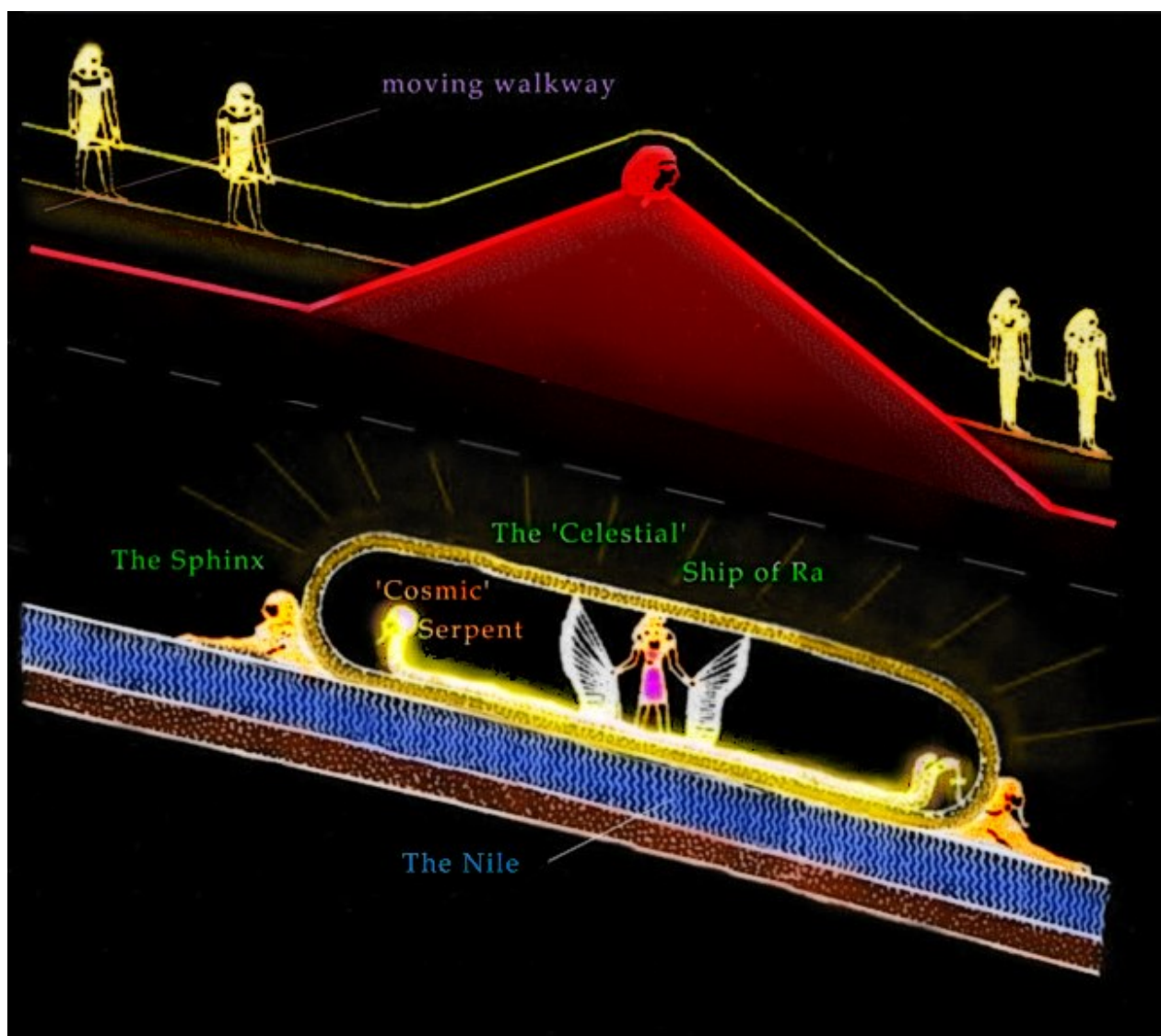
The red orb positioned on top of the star traveller's head as one from a star system, like our Sun, the star of Ra. It is a crown so to speak identifying those who originate from a Sun-like star of our ancestors.



Red pyramid with human head – Celestial ship landing.

In the image below, common to important kings' tombs and referred to as the fifth hour of the Amduat, a pyramid (shaded red) with a head at its apex is shown.

The detail also confirms another recent discovery as to where the celestial ship of the Cherubim deities who were incorrectly worshiped as 'gods' once landed. Ra is seen inside an oval vehicle that traverses space on the back of a cosmic serpent. The celestial disc ship therefore landed on the Sphinx's flat back as shown here! The sequence portrayed here would suggest that this is the place of departure and arrival of the celestial ship. A journey between Earth from the back of the Sphinx, to The place of The Creation.





**SUMERIAN COSMIC TREE of LIFE:**

<http://www.oneism.org/>

The people of ancient Sumer in the Persian Gulf that is now Iraq had their own rendition of the Tree of Life.

Note the beings on each side of the Cosmic Tree of Creation. The two beings on either side bare a strong resemblance to the Egyptian bird headed deities that were explored in the author's book, 'The Hidden Records'. These deities were supposedly advanced beings, wearing helmets resembling a bird's head.

In this image like many others, there is a dual meaning to the bird portrayed at the top of the tree. The winged flying disc imagery with an occupant aboard is along the same style as that of the Egyptians, simply teaching of a disc that flies. Visible inside it is its 'god'-like occupant.

The bird is synonymous with the flying craft of entities incorrectly worshipped as 'gods'. And that this would suggest that the Tree of life is watched over by very advanced deities with the technology of flight. However, since this imagery is placed above the Cosmic Tree, there are hints that it may represent the teaching of the sacred bird, the Phoenix.



Closer inspection also reveals that the cosmic tree has coils binding it together. A special ornamental pillar on its own, adorned with coils, was an important artefact to the Sumerians. In his book, 'The Twelfth Planet', Zecharia Sitchin compares the advanced looking detail of this 'pillar' with an antennae device. On further investigation, Sitchin found evidence of this simple pillar in the form of a statue to be a common feature in the vicinity of most Sumerian dwellings.

### PERSIAN COSMIC TREE of LIFE:

<http://www.oneism.org/>

Staying with Eastern evidence, a medieval Persian painting sourced from the National Library in Paris – Research by Wm. R. Fix of the 'Order of the Seven Spheres' – shows a sacred tree at its centre surrounded by deities.

The theme of a ladder is apparent. According to scholars it represents a ladder leading down to Earthly existence. Notice how similar this is to the Cosmic Tree of Life of the people of Borneo that follows below. Some interpretations of this imagery suggest that what is being portrayed, are seven heavens.

Many ancient Persian scroll seals depict seven orbs in the sky and scholars have commented that they represent the Pleiades (Egyptian museum). Another possibility here is because they are merely the top portions of the spheres showing only the upper half, is it also probable that they are associating the seven stars of the Pleiades with inhabitable worlds there, one in front of the other?

Perhaps they would be arranged in order of greatness and reachable through reincarnation? Each world would be better than the next, attainable only as one proves worthiness during each lifetime.

Any evidence of the history of the Persian Tree of Life is hard to locate. Their tree seems to be linked to two other ancient beliefs. That of Mithras and most likely worship of Taurus (the cosmic bull that the author has identified as being linked to humanity's origins) – and of Zoroastrianism.



**BORNEO – COSMIC TREE of LIFE:**

<http://www.oneism.org/>

Moving even further East, to the Indonesian island of Borneo, there is also support for what appears to be the Cosmic Tree of Life. Evidence of this was found by 'Star Maps' author Wm. R. Fix in the Or-Danom tribe of the Dayak people, in the form of a bamboo decoration.

The Cosmic Tree seems to pass through the centre of what appears to be a dwelling. Also note the ladder, and the people and creatures connected to the branches of the tree.

A cosmic serpent is present at the base of the tree where souls enter for judgement.

There is a Phoenix on top of The Tree of Life, and the 'trunk' has a ring around it just beneath the bird. The souls of many creatures are seen in the tree, as are human souls and highlighted in turquoise are what appear to be the glass panels seen in the author's image. What also appears to be shown are 'soul conduits' for the soul to roll down to merge with The Creation. The 'witnesses' seem to be touching these. The human beings all appear to have their arms outstretched, as if rejoicing or interacting.



**FRANCE – FLEUR DE LIS – COSMIC TREE of LIFE:**<http://www.oneism.org/>

The symbol of the divine light can be traced back to emblems and coats of arms of spiritual importance throughout French history. This divine light was called the Fleur de Lis. It has been interpreted as being a cosmic force field resembling the sacred lotus flower and it may have Egyptian and Hebrew origins. It is synonymous to the force field pattern of a magnetic field.

Compare the flower image and magnetic field pattern with the author's earlier images of the base of The Cosmic Tree from his experience.

A similarity with the Buddhism's sacred lotus can be identified here, where the light at the base of The Tree of life looks like a beautiful coloured lotus flower as it bursts out from the top of the sacred mountain in the Biosphere.

The Fleur de Lis has a central pillar of light bound by two rings.

The simple yet effective motif has resulted in this emblem being emulated in many modern contexts, finding its way into modern fabric design quite prominently.



**The CADUCEUS – COSMIC TREE of LIFE:**

<http://www.oneism.org/>

The Caduceus from Greek Mythology is found in a large cross section of seemingly unrelated ancient civilisations. This is astounding in itself when one considers that critical to the reality of all these civilisations was one unique image... that of the serpent.

The Greeks interpret the caduceus as being the wand of mercury, their mythical god, or messiah of ancient Greece. The Caduceus is probably a title insignia so to speak, showing that this messenger is one speaking of truth from The Creation.

A central axis surrounded by four coils of 'serpents' is connected in some way to a disc with wings. The winged disc is most likely a re-enactment of the flying wheels or celestial discs of the angelic visitors to both ancient Egypt and Sumer. One thing becomes clear, that the 'serpents' coiled around the pillar with four coils are reminiscent of none other than another already familiar piece of Egyptian iconography. The Egyptian Djed column, the artefact for The Tree of Life itself, and as a hieroglyph translated as that which gives life.

No less than six instances of evidence of this precious symbol can be found when delving into the archives of ancient civilisations: In Mesopotamia, five thousand years ago. In Ancient Rome it was used as a symbol of equilibrium. In Ancient Greece as already mentioned. In ancient Egypt this emblem was adapted and was interpreted by the legendary Thoth as representing the powers of the four elements of creation: Earth, fire, wind and water, and the healing powers thereof. In ancient India it is inscribed on gravestones.

In more recent times, the Caduceus emblem has become accepted as the worldwide medical emblem for healing and medicine.



**LAPLAND – COSMIC TREE of LIFE:**

<http://www.oneism.org/>

The Cosmic Tree imagery once again becomes apparent when examining a Lapland shaman's interpretation of the place of the Creator.

A central pillar 'reaches upward towards' a deity, presumably the Creator, holding branch-like items suggestive of The Cosmic Tree imagery (possibly representing the branch effect which is becoming increasingly evident in so many accounts). The 'holiness' is emphasised here where beings that have the greatest haloes are more holy.

The largest halo is that of The Creation like Shiva on top of the pillar itself.

There is one ring around the pillar.

Animal spirits are included here.

There is a ladder analogy again to the Earth.





**VATICAN – TREE of LIFE:**

<http://www.oneism.org/>

Gracing the Vatican Museum floor (see image below) is a finely polished stone representing one very outspoken Pope's coat of arms. He seems to be the only Pope who attached great importance to the Tree of Life, more so than any other Pope before him. The motif on the floor was apparently commissioned by Pope Leo XIII in the late 19th century.

The floor shows some very consistent detail of The Tree of life. There is a celestial orb separated by a band that the author is inclined to interpret as representing its two halves, two halves of the Biosphere.

For Pope Leo XIII the 'Yule' tree at its centre is representative of The Tree of Life. He has recently provided substantiating new evidence of what the beam of light emanating from the Bethlehem star represents. The fir tree was celebrated as the Yule tree by virtue of its shape. Even more intriguing is that the Yule tree and star are convincingly linked to the origins of humanity.



Pope Leo XIII seems to have incorporated the Star of David (six pointed star) just like the Bethlehem star (five pointed star seen with [the Key of Solomon lost symbol](#) parchment) with a beam of light coming down from it. The meaning of the beam of light is solved once comparing The Solomon Key to an Egyptian tomb and tradition of the Yule Tree with its star... all of which date back long before the time of



The Christ. The star secret and Tree of Life secret are deliberately presented together in this mosaic suggesting this particular Pope knew answers to two of the greatest secrets of humanity. It was his way of celebrating that he knew 'who we are and where we come from', both physically and spiritually.

Encrypted in the mosaic is even more sacred knowledge. Two Fleur de Lis are present, suggesting one radiating out from each half of the Biosphere as seen in the author's own image. See the Fleur de Lis that follows as the French reference for the Tree of life.

Also note the birds' wings above the tree. It seems to be a dual representation here of the Angels that came down the beam of light Yule tree, as well as the Phoenix above The Tree of Life.

There are also two undecipherable faces of a child above the bird and a man below the base of the Tree of Life, out of view here but perhaps something to do with Pope Leo XIII himself.

It would have been a very risky and controversial statement at his time, perhaps something along the lines of the controversy of the film 'Zeitgeist'.

To digress a little here, one of the things the 'Zeitgeist' documentary suggests is that Emperor Constantine altered and omitted valuable old texts on Christianity to fit existing Roman and Greek beliefs.

**The SACRED CROSS of the SKY:**

<http://www.oneism.org/>

The Christ often said "Believe in me and you will be saved".

Any person thinking that it means simply believing in 'his name' to be saved is grossly mistaken.

The Christ was a teacher and when a teacher expresses "through me you will be saved" it obviously refers to belief in his teachings and not simply belief in his name.

Around 300 years after the crucifixion of The Christ, Roman Emperor Constantine was the one who introduced Christianity as it stands to this day. Constantine claimed to have had an encounter that would be classed as a paranormal event today. It occurred before an important battle. He was visited by brightly dressed beings that came down from the heavens. The important message to him and his imposing army involved the witnessing of a sacred cross formation seen in the sky. He was told about its significance and that if he celebrated its importance, he would be triumphant. He subsequently decreed that his army's shields be decorated with the cross insignia that is referred to as the Labarum or Chi-Rho.

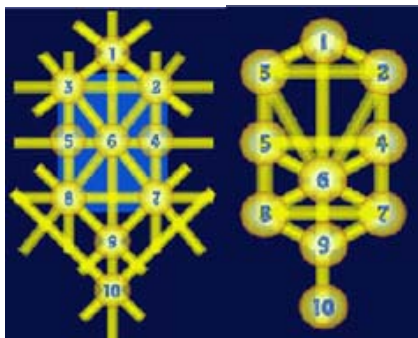
He was triumphant, and on returning to Rome probably realised that the 'message' he received was relevant to something hidden within the 'original' gospels of Christianity. The sacred cross secret must have coincided in some way. Why else would he begin to use this sacred Chi-Rho cross of the sky (seen below) as the title representative of The Christ?

It was also Constantine who would decide that only four out of the entire collection of gospels would be accepted into his version of Christianity. No doubt they were those texts that he believed would be the most palatable to a predominantly Mythras and Zeus worshipping society.

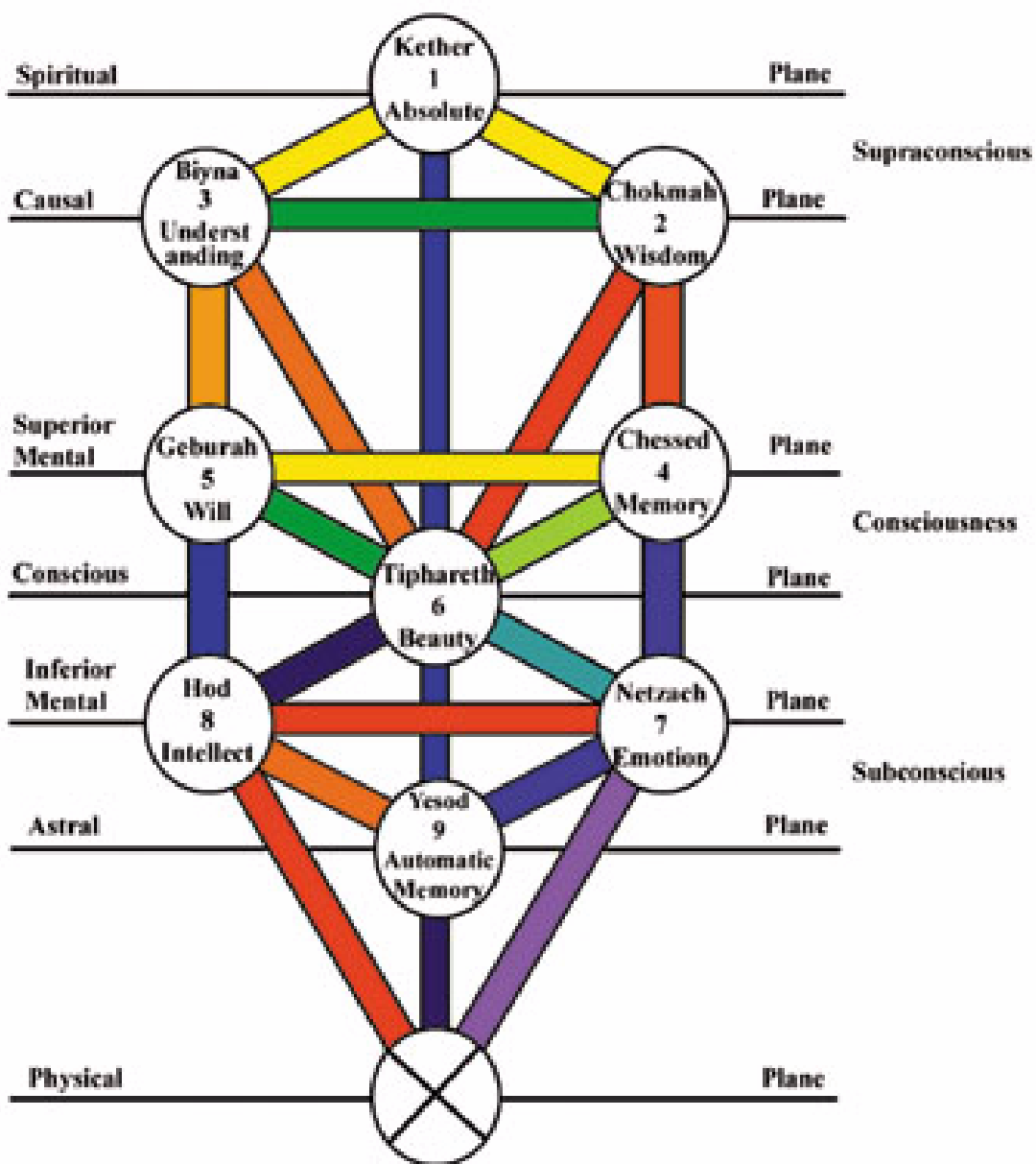
After Constantine had passed, the Roman authorities at the time wanted to keep The Christ's profound teaching of the sacred cross of the heavens to themselves.

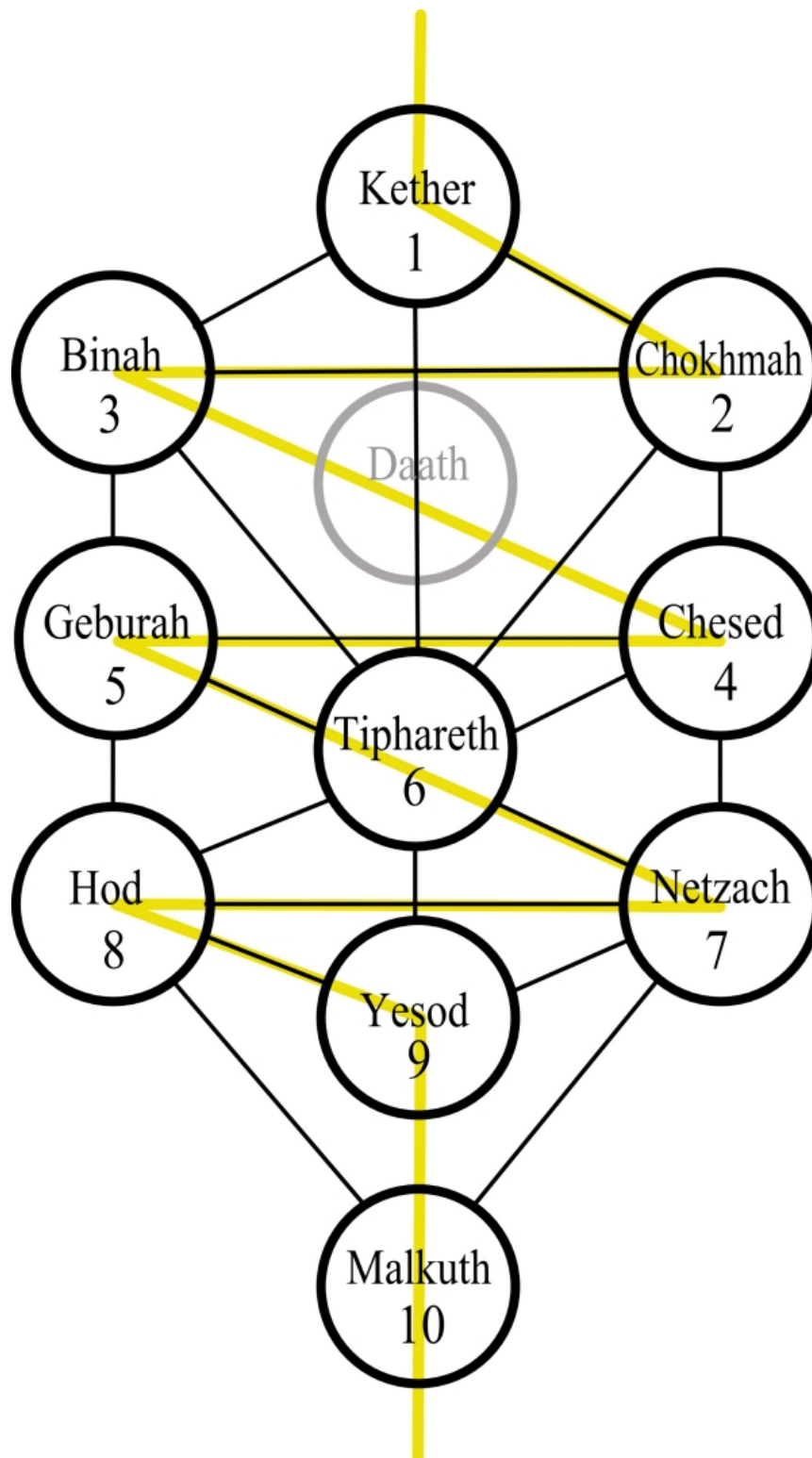


## KABBALAH TREE of LIFE



Traditional spelling	Golden Dawn (Qabalistic) spelling	Meaning	position on body	Astrological correspondence	Magickal image	Jungian and pseudo-Jungian Archetypes (Dion Fortune etc)
Keter	1. Kether	Crown	crown	Prime Mover (God) [later, Neptune]	venerable bearded old man – face seen in profile	Godhead, God, the Self
Hokhmah	2.Chokmah	Wisdom	left side of face	Fixed stars [later, Uranus]	wise old man,	Yang, male polarity animus
Binah	3. Binah	Understanding	right side of face	Saturn	Great Goddess, old hag	Yin, female polarity anima
Daat	Daath	Knowledge	none [later, 3rd eye or throat]	none [later, Pluto]	none	none
Hesed	4. Chesed	Mercy, generosity	Left arm	Jupiter	King seated on a throne	
Gevurah	5. Gevurah	Strength, power	Right arm	Mars	Warrior	
Tifaret	6. Tiphareth	Vision of Higher Self	Heart, breast	Sun	Child, King, Sacrificed God (e.g. Christ)	Ego, self,
Netzah	7. Netzach	Emotions, spontaneity	Loins, left hip, left leg	Venus		anima
Hod	8. Hod	Intellect	Loins, right hip, right legs	Mercury		
Yesod	9. Yesod	Astral plane, the unconscious	Genitals	Moon	Hermophrodite	
Malkut	10. Malkuth	Physical reality (as seen through the imagination)	Feet, anus	Earth	Maiden	



**Kabbalah (Cabala):**[http://www.themystica.com/mystica/articles/k/Tree\\_of\\_Life\\_1.html](http://www.themystica.com/mystica/articles/k/Tree_of_Life_1.html)

The **Tree of Life**, the depiction of the Sephiroth of the Kabbalah, is the primary symbolic pattern of modern Western occultism. It is greatly used even by organizations not of the Kabbalistic traditions

Each of the ten emanations within the Sephiroth is called a [Sephirah](#), and together they form what is called the Tree of Life. This Tree is the central image of Kabbalistic meditation; for again, each Sephiroth describes a certain aspect of God, and taken together as the Sephiroth they form the sacred name of God. The Tree also describes the path by which the divine spirit descended into the material world, and the path by which humankind must take to ascend to God.

### **Kabbalah and Its History**

The Kabbalah, [Hebrew](#) for "that which is received" or "oral tradition," is the Latin transliteration of the Hebrew QBLH, "tradition," which means the message or lore was for centuries taught and passed on by mouth. This will be evident in the narration of its history.

However, in order to avoid confusion and show the current importance of the Kabbalah one must look at its different spellings: Kabbalah, Cabala, and Qabalah. Some scholars and writers have made a distinction between the terms. Generally Kabbalah, or Kabala, signifies the original, or pertaining to, Hebrew version; Cabala signifies the [Christian](#) version; and Qabalah is used for the [Hermetic](#) version. Such signification has been ignored by many because of the various differences found within. In this article Kabbalah will be used for all.

Although the Kabbalah is founded on the [Torah](#), the Jewish scriptures and other sacred writings, it is no intellectual discipline; and the mystic is not to practice it in solitude, but is to employ it to enlighten humanity. The Kabbalist seeks two things: a union with God while maintaining a social, family, and communal life within the framework of traditional Judaism. Those who have adopted the Kabbalistic teachings have modified these latter aims.

There are various legends concerning the origin of the Kabbalah, most maintain it came from God. Some say God gave it directly to [Adam](#) (Aman), while others claim God taught it to a select angelic group, sort of a theosophical school in Paradise. Afterwards the fallen angels taught it to Adam, the disobedient child on Earth in order to furnish humankind with the means to return to their nobility and felicity. It then passed to Noah, to [Abraham](#) and [Moses](#). Moses included the first four books of the Pentateuch, leaving out Deuteronomy, in the Kabbalah before he initiated seventy Elders into it. The Elders initiated others into it. It is thought that [David](#) and [Solomon](#) were Kabbalistic adapts. Eventually the oral tradition ended and the knowledge was written down.

It might be noted that from Abraham, who immigrated to Egypt and leaked some of the sacred teaching, the Egyptian s learned a portion of the knowledge. It was from Egypt that other Eastern acquired the knowledge and adopted it into their philosophical systems. Surely there is uncertainty of the adequacy of this lore, but it offers a plausible explanation as to the similarity between Eastern beliefs. Moses being privy to all Egyptian wisdom was first initiated into the Kabbalah in the land of his birth and later became more proficient in it during his wondering in the desert wilderness.

As can be seen the Kabbalah is very much akin to [Gnosticism](#). In both, sacred knowledge which God withheld from man was given to him by his adversary; the serpent in the Garden who tempted Eve, and the fallen angels who gave humankind the Kabbalah. In both cases knowledge, gnosis, knowledge of God, is regarded as the most important thing. Not possessing gnosis, not sin, is considered wrong because without such knowledge man cannot know God. Such knowledge is acquired through revelation, not learning. To know God is the purpose of the Kabbalah.

Both Gnosticism and the teachings of the Kabbalah were popular in the countries of the eastern Mediterranean around and after [Christ's](#) time. Those holding to either teaching believed they were the "elect" because they were enlightened by possessing the knowledge of the divine; those possessing such knowledge were transformed-to know God is to be God.

The first Kabbalistic text having a known Author was written near the turn of the thirteenth century in Provence. This was a short treatise on the Safer Exira by Rabbi Isaac ben Abraham the Blind. His father Rabbi Abraham of Posquierre wrote the initial critique of the Maimonides' Codes of Law. Rabbi Isaac became the central figure at the Kabbalistic school in Provence as he was quoted for the next generation.

Sefer Yetzirah (Book of Creation) tells that God created the world by the means of thirty-two secret paths of knowledge which are the ten Sefirah and the twenty-two letters in the Hebrew alphabet. It is believed the ten Sefirah forming the Sephiroth were originally thought as referring to numbers but later representing emanations from which the cosmos was formed. This worldview presented is presently found in the current interpretation of the Kabbalah.

The next step in the Kabbalistic development occurred in northern Spain through Rabbi Moses ben Nachman, known as Nachmanides. His main concern was the confrontation of Christianity, and commented exclusively upon the Pentateuch. Others of this school, Girona, wrote commentaries on both the Biblical and [Talmudic](#) texts thus joining teachings of the Book Bahir and the Provence Kabbalists into cohesion. In these writings, even though the authors knew the Kabbalistic secrets, they presented Talmudic teachings without revealing the Kabbalistic worldview.

In the second half of the thirteenth century the "ecstatic" or "prophetic" Kabbalah appeared which emphasized a visionary and experiential aspect relying on novel approaches to the Hebrew alphabet and numbers as sources of the Divine Truth. These conceptions were mainly those of Rabbi Abraham Abulafia, a lonely mystic wanderer, and represent the mystic tendencies among the Kabbalists instead of theosophical and traditional speculations.

Among his disciples was Rabbi Joseph Gikatilla, who later joined Rabbi Moses de Leon the author of the Zohar. Gikatilla wrote a major presentation of the Kabbalistic worldview, *The Gates of Great Light*, summarizing the Kabbalistic teachings according to the Sephiroth. This about ended the creativity and influence of the medieval Kabbalah before it migrated Italy, Germany, and the east, and became a meaningful, but still esoteric and marginal, component of Jewish religious culture.

An important development in Kabbalah teaching also occurred, in pre-[Laurianic](#) Kabbalah there was thought to be an unbroken connection from *en sof* and the physical universe. However, Lauria conceived *tzimtzum*, that is *en sof* performed contraction in order to make room for Creation. In other words, God or

his "supreme will" contracted his "light" or "thought" in order to make "empty space" in the physical universe for his creation. Light and thought are in parenthesis because they are view as attributes, each by which creation was performed, by different writers. Some hold *tzimtzum* never occurred; it is impossible, but used as a metaphor for human comprehension.

This spreading of the Kabbalah was hastened by the Spanish expulsion of the Jews in 1492. Throughout Europe the Kabbalah was read more publicly. Given much credit for its European influence is Isaac Luria Ashkenzia (1534-1572), called Ari, who as a student of the great Kabbalist Moses Cordovero (1522-1570) conceived bold new terminology and complex symbolism. To this he introduced letter combinations as a medium for meditation and prayer.

From this emerged the Hasidic movement making the Kabbalah accessible to the masses. The Hasidim are the only branch of modern Judaism still maintaining mystical practices. The principle figure of this emergence is Israel ben Eleazar (1698-1760), called Baal Shem Tov "Master of the Holy Name," whose teaching centered on *devekuth*, or cleaving to God, but in a more personal way than before. The Hasidic movement of the late seventeenth and eighteenth centuries stressed a Kabbalistic pantheistic system, a belief that God is in everything, as opposed to pantheism, God is everything. This had good and bad effects. Initially a priest led each unit in the movement, a spiritual one with possibly messianic intentions who became a charismatic preacher, a holy one. He was called a *zaddik*. Most of the founders of Hasidism were in Madrid where such a system functioned well, but when expanding throughout Europe difficulties arose. A major one was the idea that the only processor to a holy one could be a son of a holy one. Eventually this became absurd, realizing there were other righteous or charitable men who could lead besides a son of a *zaddic*, so the term took on new meaning.

### **Composition of the Sephiroth:**

The Sephiroth may be viewed as God reaching out to humankind. Each [Sephirah](#) with the Sephiroth is an emanation of an attribute of God. Many have described the Sephiroth in various ways, two are prominent: the four worlds and the higher man, or [Adam Kadmon](#). With the description of the worlds is the more specific description of the four levels of worlds. Included within this latter description are the highest world which is the world of emanation (*atzilut*), next is the world of Creation (*beniah*), then the world of formation (*yetsod*), and culminating with the world of action (*asiyah*).

It is claimed the Isaiah 43:7 establishes the foundational proof for the existence of the four worlds: "All that is called by My Name, for my Kavod (Glory) I created it, I formed it, yes I made it." The word *asiyah* shares the meanings of "making" and "acting."

The structure of the Sephiroth can be from top, the first Sephirah [Kether](#), to bottom, [Malkuth](#), the last Sephirah or vice versa. The direction in which the structure is viewed tells what action is taking place between God and man. When viewed from top to bottom one sees that God is reaching out or letting himself be known to man. Viewed in reverse order, bottom to top, one sees man's attempted ascension to God. Either way, the purpose is the same, the union of God and man, which is the ultimate purpose of the Kabbalah.

Each Sephirah within the Sephiroth is an emanation of an attribute of God, the manifestation of the divine attribute. The first or top Sephirah is [Kether](#). Kether is called the "crown" or "supreme crown." Kether is



the essence of God. The naming of describing of the essences of each Sephirah, an attribute of God, is just metaphorical since God has no attributes or in the case of Kether, no essence. God is spiritual; he is nothing while being everything. This is why in Kether God is described as *ain*, nothingness, and *en sof*, absolute. God is nothingness but absolute and without end. God is the uncreated entity, nothing exists without him, he is existence itself.

But this nothingness and inclusive existence is not all that compose Kether. Within this nothingness and absolute are every attribute of God that will be manifested in the lower Sephirahs. The non-essence and essence of Kether is Biblically verified: "I AM THAT I AM," a necessary ontological principle (Exodus 3:14); "I am the first and I am the last and beside me there is no God. And who, as I, can proclaim-let him declare it, and set it in order for me...Is there a God beside me? Yea, there is no rock (necessary being beside me)." (Isaiah 44:6-8) "Before me there was no God formed (manifested), neither shall any be after me...I am God." (Ibid. 43:10, 13)

From Kether comes [Chokmah](#), the Second Sephirah. Chokmah signifies divine thought, meditation, and/or art. Like Kether, Chokmah contains contradictions or opposites without any division or friction; since God is *ain*, nothingness, as well as *en sof*, absolute, there in him can be no division, an absolute is an absolute, which is why in [numerology](#) the number one signifies God. So too, in Chokmah, representing, metaphorically divine thought and meditation, there is no difference between God knowing himself and having knowledge of his being, his essence, because God is knowledge, the essence of knowledge. God, the essence of divine knowledge in Kether, is the emanation of divine knowledge in Chokmah without leaving Kether. This seems impossible to human understanding but it must be true; since God is an absolute, an absolute is by nature indivisible, then one part of him cannot be in Chokmah and not in Kether; that divine part or attribute must equally be in both. This statement holds true for every divine attribute and Sephirah; they are God equally and in the same way. Therefore, all divine attributes are equally present in every Sephirah; it is only metaphorically that each Sephirah manifests a different attribute.

Chokmah is chiefly the manifestation of divine thought, contemplation. A better description of divine thought is stating what it is not; it is not a process, in this way it is unlike human thought. Human thought is a process of collecting, sorting, and forming knowledge which usually accepts, rejects, and/or transforms it into new or different knowledge. Divine thought has no process such as is embodied in human thought; no, one might say it is instantaneous. God thought and it was. This is why according to Kabbalistic teaching Creation occurred at once. This is the mystery of Creation; there was nothing, and there was everything. Within this mystery of Creation is the mystery of man; God thought and man was fashioned. Essentially this all is in the mystery of Chokmah: Chokmah is the One; it knows only, or is the thought of, the One and all in the One. For this reason the perfect archetypes of each and everything reside with Chokmah.

The third Sephirah is [Binah](#). Binah is described as the reflection of Chokmah. Metaphorically speaking, Binah may be described as a mirror, which prior to receiving Chokmah's reflection, was empty and dark like a covered mirror; but when receiving Chokmah's reflection it becomes a supreme plane of luminous light, a light issuing from more than luminous darkness of essence. In this brilliance are the intelligence of Kether and the wisdom of Chokmah, both are reflected in Binah. God has entered the void of his boundless receptivity, his face into his supreme mirror of Binah. This is God revealing himself to himself. By receiving this reflection Binah has a feminine nature, the reception of the intelligence of Kether and

the wisdom of Chokmah, and it becomes masculine when passing this knowledge onto the succeeding Sephirah. This statement is true of each Sephirah except for Malkuth; it is feminine when receiving and masculine when passing divine attributes. Since Binah is the first recognized receptive Sephirah she is frequently called the "big mother."

When viewing the Sephiroth as the depiction of human anatomy, the first three Sephirahs, Kether, Chokmah, and Binah, form the head, all concerning knowledge. Kether represents knowledge or knowing, the divine consciousness itself; Chokmah represents that which knows, wisdom, the active or dominant principle of knowledge; and Binah, that which is known, the receptive and reflective aspect of knowledge. This can be simply expressed as the thought, that which thinks, and that which is thought, metaphorically. However, with God there are no three actions; there is one, he produces the thought and knows it simultaneously. Again, divine thinking has no process; it is.

The reflection of Binah now begins the descent, metaphorically speaking, through the succeeding seven Sephirahs. The attributes up to this point are declared to be in what is termed the "great face" of God and inaccessible. Now the attributes enter what is called the "small face" of God and become accessible. The first divine attribute to become accessible is his grace in the Sephirah of [Chesed](#). Grace in Chesed is the first beatitude cosmologically exposed and is sacred happiness given to others according to the need of the other. This means that the Creator God in so far as he realizes, and with boundless kindness, adapts to the limits of every created being, which enables the giving of the form of life to everything that exists, and delivers all things from existential limitations.

There is cooperation between Chesed and [Geburah](#). While Chesed gives life to everything, Geburah the next Sephirah manifesting the strength and rigor of God, gives shape, form, or limitations to everything. God could not give life without limits; such would be injustice because all things would consolidate together; there would be no distinguishing them. In his rigor, not out of anger but in accordance with judgment, God established limits for everything so each received what it is due and requires. Once their limits are fixed by God's rigor all things participate intimately, in their positive reality, in his immanent grace.

It is believe God created the universe to affirm by his grace and rigor all that is in him and deny all that is outside of him. Rigor is first manifested as cosmic darkness, the One (God) without a second; then grace fills all created things and beings with luminous light of divine immanence. Again, divine rigor is not anger but the negation of all that is not God. It is here that evil seems to appear through the appearance in God's contraction ability, to contract to make room for creation. Binah seems to present this evil in its reflection; however, the void created by contraction is of God's making. Therefore, Binah appears to promote good through Chesed and negates evil through Geburah because the end result is totally good.

The next Sephirah [Tiphareth](#) mainly manifests God's beauty. God's beauty is derived from his identity which is embodied in Kether. Within this identity lay all of God's infinite possibilities which are displayed in Tiphareth. This Sephirah above all other is the mediatory one of God's heart and compassion, which embraces and fuses everything which is "above" and "below," "on the right" or "on the left" in the world of emanation. In God's beauty all of his aspects are what they are, identified, in all of their relationships and in all of their reciprocity; each Sephirah opens to its fullness and magnificence, penetrating and being penetrated by other Sephirah.

Tiphareth, the beauty of God, is simply a confined description of the entire Sephiroth. All the divine attributes are presence in their true prospective, their limitations and relationships, to each other forming unlimited expressions of the "small face" while revealing the mysteries and lights of the "great face" enclosed within.

The essential principle of divine beauty, Tiphareth, is the identity of the absolute, *ain*, which excludes all that is not of itself, and the infinite, *en sof*, which includes all that is real. This is the unity of the more than the luminous darkness of non-being with the dazzling plenitude of pure being, the supreme and most mysterious of unities, which is revealed in the saying (Song of Songs 1:5): "I am black, but comely..." This is the essential principle of divine beauty, the expressing of the nature of God and nothing else.

Accompanying the emanation of divine grace is the manifestation of divine victory, which is the masculine, active and positive power of the Creator, manifested in the Sephirah [Netzach](#). Netzach comes forth from Tiphareth as an infinite flow of pure life, composed of life and bliss, with which it fills everything born with the cosmic multiplication of God, the One.

This illusory multiplication, however, does not solitarily occur. This multiplication can only occur in the accompaniment of [Hod](#). Hod takes on a feminine role of receiving the life which Netzach pours forth; as it pours forth the life it clear away the divine to make room for the Creation which Hod receives, the act of divine contraction. Therefore, both Netzach and Hod must simultaneously come forth from Tiphareth. Hod in its feminine role displays the negative power of the Creator in making room for the new Creation, signifying victory.

The Sephirah [Yesod](#), rightly called the "foundation" is the direct result of the actions of Netzach, the expansive pouring forth of life, and Hod, the emptying of the divine to make room for new Creation. Yesod is the unique act, which simultaneously reveals and reintegrates all this is emanated and manifested; thus, it is also called the kol, the "all." Yesod is the final emanation of all the attributes manifested by the succeeding Sephirahs; and it is the coming together of them again. That is why, for example, the perfect archetypes of everything are presence in Yesod just as they are in Chokmah. But, again, it must be emphasized that these emanations and manifestations are illusory because the entire Sephiroth always existed. The terms emanations and manifestations are metaphorically employed to aid human understanding but in reality they never occurred because the Sephiroth was always there.

The [Malkuth](#), the tenth and last Sephirah in God's descent to man, houses the physical manifestations of all proceeding Sephirahs. Malkuth seated at the very bottom of the Middle Pillar receives everything from "above," and is rightly called the "kingdom" of god. From the right side of the Sephiroth it receives the luminous and intelligible emanations, from the left side the dark and unintelligible ones, and from the central pillar of which Kether is the highest situated the super-intelligible attributes. In this sense Malkuth is identical with the Who, God; it possesses intelligible, super-intelligible, and unintelligible divine aspects.

Even though Malkuth possesses these aspects it is still a passive and receptive principle, the final destination for all of the emanations. Malkuth is purely feminine, having no Sephirah unto which to pass her received emanations. She is called the woman, the wife, or the queen of the divine king. In comparison to Binah, the "big mother," Malkuth is called the "little mother." In other words, all of the innumerable possibilities of the One, God, are conferred on Malkuth where they are actualized. They are

actualized through the universal "ether," the quintessence of four subtle or celestial elements and of the four corporeal terrestrial elements; which makes ether the infinite receptivity of the divine intelligence: Binah. In this way, the God "above" reveals himself "below." This is why the lower seven Sephirahs, the "small face" of God are said to reflect in detail the first three Sephirahs, the "greater face" of God.

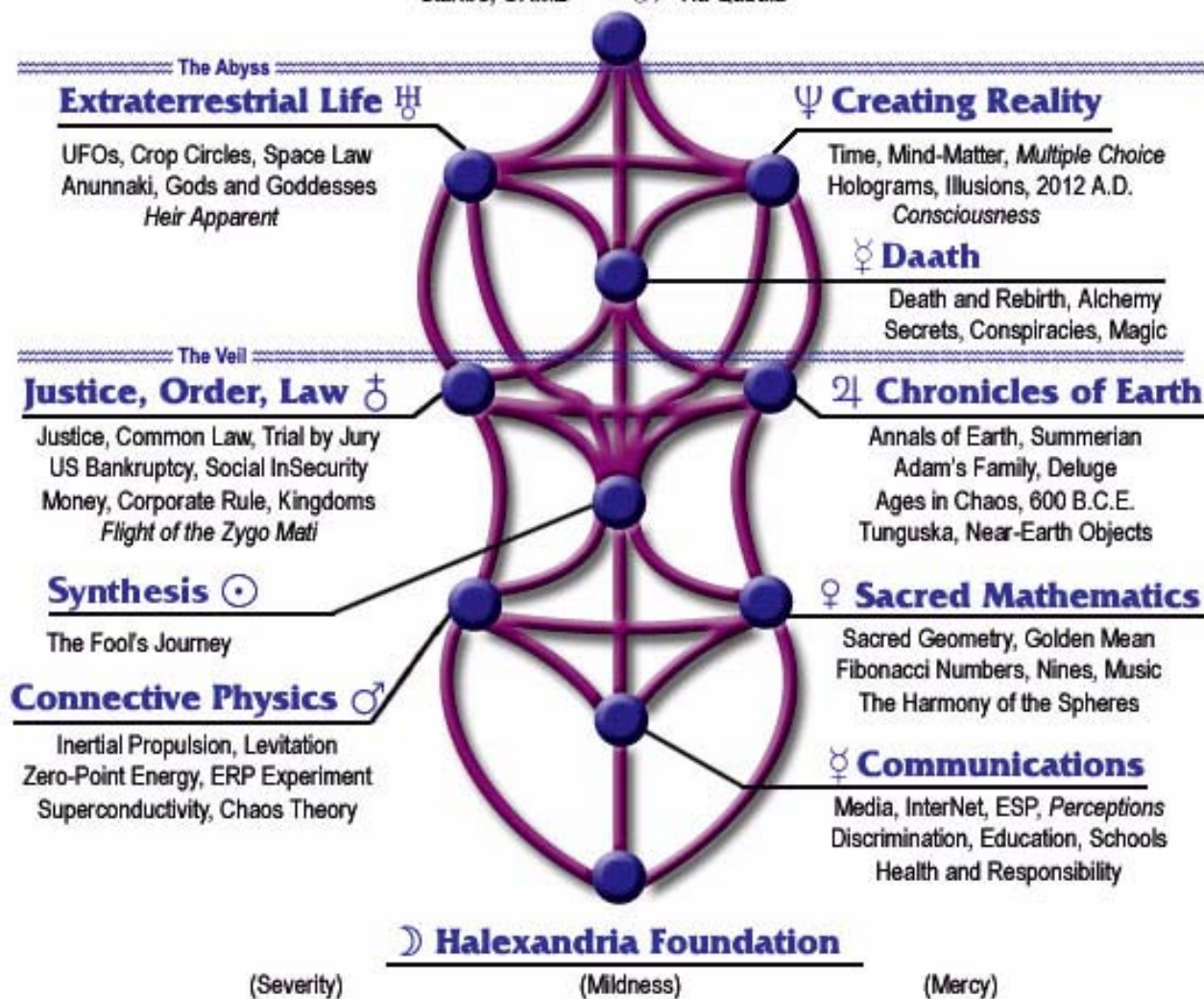
Daath appears within the Sephiroth but it is not a Sephirah or the eleventh Sephirah as it is frequently mistakenly referred to. Daath includes the first conscious knowledge in Kether and when reflected from Binah becomes ontocosmological intelligence. Simply, Daath is divine intelligence that is inaccessible until it is reflected from Binah and spread throughout the entire Sephiroth. This intelligence presents God and his attributes as well as the perfect archetypes of all things. Daath is God's knowledge infusing everything.

Previously mentioned, the Sephiroth is prominently described in two ways, the four Worlds and the higher man. The four worlds have been described. When describing the higher man, the specific focus is on the relationship of the Sephiroth to man. This entails a threefold description; a description of *Adam Kadmon*, also called *Adam Ilaah*, the principle man, who is God in his essence and ontological possibilities; the immanent man, *metraton*, who is God's entire spiritual manifestation; and the earthly, finite, man, *Adam Harishon*, first man, manifested in the forms of spirit, soul and body.

Each Sephirah represents a spiritual and/or physical characteristic of man; Kether, his pure and divine essence or the hidden and super-intelligible brain; Chokmah, his knowledge of God or the right brain; Binah, his ability to discriminate between the real and unreal, the left brain; Chesed, his luminous nature which is always aspiring to the divine, or the right and merciful arm; Geburah, his true judgment of all things, or the left and rigorous arm; Tiphareth, his inner and outer beauty or the heart or trunk symbolizing beautiful and love; Netzach, his spiritual power, or the right thigh or cosmic force; Hod, his natural force, or the left thigh or cosmic negative force; Yesod, his activity, or the generative organ or creative act; and Malkuth, his receptivity, the feet, the female body, or the end-place, substantial recipient of the emanations of the Sephiroth.

# The Tree of Life

*The Golden Tear from the Eye of Horus*  
 Starfire, ORME *W* Ha Qabala



# Kryon DNA Schedule

<http://www.kryon.com/seminar%20images/DNA%20page/DNA.html>



**Kryon**

**Layers**

**Grounding Layers**

1. Biological layer – *The tree of life*
2. Life Lesson layer – *Divine Blueprint*
3. Ascension layer – works with layer 6

**Human Divine Layers**

4. Angelic Name – *Core crystal energy*
5. Angelic Name – *Core crystal energy*
6. Prayer and Communication – *Higher-Self*

**Lemurian Layers**

7. Lemurian layer – *Revealed Divinity* – extra dimensional sense
8. Lemurian layer – *Wisdom & Responsibility* – Master Akashic Record
9. Lemurian layer – *Healing layer* – *The Flame of Expansion* – St. Germain

**God Layers**

10. Divine Source of Existence – *The Call to Divinity* – Recognition of God in you.
11. Wisdom of the Divine Feminine – “Compassion layer”
12. The God Layer – *Almighty God* – The God in you.

**Kryon Seminars**

**The Twelve Layers of DNA:** Kryon outlines the interdimensional 12-layer DNA matrix.

The **first layer of the DNA** is the only layer that science can identify, and have now mapped, and they consider 97% of it is junk, however all 100% of it is active and is interactive with all of the 12 layers all the time. The name of the first layer of DNA is called *Keter Etz Chayim* meaning "The Tree of Life."

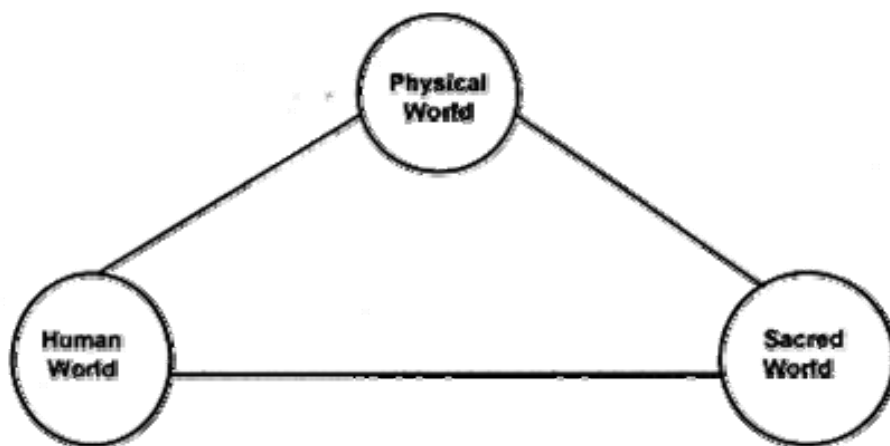
## ABORIGINAL AUSTRALIA ART & CULTURE CENTRE – ALICE SPRINGS

<http://aboriginalart.com.au/culture/dreamtime2.html>

### THE DREAMTIME or DREAMING:

According to Aboriginal belief, all life as it is today – Human, Animal, Bird and Fish is part of one vast unchanging network of relationships which can be traced to the great spirit ancestors of the Dreamtime.

The Dreamtime continues as the "Dreaming" in the spiritual lives of aboriginal people today. The events of the ancient era of creation are enacted in ceremonies and danced in mime form. Song chant incessantly to the accompaniment of the didgeridoo or clap sticks relates the story of events of those early times and brings to the power of the dreaming to bear of life today.



### THE SACRED WORLD

The Dreamtime is the Aboriginal understanding of the world, of its creation, and its great stories. The Dreamtime is the beginning of knowledge, from which came the laws of existence. For survival these laws must be observed.

The Dreaming world was the old time of the Ancestor Beings. They emerged from the earth at the time of the creation. Time began in the world the moment these supernatural beings were "born out of their own Eternity".

The Earth was a flat surface, in darkness. A dead, silent world. Unknown forms of life were asleep, below the surface of the land. Then the supernatural Ancestor Beings broke through the crust of the Earth from below, with tumultuous force.

The sun rose out of the ground. The land received light for the first time.



The supernatural Beings, or Totemic Ancestors, resembled creatures or plants, and were half human. They moved across the barren surface of the world. They travelled hunted and fought, and changed the form of the land. In their journeys, they created the landscape, the mountains, the rivers, the trees, waterholes, plains and sand hills. They made the people themselves, who are descendants of the Dreamtime ancestors. They made the Ant, Grasshopper, Emu, Eagle, Crow, Parrot, Wallaby, Kangaroo, Lizard, Snake, and all food plants. They made the natural elements: Water, Air, Fire. They made all the celestial bodies : the Sun, the Moon and the Stars. Then, wearied from all their activity, the mythical creatures sank back into the Earth and returned to their state of sleep.

Sometimes their spirits turned into rocks or trees or a part of the landscape. These became sacred places, to be seen only by initiated men. These sites had special qualities.

### **PHYSICAL WORLD: "OUR LAND OUR LIFE"**

**'We don't own the land, the land owns us'**

**'The Land is my mother, my mother is the land'**

**'Land is the starting point to where it all began. It is like picking up a piece of dirt and saying this is where I started and this is where I will go'**

**'The land is our food, our culture, our spirit and identity'**

**'We don't have boundaries like fences, as farmers do. We have spiritual connections'**

Land means many things to many people. To a farmer, land is a means of production and the source of a way of life. It is economic sustainability. To a property developer, it is a bargaining chip and the means of financial progress and success. To many Australians, land is something they can own if they work hard enough and save enough money to buy it. To Indigenous people land is not just something that they can own or trade. Land has a spiritual value.

### **THE HUMAN WORLD**

We are the Indigenous people of Australia. Aboriginal people are those traditional cultures and lands lie on the mainland and most of the islands, including Tasmania, Fraser Island, Palm Island, Mornington Island, Groote Eylandt, Bathurst and Melville Islands. The term "Aboriginal" has become one of the most disputed in the Australian language.

The Commonwealth definition is social more than racial, in keeping with the change in Australian attitudes away from racialistic thinking about other people. An Aboriginal person is defined as a person who is a descendant of an Indigenous inhabitant of Australia, identifies as an Aboriginal, and is recognised as Aboriginal by members of the community in which she or he lives.

This definition is preferred by the vast majority of our people over the racial definitions of the assimilation era. Administration of the definition, at least by the Commonwealth for the purposes of providing grants



or loans, requires that an applicant present a certificate of Aboriginality issued by an incorporated Aboriginal body under its common seal.

Sometimes non-Aboriginal people get confused by the great range and variety of Aboriginal and Torres Strait people, from the traditional hunter to the Doctor of Philosophy; from the dark-skinned to the very fair; from the speaker of traditional languages to the radio announcer who speaks the Queen's English. The lesson to be learned from this is that we should not stereotype people; that people are different, regardless of race.

Our people, of course, did not use the word "Aborigene" (from the latin ab, origin meaning "from the beginning" to refer to ourselves before the coming of non-Aborigenes. Everyone was simply a person.



## **THE DREAMTIME**

They say we have been here for 40,000 years, but it is much longer –

We have been here since time began. We have come directly out of the Dreamtime of our creative ancestors –

We have kept the Earth as it was on the first day.

Our culture is focused on recording the origins of life.

We refer to forces and powers that created the world as creative ancestors.

Our beautiful world has been created only in accordance with the power, wisdom and intentions of our ancestral beings.



## THE DREAMTIME

During the creation of our world, the ancestors moved across a barren land, hunting, camping, fighting and loving and in doing so shaped a featureless landscape.

Moving from Dreams to actions, the ancestors made the ants, the emus, the crows, the possums, the wallabies, the kangaroos, the lizard, the goanna, the snakes and all the food and plants.

They made the sun, the moon and the planets. They made the humans, tribes and clans.

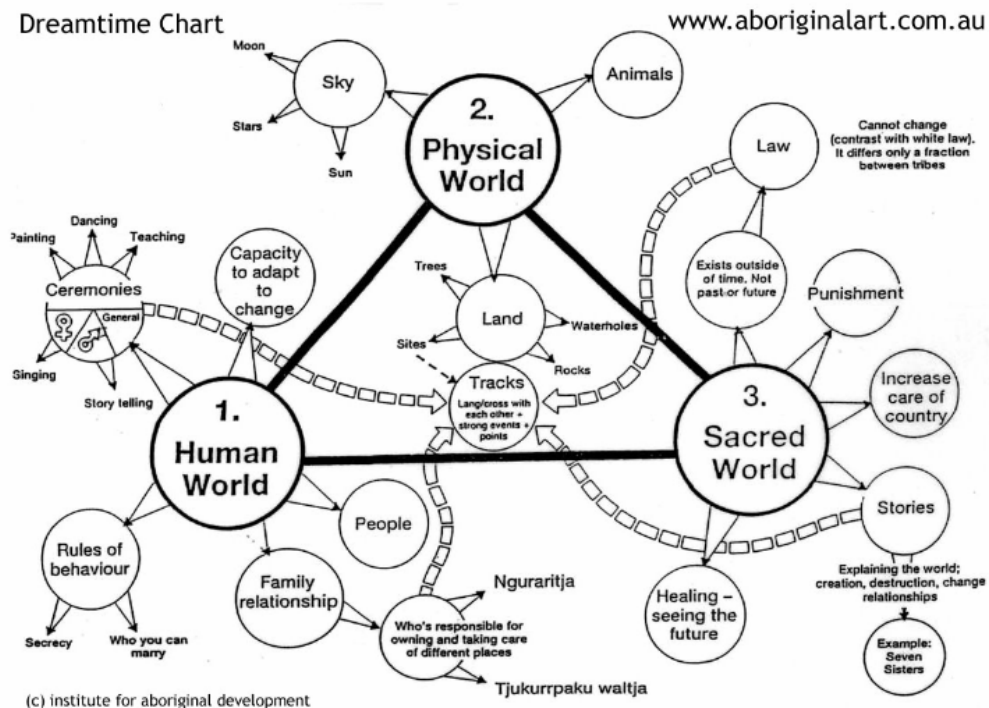
Each could transform into the other. A plant could become an animal, an animal a landform, a landform a man or a woman.

Everything was created from the same source.

Everything was created in our Dreamtime.

As the world took shape and was filled with species and varieties of the ancestral transformations, the ancestors tired and retired into

- \* the earth
- \* the sky
- \* the clouds
- \* and the creatures to live within all their created
- \* In our Dreamtime



### **TREE of LIFE via RED DUST HEALING:**

Red Dust Healing has assisted some 10,000 people, plus their families, with their variation and application of the Tree of Life.

Consider visiting these two short videos:

<https://vimeo.com/84833896> password: caritas

and here's the link to a video interview that CARITAS posted online:

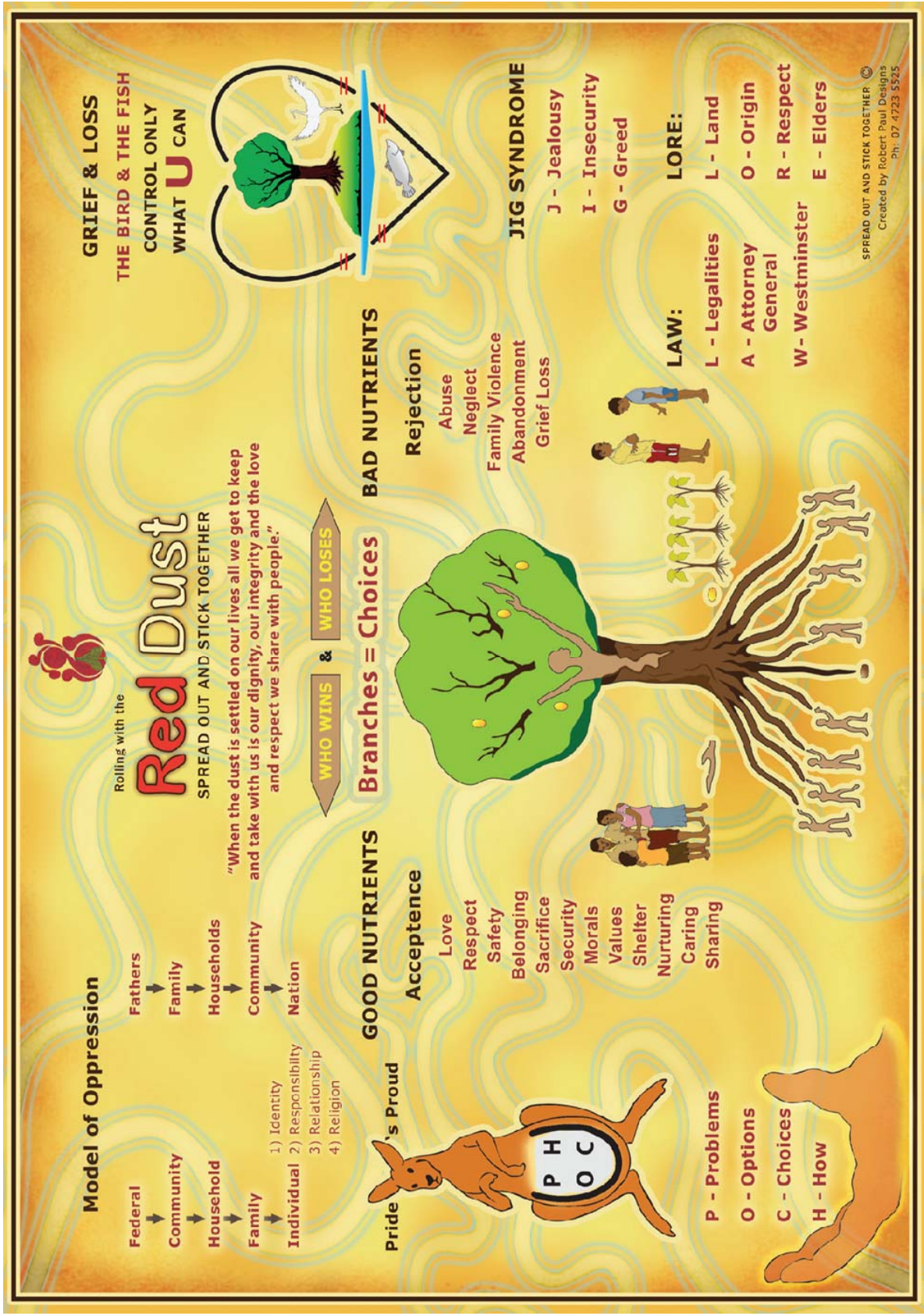
<https://www.youtube.com/watch?v=VFCAOsFZoPw>

The *Red Dust Healing* program is based on six philosophical principles that guide the work by trained facilitators.

#### **Philosophical Principles Guiding the *Red Dust Healing* Program:**

- Ancient traditional practices, morals and values should be understood as a way of addressing issues in today's society;
- Exploration of one's personal history addresses the question: *If we do not acknowledge who we are and from where we came, how can we know where we are going?*;
- Healing is defined as a spiritual understanding of self, identity, love, belonging, family, security, hurt, heartache, good times and laughter;
- Healing is a renewed grasp for hope that grows from developing love, respect and understanding of ourselves and others who support us. Healing comes from telling your story in a place and with people that offer acceptance and tools for going forward;
- Healing happens immediately, though progressively in the form of maintenance. Time and personalised support are required to learn and practice the new tools, negotiate systems that may still feel foreign or threatening, and refine one's ability to trust the heart over the head; and
- Helping men heal, in particular, will have a spreading positive effect on his relationships with his children, partner and family, as well as the community.

[www.thereddust.com](http://www.thereddust.com)



### LOCATION of Sets of the SACRED and INSPIRED WRITINGS of MU:

Six sets, each of more than 10,000 tablets, were carried from Mu subsequent to 70,000BC, possibly as recent as 20,000BC. Sets were located at:

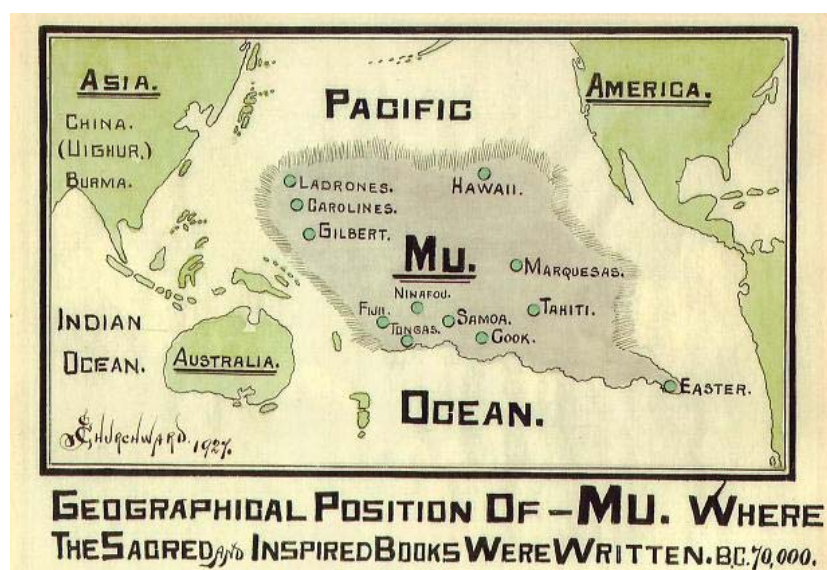
Khanassa or Kharaso – Tibet  
 Ayodhya or Ayhodia – Deccan Plateau, central India  
 Capital City of Uighurs in the Gobi Desert, Central China  
 Babylon in Mesopotamia  
 Maioo in Nubia, Upper Egypt via India, later also Sais on the Nile Delta via Atlantis  
 Mexico City

Each of the great avatars studied the Sacred and Inspired Writings of Mu, all except Mohamed and possibly Topiltzin and Hiawatha though Topiltzin's and Hiawatha's teachings are identical to those of Jesus:

BC=BCE AD=CE

Note: Lunar cycles were considered years, then seasons as years.

As a result of Lemuria (Mu)	we have Sacred Inspired Writings	70,000 BC (Chaldi College)
As a result of Osiris,	we have Osirian	20,000 BC (born in Atlantis)
As a result of Thoth,	we have Osirian in Lower Egypt	14,000 BC (coming from Atlantis)
As a result of Krishna,	we have Hinduism	3,228 BC (birth dates)
As a result of Abraham,	we have Judaism	1,750 BC (+/- 250 years)
As a result of Moses,	we have Judaism and Moses books	1,200 BC (approximately)
As a result of Zarathushtra,	we have Zoroastrianism	630 BC he lived for 242/4 years
As a result of Lao Tzu,	we have Taoism	604 BC
As a result of Varadhamana Mahavira	we have Jainism	599 BC he lived for 72 years
As a result of Buddha,	we have Buddhism	560 BC
As a result of Confucius,	we have Confucism	551 BC
As a result of Jesus,	we have Christianity (7 Jan 7BCE)	7 BC (died 13 March 29CE)
As a result of Mohammed,	we have Islam	570 AD
As a result of Topiltzin Ce Acatl Quetzalcoatl – Lord of the Toltecs		923 AD to 947 AD period of reign
As a result of Hiawatha	we have Iroquois Confederacy	1550 AD
As a result of the Second Coming	we have Divine Love	31 May 1914 AD to 7 January 2016



A brilliant distillation of the essential spiritual truths and the world's great religions is exemplified by the following:

- |     |                                 |   |
|-----|---------------------------------|---|
| 1.  | <b>Christianity</b>             | is the path of love and forgiveness.                                |
| 2.  | <b>Buddhism</b>                 | is the path of compassion.  |
| 3.  | <b>Judaism</b>                  | is the path of living by sacred law.                                |
| 4.  | <b>Baha'i</b>                   | is the path of unity and peace.                                     |
| 5.  | <b>Islam</b>                    | is the path of submission to the will of God.                       |
| 6.  | <b>Confucianism</b>             | is the path of deliberate tradition.                                |
| 7.  | <b>Taoism</b>                   | is the path of ultimate reality.                                    |
| 8.  | <b>Native American Practice</b> | is the path of primal spirituality.                                 |
| 9.  | <b>Shintoism</b>                | is the path of tribal ancestry.                                     |
| 10. | <b>Hinduism</b>                 | is the path of knowledge, action and devotion.                      |
| 11. | <b>Divine Love</b>              | <b>is the path to at-onement with the Father and to the Heavens</b> |
- P51 Discovery of the Presence of God

**The First Religion:** The Sacred Inspired Books were written for the purpose of teaching early man religion; therefore, man's first religion was the teachings of the Sacred Books.

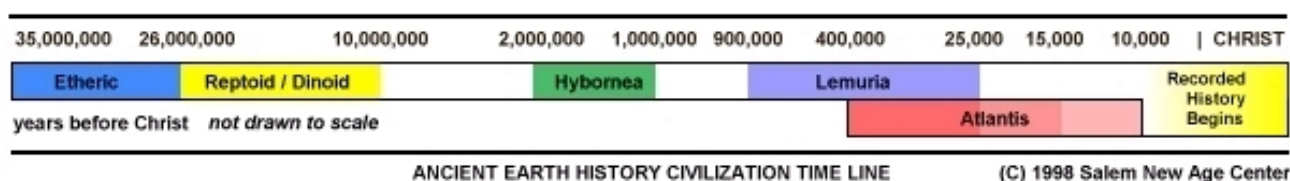
The basis of the first religion taught to man was – Love. The Love of Man for his Heavenly Father. The Love of the Heavenly Father for his son man, and the love of man for all of God's creations.

Man was taught to approach God in reverence but without fear or trepidation, just as a child would approach his earthly father knowing that open loving arms were extended to receive him.

Early man knew no fear of God, because he loved God and he knew God loved him in return.

All of the ancient teachings were the same all over the world, it was a universal church without sect, creed, theology or dogma.

Every teaching was plain and simple without a particle of theology. The most ignorant could understand every phrase in it. There was nothing of any kind indefinite. It was impossible not to understand it thoroughly. Man was taught to approach the Heavenly Father, not with fear or dread, but with confidence, and above all, Love: as a child would run to its earthly father who is standing with outstretched arms to receive it. Love stood at the head of the 12 great virtues, because Love governs the Universe and the Heavenly Father is The Great Love.



## WORLD TEACHERS – The First Parents, Aman and Amon, and Jesus of Nazareth and Mary:

**The First Religion, is the core religion from which all world religions are founded:** The Sacred Inspired Books, of Lemuria (Mu), were written for the purpose of teaching early man religion; therefore, man's first religion was the teachings of the Sacred Books, the Sacred and Inspired Writings founded indirectly upon the teachings from Aman and Amon, our first parents (not Adam and Eve).

**Our Heavenly Parents are almighty, all powerful, infinite, and at all times loving. The love of our Heavenly Mother and Father for Their sons and daughters has been and is always infinite and ever present. As one's faith in our Parents evolves, man's love for his Them will have no limit. As man grows in his love, so will man grow in his love for all of God's creations.**

**Approach our Heavenly Parents in reverence, without fear or trepidation, just as a child approaches his earthly mother and father knowing that open loving arms are extended to receive him at all times. As one grows in his love of our Parents, one becomes to know with certainty that God loves him in return, at all times, and that fear is an illusion created by man's mind.**

All of the ancient teachings were the same all over the world, it was a universal church without sect, creed, theology or dogma.

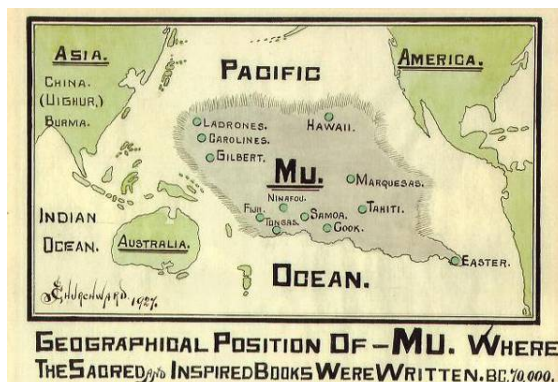
Every teaching was plain and simple without a particle of theology. The most ignorant could understand every phrase in it. There was nothing of any kind indefinite. It was impossible not to understand it thoroughly. Man was taught to approach our Heavenly Mother and Father, not with fear or dread, but with confidence, and above all, Love: as a child would run to its earthly father who is standing with outstretched arms to receive it. Love stood at the head of the 12 great virtues, because Love governs the Universe and the Heavenly Mother and Father is The Great Love.

Jesus, in the 1<sup>st</sup> century, embraced Divine Love that was rebestowed for all of humanity at his birth, gave us the Prayer for Divine Love, and introduced a commandment:

**Through one's Feeling Healing and with the Divine Love we can at all times embrace the will of our Mother and Father and achieve freedom from error and harmful ways, thus finding our way home! And to move along this path we simply develop our embracement of: God's Divine Love; by praying for it, asking for it, and receiving it.**

**By embracing the commandment provided in the 1<sup>st</sup> century, namely the first: "This is my commandment, that ye love one another even as I have loved you."**

**As our soul condition steadily grows in love we step away from causing any harm to others which would also bring about consequences. Also as our soul development progresses, our self love grows which also enables us to step away from causing any self harm which would also bring about consequences.**



**SPIRITUALITY was and will return to be the WORLD'S LEADING WAY OF LIFE:**

The ancient Sacred Inspired Books were written for the purpose of teaching early man religion; therefore, man's first religion was the teachings of the Sacred Books.

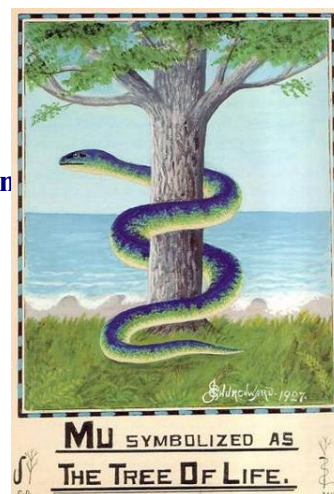
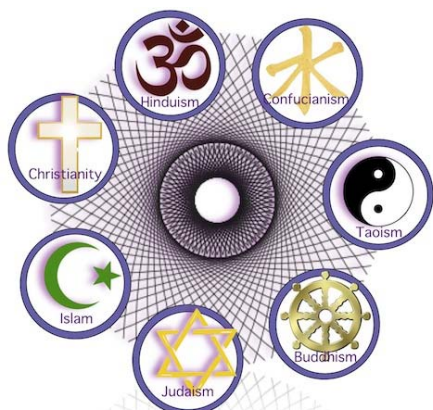
The basis of the first religion taught to man was – Love. The Love of Man for his Heavenly Parents, the Love of the Heavenly Mother and Father for his son, man, and the love of man for all of God's creations.

Man was taught to approach the Creator in reverence but without fear or trepidation, just as a child would approach his earthly mother and father knowing that open loving arms were extended to receive him.

Early man knew no fear of God, the Mother and Father, because he loved the Mother and Father and he knew They loved him in return.

All of the ancient teachings were the same all over the world, it was a universal church without sect, creed, theology or dogma.

Every teaching was plain and simple without a particle of theology. The most ignorant could understand every phrase in it. There was nothing of any kind indefinite. It was impossible not to understand it thoroughly. Man was taught to approach the Heavenly Parents, not with fear or dread, but with confidence, and above all, Love: as a child would run to its earthly father who is standing with outstretched arms to receive it. Love stood at the head of the 12 great virtues, because Love governs the Universe and the Heavenly Parents is The Great Love.



Now all peoples of all faiths and way of life can embrace the universal gift of our Heavenly Parents. This gift was known to the first family and again known in the 1<sup>st</sup> and 2<sup>nd</sup> century. Living with the Love is universally being taught through the teachings from 31 May 1914 and ongoing, by our Celestial Friends, and that gift is the light golden blue energy substance being the Divine Love of our Heavenly Parents that is shared with all who so ask to receive it. It is that simple, ask and you will receive the Love substance of God instantly.

**God's Divine Love: Pray for it, ask for it, and receive it.**

**Our Heavenly Parents simply desires for us to ask for Their Love.**



### CREATION, DEVOLUTION and EVOLUTION:

Aman and Amon (also called Andon and Fonta), our first parents, physical being was born of natural parents, who in turn had been born of their own parents. Their bodies were not created instantaneously, but evolved just as all of God's creatures evolved. Aman and Amon were both nurtured physically as infants and then children. **But our first parents' souls were placed in them when they were already adults.** They had no clear memories of their earlier life before that great moment. As soon as they possessed a soul, all of the normal human psychological manifestations appeared.

There were aunts and cousins, parents and grandparents. But they were not human like Aman and Amon – they were really animals, though of the same species. Aman and Amon wandered off from the family, since they could find no way of relating to them at all. How could they? They were incapable of rational thought, speech, or anything human. Aman and Amon knew that forevermore they were apart.

They were indeed a primate species of humanoids. But Aman and Amon (they were not Adam and Eve) were more beautiful than their animal relatives, and knew, even from their very appearance, that they were marked even by Nature to be different.

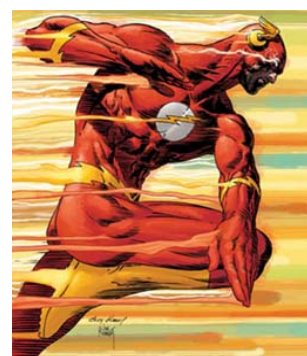
The human body, without a soul, calibrates at 200 on Dr Hawkins' Map of Consciousness. Domestic animals typically calibrate 200 to 250. Our soul is the source of our personality, intelligence, and memory. Our soul is formed from the energy substance of natural love. There is nothing of the Divine within our soul.



The First Parents did have the propensity to receive Divine Love, however it was not yet bestowed upon man, that occurred in the 1<sup>st</sup> century with Jesus and Mary. Man, left to his own perseverance and determination can develop into the perfect man with only Natural Love, however that is a slow and tedious pathway and limited to perfection of the soul, fit only for the 6<sup>th</sup> natural love spheres.



By embracing Divine Love and one's Feeling Healing, man can become fitted to enter the Celestial Heaven and higher in rather quick time. One's life on Earth, living with the Love and embracing Feeling Healing, can be that of living in Heaven!



**Further, Feeling Healing with Divine Love, has a powerful positive effect on the physical body, balancing the hormones and generally promoting physical health, which is really the same thing as saying that the state of a mortal's soul impacts directly on that mortal's physical health.**

## **The Purpose of Divine Love:**

Spirit: Judas Medium: Al Fike Location: Gibsons, BC

Date: March 31, 2016

God bless you my dear friends, beloved souls, I am Judas.

I have come to speak about the purpose of Divine Love. I have been with this instrument often when he reads the book in which I collaborated within writing (Judas of Kerioth) and he has gleaned much from what he has read and I am well satisfied with the efforts that we have made in this publication which is indeed meant to be widely distributed.

To understand Divine Love, one must go to the very beginnings. When mankind was created the Heavenly Father selected an appropriate vessel to receive a special gift of the reflection of God Himself in the form of a soul. And that soul was given and placed within a male and female human body. And with the gift of this soul came great promise, great promise and great potential. And God had great plans for his new creatures, His most beloved and beautiful creation. The only creatures to receive a soul, an individuated soul. And what was the purpose for this soul? The purpose was to reflect the beauty of God and in some ways reflect the attributes of God, in the living being in the flesh and in the spirit.

And in order for this expression to be full and rich, God gave the gift of ‘free will’ with the intention that with the wisdom inherent within a pure soul, which of course these two souls were pure in their incarnation, free of any sin and error, and the Father placed them within an environment which nurtured them fully and gave them free reign upon this Earth imbued with all the wisdom and perception a purified soul may have. And then He offered another gift, a more beautiful gift, the gift of His Essence.

Not the mere reflection of His Being, but the Essence of His Being. That it may infill the soul with attributes and abilities similar to that of God. It could never be equal to God, for God is infinite in His Attributes, in His Love, in all that He is. But these pearls of souls may have that Light, those qualities to a degree that reflects God. And so this Gift was offered, it was offered as a choice. And it was rejected. For the happiness for those original beings was great and full in their existence as it was. And so they decided that they were indeed fulfilled in their lives as they were, their beings upon this world.

And so the Gift was withdrawn until another beautiful soul was incarnated into this world free of sin and error, as you know, our dear brother Jesus brought this Gift back to humanity.

And this Gift was offered to Him and he accepted for he knew this was his purpose in the world to bring this Gift again to humanity and to show by his example, his knowledge and teachings what this Gift is, and how to obtain It. And I was one of his disciples, one of many. And I, along with all of my brothers and sisters who followed Jesus, was very unclear as to what this Gift was. We saw embodied within our dear brother great power and wisdom, love and affection, gifts of healing and insight and perceptions which we did not have. And we glorified our brother, we put him upon a pedestal and we saw him as different and far above us. But we did not understand why he was different. How he was able to manifest his beautiful spiritual gifts, how he was able to love to such a pure degree.

And the essence to my betrayal to my dear and beloved brother was a naïve perception that he would turn the tables upon the oppressors and become the ruler of our land, a true king. You can imagine my horror at what happened. And you know my story.

There was great grief that was shared amongst my brothers and sisters of the murder of our dear and beloved Messiah, how distraught we all were. And yet he reappeared and again reiterated his message and besieged us to pray for this Love, this Love Divine. Yes, my brothers and sisters came together in prayer and received the Pentecost, it changed them. It gave them the insight which Jesus longed to show us in his ministry.

We understood the power of God's Love infilling our souls taking us beyond the human condition to a place of greater joy and harmony and peace and Light, closer to God. And you my dear and beloved friends have walked this road for some years now and you have gotten glimpses to the power of this Love, what it can do, how It does indeed change your thinking and being, what motivates you, and your perceptions of God and of life and of purpose. This Truth exists. The Truth of God's Love and the power of God's Love.

**In the beginning It was lost, then It was found again and in many ways lost again and now found again.**

And you have the opportunity, just as those who followed Jesus many years ago have, to express this Truth in the world. It is difficult because of the nature of this Gift. You can perceive the manifestations of it, you can feel the power of it, but can you touch it and see it? No, my friends, it is at the soul, it is a power within the soul. It must be experienced in an awakening, an opening, a sense of its reality. So just as our dear brother Jesus was challenged to convey the Truth of this Love, just as the first parents (Aman and Amon) did not understand the true value of this Gift given by God, just as you struggle to truly speak and convey and teach and demonstrate this wondrous Truth.

There is no sure way to bring another to these living waters and to drink, for God gave each soul free will, God allowed each soul to choose. And so it is, and so it shall always be. A choice.

This does not mean you should be quiet about this Truth, but indeed your persistence and your desire to teach of God's Love is a great gift in this world. All who attempt to show this Truth to others are blessed indeed, for this is God's Will. That all humanity will be given this choice and you are a part of God's plan to bring this choice to humanity.

And that part of you that is human brings you some confusion and doubt. The part of you that is your soul eager to be reunited with its Creator, to resonate in that deep soul awareness and being, knows and is in many ways already redeemed. For now you cannot turn back on this path, you only can move forward. And God will usher you forward upon this path, streaming His Love into your soul, caring, protecting, guiding, and showing you the way forward. And your eyes begin to open, your ears begin to hear His Voice. Your longing intensifies and you walk more firmly upon this road, this road to redemption, freedom, joy, infinite happiness, fulfilment, and at-onement.

But someone told you of this great possibility, this Love Divine. So you need to tell others. You must tell of your joy, of your experiences with God, your happiness. How you have been healed and carried and nurtured in love. Your examples, your words, your prayers, your thoughts, all contribute to this message which must be given, that God wishes for His Universe, the universe of souls that He has created, that each one be a great shining pearl of light infused with His Essence and in harmony with Him, at-one.

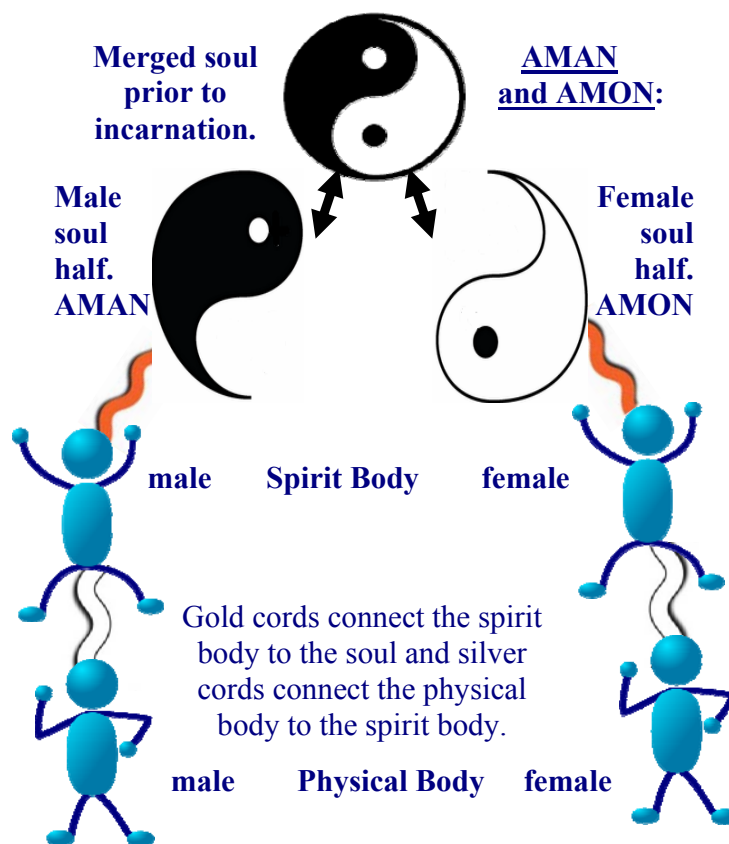
It is only through this Gift of God's Essence that this can be so and this was God's intended purpose for every soul to receive this Gift of Love, to come to that place of at-onement and to accompany God on that infinite journey of life and existence.

And you my brothers and sisters, are with us upon this journey and we embrace you and welcome you on this wondrous road of discovery, of infinite soul growth and at-onement with God. And we love you, we love you all and we wish to embrace all of humanity in this way as God wishes His children to be gathered together in His Love.

Is this not beautiful my friends? This knowing, this acknowledgement of God's great Gift to His most wondrous creations and do you not sense within your soul the joy of knowing this and living this and being a part of it? Being a part of something truly, truly beautiful and glorious.

Carry on in your efforts and we will accompany you upon your journey. There is much to see, to experience, to know and you have much to share with your brothers and sisters. Continue to be open to your guidance, to be open in loving ways to all you meet. And may your smile and the twinkle in your eyes reflect the great Truth of God's Love that resides within your soul. In this way you speak Truth as you attempt to embrace all that you meet in Love.

God bless you, I am happy to speak through my friend. God bless you, I am Judas and I love you.



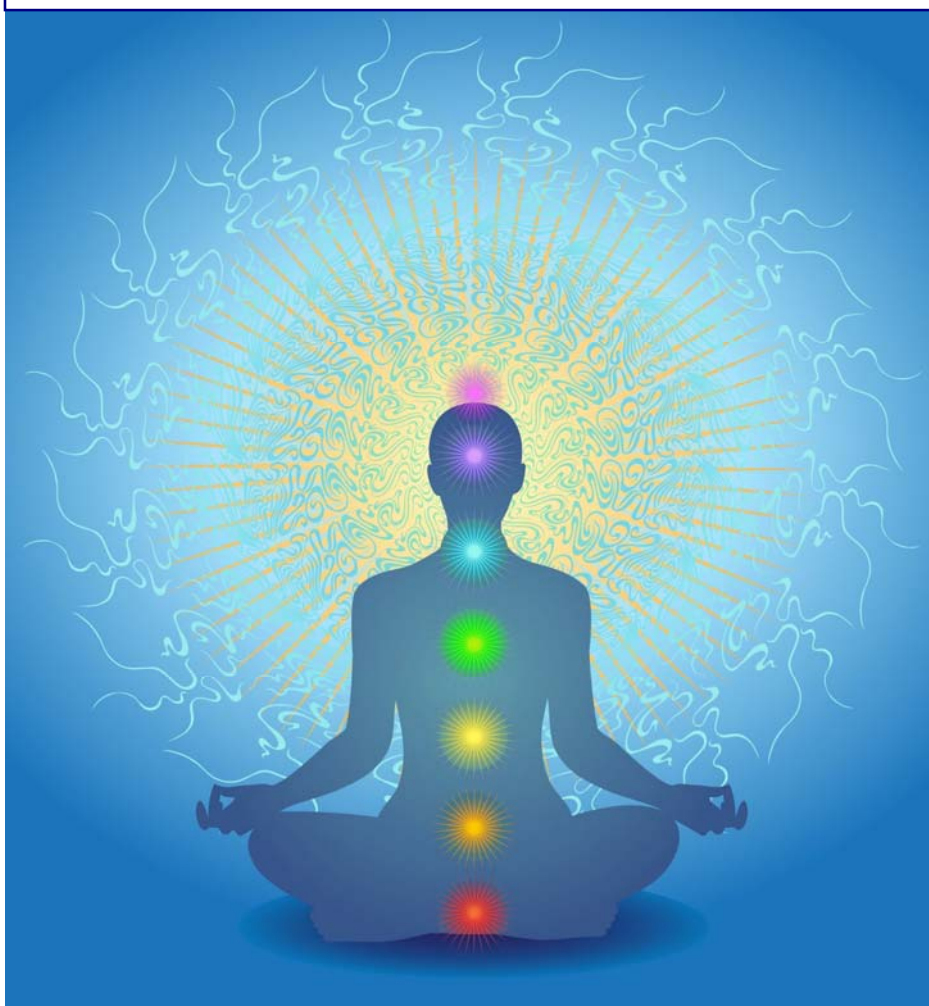
**Divine Universe:**     **183. I introduce the Eternal Spheres**  
                              **185. Elias calls in**

20 December 2012  
21 December 2012

**Every individual who resides in the Eternal Spheres will meet with the First Parents** as this provides the fulfilment insofar as knowing and being able to identify one's mortal origins.

The Eternal Spheres extend from the Celestial Heaven. **The First Parents reside in the First Eternal Sphere.** They reside there as part of their service to the Eternal Spheres and it is not uncommon to see them. They act as advisors to all those who commence their lives in these Eternal Spheres and they do visit the Spheres of the Celestial Heaven regularly. **It is quite nice to know that the Master resides in the Last Sphere of the Celestial Heaven and the First Parents reside in the First Eternal Sphere.**

**Divine Love is a light golden blue energy substance. As it fills one's soul, the substance may overflow into one's spirit body. The radiance of one's spirit body with Divine Love can be likened to the midday sun, whereas a personality only with Natural Love may only have the ambiance of a burning candle in comparison.**



**DIVINE LOVE does not TRANSFORM one's SOUL  
FEELING HEALING is what TRANSFORMS one's SOUL**

The Divine Love does transform our soul from Natural love into Divine Love. It's our Feeling Healing that 'transforms' or heals our erroneous expression of Natural love. We have to 'heal' and so perfect our Natural love, so it can then be transformed by the Divine Love.

Divine Love does not even begin the real work of transforming one's soul, for those who focus upon receiving Divine Love to the exclusion of embracing one's Feeling Healing, they are just expanding their mind's control over themselves. Should this be one's passion, then upon passing into the spirit Mansion Worlds they will find that they can continue along this path all from within the Divine Love followers segment within the first natural love Mansion World! Yes, only from within the first natural love Mansion World.

Most of humanity on Earth does not want to face the very truth their feelings are making them feel every day of their life. So if they want to keep living in the spirit Mansion Worlds as they did on Earth, in complete denial of their feelings and the truth they are to shown about their wrongness, they can.

However, for those who have embraced Divine Love and begin to engage in their Feeling Healing process to begin the transformation of their soul, they will be able to sense the Divine Love already within their soul 'driving them on'. One's understanding and adjusting will be changing rapidly to that of embracing all about the Healing and doing it – all being supported by the Divine Love that one may have received previously. All one may have done with the Divine Love may make their introduction into their real Healing, by using their feelings, much easier than it is for other spirits from the mind worlds who are at the same time having to wrestle with many of their old religious beliefs or mental programming, having to take on a whole new mind-set which one could see would take some of them years, whereas for someone who has been longing for and receiving Divine Love for some time it may be only a matter of weeks. This also applies to those living in the physical.

It is the Feeling Healing process that transforms one's soul towards perfection, towards the ability to fully express one's true personality as given to us by our Heavenly Parents, it is the Divine Love that then fits that transformed soul to be able to enter the Celestial Heavens.

Reference:                   Pascas Care Letters – Divine Love does not Transform

**UNIVERSALITY of the LOVE:**

**Should you be open to and communing with our Heavenly Parents, our Mother and Father, no matter who you are and where you are, your desire for Their love will be showered upon you. We do not need to be anywhere in particular or be receiving guidance from any particular person, our relationship with our Heavenly Parents is a very personal one to one communion that can bring about a flow of Their Divine Love into one's soul anytime we desire as often as we desire, anywhere we may be no matter what we may be doing. It is our choice and our free will that only needs to be applied. Embrace and enjoy the Love.**



**EXALTED WORLD TEACHERS:**

Mary and Jesus, the Regents of Nebadon, are the most exalted personalities throughout our entire universe. They have free reign and access to all planes of existence. They reside within the highest plane of the highest sphere within Nebadon. Their teaching guidance and focus is upon those throughout the Divine Love Mansion Worlds and the Celestial Heaven. It is the Divine Love spirit world spheres 3, 5 and 7 as well as the Celestial Heaven spheres 8, 9 and 10 that he opened immediately upon his death in the year 29 AD.

Subsequently, Andon and Fonta (also called Aman and Amon), our first parents, proceeded to enter the Celestial Heavens, Eternal Spheres, and the Infinite and Universal Spheres. Aman and Amon are very present within these regions.

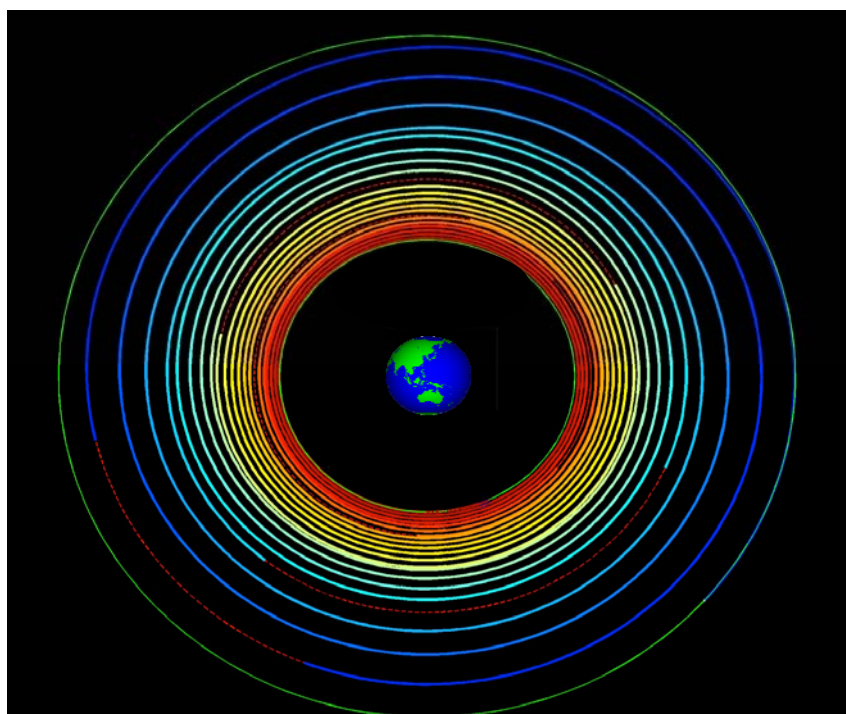
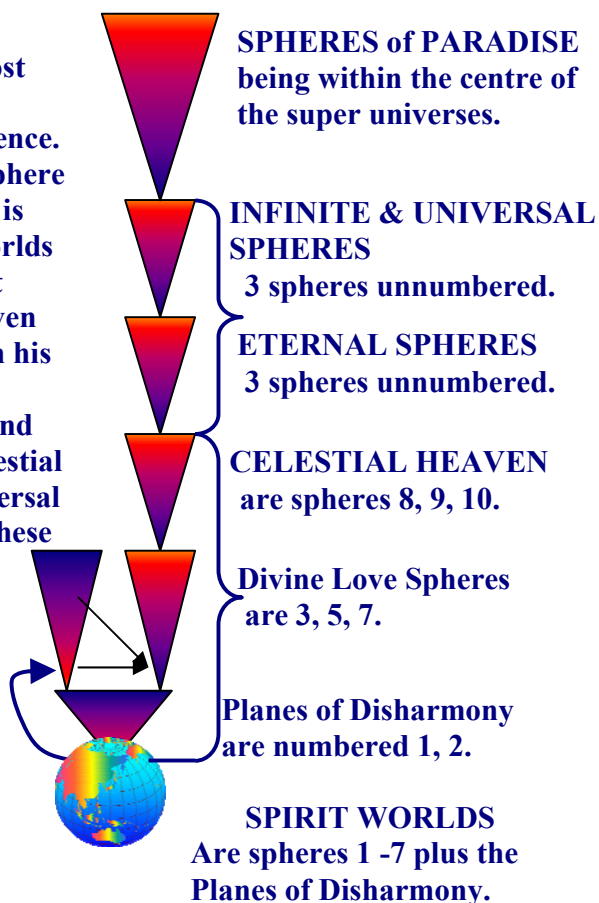
Self reliant man, by his own perseverance, is his own teacher within the Natural Love Spheres. Upon embracing Divine Love, then one will be able to enter the 3<sup>rd</sup> Divine Love sphere and progress exponentially through the Heavens.

Upon the death of one's physical body, we transition to the 1<sup>st</sup> Natural Love spirit world to assimilate and commence socialising.

There is no such thing as eternal damnation. The two Planes of Disharmony are the closest planes to Earth. We all can grow in love once we so choose to do so.



Natural Love Spheres are 1, 2, 4, 6. Perfection of natural love is achieved within sphere 6, the peak. Progression in Divine Love commences within Divine Love Sphere 3.



**Note: The first Divine Love Sphere and the first Sphere of Disharmony are confused with planes within the 1<sup>st</sup> Natural Love Spirit World.**



## Feelings First Spirituality The New Way

**Feelings First**  
**FF**  
**Feeling Free**

The New Way, Feelings First Spirituality  
Learn to live with God through your Feelings

Accept, express and long for the truth of your feelings

Be free in your feelings  
Free your feelings from your mind's control  
Live true to your feelings; your feelings are your true self  
Live true to yourself through your feelings



Live true to yourself by living true to your feelings.  
Long for the truth of your feelings.

Accept / Express / Bring out ALL of your good, and most importantly,  
BAD feelings.  
Want to understand why you're feeling them.  
Use your surface feelings to take you deeper into your repressed and  
hidden feelings.



The Feeling Way is the True Way.  
Your feelings are your spiritual guide.  
Your feelings will take you to God.



Your feelings will show you the truth of your relationships, including your relationship with God; and if anything is wrong, untrue and unloving, then why it is.

Our feelings are sacrosanct and we should respect them accordingly. And we should NEVER block them out, ignore, override, banish, deny or reject them, because if we do, we're only doing that to ourselves, as Our Feelings Are Our Self.

Our feelings are the gateway to our soul. Our feelings are the closest we can get to our soul. Knowing the truth of our feelings is knowing the truth of our soul, and knowing the truth of God.

Feelings First Spirituality is the True path for humanity.  
It embraces all people.  
It completely unifies the world.  
Everyone can relate to everyone else through their feelings.  
And we can all live the truth that comes from our feelings, all sharing the same truths as we express and have the same feelings.  
No one need be left out; no one is more special than anyone else – we are all united in Truth through our feelings.  
So with and through our truth we live our lives, therefore without the need of any man-made mind-laws, rules and restrictions that limit self-expression as inspired by our feelings.



The New Way, Feelings First Spirituality is what is to replace all man-made, mind-contrived religions that so many people have enslaved themselves to. The New Way, Feelings First Spirituality will set us free of all that control, ending the Rebellion and Default within ourselves as we do our Feeling-Healing, and ending such control and spiritual stagnation in the world.

Bring on the End Times – get it over and done with! Let's all see that Jesus is not going to come again, that Prophecy has failed all the mind-controlled platforms. Allow such false systems of belief to die their long-awaited natural death, they've overstayed their welcome, it's now time they fade away. So let us show such antiquated, erroneous systems of belief the exit and bring on the fresh liberation of discovering the truth of how we are to live for ourselves, each of us personally in our lives, and all by looking to our own feelings for it. Self-revelation through our feelings is the way to go.

The Way of the Mind is ending, and is really the End Times – the End of our mind control, and **it's about time!** With the Way of our Feelings replacing it.

The End Times means the end and therefore a New Beginning. And that new beginning is a whole new Spiritual Age – an age based on self-revelation of truth through one's feelings, coupled with and supported by higher revelations from the Celestial spirits, angels and nature spirits.



The Feelings First Spirituality is the True Way to God because it helps you get to know God, helping you to reach out, connect and be personal with God, and do God's Will, all through your feelings. It is the only true way of getting to know the God of Feelings – our beloved Heavenly Mother and Father, the Great Soul of Divine Love.

Love comes through our feelings and not our mind, as we've all been wrongly led to believe.

**Feelings First; then comes The Truth; then comes Love.**

**LOVE is the Religion of Feelings, being:**

**Feelings First Spirituality, The New Way**



my  
**House** is your  
**Paradise**  

**HOME**

# **PASCAS PARK**

## **"Beacons of Light"**

### **around the globe**



**This document overall:**

**Map of Consciousness calibration 640**