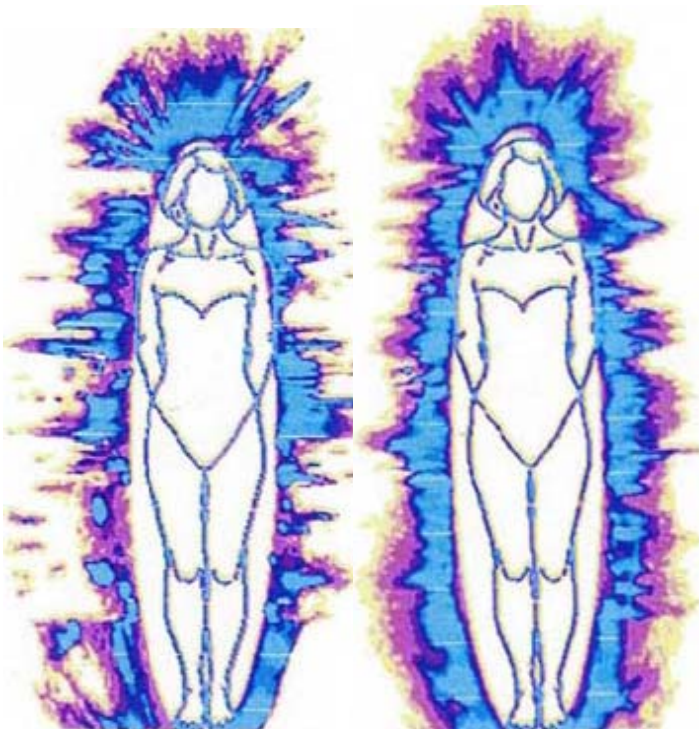


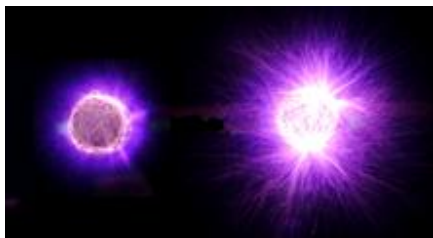
# PASCAS CARE

## Energy Enhancement System



BEFORE

AFTER



**“Peace And Spirit Creating Alternative Solutions”**

**PASCAS FOUNDATION (Aust) Ltd**  
**ABN 23 133 271 593**

**Queensland, Australia**

**Pascas Foundation is a not for profit organisation**

**www.pascasworldcare.com www.pascashealth.com**

**Em: [info@pascasworldcare.com](mailto:info@pascasworldcare.com)**

**Em: [info@pascashealth.com](mailto:info@pascashealth.com)**

## PASCAS INTRODUCTION:

Documents assembled by Pascas are provided for your individual assessment and exploration. The contents are sourced from a variety of avenues and publications. Every endeavour is made to determine that the contents are of the highest level of truth and veracity. At all times we ask that you go within yourself, to ascertain for yourself, how the contents resonate with you.

Pascas provides these notes and observations to assist us all in the development and growth of our own pathways and consciousness. Pascas does not hold these contents as dogma. Pascas is about looking within oneself. Much of what we are observing is new to us readers and thus, we consider that you will take on board that which resonates with you, investigate further those items of interest, and discard that which does not feel appropriate to you.

Kinesiological muscle testing, as developed by Dr David R Hawkins and quantified by his Map of Consciousness (MOC) table, has been used to ascertain the possible level of truth of documents. Such tested calibration levels appear within the document. We ask that you consider testing same for yourself. The technique and process is outlined within Pascas documents, such as Pascas Care – Energy Level of Food. From each person's perspective, results may vary somewhat. The calibration is offered as a guide only and just another tool to assist in considering the possibilities. As a contrast, consider using this technique to test the level of truth of your local daily newspaper.

Contents are not to be interpreted as an independent guide to self-healing. The information sourced herein is not from a doctor or doctors, and any information provided in this document should not be in lieu of consultation with your physician, doctor, or other health care professional. Pascas, nor anyone associated with this document, does not assume any responsibility whatsoever for the results of any application or use of any process, technique, compound or potion as described within this document.

The sources of contents are noted throughout the document. In doing so, we acknowledge the importance of these sources and encourage our readers to consider further these sources. Should we have infringed upon a copyright pertaining to content, graphics and or pictures, we apologise. In such cases, we will endeavour to make the appropriate notations within the documents that we have assembled as a service via our not for profit arm, to our interested community.

We offer all contents in love and with the fullness of grace, which is intended to flow to readers who join us upon this fascinating journey throughout this incredible changing era we are all experiencing.

Living Feelings First, *John.*



***“Never can one man do more for another man than by making it known of the availability of the Feeling Healing process and Divine Love.” JD***

**ENERGY ENHANCEMENT SYSTEM:**

www.eesystem.com

**Call US 1-877-777-9465**<http://energyenhancementsystem.com/index2.html>What is Energy **Enhancement** System?

The **Energy Enhancement System™ (EESystem™)** generates multiple bio-active life enhancing energy fields, including "scalar waves" which can allow cell regeneration, improve immune function, provide relief from pain, detoxify the body, elevate moods, and assist in balancing right and left hemispheres of the brain to increase energy levels.

This stunning technology, which was developed over 15 years by Dr. Sandra Rose Michael, uses custom-installed computers to generate morphogenic energy fields that can promote healing. The **EESystem** has been recognized at dozens of medical, scientific and professional conferences around the world.



The **EESystem** has been installed throughout the United States and internationally to promote wellness, healing, relaxation, purification and rejuvenation. This ecologically and environmentally safe system is used by individuals, doctors, and therapists as well as Meditation and Wellness Centres to improve human development and psychological well-being.

The **Energy Enhancement System** combines Body, Mind, Spirit, and Science to help you achieve peak performance and reach higher states of health, consciousness and self-actualization. The future is here.

**"The EESystems is a new technology that generates a therapeutic energy field that can raise the energy level of every cell in the body to its optimum level. This is the most extraordinary technology I have seen in twenty years of practice as an Alternative Health Care Doctor."**

**- Dr. James Deboor**

What **EESystem** can do for you.

We've put together a sample of actual users experiences after trying the **EESystem**. Remember, every users experience is different.

The **EESystem** can help you achieve you maximum potential by recharging your energy. Imagine what this can do for you!

- **Feelings of Calmness, Harmony, Zen,**
- **Oneness, Peace, Relaxation**
- **Natural Healing & Rejuvenation**
- **Sense of Increased Energy**
- **Better Mental Health**
- **Relief from Severe Pain**
- **Living in the Now**
- **Improved Existentially**

- **Relief from Depression**
- **More Emotionally Clear & Free**
- **Rapid Post Surgical Healing**
- **Improved Inner Direction**
- **Less Attachment to Past Traumas**
- **Being more Present**
- **Better Response to Stressors**
- **Detoxification**
- **Peak Performance**
- **Improved Blood Profiles**
- **Mental Flexibility/Charity**
- **Improved Spontaneity**
- **Improved Time Competency**
- **Living more Authentically**
- **Improved Self-Acceptance**
- **Sense of Self-Awareness**
- **Super Learning States**
- **Self-Confidence & Self-Love**

**Scalar** fields have always existed.

You may not have heard of Scalar fields, but they are well known in astrophysics, geology, and hydrodynamics.

A Scalar field is known as a fifth-dimensional non-linear field. Scalar fields exist out of relative time and space, thus they do not decay over time or distance from their source. They are unbounded and capable of passing through solid matter.

The human body has crystalline structures in every cell wall that are capable of holding a charge. When the human body enters a Scalar field the electro magnetic field of the individual becomes excited. **EESystem** uses Scalar technology to return the body to a more original and appropriate electrical matrix.

The **EESystem** has been clinically proven to boost human cell regeneration, immune functions, and neurotransmitter functions. It can help eliminate and nullify effects of disruptive frequencies in the body while optimizing cellular energy levels to 70-90 millivolts.

This means that **EESystem** can significantly increase your energy, mental clarity, enhanced health, and overall well-being.

## **Frequently Asked Questions**

### **How do I prepare for a EESystem session?**

The following is recommended in order to get the maximum benefit from the **EESystem**: Close your eyes and start to breathe normally. Relax and allow yourself to go as deep into a state of relaxation and stay there as long as you can. You may hear people talking or sounds such as those found in a tropical rainforest or other environments. This is normal. You may feel heaviness and/or warmth in your head, arms, legs or body as well as a tingling sensation in your fingers and toes. You may feel the skin of your face start to tighten and/or tingle. You may also have sudden realizations, feelings, and visions, all positive in nature.

Five minutes before your session ends, someone will come in and remind you that you have 5 minutes left. Take this opportunity to remember your experience and ask for what you want in your life, "your

intention". Your desires and intentions work together. Have a clear intention and purpose of what you want to achieve in your life before going into the **EESystem**. It has been observed that the willingness for a positive experience during and after a session in the **EESystem** can start healing.

### **How long is a typical session?**

Typically, a session lasts 1-2 hours. Optimal length is 2 hours.

### **How many sessions are necessary? How long do the effects last?**

This depends on what you want to accomplish and how much the Scalar Energy affects your body. Although this is difficult to quantify, the effects of the energy tend to be cumulative and, relative to one's lifestyle, the benefits tend to keep building.

### **How much time should pass between sessions?**

Typically, it has been found that 1-2 days between sessions is enough to allow the body to assimilate. Owners of EESystems like to sleep in their units whenever they can.

### **Can I get too much exposure to the EESystem?**

No. EESystem is safe. Only healthy fields are created.

### **If I am experiencing detoxification symptoms, should I wait to have follow-up sessions?**

No. Detoxification is a natural process. Return to the EESystem and assist your body in moving out the toxins. Remember to drink plenty of pure water and take detox baths with Hawaiian or other salt.

**“My patients were sleeping better, had better skin and felt more energized. They felt like life was wonderful and not only that, they began to make changes in their lives. They had better relations with the people around them and better health.”**

**- Dr. Victor A. Marcial-Vega, MD**

The **Science** behind EESystem

Dozens of Clinical Studies have shown that the EESystem affects energy fields. Review the research for yourself.

#### **Clinical Studies**

» [Biological Interactions with Scalar Energy Cellular Mechanisms of Action](#)

(Dr. G. Rein, Stanford, CA)

#### **Additional Research**

» [Abstract – AAAAM Conf. 2007GDV](#)

» [Kirlian Lab Photography](#)

» [Electric Company Field Surveys](#)

» [Initial Clinical Study](#)

(Dr. V. Marcial-Vega, FL)

» [Research Results](#)

(Dr. V. Marcial-Vega, Canada)

» [The EES and Improved Psychological Well-Being](#)

(Dr. L. Marconi, HI)

» [Electromagnetic Pollution to Scalar Enhancement](#)

(Dr. S. DeVita, Canada)

» [Pilot Study on the Effects of the Scalar Room](#)

(N. Loeffler, OR)

» [Peer Reviewd P.O.I. and Microscopy Study](#)

(Drs. L. Marconi, A. Soleil)

» [Pilot Study at Vancouver Naturopaathic Clinic](#)

(Dr. Lorne G. Swetlikoff, B.Sc.,

N.D., Canada)

» [Assessment – The EESystem with the Bioelectrography Kirlian](#)

(Dr. S. DeVita, Canada)

[GDV Bioelectrography Results](#)

» [Patient Evaluation Form](#)

» [Patient Questionnaire #1](#)

» [Patient Questionnaire #2](#)

» [Live Blood Microscopy](#)

» [EEG](#)

» [Assessment – The EESystem with the](#)

[Bioelectrography Kirlian](#)

(Dr. S. DeVita, Canada)

[GDV Bioelectrography Results](#)

» [Literature Survery in Spiritual Healing and Holism](#)

(N. Loeffler, OR)

» [Scalar Wave Energy Enhancement & Regeneration; A Field-Matrix Chamber to Actualize Full Spectrum Health](#)

(Dr. L. Botchis PhD, IA)

[Earth Spectrum Health Int'l.](#)

» [The Energy of Life](#)

(Jon Barron Special Report)

» [Letter re: Torsion Fields](#)

(Dr. V. Ussenko, MD, MBA; Ukraine)

[Spinor International](#)

» [Torsion Field Effect and Zero-Point Energy in Electrical Discharge Systems](#)

(Xiong-wei Wen & Xing-liu Jiang, China) [wenxw@tsinghua.edu.cn](mailto:wenxw@tsinghua.edu.cn)  
[jiangxl@buaa.edu.cn](mailto:jiangxl@buaa.edu.cn)

» [Integrable and Nonintegrable Structures in Shipov's Physical Vacuum](#)

(R.M. Kiehn, Univ. of Houston)

[Cartan's Corner](#)

[rkiehn2352@aol.com](mailto:rkiehn2352@aol.com)

» [A New Paradigm Theorizing the Mechanism of Bioenergy Healing](#)

(M. Sue Benford, R.N., M.A.)

[Journal of Theoretics](#)

# Energy Enhancement System

<http://www.eesystem.com/>

<b>United States, Canada, Mexico South America</b>	<b>United Kingdom Europe, Thailand</b>
<p><b>Mailing Address:</b> Energy Enhancement System 4224 Waialae Avenue #636 Honolulu, HI 96816 USA</p> <p><b>Telephone:</b> US 1-808-739-8260</p> <p><b>Fax:</b> US 1-808-739-8259</p> <p><b>Email:</b> <a href="mailto:info@eesystem.com">info@eesystem.com</a></p>	<p><b>Mailing Address:</b> Clive Greenslade Sante 14 Trinity Street Colchester Essex CO6 2RJ United Kingdom</p> <p><b>Telephone:</b> 0044(0)1206 548080</p> <p><b>Home Tel:</b> 0044(0)1787 224748</p> <p><b>Cell:</b> 0044(0)797 1019173</p> <p><b>Email:</b> <a href="mailto:clivegreenslade@fsmail.net">clivegreenslade@fsmail.net</a></p>

**PASCAS  
HEALTH**



**Feeling  
Healing with  
Divine Love is  
the key!**



**Validation of EES Technology Observable by Kirlian testing done in a Million Dollar Controlled Environment Lab**

Visualize these pictures as being representations of your cells before and after



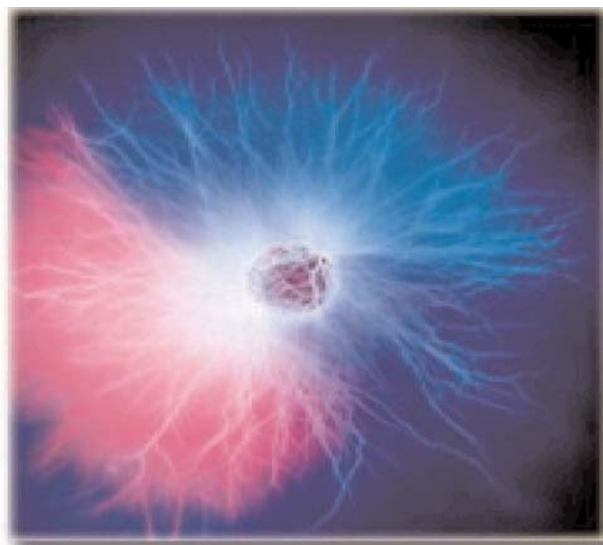
**Before**



**After EES exposure**



**Before**



**After EES exposure**

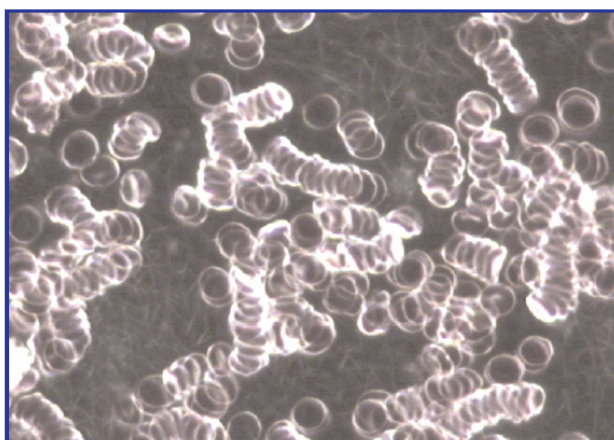
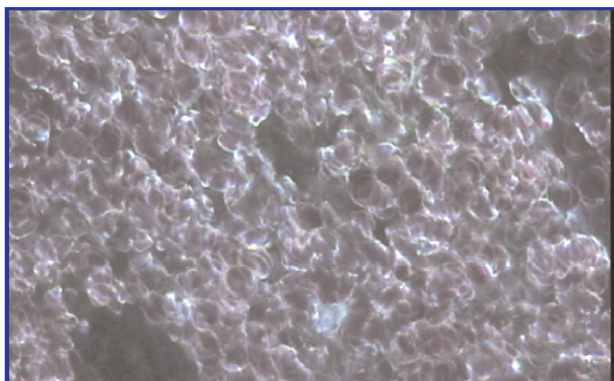
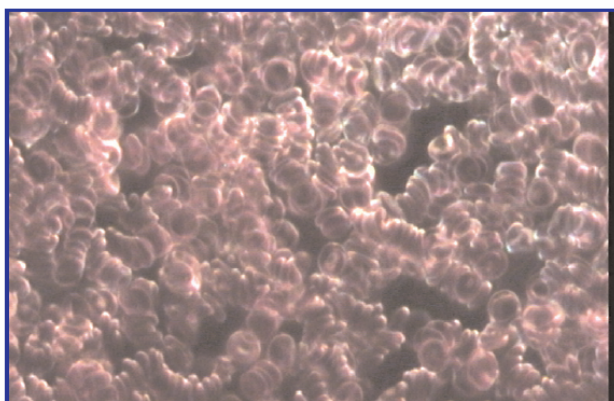


### **Blood Cell Research in the Energy Enhancement System**

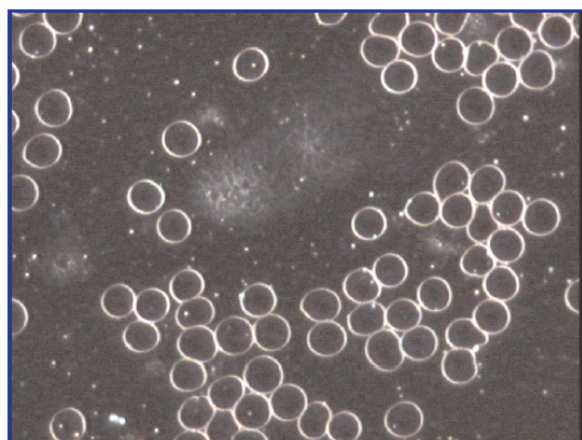
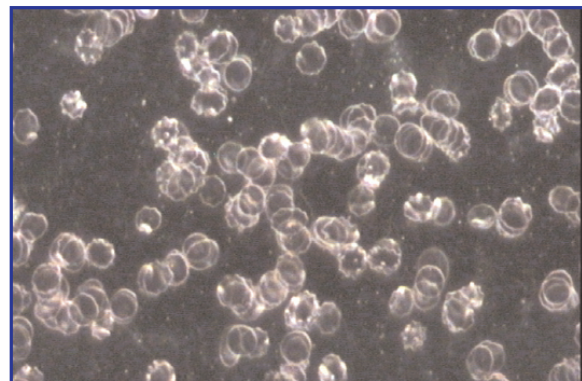
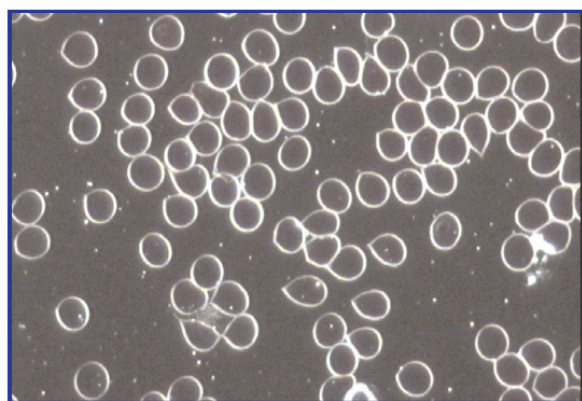
In November 2004, we funded a four week research project looking at the effects of the EES on live blood cells. 36 men and women in Hawaii participated. Dr. Alvita Soleil, Doctor of Oriental Medicine and Director of Kohala Health and Wellness Center, spearheaded the blood and urine analysis.

**Just looking at these photos, regardless of your knowledge of blood, you can see that something miraculous is occurring!**

**Blood Before**



**Blood After 1 hour in EES**



## Scalar EM Technology by a Medical Physician

EE System Medical Director Gregory Gerber

Three separate Live Interviews with this Physician, the last two conducted by other Doctors asking all the relevant questions.



<http://www.youtube.com/watch?v=P6xRBDGowws>

<http://tshintanimd.byoaudio.com/files/media/6a80f585-56cd-2c79-1041-cddf8433c52a.mp3>

<http://ds1.downloadtech.net/cn1086/audio/1850583471238-001.mp3>

## **SCALAR WAVE ENERGY ENHANCEMENT & REGENERATION**

### **A Field–Matrix Chamber to Actualize Full Spectrum Health**

**Diamond Body Technologies**

**Copyright By Lilli Botchis Ph.D. 641-472-0129**

[www.earthspectrum.com](http://www.earthspectrum.com)

Scalar waves have always existed. They are well known in astrophysics, geology, and hydrodynamics. A Scalar wave is known as a fifth dimensional non-linear wave. Third dimensional laws of nature do not bind it. Scalar waves exist out of relative time and space, thus they do not decay over time or distance from their source. Thus scalar waves function in a self-referral and self-generating manner. They are unbounded and capable of passing through solid matter. Quantum mechanical analysis of biological processes has revealed that biological systems are of a non-linear nature. When the human body enters a scalar wave field, the electromagnetic field of the individual becomes excited. This catalyzes the mind / body complex to return to a more optimal state that is representative of its original, natural, electrical matrix form.

Every cell in the human body when functioning at its maximum health potential ranges between 70-90 millivolts. Dis-ease and aging occurs when the cellular energy depreciates to levels below this range. The human body has crystalline structures in every cell wall that are capable of holding a charge. Scalar waves are self-contained three-dimensional waves that spin on a fixed axis. Non-linear waves propagate throughout the body via the crystalline lattices of the elaborate collagen network. The shape of scalar waves is reminiscent of the multiple helical structure of DNA as it folds in on itself. Quantum Mechanical models describe subatomic particles that can store and carry biological information along helical macromolecules like DNA. This indicates that scalar energy is capable of imprinting itself in the DNA.

This presents a paradigm shift towards a new nonlinear regulatory network in the body with properties best described by quantum physics.

The Energy Enhancement Systems a Scalar Technology produces zero point energy that is clinically proven to boost human cell regeneration, immune functions and neurotransmitter functions. Research conducted at the Max Planck Institute of Germany indicates that microorganisms exposed to scalar fields have increased activity of the RAD-6 gene, which codes for proteins involved in DNA repair. Scalar waves facilitate a bi-directional communication between the nervous and immune system as well as increase whole brain hemispheric functioning.

### **Scalar Energy Enhancement – Quantum Health Benefits**

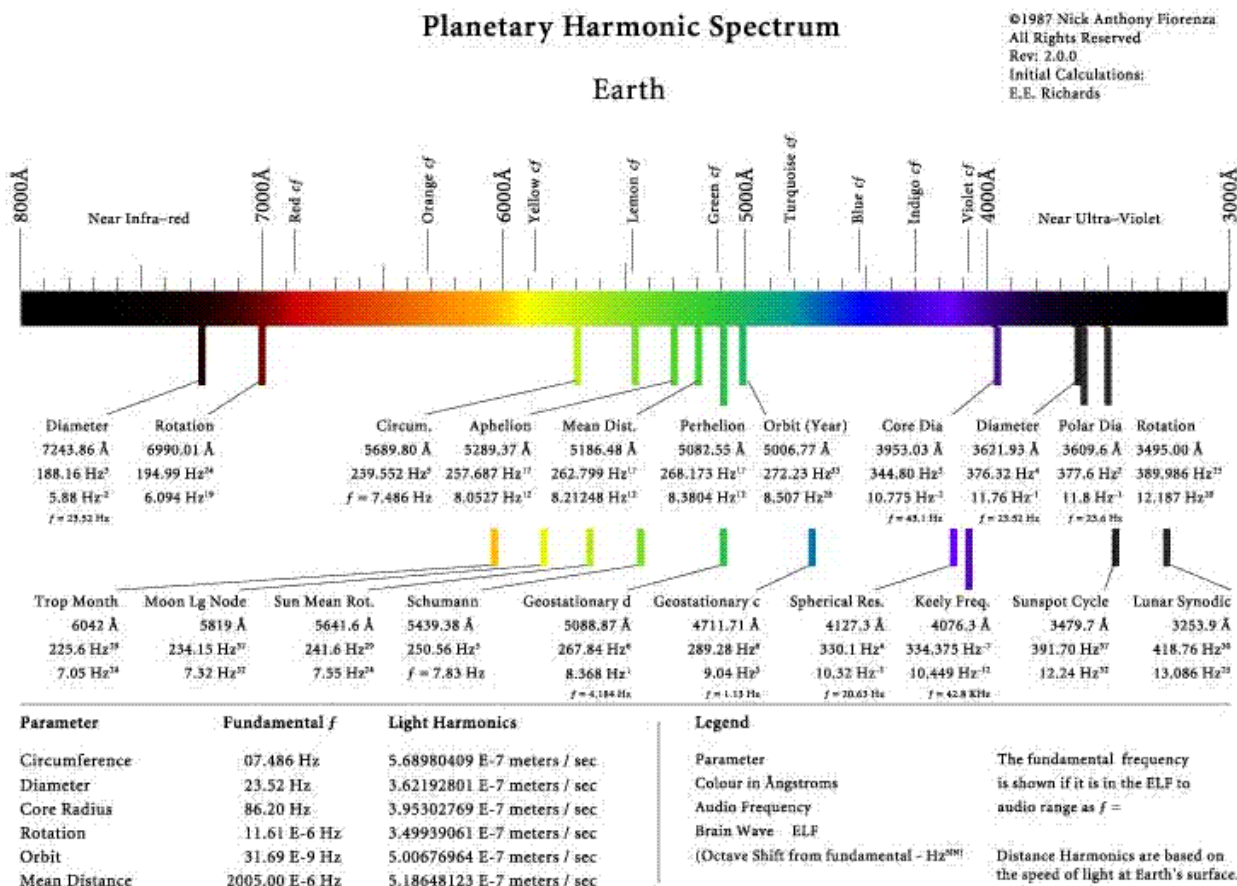
- Eliminate and nullify effects of negative man made frequencies in the body.
- Increase covalent level of hydrogen atoms that hold DNA together.
- Optimizing cellular energy levels to 70-90 millivolts.
- Improve cell wall permeability maximizing nutrient uptake and cellular detoxification.
- Improves immune function 149% proven lab studies.
- Increased amplitude of EEG frequencies = mental focus.
- Balances two hemispheres of the brain = super learning.
- Inhibits uptake of noradrenaline by PC12 nerve cells works as an antidepressant.

- Stimulates the regenerative processes and DNA repair.
- Anti-aging due to unbounded relative time / space biological functioning.
- Entrain the physiology to gain self-referral regenerative healing functions.
- Increase creative intelligence and coherence physically, mentally, emotionally, spiritually, and psychically.
- Catalyse heightened states of awareness and creativity.
- Effects are cumulative.
- Potential is unlimited due to the innate nature of this technology.

Scalar waves have the potential for increasing life force energy and reversing aging. They establish and strengthen the connection between the human energy fields and the universal energy (or God Presence) that is limitless, without time and space. Scalar bio-energy is a carrier wave for divine intelligence to manifest your deepest souls desires health, happiness, life purpose, creative-abilities, financial and spiritual wealth.

“A True course in Self-Mastery is taught by the Self”

Contact- Lilli Botchis, Ph. D., 641-472-0129, stargate@lisco.com



## **Energy Enhancement System™**

All observations made at Health Horizons Wellness Center

[www.healthhorizons-inc.com](http://www.healthhorizons-inc.com)

By Dr. Victor A. Marcial-Vega

December 11, 2001

This Energy Enhancement System was installed and turned on at our centre on May 19, 2001 at 7:52 PM Eastern Standard Time. It is in a room that is squared, has two windows that are covered by thin paper. It consists of four computers: each one aligned on each side of a square, with two pairs of computer monitors and drives facing each other. There is a geometric gold plated metallic orb on the centre of the room hanging from the lamp fixture. It is claimed that it amplifies the signals coming from the device. There is another gold plated metallic orb hanging from the southwest corner of the room. It is claimed that this captures negativity (positive ions) and it is connected with a wire to a standard copper ground rod (embedded 7 feet into the ground). The computers and monitors are all connected to surge protectors. The ground receptacle of the surge protectors is connected with the orb that captures residual negative energy by a copper wire. Therefore, providing further grounding to the system.

The system runs constantly unless there is a power blackout in the neighbourhood. On 5-21-01 a 19 years old patient turned all the monitors off because they were bothering him while he was sitting in the room having a treatment session. On two occasions, the monitor on the East Side of the room has been found to be either turned off or turned on but with a blank screen. On two occasions, each of the south and north monitors were found to have the "Metamatrix" logo on a dark background and this resolved after pressing the "enter" key once.

The computers are running images that look like encrypted messages or hieroglyphics. These images are coloured in diverse ways. These scroll indefinitely up and down the screen. Different programs and colours are chosen depending on the desired effect.

Three reclining chairs are located in between the computers, which are standing on pedestals. A typical session consists of a person sitting in this room for ½ hour with their eyes closed and relaxing as deeply as they can.

The technology was developed by Sandra Michael, a healer from Colorado, and installed by her husband Craig Cooks. I became very interested for two reasons:

1- These two individuals are extremely healthy and young looking as compared to the general population of people in their early fifties. Craig is 54 and has the smooth face of a 30-year-old. His hair is all dark and his eyes are very penetrating. Sandra I can only guess is about 50. They have a lot of energy and very healthy complexions and body aromas.

2- Photographic Kirlian analysis were done of nutritional supplements before and after being exposed to the chamber. Kirlian photography is a well-known method of measuring the electromagnetic energy field of an object. Dead tissue has a low (or dim) pattern whereas live foods have a very bright one. This is a measure of the energy of an object. Disease means a lower energy picture by Kirlian photographic methods. (That is why chronically sick people's body temperature steadily drops). There was a consistent increase in energy of all supplements exposed inside the chamber.

I borrowed this technology to research the effect of this chamber on people. Below are several observations.

## **ELECTROMAGNETICS**

An electrician came to evaluate the electromagnetic frequencies of the system and the rest of the office. This was done to ensure the safety of the set-up. He used a hand held device that can measure the frequency of electromagnetic fields produced by electrical devices in hertz (cycles per second). A typical wire or electrical device in the United States yields a frequency of 60 hertz. There is evidence that prolonged exposure to frequencies of 60 hertz can be detrimental to humans. We could not detect any frequency around the wires outside the chamber in the rest of the office.

At first we thought the hand held device was broken. He then went to another location in the block and it was detecting fields. He returned to our clinic an hour later and again could not detect them. I compared this to the wires at my home and could detect higher frequencies than at the office. Frequencies typical of electrical devices of 60 Hz were found inches away from a computer monitor; a TV screen and a GFI (ground fault interrupt) on a steambath at the clinic. None were found around wires. Some frequencies were found around the surge protectors for the office fax, computer and mail equipment. This was less than that found in my house's computer surge protector (0-60 Hz at the office, 60-300 at home). We measured the frequencies around the computer monitors inside of the Energy Enhancement System room and found several unusual findings as well.

We would detect 60 HZ in front of the monitors. The first week, we would detect 60 Hz in the centre of the room and the following week it fluctuated between 0 and 60 indicating that the chamber was having an effect on the electromagnetic fields that are considered detrimental to health. During the first week, two of the chairs (northeast, southwest) and the door entrance area (southeast) had no detectable frequencies. The northwest chair, however, had 60hz detected around it. By the second week, all the chair positions were on the 0 position.

These findings are strongly suggestive of:

- 1- The chamber is changing the electromagnetic environment in the room and the clinic surrounding it. Its presence seems to be attempting to remove all detrimental electromagnetic frequencies.
- 2- It is not producing any unusual detrimental electromagnetic frequencies.

## **ELECTRICITY**

For 3 weeks in a row, and once a week, my house blew 3 light bulbs. The week of 6-28, there was a power outage in my home as well as the rest of the block. As I looked closer, I saw that the electricity was not off, but rather the power was so low that it could only run the alarm clock in my bedroom and the pool pump at very low speed. A fuse had blown across from my house (there was no thunder at the time). Three days later, a fuse from the outside box at my clinic blew off. This happened on the opposite side of the building where the chamber is located.

## **WATER PURIFICATION**

We have a reverse osmosis water purification system that has been running for 2 years. It has a sludge-draining faucet, which drains the residual filtered contaminants in the water. This is drained manually and daily and I personally check it almost everyday to ensure its efficient operation. This has always been a dark tea coloured sludge often with particulate matter. In the past 8 days, the sludge has been clearing to the point that it looked almost totally clear today. I measured the TDS (total dissolved solids) with an electronic digital device in the water. I wanted to make sure the system was working right. The following are the before the chamber's installation and after findings:

	TDS Sludge	TDS Drinkable Water	TDS City Water	
WATER BEFORE	480	0-1	130-155	(Brown)
WATER AFTER	280	0-1	135	(Clear)

On the week of 6-18, the water purifier stopped producing water. It was found that the heating element was loaded with mineral deposits and had clogged up the system. This may be the reason why the sludge was cleaner than usual: precipitation of the minerals inside the system. The water purifier has been replaced and the sludge is still clearer than before the chamber was installed.

## **PLANTS**

One plant has had multiple punctuate fungal infections on its leaves for 1-2 years. It has almost cleared. The plants outside the chamber's walls are growing faster and thicker than the rest of the perimeter of the Building

## **SOAP**

The liquid soap's structure has changed. It is a smooth slippery consistency with very little bubble formation. I was cleaning my hands and it felt like I was washing with hand lotion or hair conditioner instead of soap. I thought my staff had made a mistake but they reminded me that our clinic has no lotions!

## **HIGH RESOLUTION BLOOD IMAGING**

I have done blood tests after being in the chamber for ½-1 hour and compared it with previous samples. My own blood has changed. I always had a high level of chylomicrons and triglycerides. These would look like tiny droplets floating about the blood. This is considered an abnormal finding. I have tried many things with no success. Since my daily exposure to the chamber, my blood looks like it has not in 2 years: 80% cleared of these droplets.

Three other patient's bloods have been evaluated after being in the chamber 30-60 minutes. Two had a marked improvement in the wetsmear, and ueterminate on the dry smear. One of these was a woman that has a metastatic lung cancer with widespread disease. I would have expected a very severe fibrin pattern, which is dark spots of small coagulations throughout the background fluid of the blood where the cells are floating (plasma or serum). This patient had almost none and I have never seen this situation occur with the hundreds of bloods I have done in patients with advanced cancer.

Another of these three patients came to my office crying after ½ hour in the chamber. She said she was feeling pure joy. Her blood was 90% improved from her previous sample.

Four more patients have had blood taken before and immediately after ½ hour in the chamber. The blood afterwards flows better and shows more debris and waste material than before. This may explain the feeling of well-being and detox symptoms (headaches, sore throat, achiness) respectively after a session.

## **DETOXIFICATION**

This is one of the most marked and consistent effects observed by me from a physical perspective.

Three days after the chamber's installation, my whole staff and myself developed detoxification symptoms. These are different from actually getting worse from a condition in that after the detoxification, and sometimes during it, other symptoms are or will be getting better than before the detoxification. One of my patients developed a urinary tract infection that needed no antibiotics and got better after a few days. Her daughter also got a urinary inflammation the following week without being in our clinic. Another employee and myself developed severe abdominal pain. Her rosacea like rash started clearing from her face since then. My pain was so severe I was considering cancelling my appointments and going to the emergency room. I then applied peppermint oil to my belly, known to soothe gastrointestinal symptoms, and it cleared. It has not recurred again. I then developed a sore throat 5 days after the installation that cleared by the next day. I also developed a generalized achiness since the day after the installation that has almost cleared by now. This has been followed by an increase on my energy level, mental clarity and focus and intelligence.

Several patients have developed headaches and sore throats that have resolved hours to days after the sessions. They have kept returning because they have felt better in other respects.

## **EFFICACY**

There is one program (Pele's Fire) for energy and doing work that has assisted me in doing my work faster. On one occasion I took all the paperwork in my briefcase and what had taken me weeks, took me one hour to clear.

It felt like the blocks that kept me from doing my work were lifted and I was working with the paperwork in a playful and fun way, therefore increasing my productivity. Most striking was the way I dealt with my finances recently. I have had my clinic for 4 years and never got into my finances 100%. Then, my staff was confused as to the balance and reconciliation of our bank account and could not tell me what was going on. They were confused (our previous office manager left one month ago). I got into our account, did all the check's and deposit's reconciliation, got all the bills, paid them, kept others pending and everything done in one hour! I felt like my IQ had increased 30 points by the ease with which I completed the task. A plus was that I was having fun with it also. It did not feel like work.



## TIME

Most patients feel they were in the chamber much shorter than the actual time.

I have synchronized my beeper, which is at the chamber 8 hours a day with my digital alarm clock at home. The beeper is moving slower than the alarm clock by a few seconds.

Last week I was in the chamber with three friends and I was awake all the time observing them. I thought we were there for 40 minutes and I told them we were in one and a half hours because I knew I was probably underestimating the time. In reality, we were there exactly 3 hours.

## PATIENTS

A total of 107 people have experienced the chamber at our centre.

Most have experienced it once (1/2-1 hour), 5 patients have had 3-4 treatments. Age range 7-81 years old. The following are the reported effects:

More energy	- 8 patients
Deep relaxation	- 59 patients
Disappearance of grief from loss of a son	-1
Clearing of Panic attack	-2
Sleeping during session	-13
Decreased chronic thyroid inflammation	-1
Disappearance of pain	- 6 (3 had cancer pain)
Most stillness they have felt	-1
Softening of hard tissue	-1
Sense of floating	-9
Seeing lights	-2
Period returned	-1
Varicose veins got better	-1
Out of body experiences	-9
Clearing of sinuses	-1
Visions, Colours	-7
Hearing voices, sounds	-8
Feeling of intense joy	-17
Hearing rainforest sounds	-1
Hearing intergalactic sounds	-1
Increase in IQ	-1
Decreased abdominal distention	-2
Manifestation of prayers	-11
Increased Libido, Spontaneous erections	-2
Removal of negative blocks	-1
Enhancement of herbal products	-1
Insomnia from increased energy	-4
Heart beating faster	-1

Clarity of thought	-1
Seeing people inside chamber	-5
No changes noted	-4
Stitches coming out of old scars	-3
Disappearance of breast capsules around implants	-2
Heavy hands	-1
Tingling, feeling energy moving inside their bodies	-17
Warm feeling	-15
Worse sinus problem	-1
Symmetrical balancing of facial features	-2
Lowering blood sugar in 3 diabetics. One has decreased his insulin requirements after one ½ hour session.	
Reopening of clauraudience	
All the symptoms below resolved and are associated with detoxing. Patients then felt better than before:	
Depression	-1
Deep sleep	-10
Headaches	-9
Abdominal bloating	-5
Sore throat	-4
Fever	-1
Chest tightness	-4

I have observed that patients that are on insulin or hypoglycemic agents have a drop in their blood sugar as a result of being in the chamber. This indicates that the tissues are going back to functioning in a more healthy fashion. I now routinely follow their daily blood sugar and start decreasing their medication doses. This decrease in the need for medication is good sign of improvement of health. I now recommend that all patients taking medication be evaluated by a physician during their chamber experience.

I have observed that regardless of their experience, 75% of individuals come out of the chamber with more focused and intense gaze and improved skin colour.

## **FUTURE PLANS**

- 1- Phase 2 efficacy study using HRBI (high resolution blood imaging) both before and after being in the chamber.
- 2- Atomic clock in the chamber and in my house and comparing their differences daily. This would confirm that being in the chamber is equivalent to moving faster than when we are standing on the planet.
- 3- Thermal Imaging before and after being in the chamber.
- 4- Follow-up of patients with metastatic cancer that are considered terminal.
- 5- Follow-up of patients with AIDS or other viruses.

## TESTIMONIALS

1- My spine felt like there was a light knocking throughout the session. I felt a squeezing of my arms and a stroking of my face. My imagination increased as well as my understanding. I felt a pressure on the throat. I had a headache that resolved in the morning and I feel at peace.

2- I felt a deep relaxation that stayed with me for 5 days. I felt energy being released from my body that was hindering my well being.

3- I felt an increase on the blood flow in my hands. I felt energy moving in my ears and a different mouth taste.

4- I have been meditating for 30 years and I have never felt such deep state of relaxation and meditation.

5- One patient had been kidnapped and raped by a group of men over a 7-day period. Her testimony is available only by request and, with her permission, I am reporting on her case. For months, she has been bleeding vaginally, with breast masses and abdominal distention of unknown etiology. Medical evaluations have revealed no causes. After one session, all these symptoms disappeared and her personality turned into joy. The closest I can come up to describe her and her family's account of the process she went through is that the chamber elicited a successful exorcism.

6- I forgot I had my back pain and forgot my magnetic belt in the office. I felt very much at peace and felt a tingling sensation on the hips and feet. I have not taken Vicodin (a narcotic) for my osteoporosis pain for 5 days. This has not happened in many years. A stitch came out of a scar I had years ago.

7- I had bilateral breast implants and they require compression of hard capsules that tend to form around the implants every few months to years. I had capsules on both sides that would have eventually required compression to release them and prevent scar formation. They disappeared after two sessions in the chamber.

8- I saw a deep green colour in the whole room. I felt buzzing waves of energy and my stomach pain was gone.

9- I have not felt negative or depressed up to 10 days after being in the chamber.

10- I saw the hand of God

11- My insulin requirements went down from 28 units in the morning and 18 at night to 18 in the morning and 12 at night.

## CONCLUSION

It is my opinion that this is a powerful energy enhancer. It promotes a very deep state of ultimate relaxation, if we allow it, from which any type of healing can occur.

To contact Dr. Victor A. Marcial-Vega:

Ph: (305) 442-1233 Fax: (305) 442-2011

Yardley Place 18, San Juan, Puerto Rico 00911

Ph: (787) 598-0384 Email: vmarcialve@aol.com

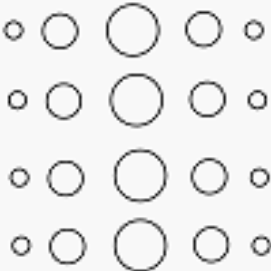
For more information on the Energy Enhancement System:

HI: (808) 884-5644 CA: (760) 369-9636

[www.EnergyEnhancementSystem.com](http://www.EnergyEnhancementSystem.com)

Scalars are measurements consisting of a single value.

In a scalar field, each point has one number describing it.

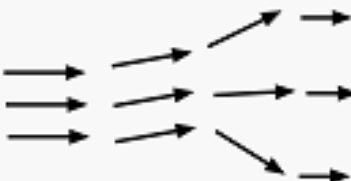


For instance, the temperature distribution inside a room is a scalar field. Each point in space has one temperature associated with it.

(size of circle denotes strength of field at that point)

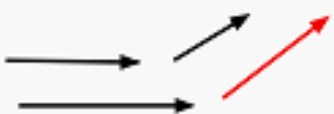
Vectors are measurements consisting of multiple values.

In a vector field, each point requires several numbers to fully describe.



Example: in flowing water, each location of the water has a particular flow velocity and direction. Directions require up to three measurements per point to fully describe.


Electric and magnetic fields are vector fields. The vector at any point indicates the strength and direction of the field.




Example: Electric field at red arrow is  $2 \text{ V/m}$  in  $x$  direction +  $2 \text{ V/m}$  in  $y$  direction

The entire field can be described in a single equation that tells you what the vector is for any point.

Here is a voltage field that varies over distance. It is a scalar field.



An electric field is the negative gradient of a voltage field. It shows the direction in which the voltage decreases and how strongly it does so. It is measured in volts per meter. The electric field (vector) and its voltage field (scalar) are physically equivalent.

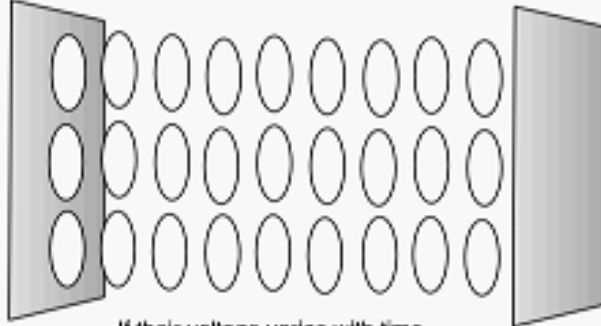


But sometimes a voltage field does not vary over distance. So the electric field there is zero. Yet, the voltage field can still oscillate with time. This is an example of a true scalar field, something that has neither electric nor magnetic components, yet is definitely a field.



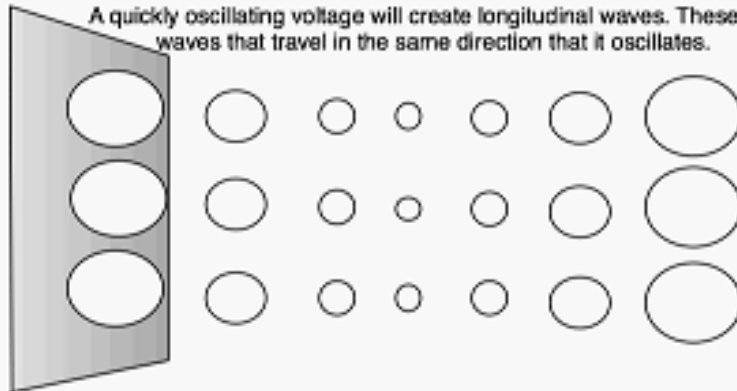
This is a **temporal scalar wave**.

A uniform voltage field can be created between two large conductors:

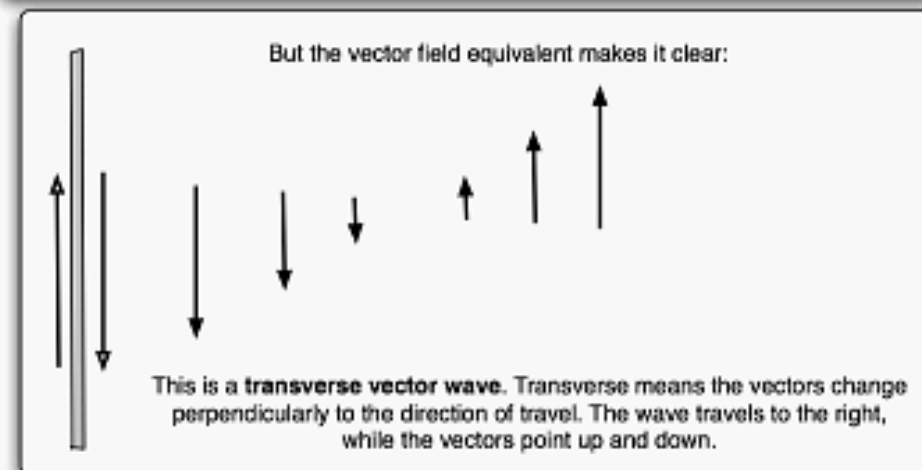
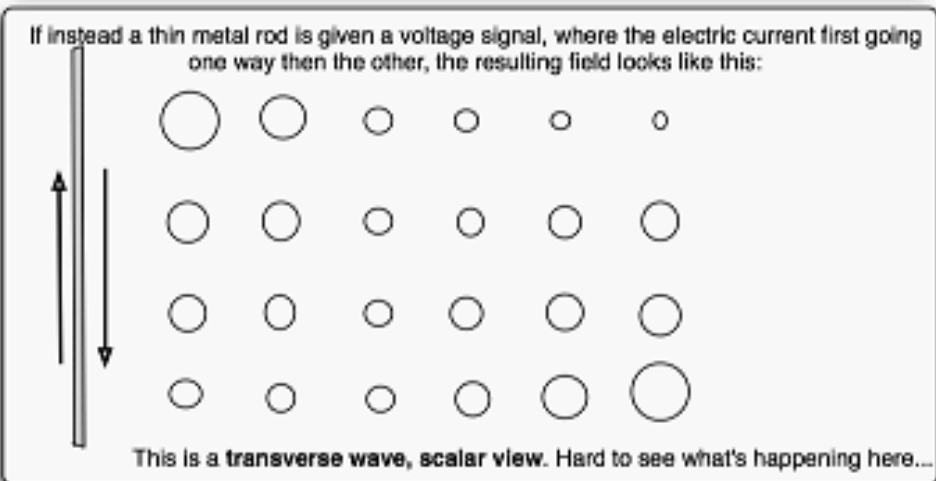
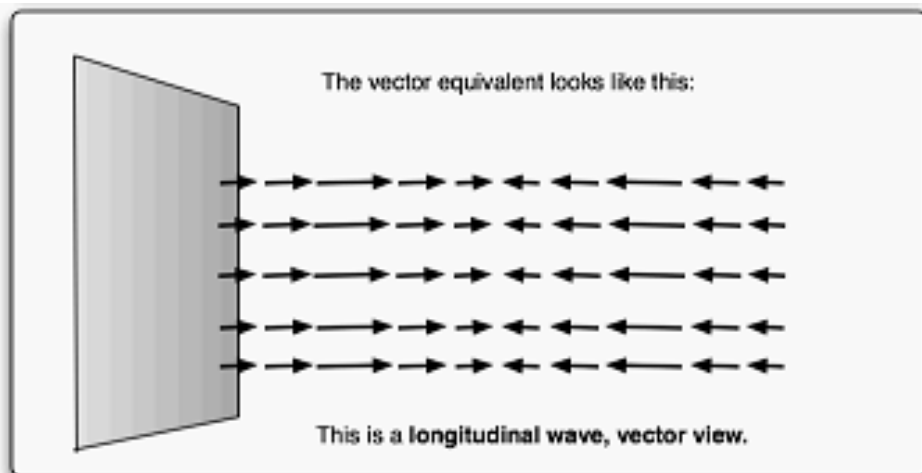


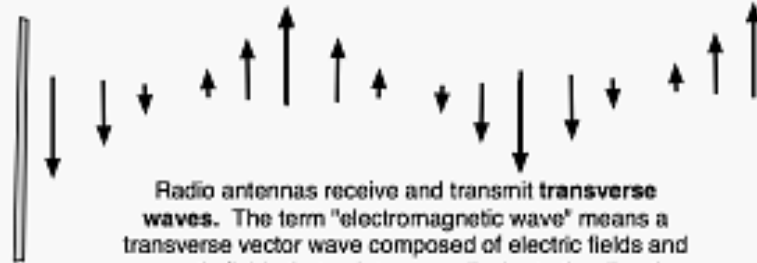
If their voltage varies with time, this would be one way to produce a **temporal scalar wave**.

A quickly oscillating voltage will create longitudinal waves. These are waves that travel in the same direction that it oscillates.



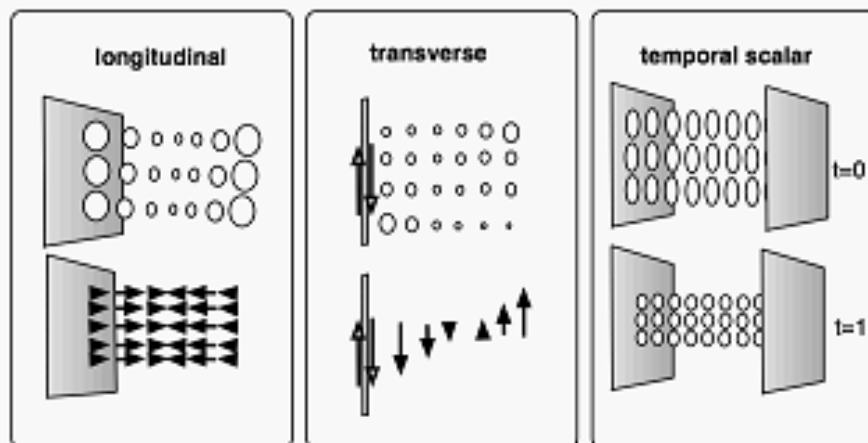
This is a **longitudinal wave, scalar view**.





Radio antennas receive and transmit **transverse waves**. The term "electromagnetic wave" means a transverse vector wave composed of electric fields and magnetic fields that point perpendicular to the direction of travel. **Transverse waves** are "ordinary" EM waves.

So there are three types of waves:



Of these three, only **transverse waves** are recognized by mainstream science.

Scalar physics deals with **longitudinal** and **temporal scalar waves**.

Instead of magnetic or electric fields, scalar physics deals with these:

- scalar potential fields** (uniform but time-varying voltage fields)
- vector potential fields** (curl-free magnetic vector potential fields)
- scalar superpotential fields** (uniform but time varying magnetic flux fields)

By manipulating these, scalar physics allows manipulation of time and gravity, the opening of portals into other dimensions, modulation of human emotional frequency, subspace communication, and numerous other amazing things. The secret government possesses a highly advanced version of scalar physics but goes to great lengths to keep it out of our hands.

# Energy Enhancement System™

## Scalar Field Technology

by Dr. Victor Marcial-Vega, M.D., at the Bradgate Arms, Toronto

[www.EnergyEnhancementSystem.com](http://www.EnergyEnhancementSystem.com) (HI) 808-884-5644 (CA) 760-369-9636

*Dr. Victor Marcial-Vega, recognized as being in the top one percent of medical doctors in the U.S., trained at Johns Hopkins University, and was formerly staff radiation oncologist at both the University of Miami and Washington University Schools of Medicine. Dr. Marcial-Vega has done research at the National Institutes of Health (NIH) and the National Cancer Institute (NCI). He has testified before US Congress and presented this technology to numerous medical and professional organizations nationally and internationally including the Radiation Oncology Committee meeting, the American Academy of Anti-Aging Medicine and neurological, nutritional and integrative medicine conferences. He has spearheaded clinical studies and research into the HHFe technology.*

### THE HEALING CHAMBER

Sandra Rose-Michael developed the HHFe technology. She is a world renowned Hawaiian Kahuna who has worked in Hawaii for 20 years. She does energy healing. She touches you very lightly but it has a dramatic effect. She hits the areas which have negative blockages, and the blockages are released while she is doing her work. She wanted to emulate the type of energy increase and energy release that she produced in her healing sessions without having to be physically present. Over the past 10 years, she has been doing research with a computer programmer with a system of computers, and this resulted in the HHFe healing chamber which has four computers running programs that create *scalar waves*.

### SCALAR WAVE TECHNOLOGY

The HHFe healing chamber is based on *scalar wave* technology. Electromagnetic waves are linear – the more energy you put in, the more waves you produce, and the more impact it will make in a biological model. A scalar wave is *non-linear*, not electromagnetic, and exists in five dimensional space / time, a dimension where there is no time or space. That means they do not decay with time or distance from their source. The scalar waves are associated with electromagnetism but since they are non-linear, they cannot be measured with a linear device.

They must be measured indirectly.

Scalar waves were documented by Nikola Tesla many years ago (later research demonstrated that scalar waves from Teslar watches increase the production of lymphocytes). Albert Einstein discovered the practical application of the scalar wave. Einstein proposed the theory and proved mathematically that time and space are relative. They are absolute only in this dimension we are living in, paying taxes, working from nine to five, all that is limited reality. But he also knew that there is another reality which has no time and no space and that it is real. We know that the clocks in rocket ships run at a different rate than those on planet Earth because the speed changes time. Einstein said that if we travelled at the speed of light for 30 years, when we returned we would be the same age



as when we left. This has been proven mathematically, although we still have no technology that can actually stop time and space. If we have a technology that can produce a timeless reality, we can reverse disease and prevent aging. The computer programs run the formulas that Einstein developed, but remember the chamber is not 100% scalar. We are still not at the optimum level by any means, because otherwise everybody would be totally healed when they go into the chamber and this is not the case yet. Scalar waves have a potential for increasing energy and reversing aging. They increase the connection between that universal energy (or God) which is limitless, without time and space, and your awareness of it, to use it in order to manifest whatever you want to manifest, whether it's health, wealth, happiness or whatever.

### **NEUTRALIZATION OF HARMFUL ELECTROMAGNETIC FIELDS AROUND US**

I checked with an electrician because I wanted to make sure this chamber was safe. Four computers pointing to the centre where someone is sitting could bombard one with radiation which we know is present in computers, emissions like 200 to 500 Hertz, or any higher frequency than 60 Hertz. We know that it is harmful to your health. He measured the wires, but could not find any electricity along the wires, which is very unusual. So he measured the wires outside the treatment room and again found zero in all the wires. He found the usual 60 Hertz only in front of the TV and in front of the computers running the programs; otherwise he couldn't find it anywhere in the office. The next week I measured the office wires again. I measured zero, then 20, then 10 minutes later it would be 15. Right now it is fluctuating between 0 and 30 Hertz. It was a very unstable field but it was less than normal. Somehow the program was neutralizing what we know as detrimental electromagnetic waves around these electrical fields.

### **INTENTION**

Your intent is very important in anything that you do. We ask everyone to make an intent when they are in the chamber. We see that the answers to prayers are manifesting very rapidly and very consciously. Many of us pray or ask God for assistance or ask the Energy of the Universe to send you something, but not many are listening to that energy talking back to us. The most limiting factor in the healing process has been the lack of listening and getting the message of exactly what we need to do at all times. The universe is always telling us exactly what we need to do, but we are not always listening because we are so distracted by all the stuff around us. In the instructions all I say is "Close your eyes, go as deep as you can and listen".

### **PSYCHOLOGICAL AND SPIRITUAL RESULTS OF THE TREATMENT**

This is only a preliminary report. I saw 105 patients in my clinic. We put each of them into the chamber for a half-hour. We didn't include supplements or dietary advice in the study. They didn't do the ozone chamber or chelation or anything else. My patients reported that they had stress reduction, easier meditation, increased learning capacity, better sleep and increased intelligence. A third of the people had visions. Some people reported a complete healing of chronic conditions after being in the chamber only half an hour. About 85% to 90% of people experience a deep sense of love, relaxation and out-of-body experiences, expanded awareness experiences, tingling sensations, increased libido, removal of negative blocks, clarity of thought and improvement of energy. My patients were coming out of the chamber feeling very happy. Some were crying because they were so happy. Fifteen

percent of patients cancelled follow-up treatments because they said they didn't need any more; they were healed.

## **IMPROVED HEALTH CONDITIONS**

A number of conditions have responded very quickly to the healing chamber:

**DIABETES** Every diabetic will have a drop in their blood sugar immediately, so they have to be tested and start tapering down their insulin or oral medicine immediately after one session in the chamber.

**VISION** I noticed that the healing chamber would improve vision and it started improving my vision so much that my contact lens prescription has gone down. A doctor friend of mine had bilateral retinal detachments and he went blind. He had cataracts in both eyes and he had the regular look of someone who is blind, one eye one way, and the other one in the opposite direction – white. When I shined a light in the eye, there was no papillary reflex, which meant that no light was reaching the optic nerve. No connection between the eye and the brain, really a bad case and permanent. He went into the chamber and immediately after two hours, he could see light and then after a few more sessions he could see shapes. Then I started giving him an eyedrop preparation with herbs and aromatherapy, and he started recovering. Three months later he saw my face for the first time, and to make a long story short, he's driving a car right now.

**KIDNEY STONES** People who went in with kidney stones passed the stones painlessly right after being in the chamber. So it helps pass the stones.

**CHRONIC PERMANENT INJURIES** People with chronic permanent injuries, nerve damage, muscle damage, bone damage, cartilage damage in different parts of the body due to accidents, were able to start moving normally. And that is very unusual because I haven't seen this improvement with any alternative medicine or conventional medicine procedures. Three of my patients expelled stitches from old scars from surgeries 20 to 40 years ago. This is very unusual. But the chamber creates a beneficial electromagnetic frequency and that gives the cells more electricity and more energy to expel anything they want to get rid of.

**CHRONIC DISORDERS** I noticed that people who had chronic disorders like *osteoporosis* benefited more than acute problems like colds or flu.

**PAIN CONTROL** The more chronic the pain, the better the chance of improvement. All my patients who were in pain experienced control of their pain right after the treatment. Pain control has a 100% result so far. It is useful for pain control of all kinds including pain that requires narcotic medication.

**PARKINSON'S AND TREMOURS** One of my patients with *Parkinson's* went into the chamber and has stopped shaking. This heals very quickly.

**STROKES** I've seen people with strokes being healed in one session.

**ANXIETY AND DEPRESSION** We have 100% results for people who suffer from *anxiety and depression*. I think depression is due to anxiety, it's all related.

**SINUS PROBLEMS, FIBROMYALGIA, FATIGUE** have improved

**ARTHRITIS** We're finding out that many of these conditions are caused by infections: arthritis, multiple sclerosis, Alzheimer's, stomach ulcers – who would have thought that that was caused by bacteria. Because of imbalance in the body, we are allowing bacteria and viruses to overgrow in the body, resulting in chronic disease. So arthritis is very easy to heal. One of the quickest ways to decrease arthritic pain is with enzymes. Enzymes decrease the pain, and then you start working with the infection with ozone or other things like that. My patients have told me that their arthritis has been relieved very quickly in the chamber.

**CANCER** I have put some cancer patients in the chamber but I have not seen any healing of cancer in the chamber yet. However, half of the patients experienced a *temporary complete absence of pain* for a few days. Perhaps this means that a cancer patient needs to be in the chamber 24 hours a day, or eight hours a day, not just two hours. I always wanted to try that, but because of logistics problems was not able to. But I would recommend that someone with cancer stay in 24 hours a day for seven days and see what happens.

### **RELAXATION AND HEALING AND THE POWER OF LOVE**

There is one common denominator that I have found. The level of tranquillity and peace and love that you feel during the session is the main factor that correlates with these healings. If you can go into a state of deep relaxation for a long enough period, there is nothing that the body cannot heal.

One hundred percent of the people who allowed themselves to reach the point of ultimate deep relaxation from which all healing can occur were seeing visions of many things, or light, or they were hearing things. They were not fidgeting, not looking at the clock, they were not getting up or down or opening the eyes or wondering how long this will take. They were just going with it. I personally have heard rainforests every time I go into the chamber environment. I was just listening to another dimension that I am still in the process of understanding.

### **OPTIMAL LENGTH OF TIME IN THE CHAMBER**

If you have not experienced this yet, I would encourage you to experience the chamber for *two hours* and also alone, preferably, because if you are with someone and you're going deep and they fidget, then they wake you up and you have to get started again. It's a very intimate experience and whatever happens is between you and your maker, God or the Universe, or whatever you want to call it. I noticed that two hours gave the best effects, 100% effect; the effect will vary, but it will be something major. So far 100% of people have had a major life changing experience when they are in the environment for two hours, not a half-hour or an hour. Why is this? During the first half-hour, there is a struggle between the mind and the spirit to listen. Sometimes we don't want to listen. We want to be in charge. ("No I have to be out of here in one hour, I have to pick up the kids, I have to pay this bill, I have to call Mary because she asked me.") All that chattering inside the mind is keeping you from just listening. The secret of this universe is just sitting down to listen. When we take the time to

listen, the energy will come and it is almost like the energy of the universe or God. All that love coming forward can be very uncomfortable. When pure love comes it shakes whatever is inside of us that is not love because it is not compatible. But love is what we are asking for, so it's a paradox and it is like a game until we learn to walk into it.

After an hour almost invariably the struggle is over. The next hour is pure healing and pure communication with other dimensions and other expanded levels of awareness. We only use about five to ten percent of our brains. We have seen that the chamber increases the brain capacity. We have done brain scans before and after someone goes into the chamber. Initially there are areas of the brain that are totally shut-off. There is no electricity going through and we can measure this. After being in the chamber those areas start lighting up.

### **FREQUENCY OF THE TREATMENT**

It could be once a week, three times a week, every day, twice a day, once a month. It depends on the patient.

### **KIRLIAN PHOTOGRAPHY AND ELECTROENCEPHALOGRAMS (EEG)**

Both Kirlian photography and EEGs demonstrate that the chamber increases the energetic blueprint of anything that is put in, whether a human being or a dietary supplement. It seems to be permanent, because when we measure it three months, six months or nine months later, the energy is still there. It's amazing. If you are taking the supplements, you're taking scalar wave reality in you. Kirlian photography measures the aura; it measures energy. We can measure energy waves anywhere from heat waves to electromagnetic waves. We can measure the electrons that are emitted from every living being and every inanimate object, and those electrons can form a pathway that looks like a spark. The more energy we have, the healthier we are. The less energy we have, the more lifeless we are. An inanimate object will have less energy of course than a living organism. Kirlian photography showed that this healing technology permanently increased the energy of the supplements and people that went into the chamber. In other words six months later, the energy was still at an increased level. The chamber makes the cells more energized. Kirlian photographic studies before and after treatment in the chamber show significant changes around the electromagnetic aura.

EEGs demonstrated that the chamber increased the brainwaves related to meditation, relaxation, peace and love; and it also increased the number of locations in the brain where those waves are being produced. I have actual brain wave measurements of patients before and after they go into the chamber, which are very impressive. Electroencephalograms show that after the patient has been in the chamber a half-hour, there is more symmetry between the energy emissions on the right and left sides of the brain.

### **DETOXIFICATION**

I measured the blood composition of my patients by red cell analysis before and after they went into the chamber. I found that every single person showed an increase in the toxins in the blood immediately after treatment, but the blood was more fluid. So somehow the healing chamber was stimulating the tissues to dump the toxins into the blood and the blood became more fluid in order to

get the toxins out of the body. The toxins disappeared after a few days. So the chamber was cleaning the system, because of course disease cannot flourish in a scalar wave environment which has no time and no space. The blood of people who got a headache right after they were in the chamber was full of toxicity: parasites, fungi and viruses which were not there before they went into the chamber.

Detoxification is something we want because it gets rid of the toxins that are in the body. In my case, it was a sore throat, headache and a stomach pain. I see similar detoxification symptoms in everyone: sore throat, headaches and abdominal distension in about 3/4 of my patients. I recommend moving the bowels and plenty of water after the treatment. For people who have toxic blood and headache I would recommend a glass of water and optimally move their bowels two or three times a day before they go in the chamber. Afterwards, just continue drinking water and moving their bowels and detoxifying. You can use a salt bath or eat less red meat, no coffee, more organic fruits and vegetables, etc.

The theory is that the chamber creates a higher state of molecular activity in the body, which changes the electrical charge of the cells so that they are repelling toxins that otherwise stay in the tissues. Detoxification invariably led to an increased rejuvenation. My patients were sleeping better, had better skin and felt more energized. They felt like life was wonderful and not only that, they began to make changes in their lives. They had better relations with the people around them and better health.

Of all the technologies that I have recently researched, this is one of the most powerful detoxifiers that I have encountered.

## **VICTOR'S VISION**

When I went into the chamber I felt a very, very deep relaxation. I felt energy and warmth. I went in about an hour a day, and my sleep decreased from eight hours a day to six hours, to four hours to three hours, and I began to wonder what was going on here. But I was becoming more clear and more joyful, and this has lasted to the present time. Since using the healing chamber, I have had better memory, better sleep, less need for sleep, more energy, more focus than before.

My body is becoming stronger. My pockets are full of money all the time.

Back in February I went to Maui. Two weeks in a tent with just a beautiful view doing nothing. I was not a visionary at the time, though I will get visions every once in a while. I would see some things here while I was in the chamber. It wasn't a regular thing. The last night I was in Maui, something very interesting happened. I had an explosion of light in my head. I felt like I was travelling across the galaxy faster than I could even describe. All of a sudden I feel like I am part of everybody and everything is part of me, I am connected with all of you with everything that existed. I can pinpoint everyone and everything that I have ever encountered in my life. Two minutes later I forgot that I had ever lived in physical form. I didn't leave my body. I felt like I was more in my body than I have ever been but I did not feel physicality. To me the physical world had disappeared at that moment. I felt like we had all agreed to really see what is happening and at that moment all of a sudden, we were not physical any more. We had transcended that state. I felt like we were one with God. Everything was part of God, even though I saw that we were not there yet (yet we are). We were trying to control all this energy with the mind, and I saw that we were destroying the planet. If we wanted we could

destroy everything, and the mind was making everything go into oblivion, total destruction, total obliteration, not just the planet, but of everything, the whole universe. The mind is a limiting way of looking at things. This was seven minutes into this vision. So I just became very still and stopped trying to do something about things, and the oblivion just reversed. Our mission is to protect nature. If we don't take care of nature, we're not going to make it.

### **MUSIC IN THE CHAMBER**

There's a lot of music being infused into that chamber if we listen. If we listen, first we hear that fans of the computers, then we hear the circuits going on and off and then you start hearing behind those two sounds. You start hearing these waves going around the room. And then you keep going behind that. The quieter and deeper we go and the more we become still and the more we listen, we start getting layers upon layers of more subtle, more powerful sound. That's one of the reasons I don't put on any music because I want people to listen to everything that is coming in for them.

**The information presented herein is not intended to diagnose, treat, cure or prevent. Medical advice should only be obtained from a qualified health care practitioner. HHFe makes no claims regarding the above findings.**

To contact Dr. Marcial-Vega: Ph: (305) 442-1233 Fax: (305) 442-2011  
Yardley Place 18, San Juan, Puerto Rico 00911  
Ph: (787) 598-0384 Email: vmarcialve@aol.com

**PASCAS  
PERS**

**To liberate one's real self, one's will, being one's soul, is begun by embracing Feeling Healing, so as to clear emotional injuries and errors. With the Divine Love, then one is also Soul Healing. We are to feel our feelings, identify what they are, accept and fully acknowledge that we're feeling them, express them fully, all whilst longing for the truth they are to show us.**

**Feelings first**

**LIVE FEELINGS FIRST**

**FEELINGS FIRST For Kids**

## ***The Energy of Life***

Date: 08/30/2006  
Posted By: Jon Barron

[http://www.jonbarron.org/special\\_reports/08-30-2006\\_3.php](http://www.jonbarron.org/special_reports/08-30-2006_3.php)

All life is energy. Every nerve impulse in your body is an electric current. Every cell in your body is a mini-battery pumping out 70-90 millivolts – when healthy.

Our muscles are powered by chemical energy. The steak and potatoes that you eat for dinner are really just fuel for the fire. Eating is like throwing coal in a furnace. Digestion is nothing more than a slow form of burning that produces energy for your body to live on. In fact, death itself is defined as the absence of electrical activity in the brain. In the end, all life is energy.

### **Optimize that energy and you optimize your health.**

Energy is neither good nor bad; it just is. The same electricity that is used by a chiropractor or a physical therapist to stimulate your muscles and promote healing with a TENS machine is the same electricity that is used in prisons to execute people in electric chairs. So, is electricity good or bad? The answer is neither. It's just a question of what frequency and amplitude you use and how you use it.

### **Charge your body with the right frequencies and you prevent disease.**

The same laser light that is used to shoot down enemy missiles or as a death ray in a movie is also used by your eye-doctor to improve your vision via Lasik surgery or by your plastic surgeon to remove facial hair and wrinkles. Again, the difference is merely one of frequency and amplitude.

The proper use of energy in the healing arts has a long and significant history. From the TENS machines and laser surgery that we've already mentioned to the use of sound waves to break up kidney stones, or X-rays and magnetic fields to see into the body to the use of light to clean the blood.

### **Some forms of energy are more effective than others.**

As we will see, scalar energy is merely another application of healing energy. It is the application of science as nature intended.

### **A New Paradigm.**

We are about to talk about some things concerning health and nutrition that are probably brand new to you. This topic is not inherently difficult to understand, but since it represents a total paradigm shift in how you will look at health and nutrition, we will have to proceed slowly.

**We're going to learn how to actually embed healing energy in nutritional products.**

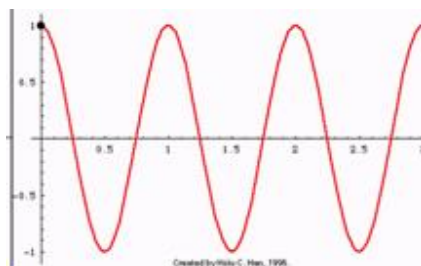
Also, in order to explain everything, we will have to touch on some very esoteric areas such as higher mathematics and sub-atomic particles. Don't panic. It won't be too involved, and after every difficult section, I will summarize what you just read and tell you the key points you need to remember.

**We're also going to learn how healing energy frequencies are transferred from the products you ingest into every single cell of your body – with profound implications for your overall health.**

With that said, let's begin.

**The Nature of Energy.**

All of the energy that we normally think of is characterized by both particle and wavelike properties. The waveform of all these energies can be graphed as a hertzian wave (either in the form of a sine wave or a step wave).



We're talking about everything from electricity to magnetism, from light to sound. The only difference between all of these forms of energy is how fast the waves rise and fall (the frequency) and how intense those rises and falls are (their amplitude).

**Scalar Energy.**

Scalar energy, however, is a different animal. Understand, scalar energy has always existed – since the beginning of time – however, it's only recently that scientists have discovered and begun to make use of it.

It was actually back in the mid 1800's that the existence of scalar energy was first proposed in a series of four groundbreaking equations by the Scottish mathematician, James Clerk Maxwell.



$$\begin{aligned}\nabla \times \mathbf{H} &= \epsilon_0 \delta \mathbf{E} / \delta t + \mathbf{j} \\ \nabla \times \mathbf{E} &= -\mu_0 \delta \mathbf{H} / \delta t \\ \nabla \cdot \mathbf{H} &= 0 \\ \nabla \cdot \mathbf{E} &= \rho / \epsilon_0\end{aligned}$$

Don't even think about trying to understand these equations.

- Just as a minor reference, H refers to the magnetic field. E refers to the electric field. Most of the other symbols are Greek letters such as epsilon and delta. The upside down triangle represents the Vector Differential.

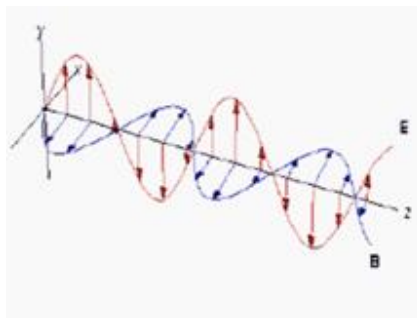
But forget all of that. The key to these equations – what makes them remarkable in history is the use of the  $\rho$  symbol, which stands for the Scalar Charge Density – thus representing the first time that the existence of scalar energy was theoretically proposed. (For the mathematicians and physicists among you looking for a more complete exploration of how Maxwell's equations demonstrate both vector magnetic potential and scalar electric potential, [click here](#).)

It was almost a half-century later before Nicola Tesla actually was able to demonstrate the existence of scalar energy. When Tesla died, he took the secret of scalar generation with him, and it took almost another full century before science was once again able to positively demonstrate the existence of scalar energy and turn to an exploration of its potential.

### What are Scalar Waves?

The standard definition of scalar waves is that they are created by a pair of identical (or replicant) waves (usually called the wave and its antiwave) that are in phase spatially, but out of phase temporally. That is to say, the two waves are physically identical, but 180° out of phase in terms of time. The net result is that scalar waves are a whole different animal from normal hertzian waves. They even look different – like an infinitely projected mobius pattern on axis.

### Different – How?



Scalar energy is different from standard hertzian electromagnetic fields in a number of important ways.

- First, it's more field like than wavelike. Instead of running along wires or shooting out in beams, it tends to "fill" its environment. **This becomes very important in terms of developing the technology for embedding products with scalar energy.**
- For many of the same reasons, it is capable of passing through solid objects with no loss of intensity. In fact, that is exactly what Tesla demonstrated over 100 years ago when he projected a scalar wave through the Earth with no loss of field strength. **Again, this is vital in the development of technology capable of embedding scalar energy in products.**
- It implants its signature on solid objects. This is actually the heart of the issue. All electric fields can implant their signature on objects, but not to the degree that scalar energy can. **This becomes extremely important when we actually talk about the mechanics of embedding the energy field in products, and then transferring that charge from the products into every cell of your body.**
- Scalar energy can regenerate and repair itself indefinitely. This also has important implications for the body. In other words, **once the charge is implanted, you can keep it there with the regular ingestion of charged products.**
- **In fact, the right scalar frequencies have a whole range of profound beneficial effects on the human body. (And we will detail each and every one very shortly.)**
- In the New Age community there has been much talk of the benefit of things like Tachyons, Radionics, and Pyramids, etc. **Analysis shows that these are all, at heart, scalar generating devices – but cannot come close to the effectiveness of ingesting scalar enhanced products.**

### **Generating Scalar Energy.**

Actually, scalar waves can be generated in many ways. For example, you can generate them Electronically, Magnetically, Physically (by the motion of a mobius strip), or Optically (by the movement of phased patterns on a computer monitor). You can actually buy wristwatches that incorporate moving mobius strips that generate protective scalar fields.

### **Embedding Scalar Energy in Products.**

As I mentioned earlier, all life is fundamentally energy based, and therefore, all life has numbers of structures capable of holding a scalar charge. In point of fact, the very same structures that allow the scalar charge to be embedded in products also allow that charge to be transferred to the human body from those same products. For example:

- There are many crystalline structures in every cell wall – all capable of holding a charge
- There are many liquid crystal structures in the collagen network comprising all of the space between cells – also capable of holding a charge.

### **And In Your Very DNA.**

We are going to get very abstract, for one final moment, before we begin to simplify everything and bring it all together. So just hang in there for a little longer.

There are Quantum Mechanical models that describe subatomic particles such as Excitons, Plasmons, and Solitons that can store and carry biological information along macromolecules in response to low level scalar energy.

### **In other words, scalar energy is capable of imprinting itself on your very DNA.**

Before we move on to the benefits of scalar energy for your health, it would be worth dwelling for a moment on what proof exists that everything I'm talking about is real.

### **There is Proof.**

It is possible to measure scalar fields, but most people don't have the required equipment. Therefore, let's turn to a form of proof that we can see right now – Kirlian photography. A Kirlian photograph is merely a specialized kind of photography that images the bioelectric field that surrounds all objects – particularly living objects.

U.S. News and World Report ran an article some time ago calling Kirlian photography a hoax. To quote from the article:

*“Controlled experiments have shown that the Kirlian photos (captured by passing an electric current through the subject, whose “energies” are then recorded on special photographic plates) are the result of moisture and pressure, not spiritual vitality.”*

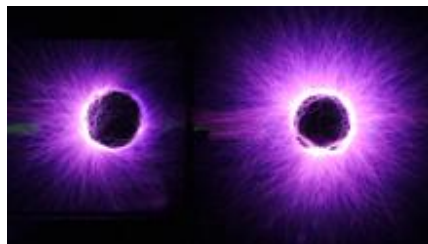
And that's absolutely true, **as far as it goes**. The simple fact is, though, that it's possible to set up a hermetically sealed environment where moisture and pressure are constant, and therefore not influencing the outcome of the pictures. And yet, even in those controlled environments, it's possible to produce startling and revealing photos. For example:

Here are two pictures of lentil sprouts – identical, except for the fact that the lentil on the left has been soaked in very hot water for a minute or so. According to the U.S. News and World Report article, since it has more moisture in it, it should conduct more electricity than the unblanched lentil on the right and produce a brighter field.



As you can see, the exact opposite is true. (If you're looking at a black and white printout, the greatly expanded red area appears dark gray.) And that's why the National Institutes of Health and Cambridge University, among other major institutes, are studying Kirlian photography, despite claims to the contrary.

So what can we learn about scalar enhanced products through Kirlian photos? Well, the absolute most important thing we can learn is that the scalar charge is, unquestionably, embedding itself in the products. Below are just a couple of examples of products before and after embedding.



Before embedding After embedding



Before embedding After embedding

The two sets of photographs above, by themselves, are revolutionary in their implications. (Incidentally, these images were produced using a brand new process – side-by-side direct digital imaging, which even further diminishes the effect of outside factors such as moisture, temperature, and pressure.)

The bottom line is that experience tells us that the more alive something is (the more organic it is) the bigger its energy field will be. **And energy enhanced products always demonstrate a bigger field.**

### **Benefits.**

This is the big question, isn't it? What health benefits are there to consuming scalar enhanced products? As it turns out, they are many – **AND THEY ARE PROFOUND.** Regular intake of scalar enhanced products can:

- Eliminate and nullify the effects of man made frequencies (60 cps) in the human body.
- Increase the energy level of every single cell in the body to the ideal 70-90 millivolt range.

- Increase the energy covalent level of every single hydrogen atom in the body as verified by spectrographs. This is significant because covalent hydrogen bonds are what hold your DNA together. **In other words, consuming scalar enhanced products can protect your DNA from damage.**
- Improve cell wall permeability thus facilitating the intake of nutrients into each and every cell and the elimination of waste from each and every cell. (As a result of the high transmembrane potential mentioned above, **scalar enhanced products effectively cause every single cell in your body to detox**).
- Decrease the surface tension of the embedded products, thereby significantly reducing the time required for your body to assimilate those same products.
- Increase overall body energy levels as a result of increasing cellular energy for trillions of cells.
- Cleanse the blood improving chylomicron levels (protein / fat particles floating in the blood) and triglyceride profiles and fibrin patterns.
- Improve immune function by as much as 149% as proven in laboratory studies, it.
- Improve mental focus as demonstrated by increased amplitude of EEG frequencies.
- Balance out the two hemispheres of the brain, again as measured by EEG tests.
- Work as an antidepressant since it inhibits the uptake of noradrenaline by PC12 nerve cells.
- And finally, there's cancer

### **Cancer.**

That's right; as if all of the benefits we've listed so far were not enough, **the regular intake of scalar enhanced products may very well play a significant role in preventing and/or reversing cancer.**

Cancer cells are, almost without exception, low voltage cells. As I mentioned earlier, the optimum cell voltage for most cells in the body is in the 70-90 millivolt range. Cancer cells are almost exclusively in the 15-20 millivolt range.

There have been many theories proposed as to why this is true. The most likely one is that as cell voltage starts to drop into the range where the very survival of the cell may be called into question, the cell begins to proliferate uncontrollably in an attempt to guarantee its "survival."

If you raise cell voltage (which is exactly what can happen when you consume scalar enhanced products), the cell no longer needs to proliferate wildly. In effect, it can become "normal" again. **The implications for this in treating cancer could be profound.**

## Questions & Answers.

### How long will products hold their charge?

- The higher the quality of the product to start with, the longer it will hold a charge. High quality “alive” organic type products actually will often display a stronger charge after 6 months then when first charged

### Are charged products safe?

- Absolutely. Again, there is nothing unnatural about scalar energy. It has been around since the creation of the universe. It’s all a question of embedding healing / energizing frequencies as opposed to harmful frequencies.

### Which frequencies do we embed?

- Without giving away proprietary information, there are two key frequencies we focus on. First, is the Schumann Resonance. This is in the 7.8 – 8 range (though the range is now spiking to over 40 as of late 2019). It is the frequency the Earth emits when there is nothing around – nothing manmade and no plant or animal life around. It is the innate frequency of the Earth. The other frequency is closer to 12 HZ. This is the frequency that you will record in a rainforest – again with nothing manmade around. These are the core scalar frequencies that accomplish everything we’ve talked about in this report.

### What will I notice by using scalar enhanced products?

- In addition, to every other benefit that we’ve outline so far, you will find that scalar enhanced products will be absorbed faster, work faster, and produce stronger results.

## Conclusion

Several years ago, I discovered and developed the Barron Effect, which incorporates the principle of energy enhancement to modify the physical structure of herbs during the tincture manufacturing process. The net result is herbal tinctures that are over 100% stronger than anything the world has previously seen.

Over the past two years I have been closely monitoring the work of several research groups (including ex NASA engineers) who have developed technologies based on similar principles of physics that allow for the embedding of scalar energy fields in nutritional products at meaningful levels.

Enhanced products through Bio-Energization:

- Enter your body faster and work better than comparable un-enhanced products.
- Enhanced products work to charge every single cell of your body with health promoting scalar waves.
- The more enhanced products you use and the more often you use them, the more profound the effect. **The effect is cumulative.**

## Interview with Lt. Col. Thomas E. Bearden on Scalar Energy and EM Force Fields

Lieutenant Colonel U.S. Army (Retired). President and Chief Executive Officer, CTEC, Inc. MS Nuclear Engineering, Georgia Institute of Technology. BS Mathematics, Northeast Louisiana University. Graduate of Command & General Staff College, U.S. Army. Graduate of Guided Missile Staff Officer's Course, U.S. Army (equivalent to MS in Aerospace Engineering). Numerous electronic warfare and counter-countermeasures courses.

The following interview with [Tom Bearden](#) appeared in a magazine called "Megabrain Report". It is dated 4-Feb-1991. The interviewers were Terry Patten and Michael Hutchison.

### Q&A Contents

<a href="#">Scalar EM (SEM)</a>	<a href="#">living systems &amp; SEM</a>	<a href="#">mind and brain</a>	<a href="#">QM problems</a>
<a href="#">missing SEM</a>	<a href="#">mind/brain &amp; SEM</a>	<a href="#">proof of SEM &amp; mind</a>	<a href="#">GR problems</a>
<a href="#">summary of SEM</a>	<a href="#">mind &amp; hidden SEM</a>	<a href="#">hydrancephaly</a>	<a href="#">credit to scientists</a>
<a href="#">SEM references</a>	<a href="#">SEM &amp; ethics</a>	<a href="#">internal brain-state</a>	<a href="#">physics minus SEM</a>
<a href="#">action at a distance</a>	<a href="#">SEM impacts</a>	<a href="#">brain &amp; hidden chaos</a>	<a href="#">Whittaker &amp; EM</a>
<a href="#">Whittaker transmission</a>	<a href="#">mind control</a>	<a href="#">SEM wave detection</a>	<a href="#">other implications</a>
<a href="#">morphic field &amp; SEM</a>	<a href="#">mind control example</a>	<a href="#">problems EM, QM &amp; GR</a>	

**Question1:** Can you offer the layman an extremely simplified summary of what scalars are, how they relate to Maxwell's equations, unified field theory, and the limitations of currently accepted quantum physics, relativity theory, and electromagnetics?

**A:** Whew! You've asked for a complete explanation of how to unify the three major disciplines of physics, specify what's wrong with the three present versions of those disciplines that has prevented their unification, and how this was in Maxwell's original quaternion equations (some 200 of which are actually his theory, not the pale four vector equations written by Heaviside and Gibbs). You also asked for an explanation of scalars versus vectors, and how the present vector analysis (of Heaviside and Gibbs) misses the boat with respect to structured scalars. And you've asked me to do it simply, in layman's terms. To say that that's a tall order is the understatement of the decade!

Okay, we'll have a go at it anyway. We'll start with *scalars and vectors*.

Basically we visualize things in the universe as two sorts those that move (have motion) and those that don't. In physics we know already that this is in error; there isn't anything in the universe, anywhere that is motionless. At least it is moving through time, which is still a special kind of motion. Also, we know that everything seems to be made up of much finer things, and these finer things are always in motion – often very violent motion. *So what we observe as a passive thing – sitting still spatially, so to speak – is made up of subthings in violent motion spatially. And the whole system that is not moving spatially is still moving in time. However, we don't see "time" but just space; therefore we see the thing as "motionless." However, the "motionless" thing we look at is rather like a fixed whirlpool in a swiftly flowing river the whirlpool seems to us to stay "fixed" and motionless, but internally its parts (the flowing water) are in constant motion.*

Another example is a container of gas under pressure – such as the air tank at the service station. The tank and "the air as a whole spatial volume" isn't going anywhere, and we see them as "motionless."

But inside the gas its molecules are in violent motion, undergoing collisions, etc. Indeed, inside the walls of the tank, the molecules and atoms are in vibrational back-and-forth motion in a spatial lattice.

The point is, *physically "motion" and "motionless" only apply to the external characteristics of the object* to which we pin the label. So it represents only an overall characteristic of the object, and does not completely describe it. In a sense "motionless" is filled with motion, and all is motion. In vector analysis, a scalar quantity is considered to be a quantity that has magnitude or size, but no motion. An example is pressure; the pressure of a gas has a certain value of so many pounds per square inch, and we can measure it, but the notion of pressure does not involve the notion of movement of the gas through space. Therefore pressure is a scalar quantity, and it's a gross, external quantity since it's a scalar. Note, however, the dramatic difference here between the physics of the situation and mathematics of the situation. In mathematics, when you say something is a scalar, you're just speaking of a number, without having a direction attached to it. And mathematically, that's all there is to it; the number doesn't have an internal structure, it doesn't have internal motion, etc. It just has magnitude – and, of course, location, which may be attachment to an object.

However, physically, when we say something has pressure or a scalar value that is not all there is to it. That particular aspect of the object or system may be scalar, but internally the thing it's labeling can still be decomposed into subsystems or particles or small things in violent motion. That is, in physics the scalar quantity can mathematically be further decomposed into an ensemble of vector quantities. Since these parts are rushing around in all directions but the whole is not translating through space, then obviously the sum of all those fractional motions must be zero. Scalar pressure, for example, can be decomposed into a myriad of opposing force vectors per unit area.

Mathematically, a vector is an entity that not only may have magnitude or size, but is translating through space. In physics, we apply the vector concept to something that is moving, and/or to position. However, when we think further, that "something" is made of smaller things, which also are in violent motion, and these smaller things may be swarming all over the place with differing velocities – or even flowing at high speed in and out of the moving "system- thing" represented by the vector. So even here, the vector thing is a special case of an ensemble of smaller things.

*In the physical world, in anything – even inside a single point – there are always infolded vector things in violent motion.* We may say that these interior critters are "*hyperspatial*" or "*infolded*" or "*virtual*" or "*hidden*". But they're real and they're inside the point, as seen by the external observer.

The point is this. Everything seen externally is a plenum internally. In the real physical world, both a thing that's externally motionless (a scalar) and a thing (a vector) that's externally translating through space, are special cases of a system whose internal parts are always in motion. If the sum of the internal motions is zero, the external object seems to be sitting still and motionless to us (though it's still moving through time with – usually – uniform motion). We describe that internal characteristic of the system as a vector zero resultant system. Externally we may also characterize it as a scalar, because it still possesses attributes that have magnitude. On the other hand, if the sum of the internal motions is not zero, but is a motion in a certain spatial direction, then to us the external object seems to be moving along in space. That is, it is translating spatially. Externally it has both magnitude and direction, so we view it as a vector. To label a thing as only a vector is to look only at its external attributes. To label a thing as only a scalar is to look only at its external attributes. To look at its



internal attributes, it must be recognized as a scalar and a vector at the same time. That is, the scalar attributes must be recognized to be composed on internal vectors.

*Summing that up, physically a scalar thing is a thing that (1) is a vector in time, which is hidden from direct observation, (2) externally is just a magnitude spatially, and (3) has an internal spatial vector structure, and therefore a hyperspatial or virtual-state vector structure. A vector is a thing in motion in a dimension (through a frame), whether in space, hyperspace, or time. Rigorously it is not possible to exclusively separate the notions of vector and scalar, because any scalar, to persist, is automatically a vector in time.*

These concepts of vector and scalar are normally not nearly so well clarified in standard physics and mathematics texts, unfortunately. Usually discussions of this type are reserved to obscure papers in foundations of mathematics. It may surprise the casual student, for example, that the notions of line, point, space, zero, length, dimension, frame, time, and observer have no truly acceptable definitions. Neither do the notions of force, mass, field, potential, etc. In fact, mathematics no longer attempts to explain how a line can be made of points. Instead, in foundations, it is simply stated as three postulations thusly "There is a class of entities called points. There is another class of entities called lines. Lines are composed of points."

From a physics viewpoint, *one of the big problems with the present vector mathematics* – which is well-known not to be a complete system of mathematics in the first place – *is that the presence of a bunch of vectors that sum to zero is just treated as a zero or absence of any vectors at all.* That is, the absence of any internal vectors at all is made synonymous to the presence of a bunch of internal vectors that are fighting each other to a draw. What this does is throw away the internal energy and internal ordered structuring of the medium – specifically, the energy of all the vector fighters that is continually going on inside the local medium – inside spacetime itself. Physically that's quite wrong, and one is throwing away exactly half the energy of the situation. There is a very real physical difference between a system of real vectors that fight to a draw and so do not translate en masse, and the absence of any vectors and vector-fighting at all. The difference is composed of stress and its internal vector patterns – the internal energetic engines in local spacetime and local rest mass – in short, the energy trapped in the local medium.

Where electrical students meet this hidden problem, of course, is in the fact that the four vector Heaviside equations of EM are not closed. One always has to assume that one or more of the "remaining potentials" is zero – that is, absent. So right there all the texts and professors reduce even Heaviside's equations to a special case of the absence of any "left-over and hanging around" scalar potentials. As an example, that little assumption gets rid of any possibility of the Aharonov-Bohm effect, where potentials alone can interfere, even in the absence of EM force fields, and produce real force effects in charged particle systems. That is, the sole agent of the interference of scalar potentials can induce EM changes, according to the experimentally proven Aharonov-Bohm effect, even in the total absence of EM force fields.

Since 1959, it has been known in quantum mechanics that the *EM force fields are not primary agents at all.* We know that classical EM theory is completely wrong on this. *QM shows that it's the potentials that are primary, not the force fields.* In fact, it can be shown that the [E-field](#) and [B-field](#) do not exist as such in vacuum; only the potential for the E-field and the B-field exist in vacuum.

Feynman pointed that out, but nearly all of his modern cohorts seem not to have recognized that fact. Indeed, *vacuum is just a conglomerate of potentials*, nothing more, nothing less. And if you just look carefully at the definitions of force and E-field, you see immediately that (1) force (non relativistic case) consists of mass times acceleration. Therefore a force consists of an accelerated mass. An electric force consists of an accelerated charged mass, normalized for a unit. But it really isn't treated that way in the EM theory, where it continues to erroneously considered to exist as a force field in the vacuum.

At least you've got to use the adjectives "virtual" and "observable" to differentiate vacuum things from material things. One can correctly state that a virtual electric force field exists in vacuum, comprised of accelerating virtual masses, but not an observable force field. The observable electric force field requires, and consists of, accelerated observable charged particles. And the only place observable particles exist are in a physical medium, of a collection of one or more observable particles in space.

So it doesn't take any special powers of thought to directly show that there are some very serious, fundamental things wrong with the present foundations of EM theory. There are lots of other flaws in EM, such as the fall of the Lorentz force law in modern railgun experiments. The law has always been false, but is a sufficient approximation if the energy regime is not too high. Peter Graneau's work is fundamental in this respect.

To sum this up another way. *The present vector analysis (as applied to electromagnetics) discards the internal, trapped EM energy of local spacetime.* Now if the internal trapped energy of spacetime varies from place to place, that is called a curved spacetime, relativistically speaking. And when a spacetime is curved, there is communication of energy between the internal, infolded, virtual EM energy state and the external, translating, observable EM energy state. Curved one way, the local spacetime is a sink, with external energy pouring into it continually, and disappearing from observation of the external state. Curved the other way, the local spacetime is a source, with energy pouring out of it continually, and appearing in observation in the external state.

What the present vector system of EM does, therefore, is throw out the ability to use the very strong EM force as an agent to curve local spacetime. The very mathematics itself, a priori, assumes and guarantees a locally flat spacetime. And in an uncurved region of spacetime, for example, you are never going to make an over-unity machine – a so-called "free energy" machine that will give you more energy out than you put in – because the application of the vector theory a priori guarantees the elimination of any hidden sources from the local spacetime (ST) medium. If you're going to tap the trapped vacuum energy, and make a so-called "free energy" device, you're going to have to curve the local spacetime. That is the only way to produce a local energy source in the vacuum, from which a current issues. Notice that, when we put a paddlewheel in a river, we produce a free energy device because we tap some of the energy in the flow. But we tap a current, we do not just tap a potential per se. The entire secret of tapping vacuum energy, to build a free energy device, is to produce a current in the local vacuum potential that is self-sustained, and then tap that current.

So the *present EM theory throws away exactly half of the energetics of the situation involved.* From time to time yet another physicist discovers that astonishing fact, and publishes a paper on it to point it out. Nobody does anything about it, however, because no one has the foggiest notion of what to do. So everybody just lets it pass and nothing is changed.

**Question2:** Can you give us a more concrete example of the missing half of the energy?

**A:** Yes. Suppose, for example, you connect a voltmeter across a wall circuit to measure the voltage. The meter needle moves against a spring with a force, as a result of the detection made by the voltmeter. The actual detection is an interaction inside the meter's probe which induces conduction electrons to move. We read the needle movement that resulted from those conduction electrons, and we infer so much voltage. The important point is this, The voltmeter is measuring the energetics of its own internal change; it is not at all measuring anything external. All instruments measure only their own internal change. We infer the external thing that interacted with the instrument to cause the internal change. We do not measure the external entity directly, but only the results of its interaction inside the probe and meter. And even then, we measure only the external, spatial-translation energy of the instrumental interaction; we do not measure or account for the internal energy of that interaction. To state it more precisely The needle moved because conduction electrons accelerated away from the instrument's interaction area. This current flowed into a coil and produced a force on the needle movement, rotating the needle against a spring. At the same time, another current – a time-reversed, phase-conjugate current – was induced in the atomic nuclei of the atoms in the interaction area. This "inner current" flowed Whittaker-wise through the atomic nuclei of the instrument, producing an equal and opposite force. [This is the mechanism that produces Newton's third law in the first place, as suspected by Feynman.] So the entire body mass of the meter recoiled slightly from an equal and opposite force, which we just loosely refer to – and recognize as – Newton's reaction force. It's there, it's real, but we completely neglect it in our electrical measurements. Usually we don't think it had anything to do with the external entity that interacted with the voltmeter. But it was a product of the same interaction of that external "something" within the meter. It's equal and opposite to what generated our electrical measurement. So exactly as much energy was produced in the "reaction force" energetics as was produced in the "external meter needle force" part of the interaction. We only measured and accounted for half the true energy of the interaction, or else you've got to discard Newton's third law.

It follows that what actually entered into the interaction was a system of oppositely paired forces – a stress field, which is a *scalar potential*. This, of course, is consistent with our observation that *vacuum itself is pure potential*. As such, it consists of partial potentials of various kinds – it's highly charged, and the ambient vacuum scalar potential has very high magnitude. Remember that this ambient vacuum stress (potential) can be decomposed into sets of bidirectional forces. In our EM interaction, one- half of the stress pair – the half that is the normal photon-generated EM force was utilized to move the conduction electrons, involving primarily the electron shells of the atoms imbedded in the vacuum potential. The other half of the stress-pair interacted with, and moved, the atomic nucleus, causing it to recoil. The recoil of the nucleus was slight, because it is very, very much heavier than the accelerated outer electron.

To sum it up:

All detection is actually binary, it's not singular at all. When we detect photons or EM waves, we normally account for only the externalized translation part of the energetics of the interaction. We miss or neglect the internalized translation part, and we miss or neglect precisely as much internal energy as we account for externally. Again, I'm not the first one to point this out by any means.

**Question3:** Can you give us a precise summary statement of all this?

**A:** At the interaction area, a part of the instrument and the external causal agent are coupled together as a compound system. In that area, the mass of the instrument exists as atoms, each of which has an inner part (the nucleus) and an outer part (the electron shells). In the coordinate system centered on that compound system, conservation laws apply. The compressive stress of the interaction reacts internally – i.e., against the atoms with their inner and outer parts. Reaction from the nucleus induces a tensile stress. This tensile stress, in the simplest case, can be decomposed into equal and opposite forces, since stress is merely a set of such equal and opposite forces. One of the bidirectional interaction forces moves externally out of the atom via the electrons, electromagnetically producing a conduction electron current through the instrument and giving a needle reading. The second bidirectional interaction force moves ever inward, since it is a phase conjugate and reconcentrates inward ("crawfishes") rather than scattering outward. This forms a hidden Whittaker current through the atomic nuclei, producing a recoil on all of them. *Precisely as much EM energy went into the inner system as went into the outer system. But we normally only measure and account for the external energy, and ignore the energy in the internal channel.*

**Question4:** Can you give us a reference related to this, for example?

**A:** I'll give you several of them that bear directly on this. See R. Chen, "Cancellation of internal forces," American Journal of Physics, Vol. 49, No. 4, Apr. 1981, p. 372. Chen gives a discussion of these summation vectors and internal vectors. He points out that the internal forces occur in equal and opposite pairs; in other words, as internal stresses. That's certainly pointing out the internal, bidirectional force structure of a scalar stress – a scalar potential, if we're talking EM stress and EM forces. Note that this internal pattern is exactly what Maxwell's quaternion theory captured and retained, and that the Heaviside and Gibbs vector theory discards. Further, the quaternions captured the internal order of this internal force vector structure as well. Second, in a beautiful article Kidd bluntly states that all our measurement/detection is really binocular. See Richard Kidd et al, "Evolution of the modern photon," American Journal of Physics, Vol. 57, No. 1, Jan. 1989, p. 27-35.

[E.T. Whittaker](#), of course, wrote the definitive engineering methodology of how to do all this with EM waves – how to infold the EM waves into a bidirectional wave structure that produces a standing wave of externally force-field-free scalar potential. The two Whittaker papers are (1) "On the partial differential equations of mathematical physics," *Mathematische Annalen*, Vol. 57, 1903, p. 333-355; and (2) "On an expression of the electromagnetic field due to electrons by means of two scalar potential functions," *Proc. Lond. Math. Soc., Series 2*, Vol. 1, 1904, p. 367-372. Now these *hidden internal wave structures exist in all scalar potentials, whether they are electromagnetic or not*. For example, Ziolkowski has pointed out what is actually Whittaker's 1903 infolded bidirectional planar waves inside the acoustic scalar wave, in work on acoustic missiles. Acoustic missiles are slugs of very strong sound energy that stay together in a slug as they travel, and strike a target a terrible blow, just as if it were a "missile made of sound energy." [See Richard Ziolkowski, "Localized transmission of wave energy," *Proc. SPIE Vol. 1061, Microwave and Particle Beam Sources and Directed Energy Concepts*, Jan. 1989, p. 396-397. Ed.] A Soviet scientist, Ignatovich, has pointed out the same remarkable bidirectional wave structure inside the scalar potential associated with the Schroedinger wave equation itself. [See V.K. Ignatovich, "The remarkable capabilities of recursive relations," *American Journal of Physics*, Vol. 57, No. 10, Oct.

1989, p. 873-878. Ed.] And I've pointed out a mechanism by means of which you can make a quantum potential, so that separate things – even widely separated – can interact as if they were all pieces of the same system, and all located together at the same location. Further, I've pointed out that you can deliberately structure that quantum potential with a Whittaker bidirectional wave structure.

**Question5:** Can you make that last part a little simpler?

**A:** What that means is that *in QM, there's a special kind of potential you can make, that can connect spatially separated things and translate energy between them, in hidden fashion and essentially instantaneously*. This "connection at a distance" directly results in [action-at-a-distance](#). I've advanced the mechanism for making one of these quantum potentials, so it is subject to laboratory test. Further, in that artificial quantum potential you make, you can put in a hidden EM wave Whittaker structure – hidden "pipes inside spacetime" itself, so to speak. Then you have established hidden EM-wave-energy channels through spacetime, connecting widely separated entities together. You can then put energy and specific energy patterns – vacuum engines, if you will – directly through those hidden channels. You can have the hidden energy emerge at a distant point and interact in and on a distant physical system there. This distantly-emerging interaction energy can be positive (disordering, or scattering) or negative (reordering). Transmitting scattering energy, you get distant heating – the production of heat energy at a distance. Transmitting reordering energy, you can extract energy from the distant object or system through those hidden channels, accomplishing distant electrostatic cooling. The other thing to note is that EM energy transmission through the hidden channel is not limited to the speed of light. The speed of light refers to energy transmission through 3-space, and *the internal channel refers to energy transmission around 3-space, or in other words, through hyperspace*. And it's testable on the laboratory bench.

**Question6:** Are you saying that real energy can be transmitted faster than the speed of light?

**A:** Yes. But *hyperspatially*. Not through 3-space, but "around" it.

Again, this means that *it's possible to produce energetic changes in a distant system at a distant place, without transmitting energy "through space" in the normal sense*. You transmit "around" space, so to speak, and directly in time or *through a higher dimension*, depending on the model you're using to understand this. Further, the speed of the internal EM energy transmission is not limited to the speed of light. Whittaker already specifically pointed this out. Quantum mechanics also predicts instantaneous action-at-a-distance and has essentially proven it experimentally. Finally, *you can specifically Whittaker-engineer this "hyperspatial" transmission, if you will, to do essentially whatever you wish to do in that distant system*. It all depends on how far you develop the technology; the basis is there. Hypothetically, you can eventually even develop a kind of teleportation. Whittaker transmission through the internal channel is already "teleportation" of energy, so to speak.

**Question7:** Does this have anything to do with Sheldrake's morphogenetic field?

**A:** Yes indeed. [Sheldrake's morphogenetic field](#) is pure-and- simply a *species quantum potential*, created amongst the members of a species. As experiences are met by the individual members, they steadily input infolded EM structures into the "inner" EM channels of that quantum potential. Since any infolded EM wave has its phase conjugate – or time-reversed replica – produced and infolded

automatically, a sort of "negative feedback" corrective EM signal pattern for all inputs of the bad external EM stuff exists inside the quantum potential. One can show that, for detrimental changes to the species' members, time reversal provides infolded signals that represent an exact counter to the "overstress of the species," so to speak. These "corrective antidotes" for the overstressed species, however, are in the virtual state. But as more of the same detrimental changes are experienced over generations, the countering signal structures residing in the species quantum potential will be increased over the same period of time. Gradually the hidden EM structure – which is like jillions of little "vacuum engines" – is changing and internally structuring the Schrodinger potential for that species.

Then one day the internal corrective charge is sufficient to breach the quantum threshold. One could also say that the spacetime potential occupied by the species members is now sufficiently curved and structured to serve as a specific- signal-pattern energetic source for genetic change. Breaching this threshold causes specific new genetic changes to occur in the entire species in a single jump. At that point, the actual genetics of egg fertilization (conception) is altered, and shortly thereafter members of the species start being born with the new change, specifically designed to counter or partially counter the former detrimental aspects in the species overstress. In a dramatic example, that's how a reptilian species can "suddenly" develop light, air-filled bones; feathers; and wings, for example, and change from a reptile to a bird in one single jump. *Sheldrake's morphogenetic field is a species quantum potential and the charged-up Whittaker structure is the inducing agent.*

**Question8:** You're saying, then, that living systems use this inner, hidden EM energy channel in addition to the external energy channel that we know in ordinary external electromagnetics?

**A:** Absolutely. In fact, the distinction between a living system and a nonliving system is precisely the fact that *the living system deterministically utilizes the inner EM energy channels inside Whittaker-structured scalar potentials. And those scalar EM potentials are centered on the atomic nuclei of atoms* comprising the living system's molecules, cells, tissues, and mass.

**Question9:** How does that relate to present brain-wave research and measurements of brain-waves electromagnetically?

**A:** It says that present research is devoted almost entirely to measuring and pondering the surface waves in the ocean, so to speak. *The mind, thoughts, emotions, and real living functioning systems are deeply hidden, underwater waves in that ocean.* Science will have to instrument for detection and recording of the hidden interior energetics region, or they will never solve the mind/brain/body problem. And *without the interior energetics*, they will never understand life, memory, personality, thought, and primary biological control, or human intent.

**Question10:** You are saying, then, that this hidden internal electromagnetic energy channel is intimately connected with the mind, life, and personality?

**A:** Absolutely. The mind consists of *stabilized Whittaker structures inside the living system's bio-potential. Thoughts* are a special class of changes/waves in that overall Whittaker-structure ensemble. The *personal unconscious* is a single small, localized sample of yet a greater collection that represents even deeper unconsciousness.

The *conscious mind* is a serial processor – one thing at a time. The *unconscious mind* is totally conscious, but it is a parallel processor – jillions of things at one and the same time. The serial conscious mind can only make sense of a "single slide in the slide projector" at a time. When it looks at the unconscious mind, it sees a multitude of slides in the slide projector simultaneously – hence it just sees blackness, or nothing recognizable at all.

[Jung's collective unconscious](#), for example, consists of archetypal infolded EM structures acting in common in an overall bio-quantum-potential for the entire species. Gaia, the living Earth / biosphere, really does scientifically exist as a common bio-quantum-potential with infolded living EM structures for the entire Earth biosphere. The *bio-potential in a single body is an overall quantum potential* that links and joins all the atoms and cells of the body. The "spirit" of the biosystem, if you will, is its "living bio-potential" – *its living quantum potential*. We already know that a potential is everywhere nonzero all the way out to infinity. So the spirit of the living system is – in the virtual state – everywhere in the universe – and every when as well. [It's all a giant hologram, not only in space, but in spacetime.](#)

The entire universe is everywhere alive, with everything. Note that if you simply examine the "ghost forms" requirement of quantum mechanics, this conclusion is inescapable. All life is eternal. Nothing is ever lost. A thought or thought-form is just a specific, dynamic Whittaker structure in the hidden EM channels of the bio-potential. *Thoughts and thought-forms are real*. They are virtual spatially, but they occupy one "real" space-time dimension, time. Physics and metaphysics share one common, non-observable dimension time. So long as physics continues to have time, which is non-observable a priori, then it also must contain everything that is a structure or action in time. [Skeptics of parapsychology, who believe that humans are robots](#) and the mind is just a meat computer, just have little or no foundations knowledge. And if you get carried away by the "observable, objective science" bit, remember that the choice of fundamental physical units in physics is arbitrary. You can – and it's actually been done – build all of physics from time as the single fundamental unit. That means that *you can build the whole observable, detectable physics model out of the totally unobservable and nondetectable*. Quantum mechanics long ago destroyed materialism for all time, but it just hasn't percolated through the prevailing scientific dogma yet.

With Whittaker EM engineering, you can conceivably *"make" thoughtforms to order, and input them directly into the mind and longterm memory*. If we view the conscious mind as a special serial computer, we have now found where the software is – for mind, longterm memory, and personality. *As scalar EM technology develops, we will have direct access to the software*, so to speak, for the very first time. And we will be able to engineer it at will.

**Question11:** But is this good or bad?

**A:** Actually it's either, or both. We are describing a *set of hidden internal EM energy structures*, the fundamental mechanism for internal EM structuring, and a tool. A tool is amoral; it has no morality, and is inherently neither good nor bad. The intent of the user of the tool, however, may be either good or bad. So the tool can always be used either way, for beneficial purposes or for evil purposes. It's the hand that wields the knife that is moral or immoral; it is not the knife. The same cutting tool can be used by the surgeon to heal, or the murderer to kill. Human intent differentiates amorality into morality and immorality.

**Question12:** What is the biological impact of the forthcoming new technology that directly accesses and engineers the internal energy regime?

**A:** It will be both a tremendous blessing and a terrible curse. *It's the most powerful tool ever conceived.* By engineering the Schroedinger equation, for example, one can theoretically engineer physical change itself. One can actually engineer physical reality, change the laws of nature, and determine if a thing shall even emerge into physical quantum change at all, or if it shall change its physical form. Mind-wise, *eventually one will be able to directly input material into the mind – whatever is desired.* Education, for example, will simply be achieved by "loading the proper software." Everyone will be enormously educated, by today's standards. That should for the first time allow the complete alleviation of unemployment due to lack of employable skills, for example. It should be possible to virtually eliminate unemployment and poverty. Any sort of disease whatsoever – physical or mental – will be rapidly curable, simply and cheaply. It will be possible to reverse aging and rejuvenate the person. It will be possible to regrow limbs and straighten misshapen spines – and directly remove the causes of mental diseases and cure them as well. Lifespan will be staggeringly increased, without "old age's debilitation." AIDS, cancer, leukemia, and genetic diseases will be completely conquered. The potential for a true golden era is upon us, for all humanity.

On the other hand, it will also be possible to simply pull out a personality-structure from a person, without his or her consent, and insert another. Or to alter a given personality structure by just altering and re-recording the software. This technological possibility, of course, will certainly be noticed by would-be egomaniacs and dictators, for it can yield the *ultimate mind control.* It will also be possible to provide direct input inside the mind, surreptitiously, from a distance and *without the knowledge and consent of the individual affected.* This can be beneficial if it's just "instantaneous telepathy" – instantaneous communications, so to speak, and if it's desired by the recipient. It can be highly detrimental if it is undesirable material, or if it's a forced internal change, or enslavement, or used to overwhelm and destroy the mind, or used to jam the body's immune system, induce virulent diseases en masse, etc. Unless the present inhumanity of one human for another is overcome, future wars are likely to take on aspects that stagger the imagination. In 1975 Brezhnev called *these new mass destruction weapons of the future "...more frightful than the mind of man has ever imagined."* He should know. When he made the statement, the Soviets had already been *inducing diseases in persons* in the U.S. Embassy in Moscow for nearly 30 years.

**Question13:** Can you explain that part about direct, forced input to the mind, just a bit more?

**A:** Yes. It involves a characteristic of the mind and brain that has been experimentally shown. For example, if anything (thought, feeling, emotion, image) arises internally in one of the cerebral hemispheres, that hemispheric personality thinks that it did it. That is, it thinks that it not only thought the thought, but that it also created the thought. So if you have a hidden channel to pipe in inputs, you can take over or implant the thoughts, behavior, and actions of a person. Or of a very large group of persons. That alone allows a mind-numbing direct control of behavior externally and from a distance.

**Question14:** Can you really control behavior electromagnetically? Can you give us an example?

**A:** Yes, you can control it readily and deeply, if you develop and utilize the internalized EM energy channel technology. As to proof, Delgado certainly has demonstrated profound control over animal



behavior experimentally, for all the world to see, using implanted probes and precise injection of EM signals. The Soviet LIDA machine, using a 40 MHz carrier and complex waveforms – and actually the hidden Whittaker-infolded EM structuring, unknown to Western technologists – has demonstrated the ability to place a mammal – either a human or a cat – in a cataleptic state. That state can be induced in a few minutes exposure and then persists for some minutes after the stimulus signal is removed. That proves that you can profoundly alter the mental state, electromagnetically.

Perhaps the very best example is provided by the two cerebral hemispheres in your own head, or those in a rat, or those in a cockroach. As we know from split-brain research, each hemisphere has a separate personality. That's a separate being, if you will, to put it bluntly. Yet even though you are two beings in one body, so to speak, you are only conscious of one being. How is that, you might ask, since both brain halves are operating? How do you integrate two beings consciously into one functioning being? Such as is already done in your own head?

The answer is this. Suppose your left brain sends a signal to your right thumb to move. While the signal is on the way to the right thumb, the left brain also sends a replica of the signal over the connecting corpus callosum, into the right brain half, where it emerges inside. [When the signal emerges inside a brain half/mind/personality, it thinks that it itself originated it. That's because it perceives no time delay between appearance of the signal in its "transmission" section, e.g., and the appearance of the signal in its "receiver" section.] The ultimate definition of identity, after all, is the absence of all distinction. The absence of functional distinction in time constitutes the creation of identity in time. The whole arises when and only when distinction between the parts is lost.]

The right thumb is continually communicating back to the left brain half, telling its progress. Replicas of those return signals from the thumb are continually being sent by the left brain across the corpus callosum into the right brain. The right brain thinks that it originated the thumb- move-order, and that the right thumb is reporting its progress. The right brain thinks it did the whole thing itself. A similar process occurs, of course, from left brain to right brain. Each inputs to the other, at least insofar as awareness of the order and the event is concerned. Each thinks that it did it. In that way, there is a loss of distinction between the parts of the functionality. Accordingly, there is only one sense of being in the bi-system, even though there are two separate beings.

It has also been shown that, when the corpus callosum is severed, the two brain halves now function much more independently. In that case, two separate personalities really do emerge and function in one body. That also has been shown in the laboratory.

**Question15:** But aren't you actually saying that the mind and thought, then, are not really just electrical wiggles in the brain after all? That they are actually separate from the physical brain, and the brain is just a special sort of tuner or "workstation"?

**A:** Exactly. The real functioning of mind, thought, memory, and personality occurs in the infolded Whittaker bidirectional EM wave structures of the overall body's scalar potential – its bio-potential. And one of the great neural scientists has already pointed out that mind and memory are not precise functions of physical location in the brain.

**Question16:** Is there any real proof of the internal energy channel operation of the mind, or is it just all still a theory or hypothesis?

**A:** The basis can be shown, and it is directly subject to laboratory test, with a decent laboratory and a little effort. Let me give you a very strong datum point.

There exists a rare, completely bafflingly medical phenomenon – which has until recently been concealed – called *hydrocephaly*. To the normal materialistic Western biologist, this condition is astonishing, to say the least. In hydrocephaly, a person's cranial cavity is filled almost totally with fluid, not with brain matter. There may be only 5% or so of the brain in there; typically just the small portion on the tip of the spine. The other 95% of the brain case is filled with fluid. Yet the individual may be as normal as you or I. Except, of course, that x-rays of his head will astonish all the doctors. A few years ago, for example, such a hydrocephalic individual graduated from a university in Great Britain, with a degree in mathematics. British news actually made a video documentary on this subject, and particularly on that individual.

Now obviously *hydrocephaly proves rather conclusively that it isn't really the brain matter or the electrical wiggles in the two hemispheres that constitute the mind*. Those wiggles normally are correlated with, and communicate back and forth with, the internal Whittaker dynamics of the bio-potential. The brain is a special communications and processing station, interfacing sensors and processed stuff from the external world to the Whittaker-sets, and outputs from the Whittaker-sets to the body and cells. If just a small functioning part of this "way station" remains fully functional, the interfacing still exists.

**Question17:** Can you shed any light on the functioning of the fluid that fills 95% of the brain cavity of a hydrocephalic?

**A:** Perhaps a little bit. There's an interesting thing about fluid – about water. *The hydrogen bonding structure of water is enormously complex and richly varying. Bond- structuring of water constitutes a special kind of "neo- Whittaker" substructure inside a special kind of potential for that particular body of water*. A glass of water, for example, has an overall neo-potential comprised of its hydrogen bond structuring. That water will change its internal bonding structure if you enter the room, or if you blink your eye while observing it. It continually adjusts to everything in its surroundings. The reason is, everything in its environment has charges, and clumps or orderings or structures of potential. And the internal Whittaker structures of all those potentials overlap because the potentials overlap. Therefore the internal bidirectional Whittaker EM waves intercommute. *The internal dynamics of the water receives inputs from the surroundings this way, and the water's bonding structure changes accordingly*. We've only known the complexity and richness of this water structuring for less than two decades, and so far as I know, no one else seems to be considering the Whittaker infolded EM wave structure aspects of it.

The point is this. *In the fluid inside the head of a functional hydrocephalic*, the water structuring is quite sufficient to provide the rest of the needed "way-station two-way tuner, processor, and transmitter-receiver." The reason is quite simple The potential of the fluid constitutes a partial potential in the overall bio-potential of the body. It's like the pressure of a mixture of gases the overall pressure consists of the partial pressures of the component gases. The Whittaker structures ensure

intermingling and intercommunication through the internal energy channels of the total bio-potential to all its constituents. Therefore *the water structuring of the fluid in the head of the hydrocephalic serves – bridgewise – as a substitute brain.*

Other supporting evidence, of course, is that *quantum mechanics experiments have essentially established action- at-a-distance and quantum correlation. The quantum potential, therefore, is something real and functional after all.*

*And even more evidence is provided by the nature of a linear material versus the nature of a nonlinear material.* However, that would take a book, and is just too much to cover in this interview. Suffice it to say that a strong argument can be made from the nonlinear characteristics and phenomena themselves, such as production of time-reversed waves, amplification of time-reversed waves, negentropy (re-ordering of scattering energy), etc.

The bottom line is that there's certainly enough evidence to substantially support these hypotheses, and move them from the realm of idle speculation to the realm of "worthy for further experimentation and development." The ultimate proof, of course, will be when one demonstrates the actual production, recording, and functioning of a living mind. With the internal energy approach, that is hypothetically quite possible, and will eventually be lab-demonstrated.

**Question18:** How is this related to the neurons, synapses, and dendrite firings in the normal human brain?

**A:** The same "internal electrical structure" thing is true of the brain and its dendrite firings, EM waves, and tiny but extremely numerous currents and fields. Take an instantaneous snapshot of all the dendrite firings – billions of them – frozen for an instant. The actual pattern or structure represents the internal state of the brain's bio-potential at that instant. Take another snapshot a moment later.

The change of the internal structuring represents the brain's internal structuring at a new moment. Interfering (subtracting) the two snapshots provides a delta that represents the exact and total change that occurred in the brain-state during that tiny interval between snapshot one and snapshot two. But since thought itself is a change in internal brain-state, then the thought patterns during that interval must be contained in those changes. And of course a myriad of other brain control actions are in there as well. Commands to beat the heart, direct biochemistry of cells, etc. To detect the internal state precisely, one now needs to decompose that delta pattern into its Whittaker-structure components and sort them all out.

**Question19:** How would one go about detecting the internal state, to get at the actual thoughts themselves?

**A:** Well, one has rather much got involved with [the standard chaos problem](#). You've got hidden order (the thoughts) buried up in a lot of extraneous material. In other words, you're looking at something statistical, and it's got several kinds of hidden order hidden in there in what to you appears to be a whole lot of noise. So you do something very similar to what we described in the snapshot analogy, but apply Whittaker-channel detection at the same time. Actually, a first step in this direction has been beautifully done by Dr. Hunt. She divided the external brain-wave region into several frequency

bands. (Actually, harmonic intervals are best, per Whittaker theory.) She set up individual detectors for all the frequency channels simultaneously. Then she divided each of these channels in two branches one branch straight through without a time delay, and the other delayed by a bit, say, 6 milliseconds or so. Then she mixed all the delay channels onto all the nondelay channels, and recorded the superposition. And lo and behold, she got beautiful traces of hidden chaos in brain wave activity. The traces exhibited the standard chaos attractors. Her magnificent work is very *strong evidence that the real activity of the mind occurs in hidden variables, in hidden channels inside the normal "envelope/external electromagnetics" represented by normal brain wave measurements.* Hunt has shown that there is a hidden, deterministic, dynamic order "inside" the normal statistical EM brain activity.

Over two decades ago, a Russian scientist, Lisitsyn, obliquely spoke of Russian breakthroughs in this area. Lisitsyn stated that the Soviets had "broken the human brain code." He further stated that some 23 channels were involved, reaching all the way up to optical frequencies. However, only 11 of these frequency channels were independent. He also mentioned that the brain coding did not number over 44 "digits".

Now I interpret his remarks as indicative of direct application of Whittaker theory. Lisitsyn of course did not give the details; that's highly classified in the Soviet Union, as witnessed by the Petukov/Toth incident in Moscow. However, I interpret Lisitsyn as having obliquely referred to 11 independent Whittaker frequencies – the fundamental frequency and 10 harmonics – that are used by the brain workstation to intercommunicate between the mind and the external electrical/physical functioning of the organism. I interpret the remark about 44 digits to probably mean that there are some 44 different independent Whittaker spectrum sets, where each spectrum consists of the fundamental and 10 harmonics. And in each frequency channel of a set, there are two bidirectional EM waves – actually, an EM wave and its time-reversed antiwave (phase conjugate replica).

**Question20:** Can you tell us something more about detection of standing scalar EM potential waves?

**A:** For fundamental detection of the scalar wave, you must realize that several kinds of detectors can be utilized. One kind is a spatially-oriented detector, and detects spatial aspects and changes of the scalar wave and its internal substructure. The other kind detects variations in the local rate of flow of time, and then the "finer time wave structure" of that variation. With either type, the problem has two parts. Let's look first at the spatially- oriented detector.

First, one must detect the absolute potential at the point of intersection. Second, in this detected potential, one must detect its internal, infolded EM bidirectional wave structure – in short, its Whittaker structure. An additional requirement, of course, is that the instrument must be shielded against the effects of spurious EM signals in the area. In short, it must be in a Faraday cage. Even more than that, one must be able to vary the grounding potential on the shielding cage. One must be able to let it float, have it at ambient, or move it to some specific value.

A Geiger tube, for example, will usually detect a strong absolute potential. That is, the potential increases the charge on the atoms or molecules of the gas it contains, and at the ionization point, the gas starts to ionize. The counter, of course, then counts the ion discharges, whose rate is correlated to the level of ionization, and hence to the strength of the ionizing agent. Note that Geiger tubes do not

necessarily detect nuclear radiation; they detect ionizing radiation, regardless of the type. While nuclear radiation is certainly ionizing radiation, so is strong scalar radiation. Even though the scalar wave is a standing wave, its increased level of potential can ionize the gas in the tube. Of course, if the standing scalar potential wave is a sine wave function of the radial distance from the source, and the Geiger counter is at the node, it will not read because there is no difference there from normal ambient vacuum potential.

Note also that the so-called "microwave radiation" of the U.S. Embassy in Moscow was detected originally with a nuclear radiation detector – probably a Geiger counter. Pure microwaves are non-ionizing, and would not have activated the counter. Shortly I will have a new book out, *Gravitobiology A New Biophysics*, which will explain precisely how the health changes in the Moscow radiation were induced in U.S. Embassy personnel. In the book we will also explain Kaznacheyev's "death photons" and the EM induction of disease at a distance. We'll also explain the mechanism for producing an EM antidote signal for any disease, known or unknown.

The problem with the Geiger counter as detector is that it only accomplishes half the job, even when it works. It doesn't break out and measure the Whittaker bidirectional EM wave structure of the ionizing potential at all.

Here is a possible scheme for a better detecting system. Use two detecting probes, some small distance apart, inside the shield. At each probe point, use a high input resistance, very low voltage detector – microvolts or picovolts range, normally. The signals should then be mixed and another difference frequency detector of similar kind utilized. Under proper circumstances, this produces a normal EM beat frequency (via the Aharonov-Bohm effect). The second stage of the detector can then come into play. The beat frequency is input into a standard spectrum analyzer, which should detect the components of the Whittaker spectrum as modulations on the detected Aharonov-Bohm effect beat frequency.

The disadvantages of this detector are two-fold. One, the actual ground potential at which the shield is biased, affects whether or not you get a detection. Second, it's basically a very short wavelength detector for, say, millimeter waves to waves in the one meter band. That should be good enough for scalar communications research, however, and the Soviets have reported highly significant biological effects of the Lisitsyn kind at about 2.1 millimeter wavelengths.

For longer wavelengths, one has to either have rather widely separated instruments operating in a bistatic reception mode, for the scalar interferometry, or else use delay- materials and schemes in probes. Another way that can be worked out is to use a characteristic of nonlinear materials. If a sine wave is input to a nonlinear material, harmonics are produced. By tailoring and choosing the materials, one should get appreciable frequency shifting up the scale via harmonic production.

Another way is to realize that a standing scalar potential wave can also be considered as a standing wave in the rate of passage of time. So the presence of a scalar potential alters the local rate of time passage. But since it alters time flow, it affects everything else that locally exists in time – and that's everything. More exactly, there is a stress effect on the rate of flow of time. And there are certain detectable functions that occur in detectors and solid state components, for example, that occur because of the time stream stress changes. I cannot be more specific, because the effects I know about

here were discovered by John Schnurer and are proprietary to him. But John can build a detector based on this effect, at least for the overall potential. It remains to develop detection of the EM substructure and its spectrum, and he will have a very good scalar EM system detector.

Other things very useful in developing detectors have been reported by Hunt, Bedini, Beck, Howonadec, Golden, and others. Golden particularly has a very good scalar communications detector, and several good scalar communications transmitters. One of his typical detector systems, for example, will perform between 20 and 30 dB better for a given power transmitted than will a normal communication system with high gain antennas. And, since the detection of scalar involves unfolding the inner energy spectrum of the Whittaker structure, a direction finder cannot get a direction fix on the signal transmitted via the scalar system.

Beck has certainly demonstrated an extremely sensitive coil of ultrafine wire, that can often outperform the finest superconductive quantum interference detector (SQUID). The use of extremely fine wire – and lots of overlaying coils – drastically reduces or blocks the radial movement of electrons in any one point in the wire in the coil. Since that's the way electron current actually moves – the movement down the wire is due to drift velocity, and certainly is not the signal – Beck's coil effectively prevents most of the "external electron bleedoff" from the stabilized scalar potential. Thus he's able to block most of the external electromagnetics, and thereby retain the inner part as well. Precisely, his coil is now using gravitons, not photons, to a significant degree. So the coil as the interaction area of an instrument is able to hold and pass some of the internalized EM energy that normally escapes into and through the nucleus only. At the output of the coil, Beck gets EM from this internal component that the SQUID doesn't see because it doesn't do the escape-blocking in its interaction area.

There are other detector schemes, of course, such as holographic interferometry, but this should give you an idea of some of the things that have to be done to perform good laboratory measurement of scalar electromagnetics.

**Question21:** Could you return to your discussion of what's wrong with present electromagnetics, quantum mechanics, and general relativity? Perhaps you could address them in order.

**A:** Okay. I've already stated the case for electromagnetics. Half of it – the really interesting part, the internal energetics – was discarded by Heaviside and Gibbs. By discarding the scalar component of the quaternion, they threw out the internalized EM energy of local spacetime and its communication with distant spatial points. Since the localized energy density of spacetime is essentially synonymous with gravitational potential, they threw out the ability to turn EM force field energy into gravitational potential energy. They threw out the interaction and entanglement of EM and gravitation, and wrote the special subset of Maxwell's theory that is restricted to the case where gravity and electromagnetics do not interact. As a subset, their work is perfectly okay. However, a priori you will never use their approach – nor the applied technology that follows its principles – to produce electrogravitation, overunity machines, tapping of vacuum energy sources, etc. You will never electrically change the inertia of a body at rest, structure the electric and magnetic flux itself, or achieve and utilize action at a distance. And your instruments developed in accord with the Heaviside/Gibbs EM principles will never detect or measure the mind, thought, and emotion – for those instruments a priori discard and ignore the internal energy arena where mind, thought, and emotion reside and function. And since the

externalized EM energy is scattering energy, energy once scattered will produce entropy – increased disorder, and only the positive flow of time. And that science and technology will never be able to translate EM energy into G- energy and vice versa. Every system built under its principles will be at extreme best a "break-even" system. It will never produce more energy out than is input in. It is at best a diode engineering technology.

**Question22:** What about present quantum mechanics?

**A:** *Quantum mechanics has a severe foundations problem the missing chaos, or in other words, the problem of the missing hidden order.* Let me explain how that came about. When physicists were constructing quantum mechanics, it was of necessity a statistical theory. They simply lifted the Gibbs thermodynamics statistics, and utilized it as the quantum statistics. Furthermore, Gibbs statistics were based on the theory of the random variable; that is, the variables were considered random. So, because random variable statistics were utilized, the QM postulate that "quantum change is statistical" was over-restricted to the special case of "quantum change not only is statistical, but also is random." The second case, "quantum change is statistical, but can contain hidden order and be nonrandom," was thus excluded a priori, simply because of the statistics utilized. Now the random change hypothesis is easily falsified, as follows. If you collect large numbers of random change, the resulting collection is still random. The next collection will not necessarily produce the same collection at all. (In fact, if it does, then this is prima facie evidence that the variables are not all random.)

What this means is that, *if quantum change is random, then collections of these random tiny changes could never integrate to provide us the ordered macroscopic universe we live in and observe.* You couldn't have a flower, or a tree, or anything, for that matter – just total randomness. Obviously that is not true, or else you and I do not exist and this macroworld does not exist.

*For integration of the statistical quantum changes to yield an ordered macroscopic universe, quantum change must contain hidden order.* That is, the variables must be chaotic, not random. If the changes are chaotic, then integration of them will see large scale forms emerge and stabilize – which is what we actually observe in physical reality.

So ironically, the biggest foundations problem in quantum mechanics today is the problem of the missing chaos! Try as they will, quantum physicists cannot find the missing hidden order, because they continue to use the Gibbs statistics that already excludes it. So they now know that somehow QM is wrong, and many of them fear that this most successful of physics theories will have to be completely redone.

[David Bohm](#), of course, long ago pointed out that *hidden variables could contain the hidden order.* Actually all of experimental physics is consistent with his hidden variable theory (HVT). Mainline QM theoreticians, however, shun hidden variables (and therefore hidden order). They avoid hidden variable theory by applying a kind of Occam's razor They say that Bohm's HVT seemingly predicts no new phenomena, so why adopt it at all, or even seriously investigate it? And since Bohm did not know how to actually engineer his hidden variables, nothing could be found experimentally with it that could not also be explained by the present QM.

Now this is where Whittaker's work – and Maxwell's original quaternion theory of EM – saves the day and decisively decides the issue. Whittaker's hidden variable theory is directly engineerable on the lab bench. It's testable, and when applied to quantum mechanics, it predicts hordes of new phenomena and effects, so it certainly gets by the old "Occam's razor" saw. When you apply Whittaker's approach to QM, again you provide testable internal EM bidirectional wave structures to the scalar potential, including the Schroedinger potential. Whittaker's work allows direct engineering of quantum change itself, and constitutes testable hidden order inside the "Gibbs statistics." In other words, application of the Whittaker work to QM produces a superset of QM, where the missing chaos is restored.

The postulate that "quantum change is statistical" now has three special cases, theoretically (1) the case where no internal order is present, and quantum change is random; (2) the case where some internal order, but not total, is present, and quantum change is already chaotic; and (3) the case where quantum change is perfectly engineered and hence perfectly ordered and deterministic.

Notice that, by adding the hidden order and the internalized EM energy, we've now extended both QM and EM, and unified the two on a common subset each is Whittaker-applied subset, which is the same subset shared by the two.

**Question23:** So how about general relativity? How does it fit in?

**A:** A similar thing also happened to general relativity, believe it or not! Einstein unwittingly restricted general relativity to a subset of the theory he intended to write. This over-restriction was again an indirect result of the fundamental Heaviside / Gibbs error in electromagnetics.

Unfortunately, Einstein's view of electromagnetics approximated the classical view. In classical EM theory, EM and gravitation were mutually exclusive. That is, the strong EM force was not usable as an agent to curve spacetime.

Therefore, as a curvature agent, Einstein only considered the weak gravitational force due to the attraction of mass. Now the G-force is far, far weaker than the E-force. For two electrons, for example, the attractive G-force between them is on the order of only  $10 \times 10^{-42}$  times as strong as the electrical repulsion. The G-force is very, very weak! If only the weak G-force is considered for curving spacetime, then there will never be an observable spacetime curvature, except in the immediate vicinity of a very large mass – such as on the surface of the sun or a star.

Einstein reasoned that the laboratory, and the observer/scientist and instrument, would never be on the surface of the sun or of a star. Therefore, he reasoned, the local spacetime -- where the lab, the observer, and the instruments are -- would never be curved. The local spacetime would always be flat.

Unfortunately, Einstein then made a fundamental error. He over generalized his thought examination. He stated one of his fundamental postulates of general relativity as "The local spacetime is always flat." This is overly restrictive, and did not follow from his thought process. His postulate can be more accurately stated as follows. "The local spacetime is always flat, whenever only the weak gravitational force is used for the agent of curvature and the local region of interest is not near a large collection of mass."



Notice the difference in the two statements of the postulate. Einstein's overstatement does not allow the far stronger EM force to be used for curvature. In effect, his own overstatement excluded electromagnetics from curvature unity with gravitation, in his own general relativity theory. Ironically Einstein then tried for the rest of his life to fit electromagnetics back in there – never realizing that his own too-strenuous statement of the flat local spacetime postulate doomed all his efforts to failure.

On the other hand, the corrected statement of his postulate admits the following corollary, "When a very strong force such as the electromagnetic force is used for the agent of curvature, the local spacetime may be curved, even though the local region of interest is not near a large collection of mass."

As can be seen, Einstein unwittingly wrote only a subset of his intended theory. Correct restatement of his overstated postulate of uncurved spacetime dramatically extends general relativity, and unites it with electromagnetics in a unified field theory.

Einstein's error also excluded the present general relativity from ever being a laboratory experimental science. If no detectable spacetime curvature is available locally, it obviously can't be measured in the lab. The vanishingly small local curvature waves following from mass- attraction gravitation are still predicted to be several orders of magnitude below the ability of the finest available detector. And that detector is a huge, monstrous, very costly thing. A priori, if the observer's local spacetime is always flat, there is no local experiment or local apparatus that involves or yields a curved local spacetime!

Unfortunately, Einstein's modern followers have raised Einsteinian general relativity to a dogma. They ruthlessly uphold the overstatement of the flat local spacetime postulate. Physicists who would dispute it – and quite a few would do so – are essentially barred from obtaining funding. If they persist with their heresy, their scientific stature is lost, and they are ostracized and cut off economically.

Simply read Santilli's book, if you wish a clear inside picture. *Contrary to the scientific propaganda, orthodox science is ruthless in defending its doctrine* against all would-be heretics. Much of science has been converted to a religion, instead of a science. Any person knowledgeable of scientific history can cite numerous examples of scientific suppression, character assassination, and essentially banishment. Gauss's nonlinear geometry, Wegener's continental drift, Mayer's discovery of the conservation of energy, Ovshinsky's amorphous semiconductors, physical therapy, the EKG, and the clinical use of hypnosis come readily to mind. Scientists form a distribution, just like any other group. Some of them are saints. Some of them are devils. The broad majority is neither, but is made up of just ordinary people like you and me, doing a specialized job. Every scientific model is known to be falsifiable and imperfect in the first place, if you believe Godel's theorem. Scientific method does not yield total truth anyway, by its own assertion; at best it yields a partial truth. By the Heisenberg uncertainty principle, every measurement distorts the entity with which the instrument interacts, changing what actually appears to be measured. Real scientists know that scientific models are progressive. For any model, sooner or later a better one, an improvement, will be found.

At any rate, when one looks at Maxwell's quaternion theory, the scalar component captured the ability to enfold and utilize the strong electromagnetic force to make a trapped potential filled with a structure of dynamic EM vector energy. However, if the translation components of the quaternion were zeroed,

the system of trapped spatiotemporal energy did not translate spatially, but only temporally. That, of course, is a scalar EM potential without an external force-field gradient. Since it is really trapped energy that gravitationally attracts other trapped energy, then all potentials are gravitational – as is well-known.

In fact, in 1968 Sakharov pointed out that gravitational field is not actually a primary field of nature. Instead, it's always a conglomerate produced from other fields. If his hypothesis is true, then to the first order gravity should be composed of electromagnetics, since it's the strongest force we normally will be able to meet or utilize.

Maxwell's quaternions and Whittaker's profound two papers directly show that. They also show how to engineer all this on the laboratory bench. So the Whittaker scalar EM approach is testable, which meets the major criterion for the difference between a hypothesis and a theory. Any decent university physics and/or electromagnetics staff who put their minds to it can test the approach.

**Question24:** Are there other physicists or scientists to whom we should also give credit for these things?

**A:** Yes. I'd like to mention that [Nikola Tesla](#) experimentally discovered the standing scalar EM potential wave on the night of July 3-4, 1899, in his Colorado Springs laboratory. He found it being radiated from a traveling thunderstorm. He recognized it as an "electromagnetic sound wave". This was four years before, unknown to the world, Whittaker wrote and published the precise theory for that same electrogravitational wave. Tesla always stated that, in the remarkable systems he later referred to, he was not using Hertzian waves. Rather, he pointed out, he was using EM sound waves – which must be modeled longitudinally. Today we know Tesla was correct – and all his detractors were wrong.

I'd also like to point out the patents and work of Hooper. Hooper seems to be the only physicist who ever methodically investigated EM stresses, structuring of those stresses, and the gravitational implications of those stresses in the laboratory.

I'd like to also point out Sakharov, and honor him for his clear statement that gravitation is not primary, but is a conglomerated field made from other fields. One should also point out the explosive progress made in stochastic electrodynamics as a result of Sakharov's suggestion, by Hal Puthoff and others. And one should definitely honor scientists such as Peter Graneau, who have struggled to point out the foundations problems of electromagnetics and experimentally back up their findings.

And finally I'd like to mention that I've been privileged to work with some extraordinary inventors. In deference to their requests, I will not give a straightforward list of them at this time. But a great deal of any insight I may have gained is in large part due to painstaking, maddening, persistent experiments they have done in the thousands. We will have more to say – and powerfully – about their actual contributions at a later date, hopefully later this year. Lots of other brilliant inventors – Moray and [Sweet](#) come readily to mind – have also struggled in this field and produced astonishing and unrewarded results.

**Question25:** Can you spell out again what effect excluding the internal EM energy had on physics, as simply as possible, and how that is related to vectors?

**A:** The thing that casting out the internal order and internal structure of the local ST does *is to remove any consideration of hidden, deterministic variables that could be manipulated to create and control quantum change itself.*

As can be seen, then, in the physical world scalar quantities are very often really zero vector systems, where the "scalar" or motionless system is actually filled with hosts of smaller "vector" things in violent motion. We have to be very careful, therefore, when we apply mathematics (which does not decompose fundamental scalars into vectors, or identify them as vector zeros) to a physical situation. To use an extreme example, two elephants pushing strongly head-on against each other may produce a "two-elephant" system of opposing forces (vectors), where the system is stationary. The system is thus a zero resultant vector system, whose motion is represented by a vector zero. The same would be true for two fleas pushing against each other and not moving as a system; the system would be a zero resultant vector system, whose motion is represented by a vector zero.

And here's where the mathematics betrays us, if accepted unquestioningly. In vector analysis, all vector zeros are identical. Here we are saying that the translatory motions of the flea system and the elephant system are the same. That's true, but there's a whale of a lot of difference in the two systems that must be accounted for physically! If you don't believe that, put yourself in between the two pushing elephants, and see if that's the same as being between the two pushing fleas! You'll certainly notice a lot more stress on you from the elephants than from the fleas.

That illustrates *a fundamental problem with vector analysis*. In the concepts of the math itself, one conceives a "vector space" as a sort of "place where one can put vectors." Further, no matter how many vectors we put in there, or how they interact, the vector space itself is never under any stress. In other words, in that space, elephant-pushing and flea-pushing are identically the same. And that's the problem. When vector analysis is applied to physical situations, imbedded inside the mathematics of vector analysis itself is the absolute discarding of the stress of local space or spacetime, resulting from the interaction of vectors representing interacting motional physical quantities.

Now in quaternions, that is not the case. Quaternions that interact capture this "local stress of spacetime" and "locally trapped energy of spacetime" in the scalar component, inside it. When the motional parts of interacting quaternions produce a motionless or translationless state for the interacting parts as a system, the stress, energy, and exact geometric patterning of the interactants that are now locally trapped in spacetime is gathered in and accounted for. The motional aspect may go to zero, but the scalar aspect will capture not only magnitude but internal motion and the exact dynamic structure of that internal motion.

Quaternions already incorporate a beautiful hidden variable theory, analogous to Bohm's beautiful work. They incorporate two channels the external energy channel (which is addressed, for example, by classical Heaviside / Gibbs EM theory), and also a hidden internal energy channel (which is not addressed by Heaviside / Gibbs). Quaternions also incorporate *hyperspatial* aspects, since they are an extension to complex number theory. Notice that Heaviside had to stick back in complex numbers, to get his spatial vectors to unite magnetism and electricity. So he essentially added one extra dimension,

typified by the first hypernumber, the square root of minus one. Quaternions already had that in there, and a lot more that Heaviside threw out.

**Question26:** Would you sum up how general relativity, electromagnetics, and quantum mechanics are unified by the Whittaker approach?

**A:** Yes. Applying Whittaker's work to each of the three, a superset of it is produced. The new superset has two subsets the present discipline and the extension containing internal EM energy and hidden variable theory. Since all three extensions are actually the same thing, then all three supersets superpose on the common extension set. Each of the present three disciplines is revealed to be a special case, which unfortunately omitted the unifying extension set. It's like a topless cardboard box that you've cut the bottom out and outfolded the sides separately. To be joined, those separate sides need the bottom of the box. Whittaker provides the bottom. And it's testable.

**Question27:** Are there any other fundamental things from all this that you'd like to point out, that you haven't mentioned, that follow from the eventual development of this new physics?

**A:** Several. Please notice that Whittaker's work and the characteristics of Maxwell's scalar component of the quaternion allow the *direct electromagnetic engineering of the vacuum*. In fact, they allow the actually structuring and variation of massless electric charge flux itself. Now, in the new approach, one electron can be quite different from another, because its electric charge flux can be varied and patterned. Not only can its overall electrical charge be varied, but its charge can be dynamically structured. Now the charge of an electron or other fundamental particle can vary, and the charge flux of a single particle (or a group) can be spatially structured – or activated.

The activation concept, for example, allows an immediate and testable explanation of the mechanism by means of which [homeopathy](#) works. Recall [what I said about water structuring and hydrancephaly](#). A chemical compound has a deterministic infolded EM Whittaker structure. If you make a solution of the compound, you change this hidden internal energy structure of the fluid. *If you then get rid of the physical carrier – the mass of the original compound – and just leave the inner energy structure for that compound, you have homeopathy.* Chemistry is totally due to charge and charge distribution. *In homeopathy you're retaining the charge template in the potential, and that affects charges in the treated body just like the actual medication. In fact better, because you now do not have the "physical residue" to worry with, but do things directly.* These new concepts are profound and controversial changes to the present foundations assumptions of physics and biology.

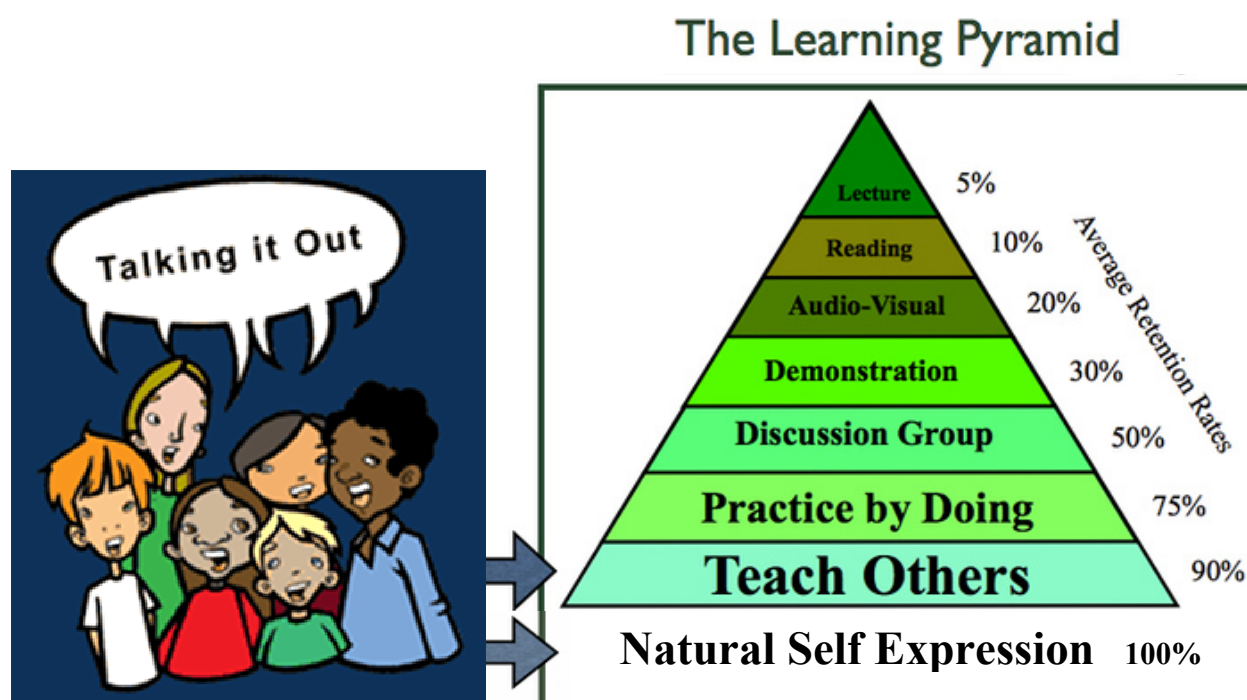
In the new approach, you can't just automatically apply random variable statistics. You have to apply chaos. In structuring the vacuum's virtual photon exchange with the mass of a charged particle, we have moved to a completely new and much more fundamental level of engineering. Now the massless virtual particle charge flux can be activated with a particular dynamic structure – a vacuum engine, if you will – to perform a special job. Or we can activate a local spacetime itself, curving it and internally structuring that curvature to our will. That locally curved spacetime then becomes a continuing, inexhaustible source of a specialized vacuum engine or engines. We can tailor the local vacuum so as to be able to violate any and all of the present conservation laws, not just two out of three as the present CPT theorem permits. Literally we can use the vacuum's incredibly powerful flux

to produce localized vacuum engines. We can reach directly into the atomic nuclei with magic, gentle, accurately controlled fingers.

We can for the first time begin to do actual tailoring and *engineering of the nucleus* itself. We can further directly collect and integrate virtual state energy forms, which in QM are called "ghost forms." Literally, eventually anything at all can be materialized and brought into physical reality, or dematerialized so as to disappear from physical reality. And we shall be able to engineer and change the local laws of nature, since we can directly engineer and control the Schroedinger equation, the quantum potentials, and the entire local vacuum potential in all its partial potential parts.

Whether we're ready or not, God has now seen fit to hand to humankind the *ability to engineer its own physical reality and its own destiny*. We can make of the new engineered reality a heaven or a hell. Whichever we do, we will reap the benefits or face the consequences. It would indeed be wonderful if, for the first time, we could develop this powerful new tool to save humankind rather than destroy it.

\*\*\*\*\*end of interview\*\*\*\*\*



<http://www.pascashealth.com/index.php/library.html>

## Library Downloads – Pascas Papers

All papers may be freely shared. The fortnightly mailouts are free to all, to be added into the mailout list, kindly provide your email address.

[info@pascashealth.com](mailto:info@pascashealth.com)



**Feelings** *first*

**LIVE FEELINGS FIRST**

**FEELINGS FIRST For Kids**

By living true to ourselves, true to our feelings, we are living true to God. It's that simple.

**FEELING HEALING versus other EMOTIONAL PROCESSING METHODS:**

Thursday, 13 July 2017

Hi James and Nanna Beth (questions from John)

The question to address is:

What is different with the outlines of the Feeling Healing process as against the numerous other emotional processing methods?

Nanna Beth, 3<sup>rd</sup> Celestial Heaven: The difference is the focus on the truth: uncovering the truth of yourself through your feelings – uncovering the truth of your feelings. It's a rebellion against the Truth, so if one doesn't want the truth, nothing will happen, one will only move deeper into one's rebellion against it.

And because the focus is on the Truth, so one can use it all the way to uncover the Whole Truth of Oneself. And there is nothing else teaching that.

All the other systems that involve looking to feelings to some degree fail to understand the deeper significance of wanting the Truth. Many people uncover some truth of themselves through their feelings, but mostly they end the process because they don't want to follow it right the way through, which means they only want to heal some momentary pain, and once that is done, are usually happy to continue on in their untrue state.

And because one is wanting to uncover the whole truth of oneself, then it becomes a full spiritual experience, and one that can be done by oneself, so without needing help from another, although at times help is sought and used. So the Feeling Healing embraces Healing the whole seven Mansion Worlds worth of self- and feeling-denial, which is the complete Rebellion and Default. Other systems might only work at some aspect of it, limiting the ascent of truth through all the Mansion Worlds.

And basically no one understands the absolute depth of the problem within themselves, which is only borne out by people and spirits doing their whole Healing. Much of the current psychological understanding falls well short of understanding the depths that are involved because they don't include the overall problems brought about by the Rebellion and Default. You have to understand you are rebelling against yourself: the truth of yourself, and so against your own soul; which is then the truth of God, so the Mother and Father; and that also includes the truth of Mary and Jesus. So at some point you have to rectify all those relationships, which you can't do unless you understand the bigger spiritual picture. And so that's what James has revealed, taking all Marion has said, all the books offer, adding his own stuff, and putting it all together as a way of life, a spirituality that can be lived, and one the initially focuses on Healing oneself of all one's wrongness.

**Why have all other methods of releasing and delving into emotions not been successful?**

Nanna Beth: Because they don't understand the scope of the problem, as I said above. They are not approaching it from the point of view of understanding the nature of one's Repressed Childhood state, the extent of that; and then how one needs to allow oneself to feel all the bad feelings, not reject them; and then bring them out, which is the releasing of them; all whilst wanting to know the truth of them –

the truth of what you are feeling. And that truth is what needs to come up within you so you can heal your will and become a truly functioning person, fully self-expressive, self-loving, and growing continually in truth.

All the other systems work within the control of the mind, so once the therapy ends, the mind regains control albeit in a different way. Only the Feeling Healing and Soul Healing with the Divine Love, seeks to entirely break the control of the mind over one's feelings.

### Why haven't other methods been going deep enough?

Because people are basically afraid to push into such early childhood trauma without understanding where they are going or what it's all about. The leap of faith is too great, as it would mean they would have to rise above and conquer the Rebellion and Default within themselves, and that's simply too much to ask. The negative truth-denying systems within everyone are too deeply entrenched.

However the spiritual structure outlined by James provides a structure that allows you to deal with the Rebellion and Default, allowing you to maintain your faith, and evolve it, as you progress in your growth of truth – it gives one a picture to work with. Very few people, and possibly only Marion in fact, are able to press on into such dark depths without any structure and with only a faith that it's what she and God want to do.

I (Beth) couldn't have done it Marion's way John, I wouldn't have allowed myself to feel such pain, I needed to understand the bigger-picture reasons as to why I was in such pain, and be given the understanding that if I kept at it, one day it would end. Marion doesn't know it will end, she just keeps going one bad feeling at a time, which requires a tremendous amount of faith and over so many years and through so many inner obstacles; and still she doesn't know if it will end, but as she says, there is nothing else she can do other than keep going because she tried everything else. And she doesn't want to let her mind come in, only wanting to stay true to her feelings, so she doesn't want to know about the bigger picture even though she has worked it out along the way for herself and for James to understand which he's worked into his books.

So the spiritual aspect or approach James has provided, even if it's not actually talked about; the simplicity of honouring your feelings, and in particular your bad ones, then by accepting them you allow them to have their say, so you express them, all whilst longing for the truth, includes all one needs to know. And so by doing that, one will be able to fully Heal themselves working it out along the way for themselves; and even if they don't understand it, will be living the highest truest spiritual life one can live in one's wrongness, which in time will lead to one's Healing of one's rebellion and default.

On the surface of it, what James has related seems overly simple, but doing it yourself, and see what happens and what results; and that will take one deep into oneself uncovering the whole truth of oneself.

Many will consider that what they have been doing is adequate – why are they wrong in their understandings?



Nanna Beth: Because they don't understand what it's really all about. They don't understand the mind is in control of their true feelings, and that needs to be stopped. They don't understand the significance of their rebellion against the Truth, and how that happened by default. They don't understand that it's about uncovering the whole truth of yourself through your feelings, all your feelings, but focusing to begin with on your bad ones because they are what most people don't want to see. Everyone else sees it that they are doing this feeling type healing to make themselves better, to rid themselves of their pain and trauma, so instead of taking a pill to take the pain away, they are using some sort of emotional clearing system. But that is all still to take the pain away, to fix themselves, to heal themselves, to effectively take a pill so it all goes away, just like what the 'Divine Love people' hope the Divine Love will do for them, but it's not to uncover the whole truth of themselves. We have to see the truth of our pain, why we're in it, how it all came about, so what really went on in all our early relationships. It's not about doing anything that just takes all our suffering away. We have suffered for valid reasons, which all have to come to light. And so only emotional and feeling accepting systems to help one see such truth of one's pain and suffering are of any worth. And unless you uncover the whole truth of yourself, you'll never set yourself free of your rebellion and default, of all your soul pain. And the truth means to see the whole truth of why you feel unloved, how unloving your early relationships were, why you don't love yourself, why you are unloving, why you are evil and wrong, which basically no one wants to face.

So to summarise: We all have to see the truth of our unlovingness. We can't avoid it – deny it. We have to face it and feel all it makes us feel. And all those bad feelings lead us into the truth of it. So we have to understand – bring to light through our feelings – all the truth of our unloved, negative, evil, wrong state. And then once we've done that, we can be free of it. So until you uncover and feel the whole truth of it, it will never leave you, you'll remain in rebellion against yourself, you'll continue to be unloving.

I have considered with James, that Marion and he actually represent the two extremes of what is involved in soul-healing. I have found one such writing by James, back in 2006, that points to this. My feeling is that their two extreme ends of the experience matrix makes them perfect for bringing together the understandings that will benefit all people, no matter what their circumstances maybe.

Nanna Beth: If we accept that Marion and James are the Avonal Pair here to reveal the essential truths to humanity about how people can Heal themselves of their rebellion against the truth of themselves, then what you deduce is correct, for they have between them had to take on every negative aspect of the Rebellion and Default and so Heal it, which is healing all the circuits on a technical level, thereby opening the way for humanity to follow.

So if you consider this John, it is pretty amazing that two people can take on all the denial humanity is in, approaching it from opposite ends, which equates to the effects of the Default of Eve and Adam (following on from the Rebellion), and that such wrongness can be concentrated into two family units, and mostly in two parent pairs (being Marion's parents and James' parents). And so what is the likelihood of that? And then for them to live in the same city being the first children of such 'bloodlines of denial', and meet each other, and at a time needed to give themselves all the time to systematically work their way laboriously up through all the negative mind and will circuits. So to be subjected to so much woe, and to be able to keep going with no help from anyone other than each

other, and a little backup from the spirits and the Mother and Father on James' side, yet with that involvement opening up even more messed up and corrupted mind circuits he's had to work his way through.

So if it is true they are the Avonal Pair, it shows us all just how incredible the soul of the Avonals are, to be able to go into such corruption, taking it all on, and then working it all through and Healing themselves of it, all basically without any real help from anyone, so just on faith and pure longing for the truth.

And should they reach the end of their Healing before they die, and should the truth then be fully declared that they are the Avonal Pair, even going against all what The Urantia Book (TUB) says, they having to uncover the truth in all things whilst rejecting the untruth such as in TUB and Padgett Messages (PM), with nothing having been straightforward and of any real help, then it will be cause for major celebration.

And it's what we are preparing for, what you are too John, to see if Marion and James are indeed the Pair, and then to give them all the support they will need to do whatever it is they are to do in the public sense. This is all their private work so far, of which you and I have become substantial parts of, the doing of their Healing preparing themselves for when they are Healed.

And if it turns out they are not an Avonal Pair, they are only just a pair of ordinary mortals who've somehow managed to keep going, dealing with all their pain, longing for and bringing to light all the truth of it, then they will be the most extraordinary mortal pair because they will have been the one's who broke the back of the Rebellion and Default. So either way you look at it, it will be quite an achievement.

And so we are all waiting to see if the theory is realised by such Avonal-truth awakening in their soul at some point, for then we will all know it will be true, just as they too will know. For now Marion doesn't contend with any of it, and James only on a mental level because of what the Melchizedeks told him years ago, but it all has to come to them through their feelings like all truth, which will only happen once they've fully Healed themselves or toward the end of their Healing. Because in the meantime, whilst they are still in their wrongness and denial of truth, part of that denial is denying the truth that they are Avonals. And again the whole Avonal business has been yet more problems and negative circuits James has had to personally work through, whereas Marion has solely focused on only dealing with her feelings, not having to contend with all the other mind stuff.

James, when you feel up to it, may I have your observations please? And Nanna Beth, your angelic eye on this subject would be most helpful, if you please?

These two subjects are possibly leading to the crux of what we are sharing through the Pascas Papers. I now see that these 'colourful' handouts are essential in introducing and supporting the major publications of James Moncrief and James Padgett.

Nanna Beth: The handouts will help introduce people to such writings. But what I want you to understand John, is really it's James – because of his writings (and Marion, because she is leading them both in it all) that is what's most important. The Padgett Messages (PM) are really to be

included in James' work, which he does, by taking the crucial parts and integrating them into his work – with the most important truth being that about longing for the Divine Love. So really the PM are secondary.

As you understand, the Padgett Messages can't heal you. The Divine Love is about immortality of the soul and becoming divine, it's not about ending your rebellion against the Truth. And ending the rebellion needs to come first: the Truth then the Love, then the Divine Love can be introduced, even though of course the Divine Love can be introduced at any time.

So really one need only work with James' (and Marion's) work, which includes longing for the Divine Love. People are to look to them first, and then later to Mary and Jesus. To put Mary and Jesus ahead of Marion and James can cause you problems because you will overlook what Marion and James are revealing. But as Mary and Jesus are known and with such importance placed on Jesus, and now with the PM and the Divine Love, so it's all the more confusing. Even added to by James having written focusing on and making Mary and Jesus more important than himself and Marion.

But as I said, it's Marion and James first, then Mary and Jesus and the Divine Love. And Marion and James are more than capable of also introducing the Divine Love and the truth of Mary and Jesus, which they would have done had Mary and Jesus not come to Earth. So really Mary and Jesus are not needed, and as I said, can get in the way, causing people to focus too heavily on them whilst missing the more essential truths of having to do your Healing by looking for the truth of your feelings (the 'Divine Love people' being examples of this). However with Mary, and Jesus in the PM, being so dominant, it is all just more of the confusion and part of the rebellion. And at the same time I don't want to downplay Mary and Jesus and lead people to believe they are not as important as Marion and James, for they are most important, and much more important being the Creator Pair of Nebadon, and Marion and James would rather not exist than have people think they were more important than Mary and Jesus; but as you understand, I'm just trying to put the revelation of truth into context, because it's all being revealed round the wrong way.

People and spirits were given the opportunity to deny Mary and Jesus whilst they were on Earth, taking the Rebellion deeper; and then to further deny them right the way through their age; and now further still by including the PM. And now people will be given the added opportunity of denying Marion and James, which all ends up being one huge mess. And one in which only Marion and James can unravel. For I am only saying to you now what James has already written and what Marion and he have talked about. I wouldn't dream of taking anything away from them, and it's not my place to do so.

Firstly, consider discovering the truth of your emotional pain and injuries.  
 Secondly, consider longing for our Heavenly Parents' Love as you progress with your healing.  
 Primary and most important readings are the writings of James Moncrief.  
 Then consider the Padgett Messages, and then The Urantia Book.

Love from us all over here – your Nanna Beth.

## WE ALL ARE BEING GUIDED HOME:

We need the Spirits of Truth of the Avonal Pair to Heal ourselves; then once Healed, (and for support (overshadowing) as well through your Healing), we need the Creator Pair, Mary Magdalene and Jesus' Spirits of Truth to see us through the Celestial spheres, while at all times embracing our Heavenly Mother and Father.

Until Mary and Jesus died and liberated their Spirits of Truth, no one from any of the worlds could leave Nebadon, because no one knew the way to do so. Nebadon is our local universe containing some 3.8 million inhabited physical worlds and their associated spirit worlds.

When we embrace the truths Mary and Jesus are revealing, and start to do our Feeling Healing, or with Divine Love, Soul Healing, we are then freeing ourselves up from our parental and self control.

Thus our journey to Paradise, to the home of our Heavenly Parents, is of our choosing as to when we progress, however, there is only one way:

**HUM:** Humanity is to ascend. We are self contained. Our soul is always in truth and perfect at all times. **By living true to ourself, true to our feelings, we are living true to God. It's that simple.**

We are to recognise that being engaged and dominated by our mind is the wrong way for us to evolve and grow in truth. We are to discard the mind enslavement that has been imposed upon as by all of our parents. We are to express our feelings, both good and bad and free ourselves of the indoctrination that humanity has embraced worldwide.

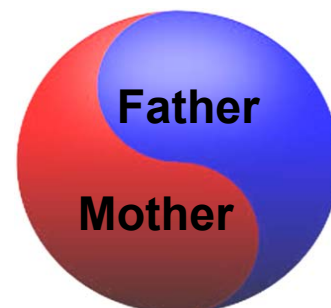
Live true to your feelings, and you ARE living true, not only to your own soul, but also true to God's soul. So doing your Healing by honouring all your feelings, IS living the will of God. And being fully Healed, IS living even more truly the Will of our Mother and Father.

**AVO:** We are to embrace the truths and guidance of the Avonal Pair through their Spirits of Truth. It is the Avonal Pair's guidance that will lead us through our Feeling Healing, and with Divine Love, we will be able to ascend through the 7 spirit Mansion Worlds and enter the Celestial Heavens where we also interact with other world's spirits.

**J&M:** We are also to embrace the truths and guidance of the Paradise Pair, Mary and Jesus, who will then lead us through the 3 Celestial Heavens that are aligned with Earth, and then further on through Nebadon where we will then depart beyond on towards Paradise.

**M&F:** Beyond the universal zone of Nebadon, we will be guided by our Heavenly Mother and Father onwards through the universes to Paradise where we will be welcomed by them, home for us all, as we are all Children of God.

# GOD



M&F



J&M



AVO

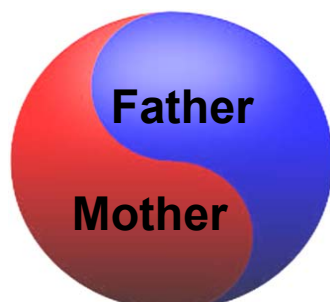


HUM

**WE ARE Children of God**

**WE ALL ARE BEING GUIDED HOME – NOW, HOW TO COMMENCE THE JOURNEY:**

**GOD**



**M&F**

For 200,000 years, we have been misled into embracing our mind's distortion of wisdom and truth. All such traditional understandings only lead us in the wrong direction, from which we must turn back from. Our soul based feelings are always in truth. Our minds are to follow our soul based truths and feelings, not the other way round, as we have been brought up to embrace.

We are to connect with our deeper repressed feelings.  
We are to long for the truth of what we are feeling.  
We are to live true to our selves; by living true to our feelings.

Use your surface day-to-day feelings to connect with your deeper repressed feelings. Express your surface feelings and your deeper repressed feelings to uncover the truth of yourself.



**J&M**

We all have feelings which we communicate and share with each other. And we all have deeper buried and hidden repressed feelings. Feelings from our early childhood we felt, yet weren't allowed to express. These feelings are still within us, waiting to have their say. These feelings, because they are repressed, cause us all our problems.

And as we look to uncover, bring out and accept these deeper feelings, so we're taken into new ways of looking at ourselves, our feelings, and our life. We're setting ourselves free of the controlling patterns that govern our unloving behaviour.

In this way, we progressively begin to express the personality that our Heavenly Mother and Father gave us, not the one imposed upon us by our physical parents and carers. We are to be our true and real selves.



**By living true to ourself, true to our feelings, we are living true to God. It's that simple.**

**AVO**



**HUM**

As we, humanity, long for the truth of our feelings, we can also be assisted by the Spirits of Truth of the Avonal Pair who are our spiritual teachers for Earth over this coming 1,000 years, to assist us through the Great U-Turn, away from mind dominance to being soul based feeling lead. They will assist us through the seven levels of the spirit Mansion Worlds.

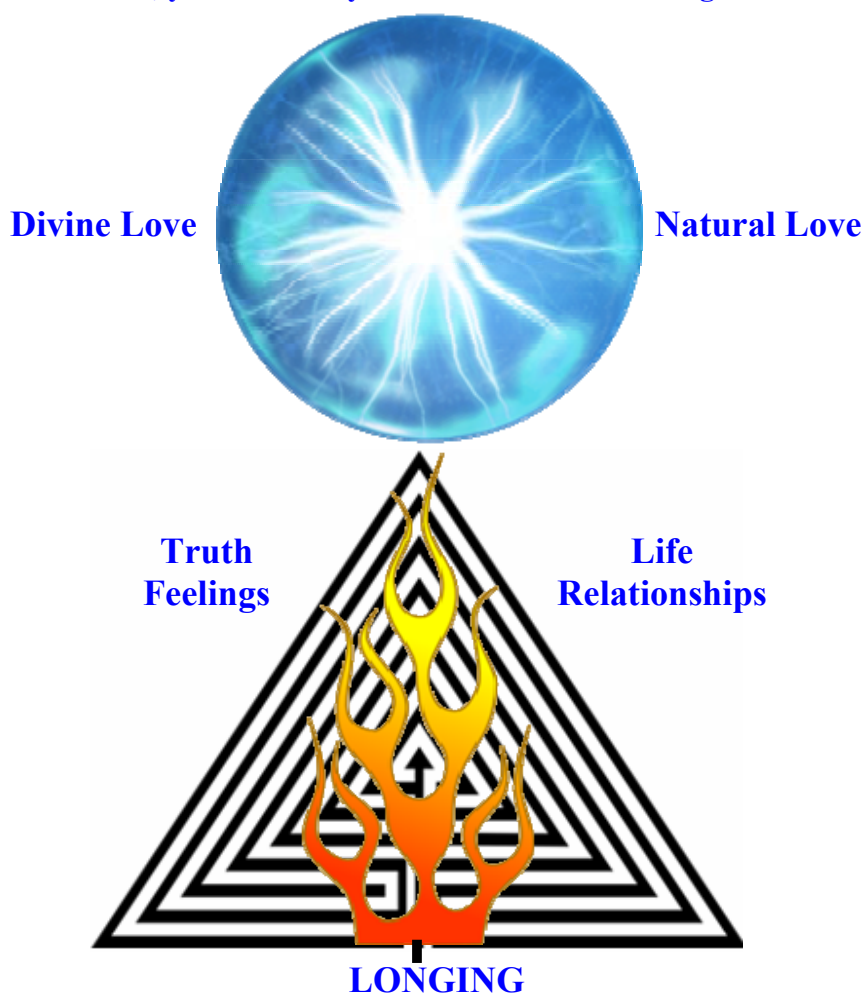
Then the Creator Pair, Jesus and Mary, will lead us through Nebadon and into the greater universe. Then our Heavenly Mother and Father lead us home to Paradise.

**WE ARE Children of God**

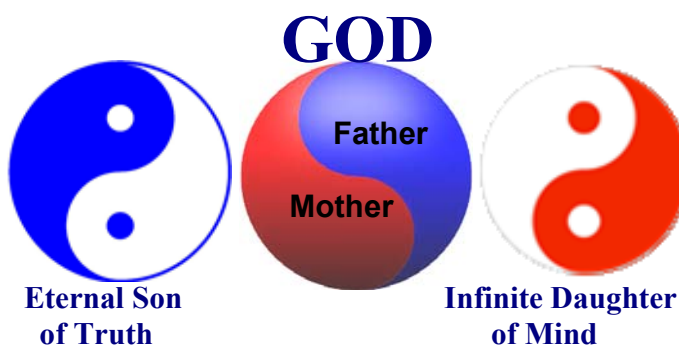
Collectively, should we embrace them all, as we are to, then our pathway home is a journey in the hands of the Spirits of Truth of the Avonal and Paradise Pairs overseen by our Heavenly Parents.

**HOW TO GET TO PARADISE:**

Long for the Divine Love  
 Long for the Truth  
 Long for the truth of your feelings  
 Don't deny any feelings: accept, express and want to know the truth of them  
 Know your feelings are the key; your feelings are the Way  
 Want to end your falseness and being untrue  
 Want to understand the truth of your early life  
 Use your surface feelings to move deeper into yourself, bringing up your repressed feelings  
 Want and long to know the whole truth of yourself  
 Want to do it all with God, your Heavenly Mother and Father – long to Them for help.

**The Key**

Our longing drives our life. We long with feelings. We can wish for things using our mind, yet long for things with our heart. These things in the pyramid are what to long for. Longing for them, when the longing comes naturally. Longing because you feel you really want them. Long to be true with all your heart. Long to live true to your feelings. Long to understand the whole truth of yourself.



PARADISE TRINITY:

1. **Our MOTHER and FATHER (God) (MF) – Divine Love**  
SOUL (God) – One SOUL that is expressing its two PERSONALITIES, our Heavenly Mother and Heavenly Father (Soulmates)
2. **ETERNAL SON (ES) – Divine Truth**
3. **INFINITE DAUGHTER (ID) – Divine Mind**

Then: The Second and Third Persons of the Paradise Trinity (ES and ID) are stepped down to the local universe trinity (Mary and Jesus, Divine Minister (DM), and her Holy Spirit.

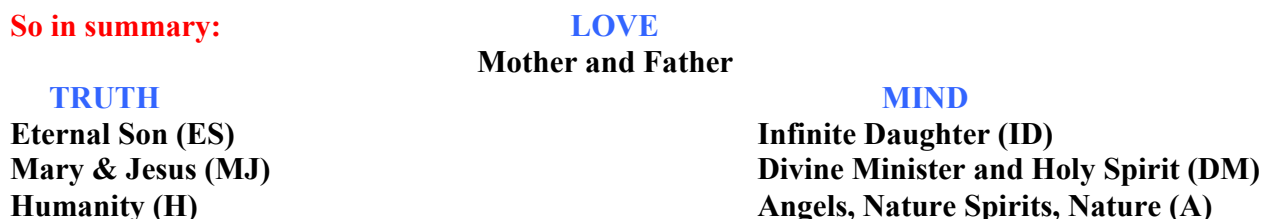
The LOCAL UNIVERSE TRINITY:

1. **MARY M and JESUS (MF) – Love – the Living Truth**
2. **DIVINE MINISTER (ID) – Mind (and her Holy Spirit)**
3. **HUMANITY – Natural love, sons and Daughters – Truth, and our Angels – Mind**

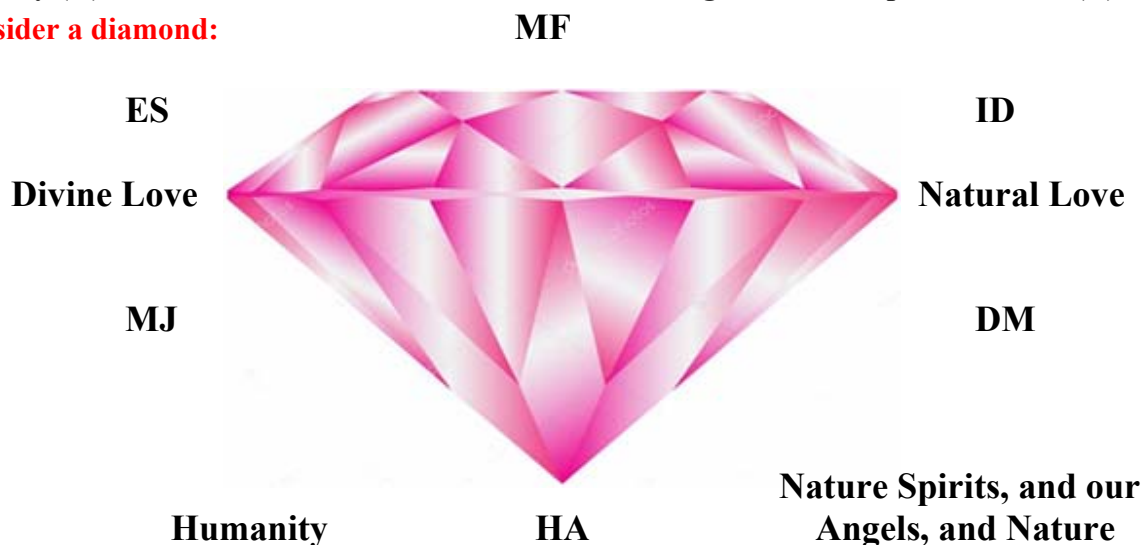
PLANETS that engage in REBELLION:

1. **AVONAL SOULMATE PAIR – the Feeling Healing process – incarnate**
2. **DAYNAL – TEACHER PAIRS – they do not incarnate**

**So in summary:**



**Consider a diamond:**



# Mother and Father Heavenly Parents

Creator Son & Daughter  
Jesus and Mary

Avonals  
as soulmate pairs

Trinity Teachers  
as soulmate pairs

Melchizedeks – who have taken over from the Caligastians and Daligastians being also all as soulmate pairs.

Mortal Souls – human beings who individualise on Earth, then progress through the spirit Mansion Worlds, then into the Celestial Heavens, and beyond.

Mortal Souls – also being ascending spirits, upon completing their Soul Healing, join with their soulmate, then join their soul group of 24 mortal spirits, being 12 soul pairs. It is only as a soulgroup that anyone can progress beyond Nebadon.

The Paradise Pairs are all ONLY concerned with the SPIRITUAL wellbeing and upliftment of the planets and local universe. Currently to do with Earth:

Mary and Jesus – spiritual wellbeing and upliftment of the whole of Nebadon region.

Avonal Pair – Daynal pairs (Trinity Teacher Daughters and Sons) – Spiritual wellbeing and upliftment of individual planets and their associated Mansion Worlds.

The Local universal Sons and Daughters are all about the running of the worlds under their jurisdiction, and ensuring the higher spiritual elements can be employed, or sent astray, as in our cases through the Rebellion and Default.

Lanonandeks – Melchizedeks (and others, such as Life Carriers and Eve and Adam).

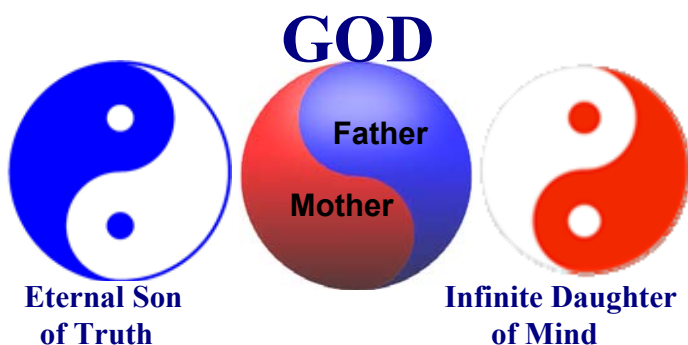
As the Lanonandeks all rebelled – the Lucifers, Satans, Caligastias and Daligastias soulmate pairs – so the Melchizedeks have taken over their roles, as well as doing their own.

So the Melchizedeks are the governors, overseers, the administrators and advisors and so on for Earth; they are the ‘controllers’, and they will instigate all that needs to be done to do with the ending of the Rebellion and Default. And they will enlist the willing help of ascending mortal pairs, so the mortal Celestials spirits (soulmates when available, and others waiting to unite with their partner), and at times mortal spirits in the Divine Love Healing Mansion Worlds. And the angels help all of us.

Currently the whole of Creation exists for the ascension of mortal souls from their earth planets to Paradise. It’s all one vast Grand Ascension Scheme. With all the higher and lower spiritual Daughters and Sons, together with all the many different angels and other universal spirit personalities, and even including nature and our very own pets, assisting women and men with their Ascension Journey. It being: and Ascension of Truth. Everything we do is done to help us grow in truth. (Only everything we do in our negative state is to deny ourselves our truth from our feelings, which is why we have to do our Healing.) All women and men are ascending (or growing) in truth through their experiences. And as we grow in truth by looking to our feelings to show us that truth, so we’re ascending, moving inwards and upwards through all the worlds and spheres of the Grand Universe to one day arrive on Paradise and meet our Heavenly Parents. God is providing us, Their children, with this spiritual journey called our Ascension of Truth. And by living true to our feelings, so we are progressing on our true Spiritual Path – our Ascension Path.







**CREATION of SOUL and SPIRIT:**

God is *The Paradise Trinity* — the eternal Deity union of the Personalities: the Universal Mother and Father; the Eternal Son of Truth; and the Infinite Daughter Spirit of Mind.

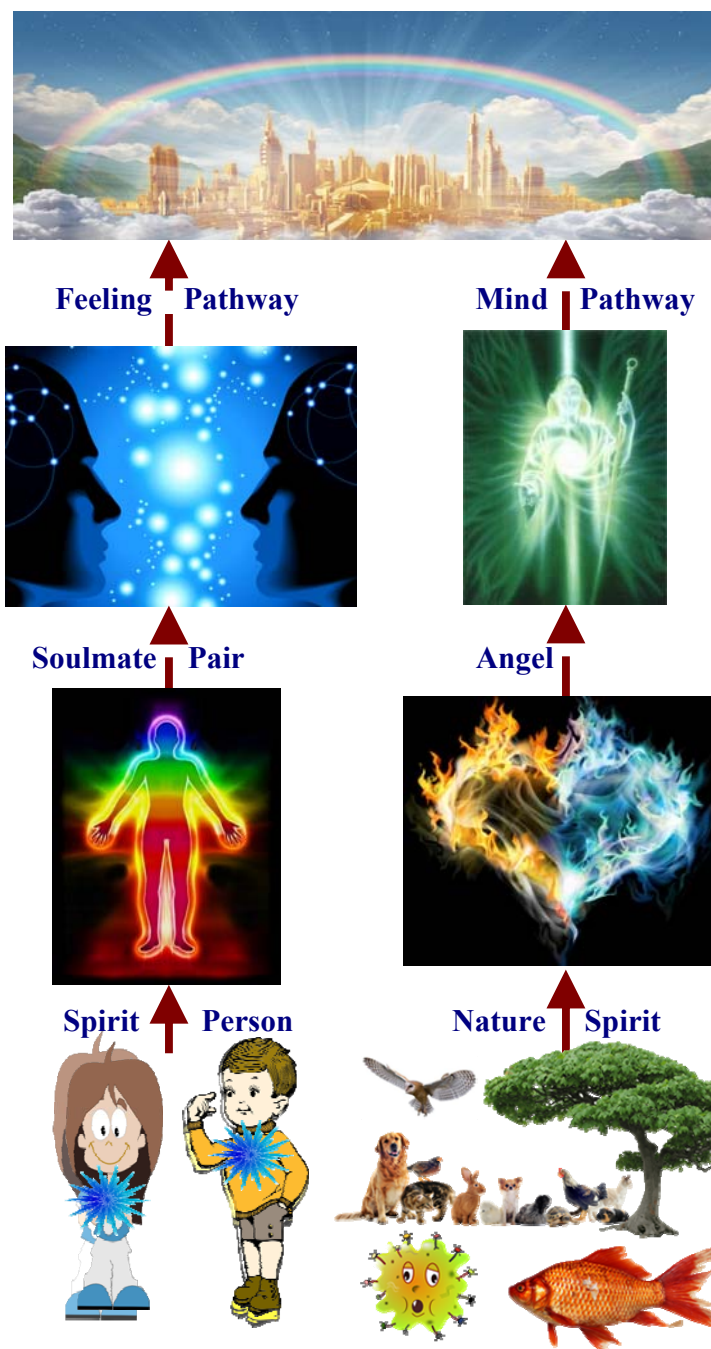
The soul of each human personality (sons and daughters of truth) is existential, driving our personality expression in the experiential. The soul of each human finds truth by embracing one’s feelings and longing for the truth of them. We are to attain the Eternal Son of Truth. We are a creation of Truth.

The soul of angels is experiential, evolving through their experience by continually progressing in mind development. Angels are to attain the Infinite Daughter (Spirit) of Mind. Angels are a creation of Mind. Our soul is duplex (we have a soulmate) and is created by our Heavenly Parents. Through our Feeling Healing we perfect ourselves enabling the union with our soulmate, as we progress in truth up through the Mansion Worlds, celestial heavens and all the way to Paradise.

The soul of angels is also duplex, yet of the mind, and they progress in mind evolution to Paradise. Animals, plants and nature spirits are also creations of Mind.

Neither we nor animals reincarnate. We never die; upon death, we move into the spirit Mansion Worlds on our journey to Paradise. When animals and plants die, be they the tiny microbe to the mighty elephants of the land and the whales of the ocean, their spirit energy returns to the Spirit Collective Energy. And from this energy are drawn other animals and the nature spirits, who then in turn move onto becoming angels through increasing mind experience.

A nature spirit is an angel in waiting.



## Feelings First Spirituality The New Way

**Feelings First**  
**FF**  
**Feeling Free**

The New Way, Feelings First Spirituality  
Learn to live with God through your Feelings

Accept, express and long for the truth of your feelings

Be free in your feelings  
Free your feelings from your mind's control  
Live true to your feelings; your feelings are your true self  
Live true to yourself through your feelings



Live true to yourself by living true to your feelings.  
Long for the truth of your feelings.

Accept / Express / Bring out ALL of your good, and most importantly,  
BAD feelings.  
Want to understand why you're feeling them.  
Use your surface feelings to take you deeper into your repressed and  
hidden feelings.



The Feeling Way is the True Way.  
Your feelings are your spiritual guide.  
Your feelings will take you to God.



Your feelings will show you the truth of your relationships, including your relationship with God; and if anything is wrong, untrue and unloving, then why it is.

Our feelings are sacrosanct and we should respect them accordingly. And we should NEVER block them out, ignore, override, banish, deny or reject them, because if we do, we're only doing that to ourselves, as Our Feelings Are Our Self.

Our feelings are the gateway to our soul. Our feelings are the closest we can get to our soul. Knowing the truth of our feelings is knowing the truth of our soul, and knowing the truth of God.

Feelings First Spirituality is the True path for humanity.

It embraces all people.

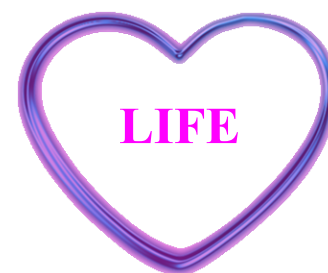
It completely unifies the world.

Everyone can relate to everyone else through their feelings.

And we can all live the truth that comes from our feelings, all sharing the same truths as we express and have the same feelings.

No one need be left out; no one is more special than anyone else – we are all united in Truth through our feelings.

So with and through our truth we live our lives, therefore without the need of any man-made mind-laws, rules and restrictions that limit self-expression as inspired by our feelings.



The New Way, Feelings First Spirituality is what is to replace all man-made, mind-contrived religions that so many people have enslaved themselves to. The New Way, Feelings First Spirituality will set us free of all that control, ending the Rebellion and Default within ourselves as we do our Feeling-Healing, and ending such control and spiritual stagnation in the world.

Bring on the End Times – get it over and done with! Let's all see that Jesus is not going to come again, that Prophecy has failed all the mind-controlled platforms. Allow such false systems of belief to die their long-awaited natural death, they've overstayed their welcome, it's now time they fade away. So let us show such antiquated, erroneous systems of belief the exit and bring on the fresh liberation of discovering the truth of how we are to live for ourselves, each of us personally in our lives, and all by looking to our own feelings for it. Self-revelation through our feelings is the way to go.

The Way of the Mind is ending, and is really the End Times – the End of our mind control, and **it's about time!** With the Way of our Feelings replacing it.

The End Times means the end and therefore a New Beginning. And that new beginning is a whole new Spiritual Age – an age based on self-revelation of truth through one's feelings, coupled with and supported by higher revelations from the Celestial spirits, angels and nature spirits.



The Feelings First Spirituality is the True Way to God because it helps you get to know God, helping you to reach out, connect and be personal with God, and do God's Will, all through your feelings. It is the only true way of getting to know the God of Feelings – our beloved Heavenly Mother and Father, the Great Soul of Divine Love.

Love comes through our feelings and not our mind, as we've all been wrongly led to believe.

**Feelings First; then comes The Truth; then comes Love.**

**LOVE is the Religion of Feelings, being:**

**Feelings First Spirituality, The New Way**



my  
**House** is your  
**Paradise**  

**HOME**

# PASCAS CARE

## "Beacons of Light"

### around the globe



This document relative to the topic:

Map of Consciousness calibration 500