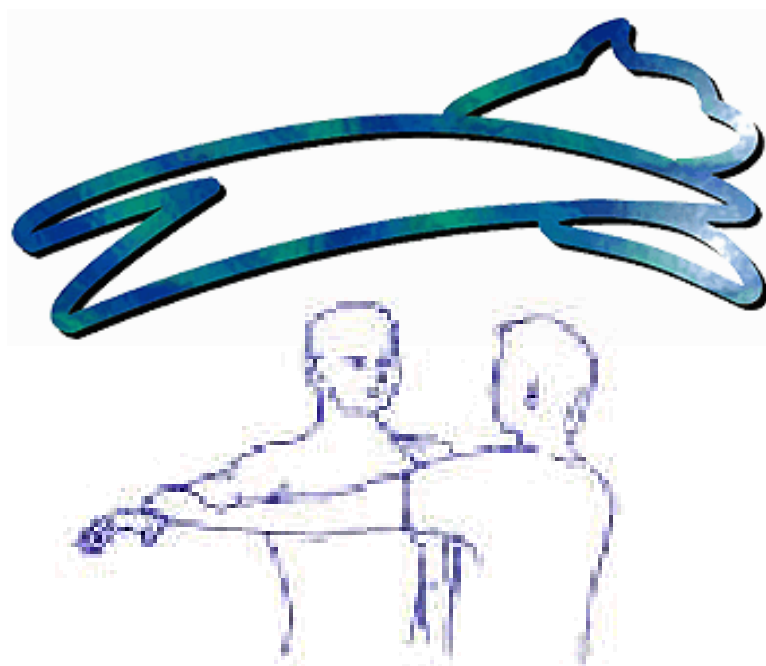


PASCAS CARE

KINESIOLOGY & PERSONALITY TRAITS



“Peace And Spirit Creating Alternative Solutions”

PASCAS FOUNDATION (Aust) Ltd
ABN 23 133 271 593

Queensland, Australia

Em: info@pascasworldcare.com
Em: info@pascashealth.com

Pascas Foundation is a not for profit organisation

www.pascasworldcare.com www.pascashealth.com

PASCAS FOUNDATION (AUST) Ltd



The New Way:

**Learning how to live true to ourselves by living true to our feelings.
Longing for the truth of our feelings.**

**By living true to ourselves, true to our feelings, we are living true to God.
It's that simple.**

Golden Rule:

**Always honour another's will as one honours one's own will.
Never interfere with another's will.**

Our Heavenly Mother and Father's Divine Love:

Pray and long for it, ask Them for it; and receive it into your soul.

Pascas supports these four simple guidelines.

At first glance it may appear simple and obvious, however the truth is very much the opposite. For 200,000 years humanity has been induced to live through its mind. We use our minds to suppress many of our feelings, and particularly our bad feelings. We do all we can to stop ourselves from feeling bad. Our minds are addicted to control; the control of ourselves, others and our environment. Further, our minds cannot discern truth from falsehood. Our minds are addicted to untruth.

We are to express our feelings, both good and bad, at all times; and to long for the truth of them. We are parented to deny and not express many feelings, all of which become repressed within us making us ill and causing all our problems. The woes of the world are due to our Childhood Repression.

The true Liberation of Women will come as women live true to their feelings, understanding that it's vital for them to express all they feel all the time, whilst sincerely wanting to know the truth and reasons why they are feeling such feelings. With women and men supporting each other in their feeling expression and longing for the truth of their feelings, and not striving to compete and have power over the other through yet more mind control.

We are to fully acknowledge, feel and be, our feelings, then express them as fully as we can, all whilst longing for the truth they are to show us. This is our Feeling-Healing, or Soul-Healing if including the Divine Love. We are to bring to light the truth of our pain, so we can fully connect with it in our adult lives, knowing why we have it and how it's all come about through our childhood.

The Pascas Foundation is to promote these Revelations. Pascas supports this New Way of living, introducing many of these new understandings. It is helping to offer this Feeling First way of living as an alternative to our mind ways. All of which will help liberate one's personality from the constriction and control of one's controlling beliefs and behaviour. It is how to live a True Spirituality, living true to our soul through our feelings.

This is the 'New Birth' of humanity. By living the truth of our feelings we are to become who we have truly meant to be – children of our Heavenly Mother and Father.

Kindly go to www.pascashealth.com, then Library Download page, scroll down to Medical and to open the PDF, click on  [Pascas Care Kinesiology Testing.pdf](#), this document to be read in conjunction.

MAP OF CONSCIOUSNESS

Map of Consciousness from Dr David R Hawkins, M.D., Ph.D. "Power vs Force".

Level	Log
ENLIGHTENMENT	700-1000
PEACE	600
JOY	540
LOVE	500
REASON	400
ACCEPTANCE	350
WILLINGNESS	310
NEUTRALITY	250
COURAGE	200
PRIDE	175
ANGER	150
DESIRE	125
FEAR	100
GRIEF	75
APATHY	50
GUILT	30
SHAME	20

PERSONALITY TRAITS:

Less than two dozen people on planet Earth.

Would not pick up a weapon let alone use it. These people gravitate to the health industry and humanitarian programs.

Debate and implement resolutions without argument and delay. 470

Debate and implement resolutions in due course. 440

Debate and implement resolutions with some degree of follow up generally needed. 410

Management supervision is generally necessary.

Politics become the hope for man's salvation.

Cause no harm to others starts to emerge. Power overrides force.

Illness is developed by those man erroneous emotions that calibrate 200 and lower.

Armies around the world function on pride. Force is now dominant, not power.

Harm of others prevails, self-interest prevails.

Totally self-reliant, not God reliant.

Fear dominates all motivation.

Suicide is possible and probable.

At these levels, seriously harming others for even trivial events appears to be justifiable.

Poverty, unemployment, illness, etc., this is living hell on Earth.

MAP OF CONSCIOUSNESS					
God-view	Life-view	Level	Log	Emotion	Process
Self	Is	Enlightenment	700 1000	Ineffable	Pure Consciousness
All-Being	Perfect	Peace	↑ 600	Bliss	Illumination
One	Complete	Joy	↑ 540	Serenity	Transfiguration
Loving	Benign	Love	↑ 500	Reverence	Revelation
Wise	Meaningful	Reason	↑ 400	Understanding	Abstraction
Merciful	Harmonious	Acceptance	↑ 350	Forgiveness	Transcendence
Inspiring	Hopeful	Willingness	↑ 310	Optimism	Intention
Enabling	Satisfactory	Neutrality	↑ 250	Trust	Release
Permitting	Feasible	Courage	↑ 200	Affirmation	Empowerment
Indifferent	Demanding	Pride	↓ 175	Scorn	Inflation
Vengeful	Antagonistic	Anger	↓ 150	Hate	Aggression
Denying	Disappointing	Desire	↓ 125	Craving	Enslavement
Punitive	Frightening	Fear	↓ 100	Anxiety	Withdrawal
Disdainful	Tragic	Grief	↓ 75	Regret	Despondency
Condemning	Hopeless	Apathy	↓ 50	Despair	Abdication
Vindictive	Evil	Guilt	↓ 30	Blame	Destruction
Despising	Miserable	Shame	20	Humiliation	Elimination

The Final Doorway to Enlightenment / Nonduality
 The beginning of the Nonlinear Realm 500
 The beginning of Integrity 200

Note:**The Map of Consciousness scale is from 1 to 1,000**

The Map of Consciousness (MoC) table is based on the common log of 10. It is not a numeric table.

A calibration increase of 1 point is in fact a 10 fold increase in energy.

A calibration increase of 10 points is in fact a 10,000,000,000 fold increase in energy.

Thus the energy differentials are in fact enormous!

NATURAL LOVE or HUMANITY'S ENDOWED EMOTIONS:

Your soul, being your real you, is an emotional being. Your soul, though a thought of God, does not possess anything of the divine within it. It existed in a state of bliss, in a natural love state, pending individualisation which is achieved at conception which is the time of incarnation. Your soul is endowed with natural love emotions noted within the top section of the Map of Consciousness scale, being those emotions calibrating above 200.

MAP OF CONSCIOUSNESS					
God-view	Life-view	Level	Log	Emotion	Process
Self	Is	Enlightenment	700 1000	Ineffable	Pure Consciousness
All-Being	Perfect	Peace	↑ 600	Bliss	Illumination
One	Complete	Joy	↑ 540	Serenity	Transfiguration
Loving	Benign	Love	↑ 500	Reverence	Revelation
Wise	Meaningful	Reason	↑ 400	Understanding	Abstraction
Merciful	Harmonious	Acceptance	↑ 350	Forgiveness	Transcendence
Inspiring	Hopeful	Willingness	↑ 310	Optimism	Intention
Enabling	Satisfactory	Neutrality	↑ 250	Trust	Release
Permitting	Feasible	Courage	↑ 200	Affirmation	Empowerment

Humanity's erroneous emotions are those calibrating below 200 on the Map of Consciousness. The environment around a newly conceived child progressively degrades the condition of that child's soul. When the child reaches about the age of 7, the child's soul condition will reflect the parent's condition. These negative emotions are like a crust around the pure soul it has within.

MAP OF CONSCIOUSNESS					
God-view	Life-view	Level	Log	Emotion	Process
Man made dis-empowering emotions:			↓ 200	All the negative emotions	
Indifferent	Demanding	Pride	↓ 175	Scorn	Inflation
Vengeful	Antagonistic	Anger	↓ 150	Hate	Aggression
Denying	Disappointing	Desire	↓ 125	Craving	Enslavement
Punitive	Frightening	Fear	↓ 100	Anxiety	Withdrawal
Disdainful	Tragic	Grief	↓ 75	Regret	Despondency
Condemning	Hopeless	Apathy	↓ 50	Despair	Abdication
Vindictive	Evil	Guilt	↓ 30	Blame	Destruction
Despising	Miserable	Shame	20	Humiliation	Elimination

Note:

The Map of Consciousness (MoC) table is based on the common log of 10. It is not a numeric table.

A calibration increase of 1 point is in fact a 10 fold increase in energy.

A calibration increase of 10 points is in fact a 10,000,000,000 fold increase in energy.

Thus the energy differentials are in fact enormous!

Blessing your food achieves an increase of 15 points which is in fact a quadrillion (10^{15}) jump in energy.

Levels of consciousness are always mixed: a person may operate on one level at one time and quite another level in another area of life. [In fact, we move in and out of fear, anger, guilt, etc. for either brief or extended periods. Even the levels up through unconditional love at 500 are experienced by most. But it is the percentage of time spent in each level that determines the dominant level in which one lives.]

Shame: Shamed children are cruel to animals and to each other. Later they are capable of forming vigilante groups to project their shame onto others whom they righteously attack. Serial killers have often acted out of sexual moralism with the justification of punishing "bad women". Shame produces false pride, anger, guilt. Moc 20 – 29

Guilt: associated with victim hood, masochism, remorse. Unconscious guilt results in disease, accident - proneness, suicidal behaviour. Preoccupation with punishment. Guilt provokes rage. Capital punishment is an example of how killing gratifies a guilt-ridden populace. MoC 30 – 49

Apathy: State of helplessness / death through passive suicide / level of homeless and derelicts / level of streets of Calcutta, abandonment of hope. MoC 50 – 74

Grief: Level of sadness, mourning over the past / habitual losers / chronic gamblers / notion of being unable to replace what is lost. MoC 75 – 99

Fear: Fear runs much of the world [in the enmity fearfulness is dominant emotion of 65% of the world] insecurity, vulnerable / leads to jealousy and chronically high stress level / very contagious / fearful people seek strong leaders. MoC 100 – 124

Desire: Motivates vast areas of human activity. Desire for money, prestige runs lives of many who have risen above Fear. At this level of addiction / desire for sexual approval has produced an entire cosmetics and fashion industry / accumulation / greed. It is insatiable because it is an ongoing energy field. Satisfaction is impossible / frustration is assured. MoC 125 – 149

Anger: Leads to either constructive or destructive action. Expressed most often in resentment and revenge. Irritable / explosive / leads to hatred. MoC 150 – 174

Pride: Has enough energy to run the Marines. Is a great leap forward from lower fields / is socially encouraged. Defensive / vulnerable because dependent upon external conditions. Inflated ego is vulnerable / divisive / arrogance / denial. The whole problem of denial is one of Pride. MoC 175 – 199

Courage: Where productivity begins / zone of exploration / accomplishment / fortitude / determination / exciting / challenging / openness. All of this is achieved through the leap to truth / the courage to face one's flaws. MoC 200 – 249

Neutrality: Release from a position or opinion / flexible / non-judgmental / realistic. Not getting one's way is less defeating or frustrating. Beginning of inner confidence. One is not driven to prove anything. Does not lead to any need to control others. MoC 250 – 309

Willingness: Growth is rapid here. Willingness implies that one has overcome inner resistance to life and is committed to participation. Genuine friendliness / do not feel demeaned by service jobs. Helpful / high self-esteem / sympathetic / responsive to needs of others / resilient / self-correcting / excellent students / readily trained. MoC 310 – 349

Acceptance: Major transformation takes place when one recognizes that one is the source of the experience of one's life. A full assumption of responsibility for one's self. Acceptance of life without attempting to conform situations to one's own agenda. Denial is transcended / calm / perceptive / balanced / appropriate. No interest in determining right and wrong. Self discipline / honouring of others rights / inclusive / tolerant. MoC 350 – 399

Reason: Intelligence/ capable of making rapid, complex decisions and abstractions / level of science / capacity for conceptualization / deals with particulars / level of Nobel Prize winners, Einstein, Freud, etc. but ironically reason is often a block to higher states. MoC 400 – 499

Love: Love is not what the media professes: emotionality / physical attraction / possessiveness/ sentimentality / control / addiction / eroticism / novelty. When lovers or marriages "break-up", they usually were based on these attitudes rather than love, which is why this kind of "love" can lead to hate. It wasn't love in the first place. Love Deals with wholes. Unconditional love is accompanied by measurable release of endorphins. Love takes no position / permanent. Only 0.04% of population lives out of this level of consciousness. MoC 500 – 539

Joy: Level of saints / effortless / people with near death experiences often have reached this level of consciousness. Healing occurs. Individual will merges with Divine will. MoC 540 – 599

Peace: Radiance / suspension in time and space / everything connects to everything else / no preconception. Great works of art, music and architecture, which calibrate between 600 and 700, can transport us temporarily to higher levels of consciousness. MoC 600 - 699

Enlightenment: Buddha and Krishna. Jesus progressed beyond 1,000 to achieve at-onement with God whilst living on earth. Enlightenment is a never ending process. Moc 700 – 1,000



**PASCAS
PAPERS**

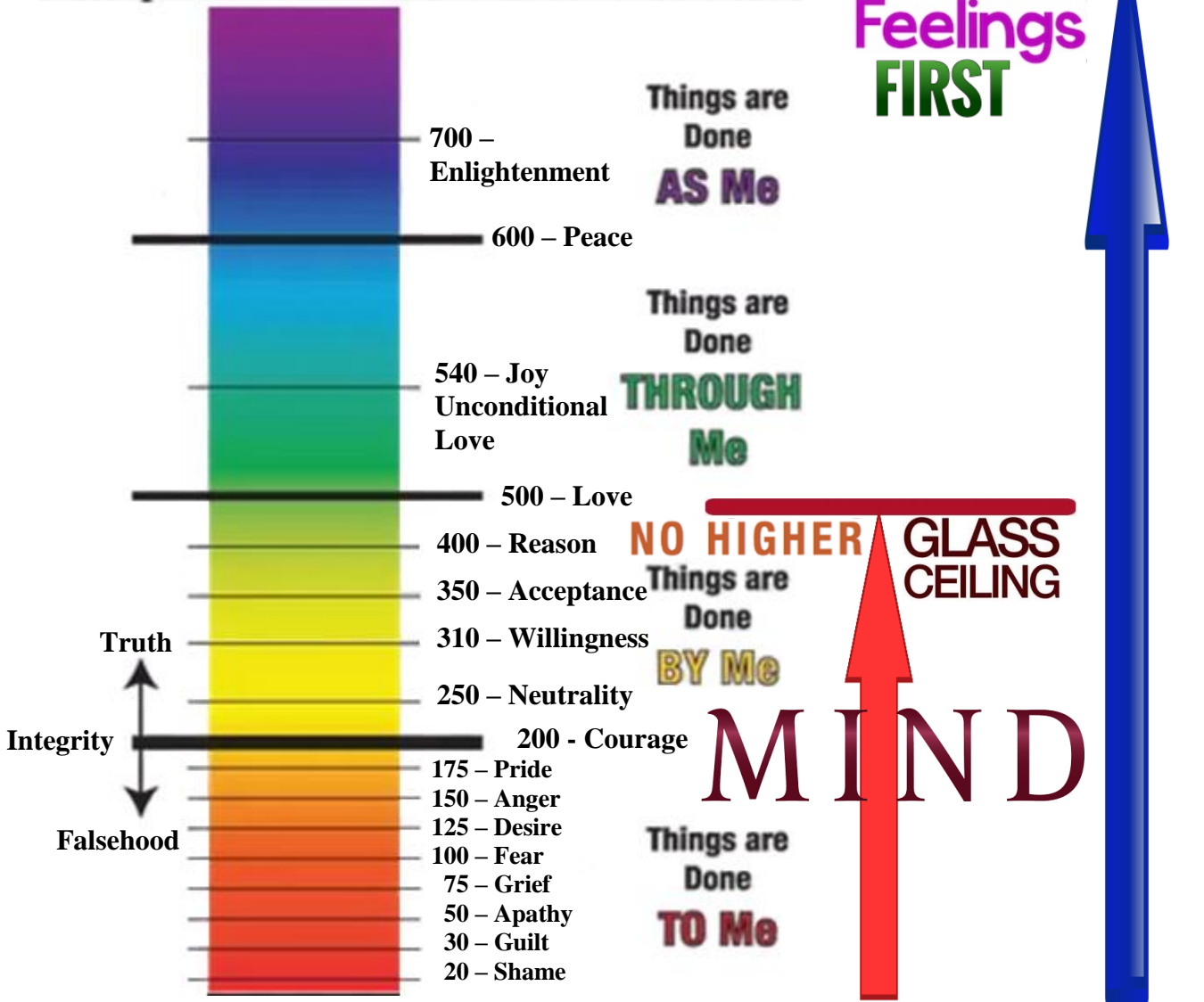
<http://www.pascashealth.com/index.php/library.html>

Library Download – Pascas Papers

All papers may be freely shared. The fortnightly mailouts are free to all, to be added into the mailout list, kindly provide your email address. info@pascashealth.com

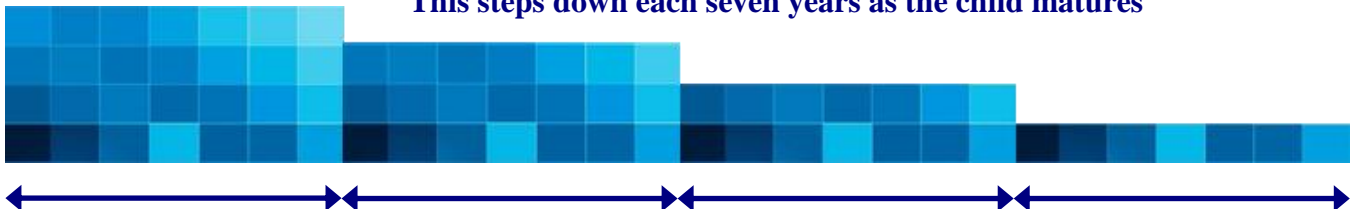
Map of Consciousness


Feelings
FIRST



POTENTIAL to BENEFIT your CHILD through our own FEELING HEALING:

This steps down each seven years as the child matures



From conception to age 6 or 7

From 8 to age 14

From 15 to age 21

From 22 to age 28

As we heal, we directly heal our children similarly.

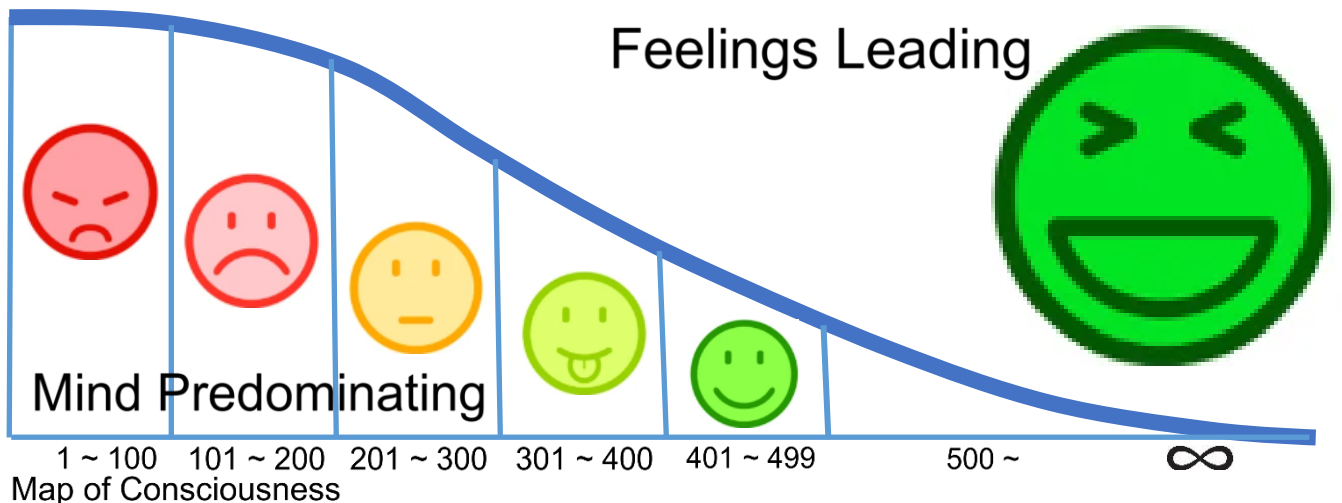
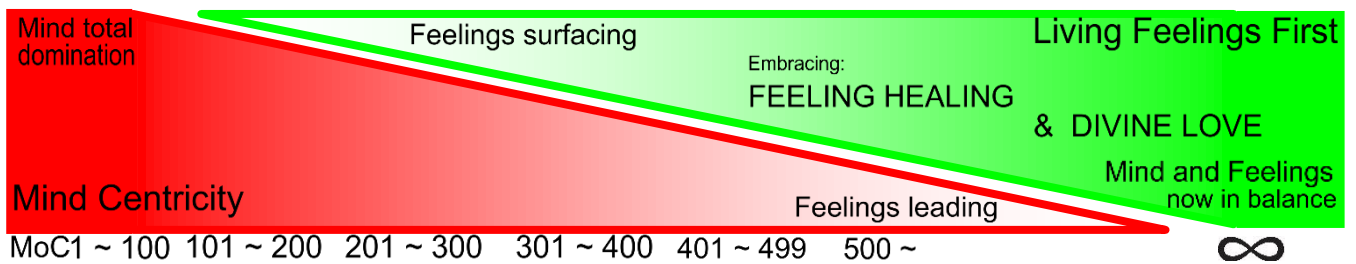
The Indwelling Spirit arrival for the child around age 6 or 7 starts their independence.

Living Mind-Centric versus Living Feelings First

Mind Total Domination: We are without a moral compass when rejecting our feelings!!
 The mind cannot discern truth from falsehood! The Mind is addicted to untruth!
 The mind is addicted to control of others and of the environment!
 We present a false façade of pleasantness, cooperation, kindness and yet we are very disturbed and distressed through ongoing suppression of our true self.
 When totally suppressing our feelings, we have no empathy, perception and remorse, yet this is the majority of people worldwide!

Soul Based Feelings: They are always in Truth. Truth is Love. Through our feelings we have all we need to know, we are fully self-contained in what our Feelings will reveal to each of us!
 Our feelings will set us free!

“To liberate one’s real self, one’s will, driven by one’s soul, moves one to embrace Feeling Healing, so as to clear emotional injuries and errors. With the Divine Love, then one is also Soul Healing. We are to feel our feelings, identify what they are, accept and fully acknowledge that we’re feeling them, express them fully, all whilst longing for the truth they are to show us.”



Correlation of Levels of Consciousness – Soul Condition – and Society Problems				
Level of Consciousness	Rate of Unemployment	Rate of Poverty	Happiness Rate “Life is OK”	Rate of Criminality
600 +	0%	0.0%	100%	0.0%
500 - 600	0%	0.0%	98%	0.5%
400 - 500	2%	0.5%	79%	2.0%
300 - 400	7%	1.0%	70%	5.0%
200 - 300	8%	1.5%	60%	9.0%
100 - 200	50%	22.0%	15%	50.0%
50 - 100	75%	40.0%	2%	91.0%
< 50	95%	65.0%	0%	98.0%

These two charts demonstrate the stark reality of one’s probable quality of life that we will experience relative to our personal calibration as per the Map of Consciousness developed by Dr David Hawkins. This calibration level is essentially set for life by the time we reach the age of six (6) years.

MoC	No. of Countries	Average MoC	Average Life Expectancy	Human Development Index	Happiness Index	Education Index	Per Capita Income 2020
400s	10	406	78.50	0.939	6.8	.861	US\$54,010
300s	13	331	71.77	0.798	5.9	.684	US\$17,827
200s	10	232	69.45	0.759	5.8	.648	US\$16,972
High 100s	18	176	69.00	0.724	5.2	.639	US\$9,900
Low 100s	7	129	61.88	0.653	4.7	.567	US\$2,628
Below 100	11	66	52.73	0.564	4.2	.488	US\$2,658
WORLD		220	70				US\$10,900

**Consider asking yourself this question:
Who hurt me when I was a child?**

Note:

The Map of Consciousness (MoC) table is based on the common log of 10. It is not a numeric table.

A calibration increase of 1 point is in fact a 10 fold increase in energy.

A calibration increase of 10 points is in fact a 10,000,000,000 fold increase in energy.

Thus the energy differentials are in fact enormous!

[David Hawkins - Applied Kinesiology - Power vs Force - 1 of 2](https://www.youtube.com/watch?v=-dbEZYfp-70)

<https://www.youtube.com/watch?v=-dbEZYfp-70>

duration 1:54:52



David Hawkins - Applied Kinesiology - Power vs Force - 1 of 2

[David Hawkins - Applied Kinesiology - Power vs Force - 2 of 2](https://www.youtube.com/watch?v=mqZPgKqbZ0)

<https://www.youtube.com/watch?v=mqZPgKqbZ0>

duration 1:00:54



David Hawkins - Applied Kinesiology - Power vs Force - 2 of 2

Kindly go to www.pascashealth.com and then to Library Download page, scroll to and click on to open:
MEDICIAL

 [Pascas Care Kinesiology Testing.pdf](#)

 [Pascas Care Kinesiology Personality Traits.pdf](#)

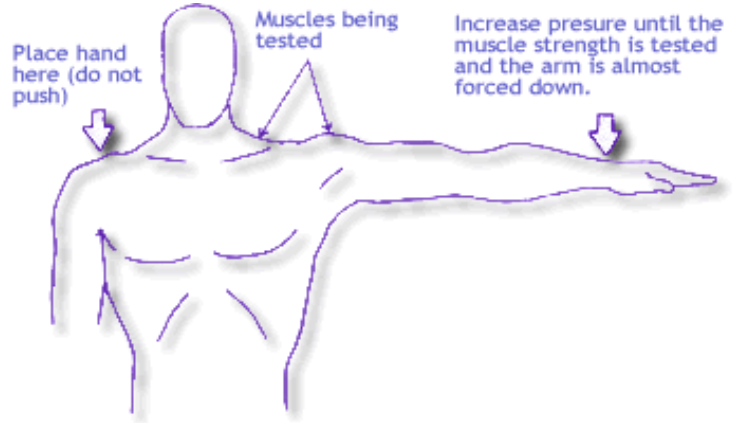
 [Pascas Care Kinesiology Videos.pdf](#)

PASCAS CARE LETTERS

 [Pascas Care Letters Dr Hawkins validates Feeling Healing.pdf](#)

KINESIOLOGY muscle testing can determine the level of truth of any statement!

Kinesiology Muscle Testing



Basics of muscle testing



Systems of Deception!

One person with unfettered and supreme control, a System Sovereign, has had aeons of time to passively and stealthfully impose upon his minions (us – you and me) a way of living that assures him, the arch hidden controller, that we would remain compliant and submissive to his begging. His extreme intelligence and consciousness is no match for us ascending mortals who arrive naively upon Earth with absolute dependence upon parents who have already capitulated – unknowingly – to his wily stealth.

The System Sovereign's goal was that we do not evolve, that we remain fearful of our true Heavenly Parents, that our true pathway for spiritual development is not revealed, that we live in a manner of servitude and ignorance through our minds believing that our submission to our minds will enable us to become all powerful and even mini-gods. When we transition into the spirit mind Mansion Worlds, we remain collectively his waiting army to fulfil his ambitions to expand his domain and territory. We have been well and truly screwed over through his imposed systems of:

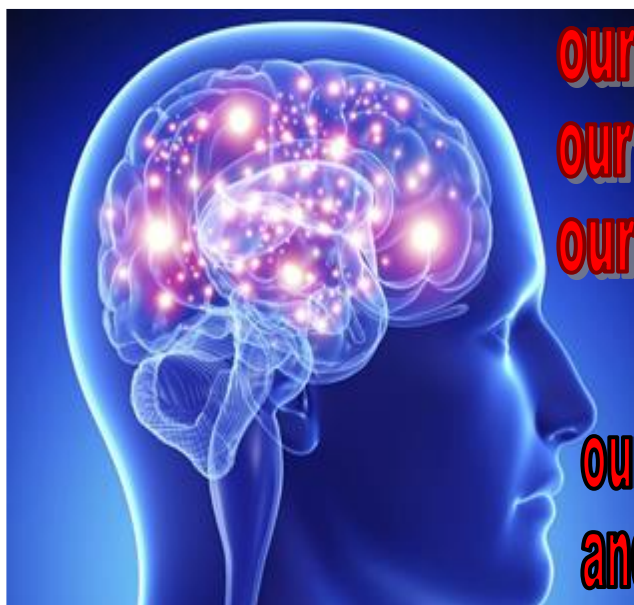
- Parenting – unable to love our children due to lack of truth in what we are provided with.
- Education – minimalistic, having our minds unable to progress beyond reason – our minds are addicted to untruth and control of others including our environment.
- Health systems – ignorance of our spirit bodies and gross ignorance of underlying cause of illnesses which are through the lack of being loved. Our health systems cannot heal.
- Commercial systems – we become salary slaves with suppressive debt slavery resulting from the costs of education, housing, health services, transportation and necessities.
- Political systems – that divide the community into camps and then deliver representation of only a portion of the population without candidates having necessary leadership skills and experience.
- Religions – there is only one truth. We are to live through our feelings – not our minds.

We have been led to live mind centric which is the pathway of all of nature except humanity which is ensouled. We of humanity are to live feelings first with our minds to assist in implementing what our soul based feelings lead us to embrace. We are truth seekers and truth is to be found through feelings.

Higher level personalities than our System Sovereign have now taken on all of the evilness and wrongness of what these rebellious Lanonandek spirits have imposed upon us and have healed themselves of these injuries. Now all systems assembled during the Rebellion and Default, now ending, need to be rebuilt!

Our pathway to Paradise, the home of our Heavenly Mother and Father, is through living through our soul based feelings, living feelings first, to express what our feelings draw our attention to and to long for the truth of what our feelings are to show us – both good and bad.

A lady named Samantha found James Moncrief's writings on a website and commenced to engage in her Feeling Healing. This may have been in 2013. Samantha is like all of us, she is an ascending mortal. She has no specialness nor has she had any support other than James' writings on the internet. Samantha has been successful with her healing. She has been very successful. She has now written numerous books outlining her experiences so each and every one of us can follow her example. An ascending mortal, Samantha, has conquered all that the rebellious Lanonandeks, led by Lucifer, has imposed upon us. Samantha is the new mother of humanity in demonstrating to us how to embrace the one and only pathway home to our Heavenly Mother and Father.



our MIND is a CONTROL ADDICT!
our MIND is addicted to UNTRUTH!
our MIND cannot discern TRUTH!

our MIND is within our SPIRIT BODY
and orchestrates our physical BRAIN.

ASSUMPTIONS are the product of our MIND!

HEALING ends
MIND-CONTROL!



our SOUL is our TRUTH!
our FEELINGS are our TRUTH!
FEELINGS FIRST, mind to follow!

all we need is WITHIN.
our MIND suppresses FEELINGS.



I am my SOUL!

I am not my body!

I am not my mind!

**Living Mind dominated is
claustrophobic and suppressive!**

***Being Mind Centric is being
Blind to Truth!***

Truth is our Feelings!

***Our soul-based Feelings
are always in Truth!***

WE are to LIVE BY and EXPRESS OUR TRULY LOVING SOUL BASED FEELINGS:



We arrive into the physical world (at conception) with a pure and free personality and a soul based will that are to be truly and fully expressed. Unwittingly, our carers, namely our mother and father and those close by, set about remodelling our individuality. That is, they shut our personality and self expression down. The result of this is traumatic. This is reflected through our physical body. This childhood suppression is what brings about all of our pains, illnesses, and mental disturbances. Only by embracing our emotional pain and injuries, either good or bad, and longing for the truth of them, and expressing them (talking) through these experiences to a companion, can we release these dreadful encrustments suffocating our true selves and liberate our personality, being our soul. We are to follow our passions and heart felt desires and to live true to ourselves, this is how our Heavenly Parents know us as and this is what we need to return to so that we can find our way home to Them.



Who hurt me when I was a child?

Natural Love Flow

Natural love is Creation's love;

One can swap back and forwards between paths

I am God

Intellectual

Self reliant (trust myself)

Self-determination way of life

Mind dominates

Thinking = Mechanistic

rational

analysis

reductionist

linear

Values = Mechanistic

expansion

competition

quantity

domination

Adult like

Control

Millions of paths (man created)

Peak possibility is 6th sphere

time to complete path:

100 years to over 1,000 years

Feelings First with Divine Love Flow

Divine Love is Soul's love.

I am God's son/daughter/child

Emotional

God reliant (God relationship)

Soul-spirit living harmony

Soul dominates

Thinking = Holistic

intuitive

synthesis

integrative

non-linear

Values = Holistic

conservation

co-operation

quality

partnership

Child like

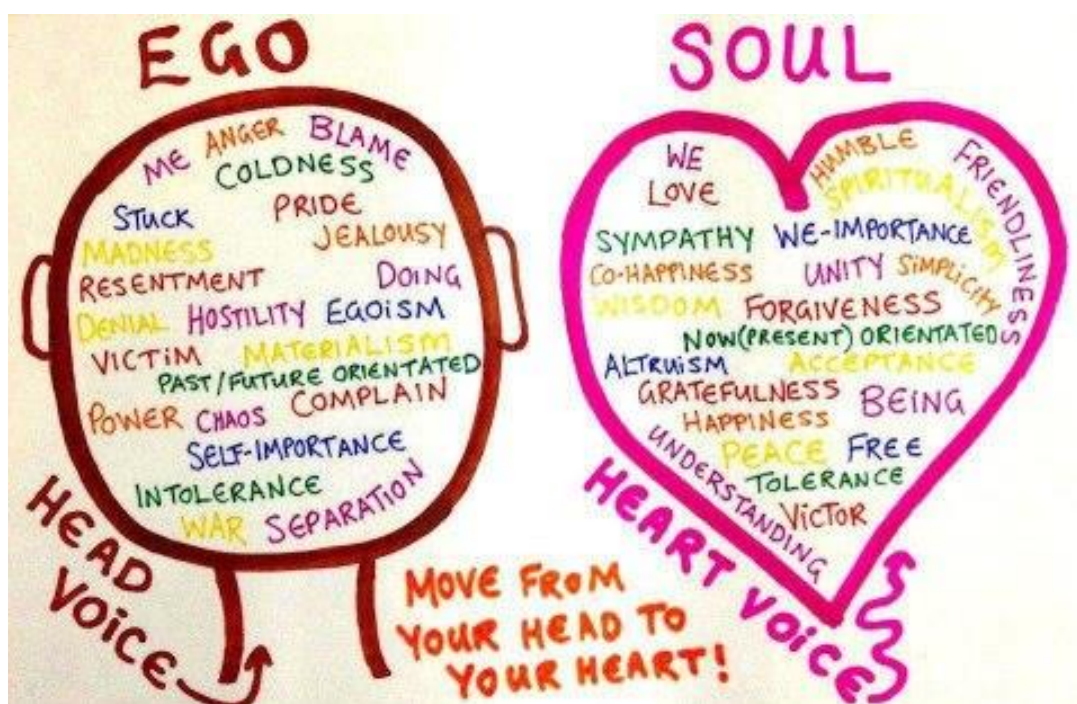
Feeling

Defined path (God created)

Peak possibility is infinity

(sphere / mansion world are same)

5 years to over 10 years to at-onement



LUMINOSITY of the SOUL can be LIKENED to the FOLLOWING:

**1st sphere, lower regions – Natural Love MoC 50+/-
The soul condition of a soul that is obliged to spend some time within the ‘hells’ may be no bigger than a dried garden pea. There is no luminosity and the environment is total darkness.**



The typical soul condition of humanity is such that they generate the luminosity of a single candle.

1st sphere, mid regions – Natural Love MoC 210



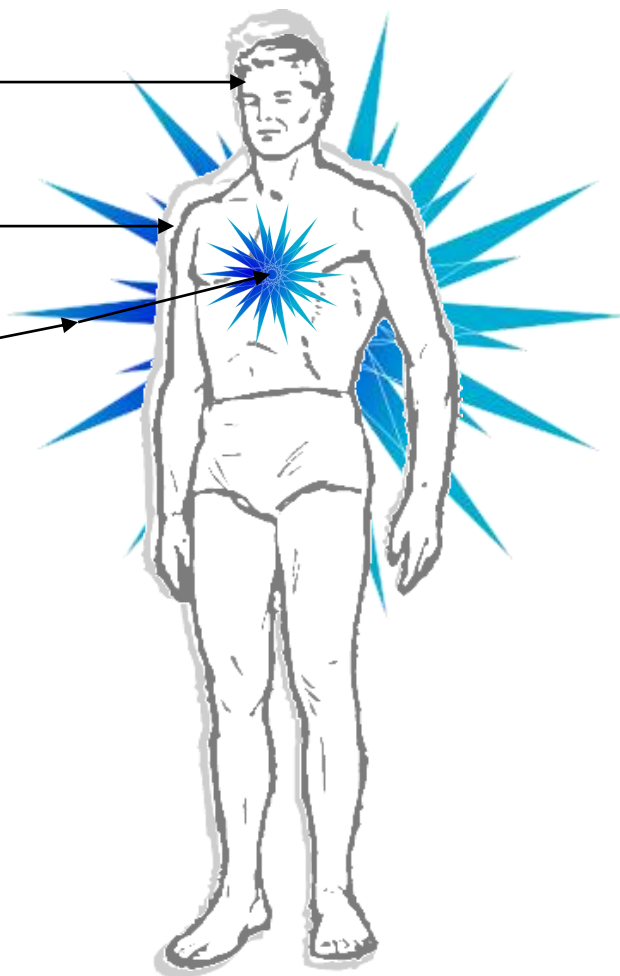
A soul that has grown in love and soul condition equivalent to the 8th sphere – the point of becoming at one with God. The luminosity of such a soul is equivalent to the midday sun.

8th sphere – only possible with Divine Love while doing one’s Feeling Healing! MoC 1,000+



ASPECTS of LIFE:

<u>Physical /</u> <u>material body</u> Brain	→
<u>Spirit /</u> <u>etheric body</u> Mind	→
<u>Soul + Spirit</u> <u>Combination</u> Senses Desires Memory Passions Intention Free Will Emotions Creativity Awareness Personality Aspirations Intelligence Consciousness <u>The Real You</u> <u>is your Soul!</u>	→



The spirit body is composed of a different kind of matter, "finer" or more "ethereal". The fact that its aspect reflects the condition of soul is a clear indication that the soul influences largely its formation, and even more, the soul is indeed the creator of this body, which covers it and provides it with the characteristic of individuality. The formation of the spirit body begins at the moment of incarnation of the soul in the foetus, incarnation which only takes place should there exist a high probability that the spirit of life has found in the new organism a stable biological structure, allowing it to carry out its life-giving function.

P529 Judas of Kerioth 8th May 2002

At the moment of conception we achieve individualisation and become self aware, we are then able to exercise our free will. At the moment of conception, our soul, being our real self, is creating the newly forming embryo and everything else every step of the way as Judas says above. And our soul utilises our parents' life forces to achieve incarnation.

Incarnation is about 16 days after conception when the embryo commences to pump blood.

At the moment of conception, there is nothing of the Divine within us. Only as we proceed to ask for and receive Divine Love does our soul slowly and progressively change into the nature of that which is Divine. As our soul receives Divine Love, and embraces Feeling Healing, it will grow, and grow, and grow in brilliance and into that which is Divine.

Soul Partners

Physical /
material body

Brain

Spirit /
etheric body

Mind

Soul + Spirit
Combination

Senses

Desires

Memory

Passions

Intention

Free Will

Emotions

Creativity

Awareness

Personality

Aspirations

Intelligence

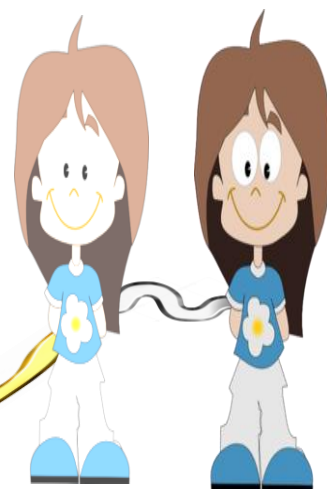
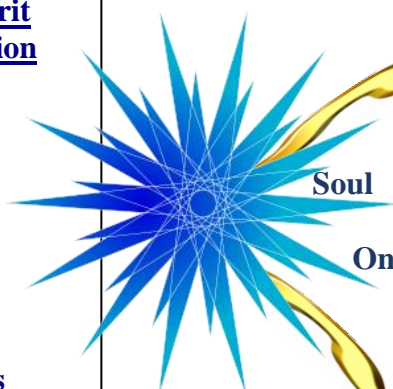
Consciousness

The Real You
is your Soul!

Our Soul
orchestrates
everything!

**ONE SOUL = TWO
PERSONALITIES**

The two personalities
from the one soul are
eternally compatible
once they are healed
of their Rebellion
and Default.

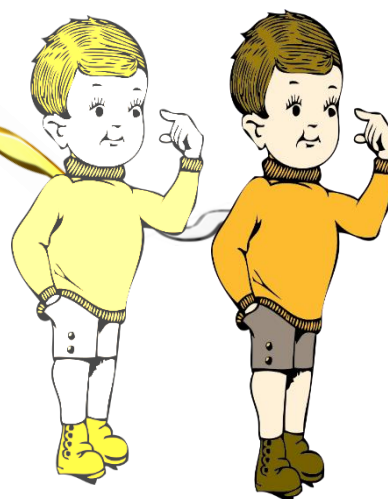


Spirit
Body

Physical
Body

One Soul = Two Personalities

The capabilities and
potentialities of every
individual personality
is only limited by
their childhood
suppression and
repression. Once we
heal, then our self-
expression will reveal
our true selves.



To liberate one's real self, one's will, being one's soul, is by embracing Feeling Healing so as to clear emotional injuries and errors. With the Divine Love, then one is also Soul Healing. We are to feel our feelings, identify what they are, accept and fully acknowledge that we're feeling them, express them fully, all whilst longing for the truth they are to show us.

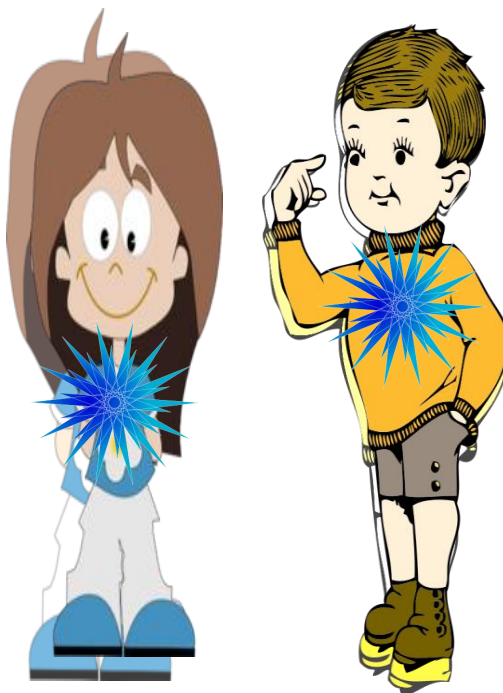
Soul Partners

SOUL – Soul Partners:

The Real You is your soul, you are one ‘half’ of that soul.

Each half of the original soul incarnates a spirit and physical body simultaneously, they being connected. The soul expresses each of its two personalities as a woman and man. True soulmates are always of the opposite sex.

Sexuality is an attribute of the two personalities the soul expresses; the soul itself does not know sexuality.



The soul connects to the two spirit bodies it has created by ‘golden cords’ of light; and the spirit body is in turn connected to the physical body by ‘silver cords’ of light.

The spirit body is your astral body. The etheric is really the body that is the template for the physical and one that doesn’t hold consciousness.

The soul remains invisible to the spirit and physical bodies, only being discernible by its luminosity through the spirit body.

95%+ of humanity currently are within the 1st sphere of development.

PERSONALITY



PERSONALITY

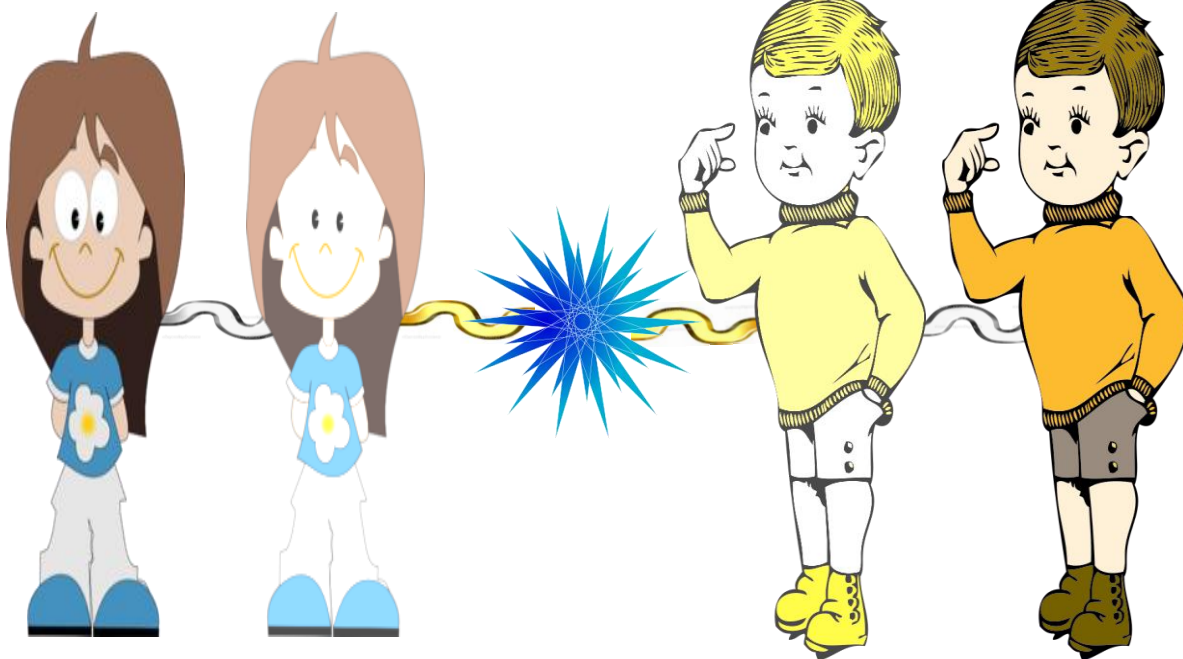
Physical Body

Spirit Body

Soul

Spirit Body

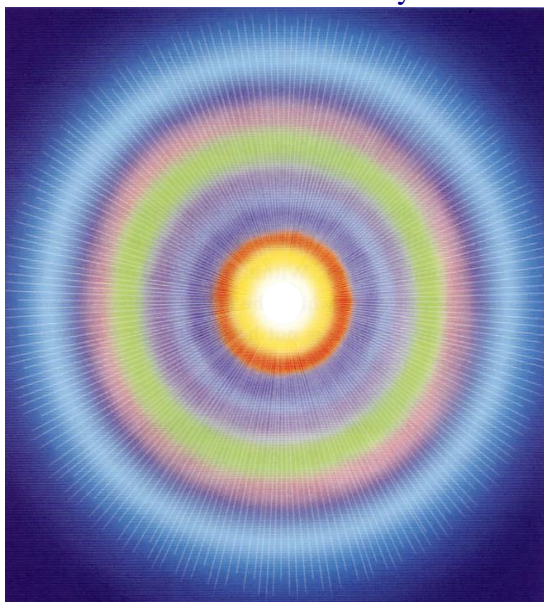
Physical Body



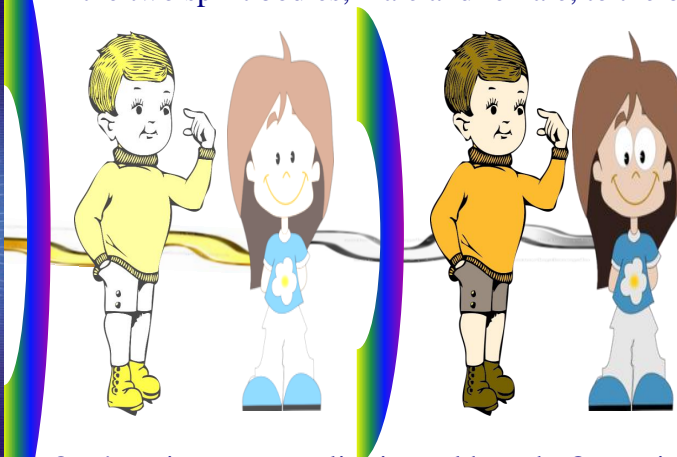
DIMENSIONS of ONE'S EXISTENCE:

Our SOUL IS NOT ENSOULLED IN OUR SPIRIT BODY. Our soul exists existentially in a whole different level or plane or place or dimension of being – 'soul land'. It doesn't exist in Creation, it's not experiential like Creation is. The soul, all souls, help create their part of Creation by expressing their personalities into Creation, and then by having their personalities do things (further create) in Creation.

SOUL exists existentially



Our Physical Body and our Spirit Body are of Creation, being linked together by cords of light as are the two spirit bodies, male and female, to the one Soul.



One's unique personality is soul based. Our unique soul expresses its unique personality through the two spirit bodies and physical bodies expressing both the male and female aspects.

PERSONALITY



**Our soul is the centre of our personality.
We are children of our Heavenly Parents.
Our soul manifests a male and
female personality - it is a duplex!**

Soul Partner

Many long for and seek their soulmate / soul partner which they will find only upon completing their Feeling Healing. And should they have embraced Divine Love, becoming of a Celestial soul condition. Our soul is duplex. One soul expresses two personalities – one being female and the other male – always. There is no homosexuality on a soul level, only on a dysfunctional personality level. When each soulmate couple have respectively healed the Rebellion and Default within them, then being compatible partners for all of eternity, embark upon their joint journey (ascension) to Paradise – the home of our Heavenly Mother and Father – the Original Soul Partners!

During 2020, this account was made of soul partners of a family group who had lived close together in a small rural community in mid New South Wales of Australia. They are all now in the Celestial Heavens. More or less, the diversity of experiences and journeys may be considered typical for many billions of family personalities:

Nanna Beth's soul partner lived and worked in Western Australia's gold mining industry at the same time that Beth lived in New South Wales, Australia.

Her daughter, Marie's soul partner is a native from the Middle Eastern Kingdom of Quasoria, which no longer exists, but was on an island in the Pacific that also no longer exists. He's what you would call an ancient spirit, from three pole shifts back. (A pole shift is a cyclical event that unfolds around 12,000 to 13,000 years, the last one being more than 12,000 years ago. That suggests he may have lived on Earth some 40,000 years ago. Adam and Eve materialised on Earth more than 38,000 years ago in the Middle East, on a peninsula at the eastern end of the Mediterranean Ocean.)

Kevin, born in 1937, married Marie's eldest daughter. Kathaleen, Kevin's soulmate / soul partner was born in 1901, and is from Tennessee, USA, and is black. Kevin is white, so they are 'salt and pepper'.

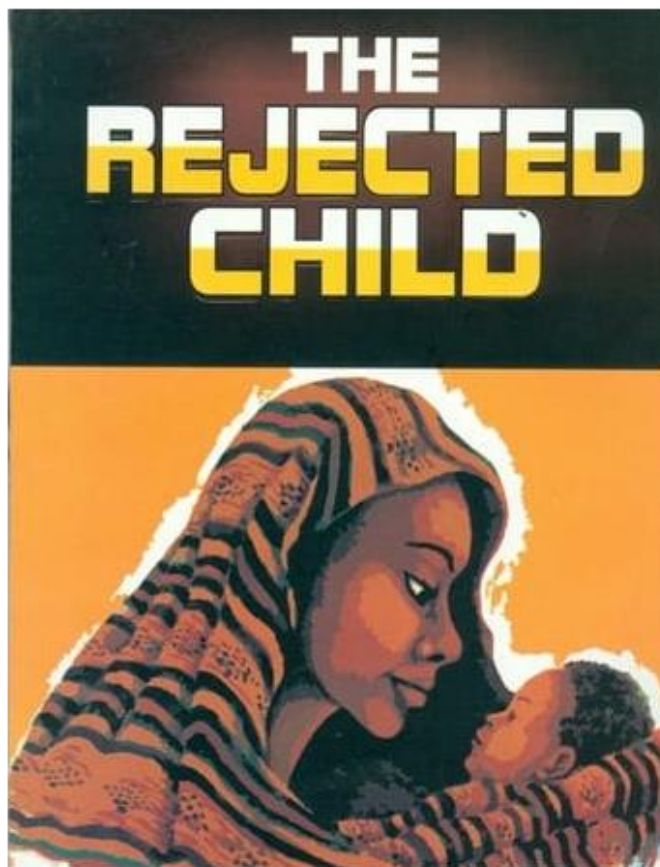
Bradley, Kevin's son, suicided in 1999, and early April 2018 became Celestial. Bradley's soul partner is from the region that is now Russia – but it was not when she lived.

Raymond, Nanna Beth's grandson, died aged 23. Raymond entered the 1st Celestial Heaven in May 2018. His soulmate / soul partner had been in the Celestials for about twenty years and she was in the third Celestial Heaven sphere then. She is from northern Europe.

Benjamin John, Marie's grandson, miscarried at twelve weeks and was spirit born. His soul partner is also spirit born and they are now in the 2nd Celestial Heaven, both having had lives in the spirit Mansion Worlds that replicated living as if they were on physical Earth.

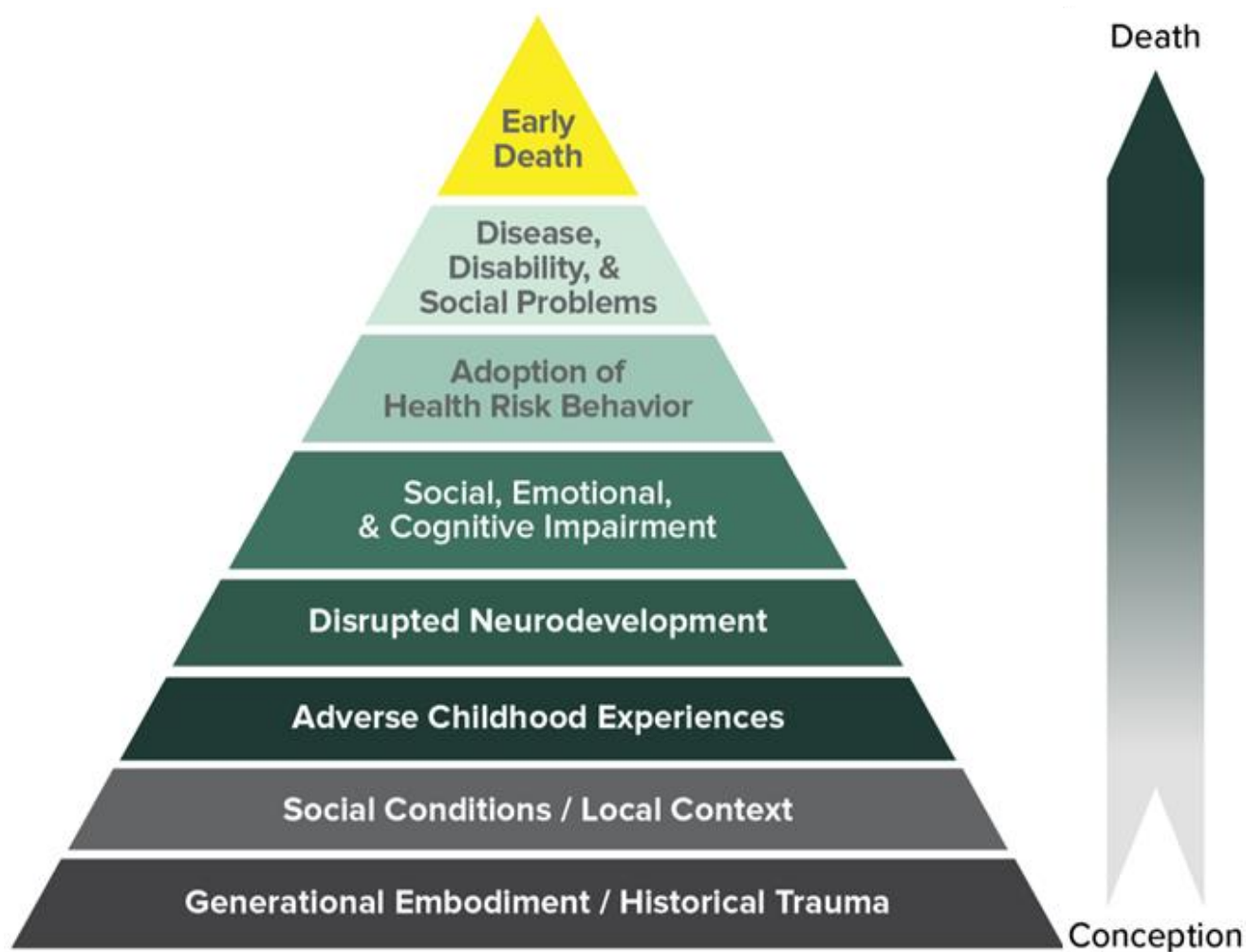
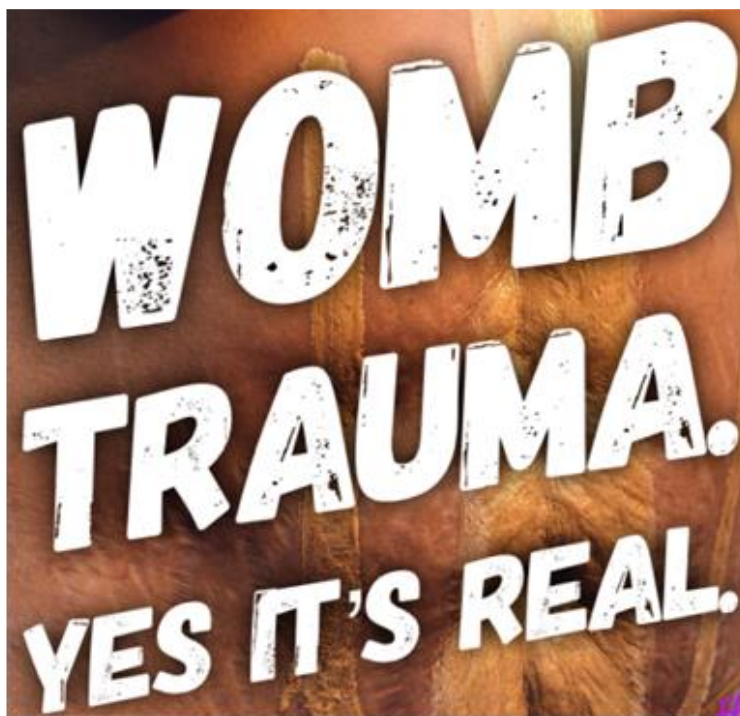
Physical incarnation (individualisation) is complete with the first heart beat, around 16 days after conception. Reincarnation is impossible. Annually, 130 million physical births take place, 45 – 50 million abortions as well as 45 – 50 million miscarriages. Childhood deaths annually may be as high as 10 million. Thus, around 45% of all incarnations do not achieve adult life.

While we remain living within the Rebellion and Default, we are rebelling against our soul; and consequently, against our soul partner. If we were able to find our soul partner, let alone recognise him or her, we would more than likely be repulsed by each other. Upon completion of our Spiritual Healing, usually we become connected with our soul partner, and then it is so for eternity.



Rejection





Mechanism by which Adverse Childhood Experiences Influence Health and Well-being Throughout the Lifespan

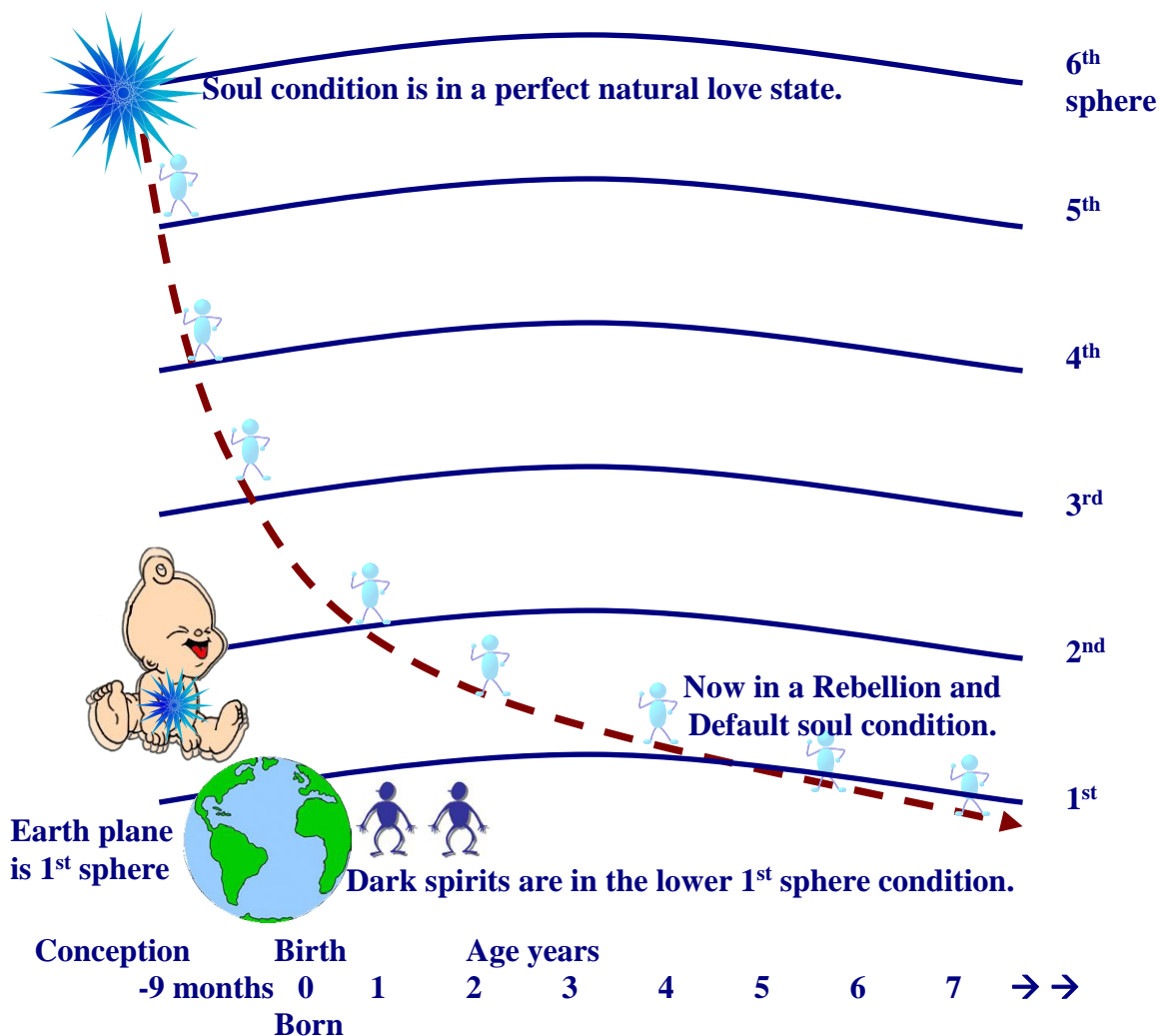
SOUL CONDITION of BABIES are SUPPRESSED to that of its PARENTS!

A newly incarnated soul is immediately being infused with the emotional injuries of those in its environment, that is, the damaging emotions and erroneous beliefs of its mother, its father and of those within its family environment.

This process continues until the child reaches around the age of six, then it tends to develop its own way from then on, however, closely aligning itself with a parent or both parents. Kinesiology testing of Map of Consciousness confirms this suppression progress. Conception can be likened to facing a water cannon for the child!

Poor condition spirits may have previously connected with a young child should the environment be conducive for such a relationship. However, on 22 March 2017, all such spirit connections became blocked. A spirit cannot harm another personality.

We, as parents, can work on our own soul condition, through feeling healing, which in turn benefits the baby. We can also ask and prompt spirits to seek help from brighter spirits from within their own environment.



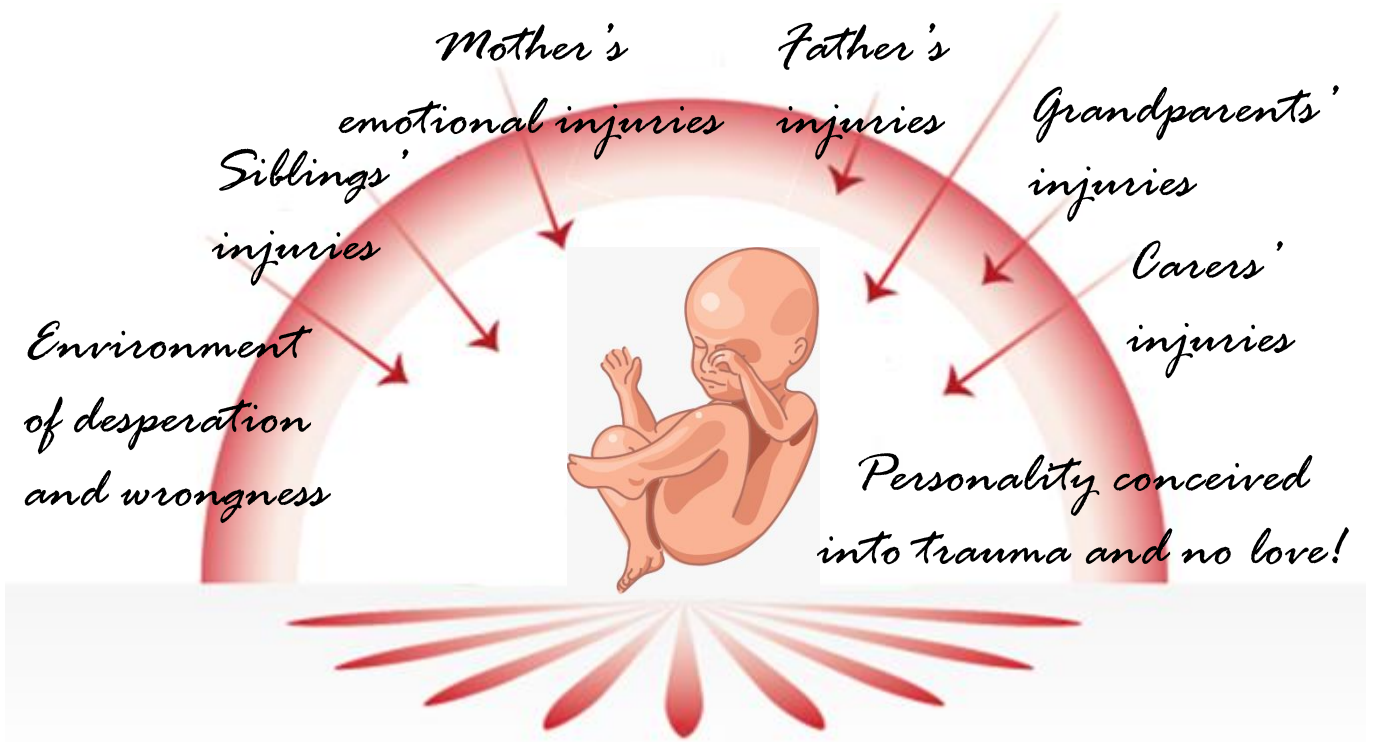
Age-group	Age
Gestation	conception to birth
Newborn	0 days to 1 month
Infant	1 month to 1 year
Toddler	1 to 3 years
Preschool	3 to 6 years
School age child	6 to 12 years
Adolescent	12 to 18 years

Our childhood formative years are from conception through to age of 6 years. Commencing at conception, we begin to take on all of the injuries and errors of belief of our parents and carers. We capitulate to adopting the 'personality' that our physical parents impose upon us, to the detriment of our true personality.



Somehow,
we go on
smiling and
laughing...





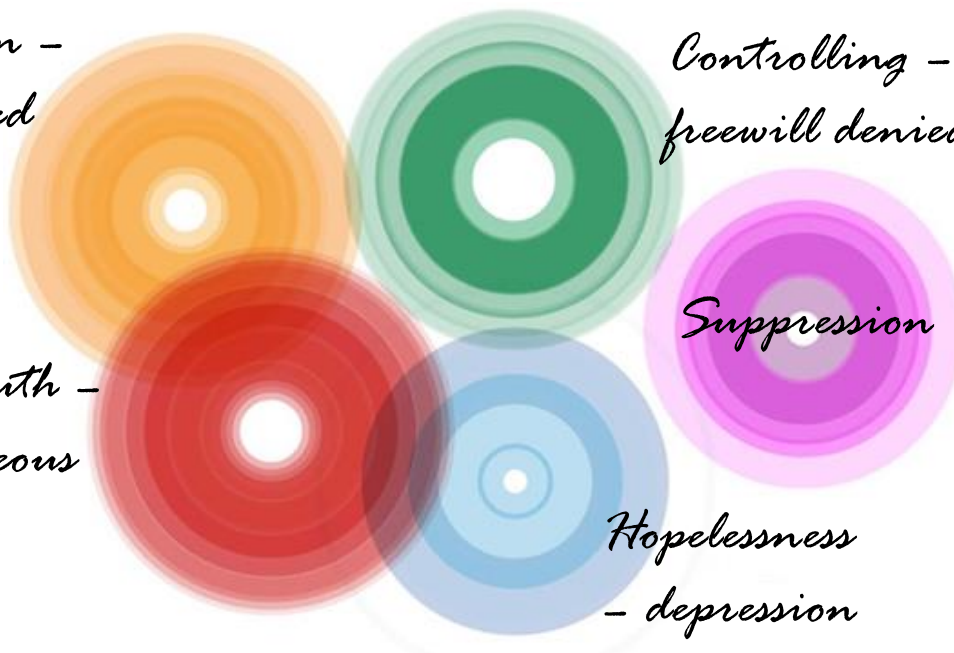
Rejection - unwanted

Controlling - freewill denied

Untruth - erroneous beliefs

Suppression

Hopelessness - depression





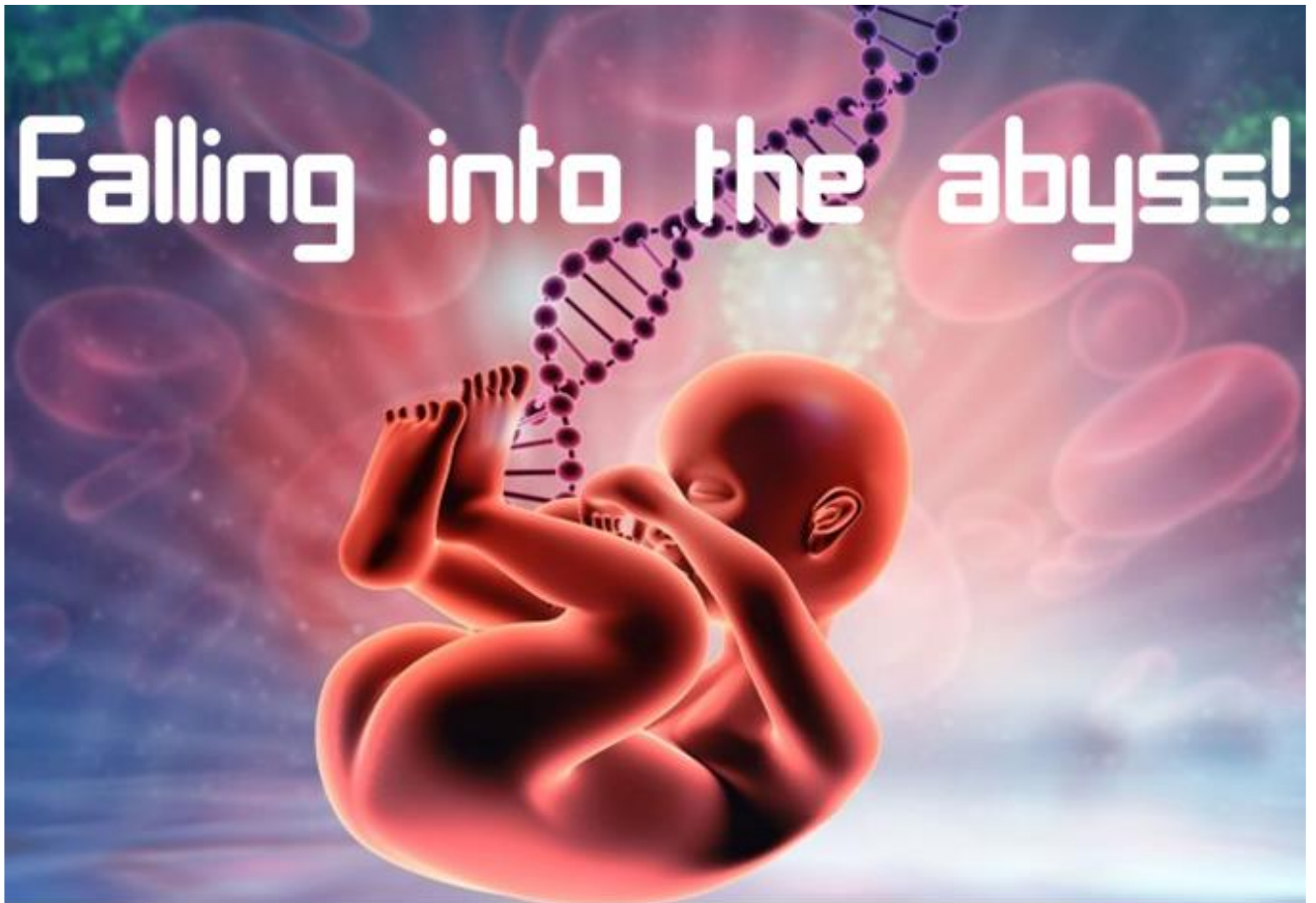
PARENTS

78% calibrate under 220

MAP OF CONSCIOUSNESS

God-view	Life-view	Level	Log	Emotion	Process
Self	Is	Enlightenment	700 1000	Ineffable	Pure Consciousness
All-Being	Perfect	Peace	↑ 600	Bliss	Illumination
One	Complete	Joy	↑ 540	Serenity	Transfiguration
Loving	Benign	Love	↑ 500	Reverence	Revelation
Wise	Meaningful	Reason	↑ 400	Understanding	Abstraction
Merciful	Harmonious	Acceptance	↑ 350	Forgiveness	Transcendence
Inspiring	Hopeful	Willingness	↑ 310	Optimism	Intention
Enabling	Satisfactory	Neutrality	↑ 250	Trust	Release
Permitting	Feasible	Courage	↑ 200	Affirmation	Empowerment
Indifferent	Demanding	Pride	↓ 175	Scorn	Inflation
Vengeful	Antagonistic	Anger	↓ 150	Hate	Aggression
Denying	Disappointing	Desire	↓ 125	Craving	Enslavement
Punitive	Frightening	Fear	↓ 100	Anxiety	Withdrawal
Disdainful	Tragic	Grief	↓ 75	Regret	Despondency
Condemning	Hopeless	Apathy	↓ 50	Despair	Abdication
Vindictive	Evil	Guilt	↓ 30	Blame	Destruction
Despising	Miserable	Shame	20	Humiliation	Elimination

Falling into the abyss!



to example parents like
these



ANGER



ANXIOUS ANNOYED
 SAD CONFUSED OVERWHELMED
 EMBARRASSED SCARED GUILTY STRESSED
 REJECTED INSECURE HURT FRUSTRATED LONELY
 NEGLECTED JEALOUS TIRED GRUMPY
 WORRIED SURPRISED DISGUSTED BORED SHY

Before we are conceived, we have had nothing to do with the culture or heritage into which we are about to be born.

Conception is individualisation of our unique personality!

Then our parents and carers infuse us with their errors and injuries!

We perpetrate their erroneous ways!

It's all about
Experiences
 &
FEELINGS

John the
Typist



**BE FEELINGS
EXPRESSIVE!**

BIOLOGICAL RACE and HUMAN DIVERSITY:

Heritable race seems as obvious as the colour of one's skin and the texture of their hair. A troublesome inheritance is often considered to be related to genes, race and human history.

Individuals commonly look upon themselves as being the physical body. Thus, they polarise their existence upon their family culture and history. At the same time they tend to look at outsiders who may be distinctly different in colour, appearance, religious embracement and culture as being unacceptable.

We are not our physical body. And we are not of the nature and personality that our biological parents are. We each are a unique and beautiful soul connected by cords of light to a spirit body that is the template of the physical body that comes about by the commingling of the life forces of the body's physical parents. We are attracted to the newly forming embryo. Each and every one of us could have been drawn to be individualised into any family on the planet. We are individuals who commence our self awareness at the time of conception of the physical body of a baby as it commences its short life.

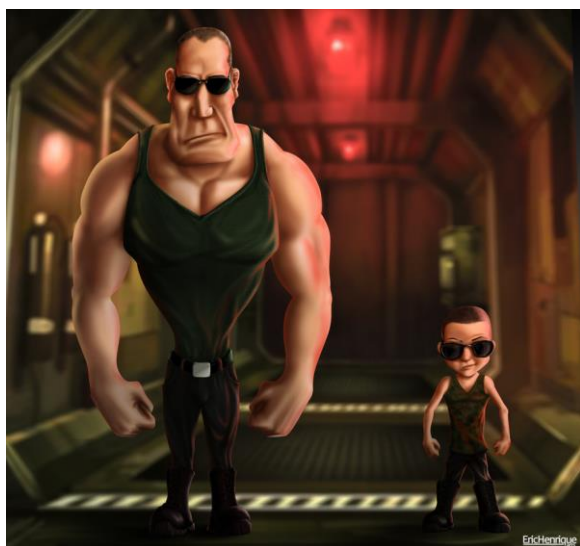


By being attracted to a specific race, culture and that family's religion does not make us any different to anyone else, other than the view we take on board for our physical life's journey. Think of how you would like to be treated. Then treat all other people the same way. Progress in love by developing loving kindness toward one's self, then to a good friend, then to a neutral person, then to a difficult person, and finally toward the entire universe of life!



From the moment of conception / incarnation we absorb the emotions of those within our environment, mostly those of our parents. By the time we are around six years of age we will most likely reflect the emotional structure / soul condition of one or the other parent. Thus, generation after generation remain within the same soul condition envelope. Our gene structure reflects one's emotional and soul condition. Should we grow in love then genes will adjust to reflect this evolutionary development.

When the environment is one of anger, fear, apathy or such like, then blaming outside circumstances is resorted to. Thus, generation after generation may blame outside circumstances and others for their unsatisfactory life predicaments, when it is of their own making.



Like Father – Like Son

Like Mother – Like Daughter



As individuals within family environments step away from the norms of the family and develop their love of self and the love for others then a shift away from generational patterns is achievable. This can now be embraced by all through our individual Feeling Healing, and with Divine Love, then Soul Healing. This can be on significant scales, such as when whole communities embrace Feeling Healing with Divine Love and move into higher levels of soul condition. This can see positive major shifts in the social environment within communities. Educational systems may find students performing better, health systems may have less taxing demands on services, and policing services may have less call on their workforce. All in all, the prosperity of the community grows.

The greatest joy within observing such a development is that old grievances that have been handed down from generation to generation can and are put aside and more constructive agendas then dominate discussion.

Living Feelings First is to replace Mind Centricity

A hidden very few controllers have orchestrated every system and way of living for humanity to be mind centred. While we live through our minds WE CANNOT EVOLVE!!! Our minds are wonderful but they are, in themselves, addicted to control over the environment, over others and ourselves, and our minds are addicted to untruth, they cannot discern truth from falsehood. We have been screwed for the past 200,000 years through these hidden controls.



Firstly, all the emotional injury that we take on, that we are infused with, commencing at the moment of conception, is what limits our capabilities throughout lives. It is these same emotional injuries, mostly infused upon us by our physical parents, which set in place our health throughout our lives, our social issues, our quality of life and our prosperity. However, through mind centricity we remain stagnant.

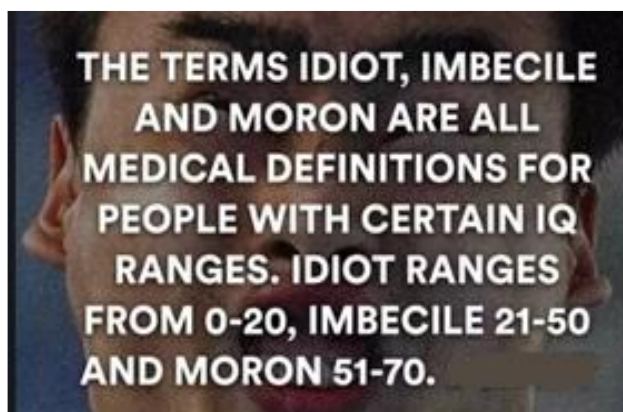
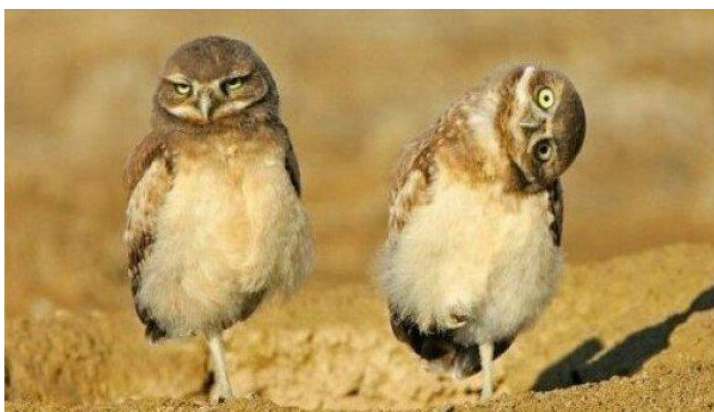
What we take on emotionally must be released emotionally. We must talk it out of us emotionally. The pain will be no greater than the pain that was felt when we were infused or repressed throughout our childhood forming years. But this is the one and only pathway to heal and evolve beyond the zombiism that we see around us. We are all functioning in a stupor due to the limitations of mind centricity.

Our feelings are always in truth, they are our truth. With truth we have freedom and prosperity – yet we will need little – as our fears and addictions will be put aside. The connectivity with the spirit worlds will also open up to those who heal through their Feeling Healing.

WHOLE DIFFERENT Way of Life.



Incompetent moronic idiot zombies!



IMBECILE

CRETIN

IDIOT

DOLT

GOOF

MORON

STUPID

FOOL

SCHIZO

BLUNT

BLOCKHEAD

EVIL

PUMPKINHEAD

BAD

Know the outcome, you will see the journey! Look for the cause of the problem; by addressing the problem is through removing the cause.

Many give their authority to the few! Eight billion people are being controlled by a tiny number of people. The inner core is a very tiny few people. A tiny room of people impose control over eight billion people.

We are to stop acquiescing and agreeing to our enslavement! We do so out of Fear! Ignorance – lack of truth – is the foundation of the problem – and that

continues to be covertly imposed upon us by the tiny few hidden controllers!

We have to take control of our perceptions. What are our feelings telling us? Truth is not what you think or have been told. What do we feel – you and I? It is our feelings that are in truth – we are fully self-contained! Bring to surface our non-cooperation to our own enslavement.

Do you have the Nodding Dog Syndrome?

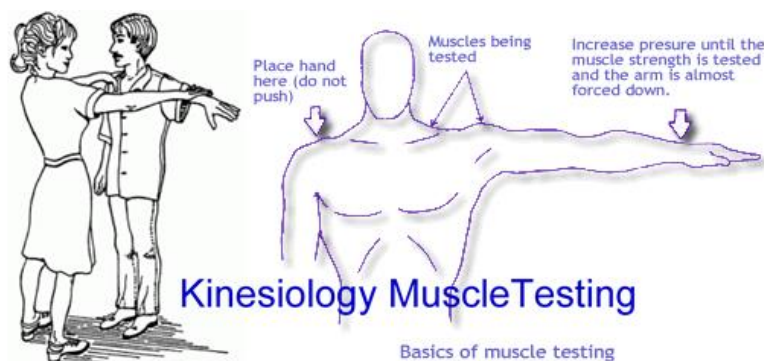
Bloody morons, complete idiots – front people are put into positions of power by the very few. Incompetent, moronic people are put into positions of power by these very few. That is after dividing the voices of the people and limiting the avenues to truth and our freedom.



Living Feelings First

For the past 1,800 years, the evolutionary development of humanity has stagnated at 190 on Dr David R Hawkins' Map of Consciousness (MoC). This of a consequence of humanity remaining mind centric and adhering strictly to the suppression imposed by wayward high level spirits who have now all been incarcerated and their puppets blocked from furthering their agendas.

Applying kinesiology muscle testing in conjunction with the Map of Consciousness (MoC) table, the inadequacies of those in leadership roles is readily discernable. Those in leadership roles throughout all of society can be recognised as to their capabilities, or lack thereof, instantly. Those who have not developed or evolved their consciousness to appropriate levels can now be dropped from positions of authority. Most will fail. The dearth of appropriate leadership will put a greater focus upon the inadequacies of the education systems worldwide and the inabilities of institutions, such as health, to provide the services required of them. Governments and their structures fail miserably.



Council of Elders

A Council of Elders may now begin to be formed. Initially, these are people who have significantly advanced through their personal Feeling Healing. The entry level for a council member may be considered to be as low as 700 on the Map of Consciousness (MoC). These are extraordinary people.

Through Feeling Healing, what unfolds is spontaneity and intuitiveness, versus the zombiism and stupor that presently prevails throughout mind centric humanity.

High level leadership roles are to be filled with those calibrating 470 or higher, their deputies to calibrate 440 or higher, and support leadership functions to be filled by those calibrating over 410. Health services personnel to calibrate over 500.

Everything is about to change. Living through our feelings is our pathway in growth with humanities evolution in spirituality is about to become dynamic.

Living Feelings First!
INTUITIVE
INSIGHTFULNESS
DYNAMIC
NATURAL INTELLIGENCE
SPONTANEOUS
VIBRANCY
Foresightful
Wisdom & Truth
FREEDOM
EQUALITY

SOME NUMBERS:

Currently, each year we have:

130 million live births
44 million abortions
50 million or so miscarriages

224 million conceptions /
incarnations per annum.

6.5 million child deaths per
annum. About 5% of those born do not
make adulthood.

123.5 million of those incarnated
make it to adulthood.

55% of those incarnated make it
to adulthood.

45% of those incarnated do not
have an adulthood life experience.

Natural love and divine love, and indeed
soulmate love are quite different energies.
Soulmate love is not natural sexual love.
Soulmate love is the only natural love that
matures and continues with us into the
Celestial Realms being beyond the 8th
sphere.

Just to step back a little to the above
statistics. For each abortion there are at
least two adults involved. As there are 44
million abortions each year, then 88
million adults may be involved in that
process. That indicates that two out of
every three live births, that is 66% of
adults, become participants in abortion.

Further, the number of reported abortions
are an under estimation of actual events.

Global estimates of INDUCED ABORTIONS:

	1995	2003	2008
World	45,600,000	41,600,000	43,800,000

<http://www.mswm.org/abortions.worldwide.abortionstatistics.htm>

BABIES born Each Year; 130,000,000

It is estimated that there are approximately 130 million
babies born throughout the world each year.

http://answers.ask.com/Society/Other/how_many_babies_are_born_each_year

**Miscarriage reportedly occurs in 20 percent of all
pregnancies. This may be an inaccurate number.
However, many women, before realizing a life has begun
forming within them, may miscarry without knowing it.
Therefore, the miscarriage rate may be closer to 40 or 50
percent.**

<http://www.allaboutlifechallenges.org/miscarriage-statistics.htm>

World murder rate: 7.6 per 100,000 people per year.

The NUMBERS: Violent deaths worldwide, 2004:

Total:	740,000
Homicide:	490,000
Indirect consequence of war:	200,000
In war:	50,000

http://www.dlc.org/ndol_ci.cfm?kaid=108&subid=900003&contentid=255032

Over one million people die by suicide every year.

**There are an estimated 10 to 20 million non-fatal attempted
suicides every year worldwide.**

<http://en.m.wikipedia.org/wiki/Suicide>

DEATHS worldwide per annum: 60,000,000

**Pollution causes about 40% of deaths worldwide, i.e., are
caused by water, air and soil pollution.**

<http://www.sciencedaily.com/releases/2007/08/070813162438.htm>

Violence is never Justified

Mass Formation Psychosis

Lost and confused!



DRUNK, HIGH & DRUGGED
ZOMBIES

INSANITY



The different faces of
depression



We all are immensely insane!



Sometimes It's Just Too Much.



Are we communicating?



Or deeper into the impersonal?



THIS IS HUMANITY **stupidified!**



Getting the Hell out of here!!

We do everything possible to avoid our Feelings!

We embrace the controlling natures of our mind to fill our day with activities that avoid our inherent truth to rise through our feelings and then having to express them and seek the truth behind them. We submit to imprisonment within our minds and willingly allow our life to roll on in a retarded and aimless manner that we can continue in earnest even when we transition into the spirit mind Mansion Worlds. Everything we may do is to avoid meaningful communication with another person and to distract ourselves from allowing our feelings to bring forth the vibrant and incredible true personality that we are that has been suppressed throughout our early forming years, from conception through to six years of age. Eventually our soul will say enough is enough and we will be confronted with a crash to open ourselves to our feelings and heal our Rebellion.





Talk
it Out



LET'S TALK
IT OUT

TALK *it* OUT

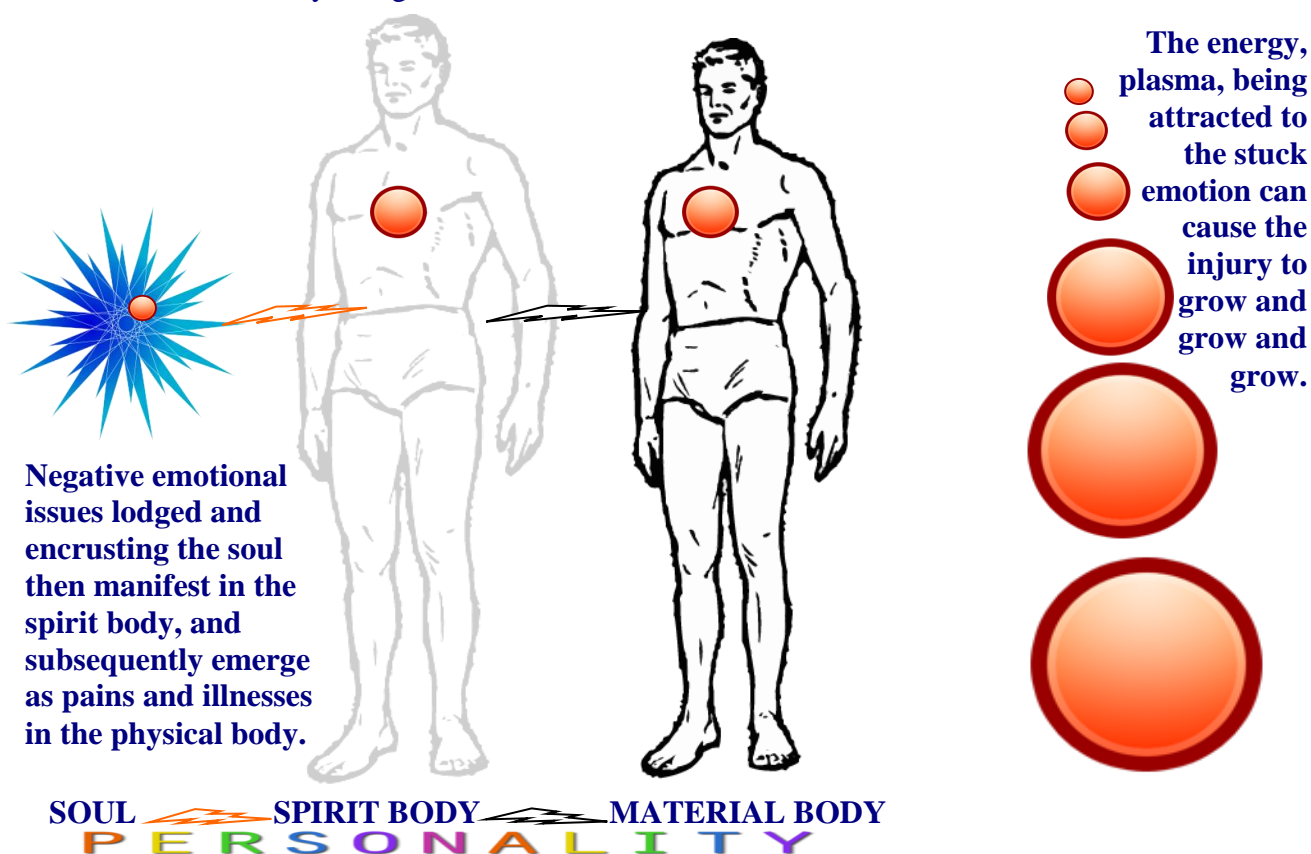


THOUGHTS having the same RATE of ENERGY VIBRATION assemble as a CELL:

It is the accumulated pressure of feelings that causes thoughts. One feeling, for instance, can create literally thousands of thoughts over a period of time. Think, for instance, of one painful memory from early life, one terrible regret that has been hidden. Look at all the years and years of thoughts associated with that single event. If we could surrender the underlying painful feeling, all of those thoughts would disappear instantly and we would forget the event.

This observation is in accord with scientific research. The Gray-LaViolette scientific theory integrates psychology and neurophysiology. Their research demonstrated that feeling tones organise thought and memory (Gray-LaViolette, 1981). Thoughts are filed in the memory bank according to the various shades of feelings associated with those thoughts. Therefore, when we relinquish or let go of a feeling, we are freeing ourselves from all of the associated thoughts. (Our memories are held within our soul / spirit body, they are not held within one's physical body, however, the damage will manifest in the physical body.)

The great value of knowing how to surrender is that any and all feelings can be let go, through the expression of them to a companion (Feeling Healing), of at any time and any place in an instant, and it can be done continuously though it can be rather difficult.

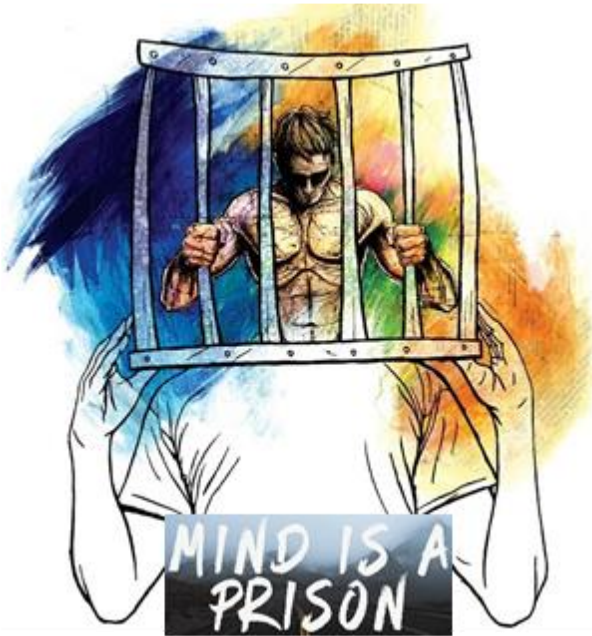


The mind is to be of service!
The mind is designed to Follow,
to be of service to the truth,
of service to the heart, and
your Feelings!



NEW FEELINGS WAY

We are enslaved in our mind.



We seek, what we think, is the best education for our children. Many send their girls and boys to the so-called best and expensive schools that subsequently further enslave the child deeper into its mind.

The world's journey of growth through its education systems has peaked. The result is a global population functioning in zombie mode, in a stupor, glued to an electronic device, all trying to be the same with no individuality, originality or self-expression.

This destiny was imposed upon us by controllers who had us go in a direction of limited development and to remain their pawns forever!

Girls and women have been singled out as they, being closer to their feelings, can see the folly of this

entrapment of limitation and perpetual stagnation.

We are to live feelings first and have our minds follow implementing what our feelings are leading us to embrace. Our feelings are our true selves, they are an expression of the personality that we are, as bestowed upon us by our Heavenly Mother and Father.

A feelings orientated education opens our potential infinitely. It is only through us living through our feelings that all the social ills that are evident throughout every community in every nation can and will be mitigated and put aside. It is only through expressing our feelings, both good and bad, and longing for the truth of them that we will heal ourselves of our childhood suppression and repression. Then we will see an evolutionary advancement of Earth's humanity that is presently incomprehensible.

The New Way: Learning how to live true to ourselves by living true to our feelings.

**FREEDOM OF
FEELINGS**

**FEELING
HEALING**

LIVING MIND CENTRIC is SUBMITTING to RETARDATION and MEDIOCRITY

Our mind is a wonderful instrument when it is used to implement what our feelings prompt us to embrace. However, our high level spiritual leaders prompted us all to believe that our potential would be found through our minds, so much so that we could become ‘mini-gods’ through the perfecting of our minds.

Our potential through mind centricity is 499 on Dr David R Hawkins’ Map of Consciousness (MoC) being the peak of Reason. This is also the peak of development of those who enter into the 1st spirit Mansion World where billions upon billions remain for aeons, blind to their entrapment to hidden controllers. Some further their mind perfection through their ongoing suppression of their feelings and progress blindly through the 2nd and 4th only to reach a dead end at the 6th spirit mind Mansion World, never getting out of the hells and entering the 1st of the Celestial Heavens. They eventually have to do a Great U-Turn and retrace their steps and then work through the 3rd, 5th and 7th spirit healing Mansion Worlds and then commence their progression through the Celestial Heavens living Feelings First.

Hidden controllers within the spirit worlds, for the past 200,000 years, have kept us in their enslavement as they understood that:

- Our minds are addicted to control, control of others and our environment.
- Our minds cannot discern truth from falsehood – thus easily led through our mind’s lack of discernment.
- Our minds are addicted to untruth – a global pandemic has demonstrated worldwide submission to a few through governmental dictates – conspiracy theories abound – nations can be easily led to war against others.
- Worshipping our minds, believing that when we ‘think’ that we discern truth when it is error, stagnates our progress, thus keeping us in submission. Education systems worldwide embrace this.
- Assumptions are the product of the mind, the error rate is around 98%. The doctrines of the Catholic Church demonstrate this to ‘perfection’.
- Feelings are our soul-based truth. Females are closer to feelings, so these hidden controllers had males make females subordinate to men. History reveals very few women leaders – look at the religious institutions.
- All religions are the product of the workings of these very same hidden controllers.
- These beliefs, patterns of living and norms are entrenched through generation after generation.
- We believe that **‘I had a pretty good upbringing’ in comparison to other people!**
However:
 - Parents have NO understanding of Love.**
 - Parents have NO understanding of Law of Free Will.**
 - Parents have NO understanding of blocking emotions.**
 - Parents have NO understanding of causal / core emotions.**
- Hidden control has kept parents from knowing how to be loving true parents, consequently:

Parents abandon Children emotionally!

- And the Rebellion against God, love and truth has progressively evolved and intensified to the point that on 31 January 2018 intervention from even higher level spirits has formally ended the Universal Contract governing the Rebellion and Default of the rebellious Lanonandek spirits led by Lucifer who submitted to his female soul partner’s wily assertions.

MIND IN CONTROL

This is how it is!



FEELINGS FRIED

Great U-Turn

Feelings
in Control

This is how it is to be!

Mind in Support



We are being screwed by our Minds!



We are Truth Seekers!



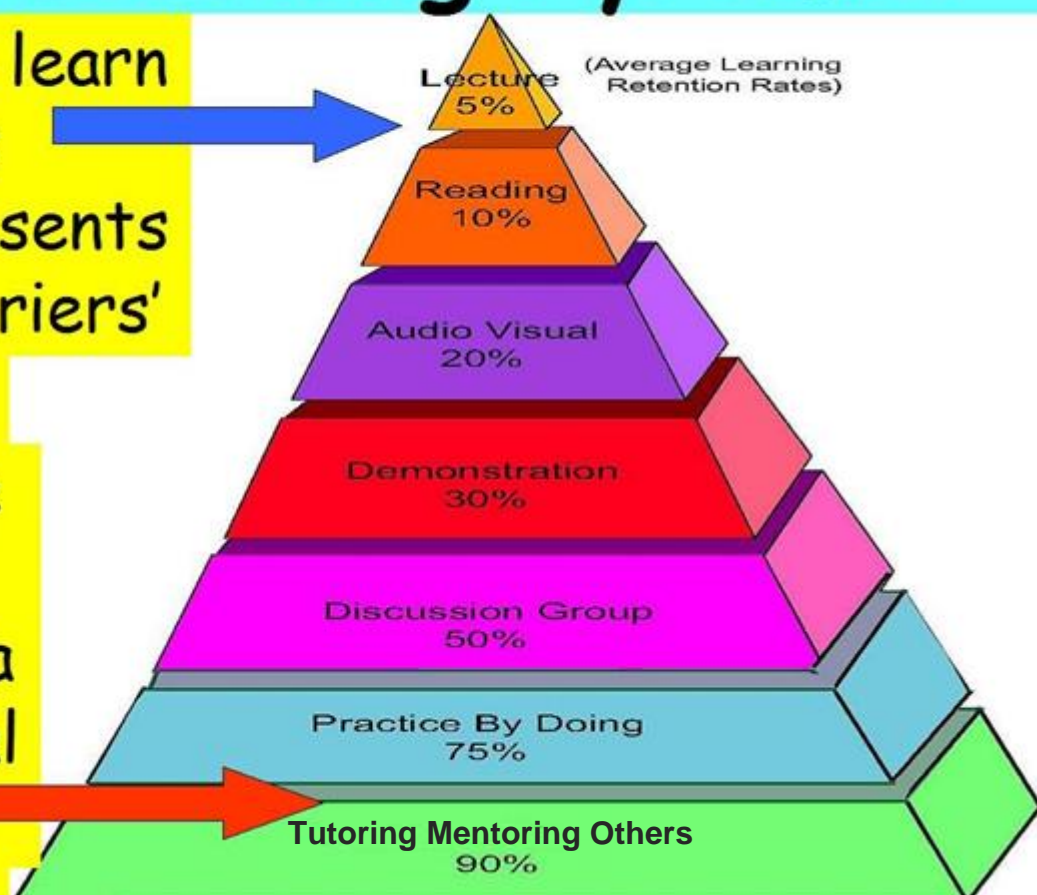
Heart felt
feelings are the
Truth of our Soul

Disney PIXAR
SOUL

The Learning Pyramid

Trying to learn using this often presents many 'barriers'

Effective Learning requires a great deal of this



100% retention is **Natural Self Expression**

The Golden rule is:

Never interfere with another's will.

One must always honour another's will as one honours one's own.

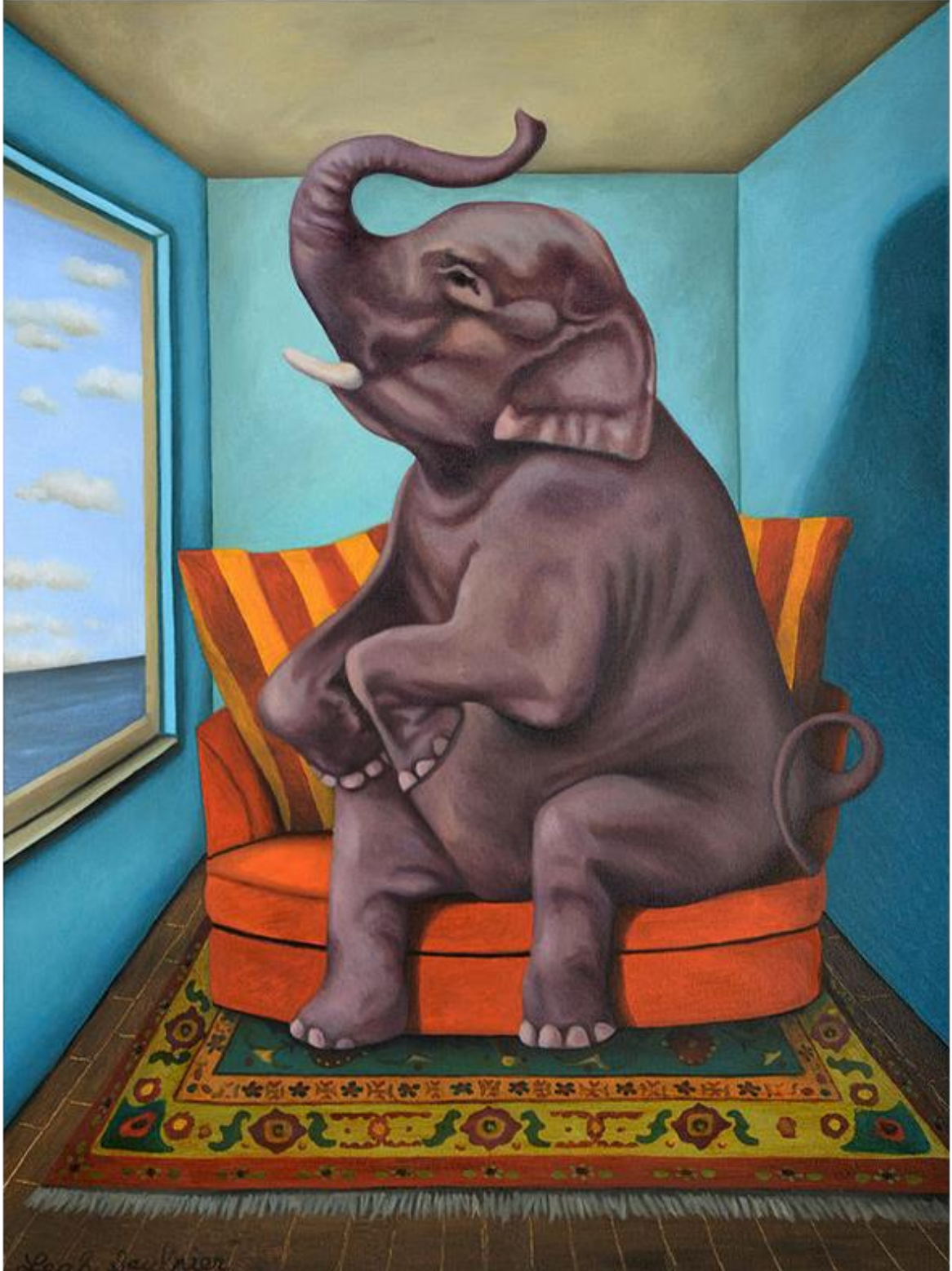
We fear our childhood memories!



Intimidating verbal abuse

TERROR

Childhood Suppression is the elephant in the room!



The underlying generator of all discomfort, pain, disease and illness is Childhood Suppression and ongoing Repression.

Feeling Healing is our only recovery and soul growth pathway.

It is that simple!

Childhood Suppression

The soul does it all.
The soul is a duplex,
two personalities being
manifested into the
physical by our soul.

Soul light continually
flows from the soul
through our spirit body
levels and into our
physical.

Return light being the
experiences of our
physical existence.

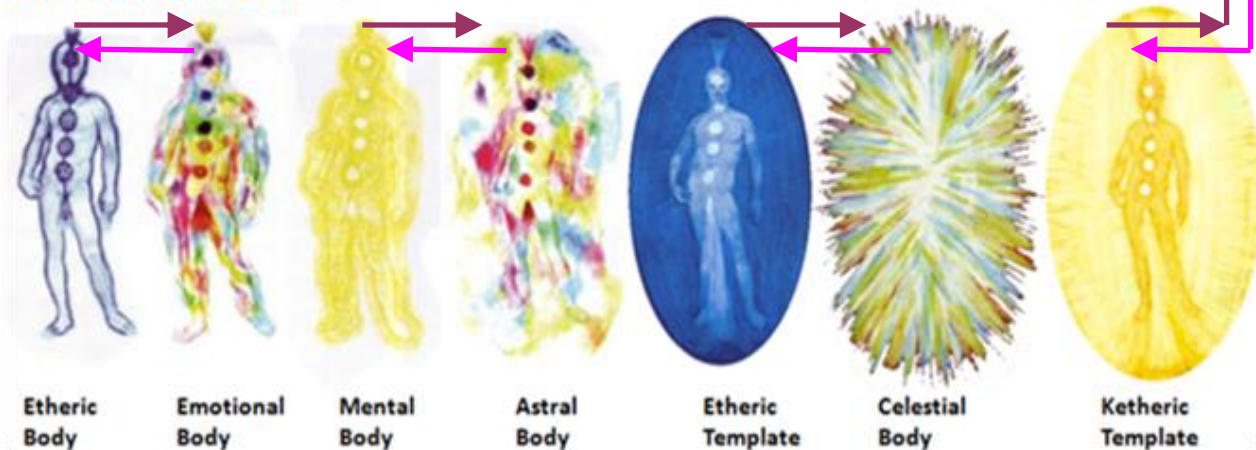
SOUL



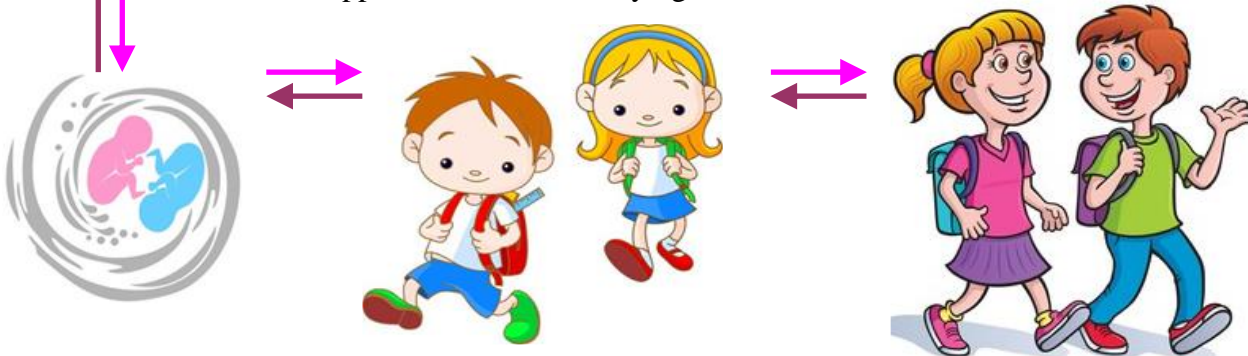
Childhood suppression
imposed upon us by our
parents and carers
causes retarded light to
return to our soul
bringing about
imbalance, reflecting
emotional injuries and
errors of belief. This
imbalance is the cause
of all our difficulties
throughout our adult life
and also all of our health
issues.

SPIRIT BODY

Brennan Model of the 7 Levels of the Human Energy Field



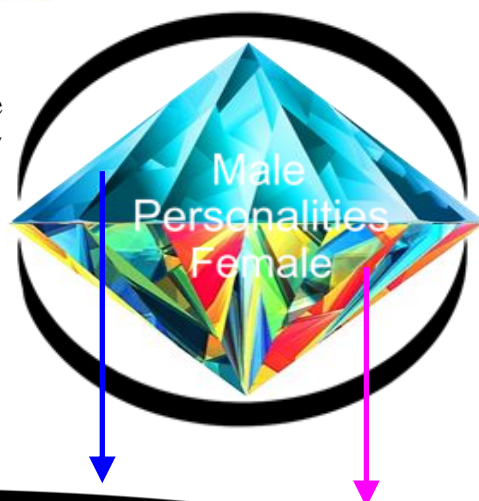
Every experience is recorded through the light returning through our spirit body and back to our soul. What emotional injuries we experience, commencing from conception, has to be expressed emotionally to heal the imbalance in soul light so that harmony and health can be achieved in our spirit and physical bodies. Childhood Suppression is the underlying cause of disease, illness, etc.



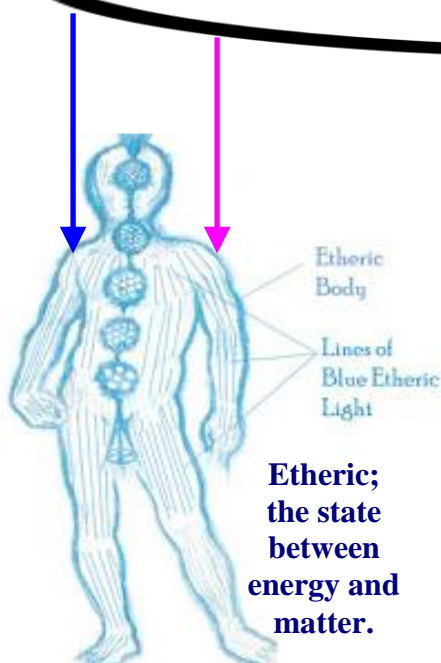
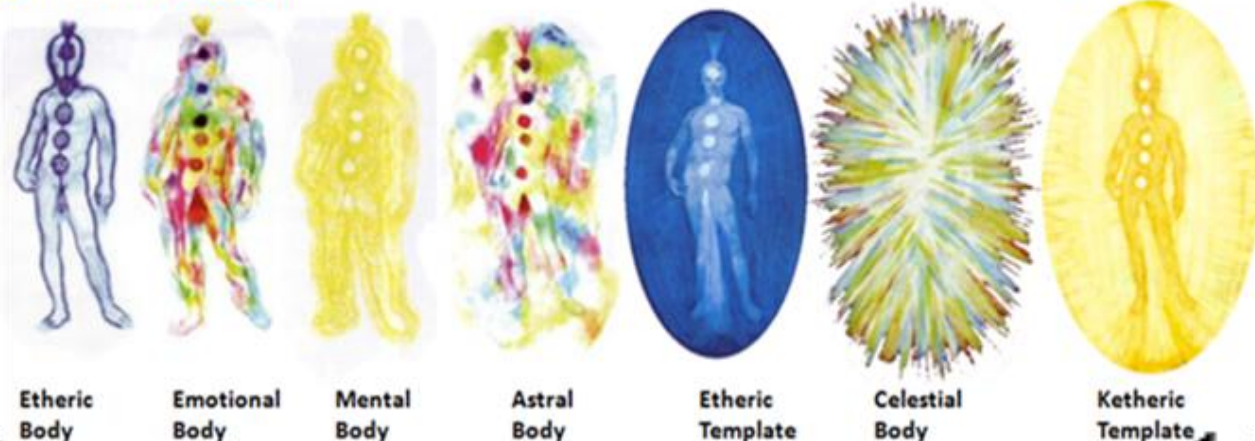
Childhood Suppression



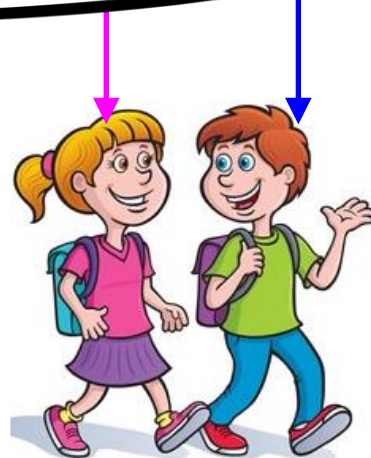
Childhood Suppression – from conception to age six years – harmfully encrusts the soul, thus impeding light flow throughout all seven layers of the spirit body, damaging the genes within the spirit body which in turn damages the genes in the physical body, as well as setting the pattern for all of our physical health issues throughout our lives.



SPRIT BODY Brennan Model of the 7 Levels of the Human Energy Field



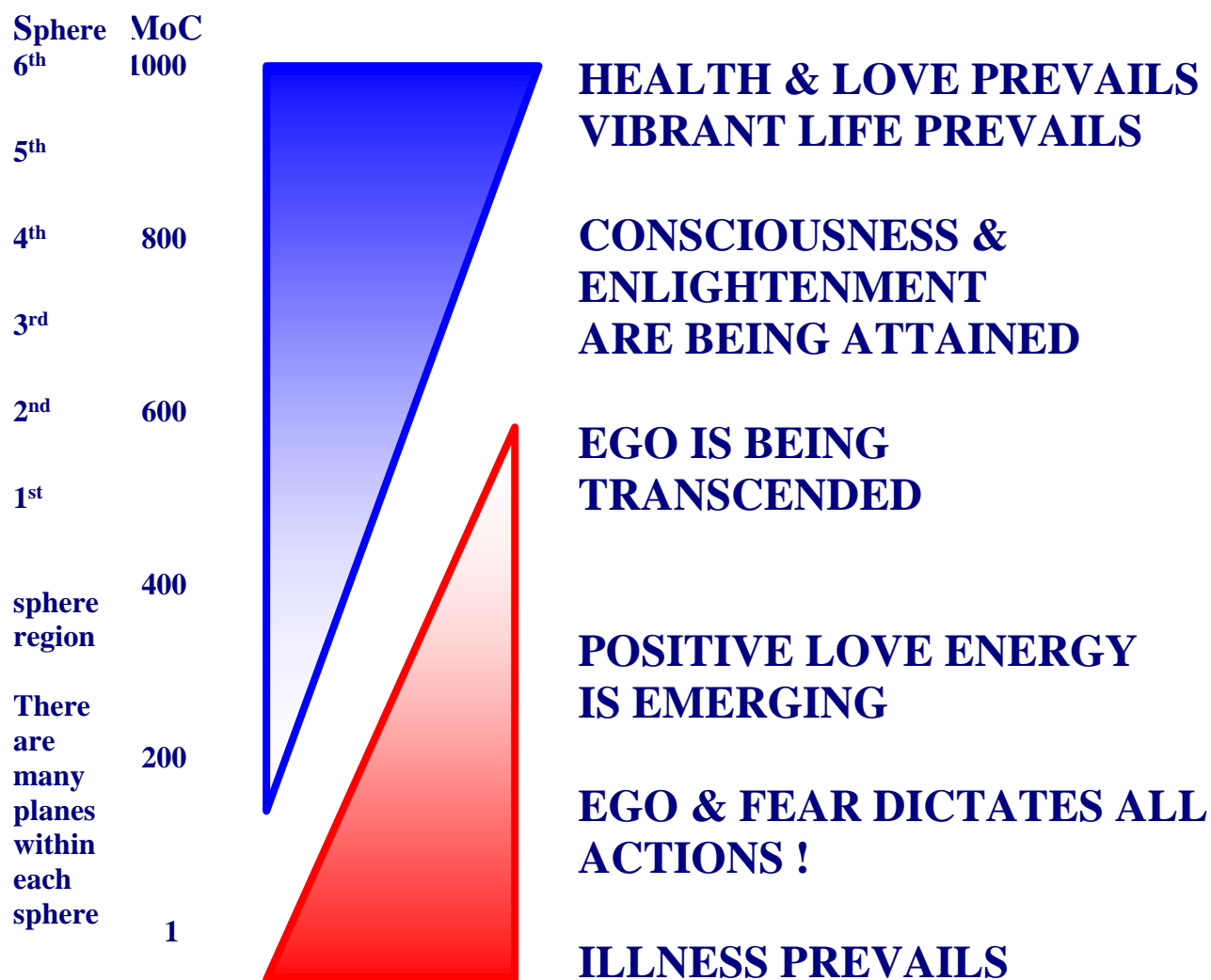
The spirit etheric body is the template for our physical body, however, no health care system or science considers that the underlying cause of any health issues are formed through our Childhood Repression and that no physical healing occurs without expressing our childhood suppressions, being feelings both good and bad and then longing for the truth behind these injuries. Medicine may suppress the pain – it does not and cannot cure – vaccines are extreme physical suppressions!



The pain from ANY illness will not exceed the pain experienced during our Childhood Suppression!

“All dis-ease is mind generated, and all healing is generated by the love energy of one’s soul.”

The Ego (mind based) manifests illness; the lower one’s level of consciousness (soul condition) then the more prevalent will be illness. Below the levels of 200, the ego and fear of the mind dominate; however, as you raise your level of consciousness by growing in love and achieve a level of 500 or higher, you begin to transcend ego dominance. At the level of 600, all healing is possible.



To liberate one’s real self, one’s will, driven by one’s soul, moves one to embrace Feeling Healing so as to clear emotional injuries and errors. With the Divine Love, then one is also Soul Healing. We are to feel our feelings, identify what they are, accept and fully acknowledge that we’re feeling them, express them fully, all whilst longing for the truth they are to show us. It is Feeling Healing with Divine Love that one progresses through the Divine Love Mansion Worlds 3, 5 and 7 and enters the Heavens.

Root Cause

Highly esteemed Lanonandek spirits from within our local universe of Nebadon were assigned as System Sovereigns of our local system to oversee Earth's humanity and their spiritual development. 200,000 years ago they, the Lucifers, became infatuated with their authority and turned against the regents of Nebadon, Mary and Jesus, as well as rejecting God. Through their Planetary Princes, also Lanonandek spirits, they had taken the humanities of 37 worlds within their local system into their Rebellion.

Through living through our minds, suppressing our feelings, we on Earth will continue to be at war with each other, illnesses of all descriptions will continue from our feelings suppression, famine and inequalities prevail, control of others is the core of all systems, we cannot determine truth from falsehood and life on Earth is a living hell. We have been continually seduced by mind Mansion World spirits and we live life in a stupor – nothing more than zombies doing the begging of the evil ones, the rebellious Lanonandek spirits.

Through living through our minds, suppressing our soul based feelings, we have been progressively going further and further away from our Heavenly Parents, now to the point that we cannot go any further. Through working cracks in the Universal Contract governing the Rebellion and Default, this control has been ended formally as of 31 January 2018.

Pathway Forward

To liberate one's real self, one's will, driven by one's soul, moves one to embrace Feeling Healing, so as to clear emotional injuries and errors. With the Divine Love, then one is also Soul Healing. We are to feel our feelings, identify what they are, accept and fully acknowledge that we're feeling them, express them fully, all whilst longing for the truth they are to show us.

God's Divine Love: Pray for it, ask for it, and receive it.

The Golden rule is: Never interfere with another's will.

Golden Rule: that one must always honour another's will as one honours one's own.

New Feelings Way: learning how to live true to ourselves by living true to our feelings.

We are to express our feelings, both good and bad, at all times, and to long for the truth of them.

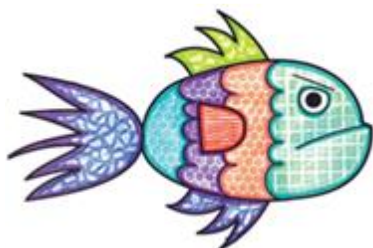
By living true to ourselves true to our feelings, we are living true to God. It's that simple.

LONG to KNOW ABOUT what you are FEELING!
Long to understand the truth behind
what your feelings are pressing upon you.



Ask to know the truth about that which you feel.

It is knowing the truth of that
which you feel that sets you free!



Always be true to your feelings
because they are your truth
and truth is love and our way home!



Express your feelings to those who matter to you.

Suppressed feelings bring about pain and illness.

Talk it out to a friend!

*From our head to our toes,
what our feelings say goes!*



Feelings, good and bad, are to be expressed.



Talk it Out!



Heartfelt feelings are our truth.

We are to Find the Truth of our Childhood.

James Moncrief – Sunday, 8 September 2019

We are to Find the Truth of our Childhood.

That's it; and find it through our feelings by directly connecting, feeling, experiencing, and most importantly, knowing they are true by being them. We ARE our childhood, the truth is already there, it is already within us, we are already living it, we don't have to look anywhere else for it other than within ourselves. All of why you are what you do, say and live, everything about how you are and how you conduct yourself in life, is all what your childhood was. You grew into being the adult you are because of the childhood you had, we can't be a different adult that's not a direct and complete product and result of our childhood. And if you take away the time element, we are still our childhood, our life is still manifesting how it was for us as a child. We can believe and pretend all we want that we are different to how we were as a child, that having become adult we can leave our childhood behind and move on becoming the adult we want to be. No, we think we can do that, yet we can't. We can't do anything that's not already done, we are still effectively living our childhood and being as we were in it, and that's within all the different times and phases of it, all which adds up to being one big, often contradictory, mess of ideas, beliefs and opinions about ourselves.

And we can't be anything else other than what we are, which is how it was for us through our childhood, yet we fail to see it because we're not fully connected with those parts of ourselves and all the corresponding feelings that will help us see it. So we are to find the truth of ourselves – hence: the truth of our childhood. Because in knowing the whole truth of our childhood and being it, being aware that we are it, connects us as adults fully with ourselves back then. You know how it was for you, because you feel it, your feelings tell you, show you, and there's no avoiding or denying them, because they are expressing (by making you feel) the truth of how it was for you, how it has always been since conception, and how it will remain until the Mother and Father transform you out of your untrue state – out of your unloving childhood.

So our Healing is about finding the truth of ourselves from the beginning, which equates to the truth of our whole childhood, because it's our childhood that made us be as we are. And because we were so heavily interfered with and prevented from being our natural true selves, so we have to 'Heal' all the damage that was done to us. Healing ourselves by seeing the truth of ourselves. So by acknowledging all our feelings, and by wanting to find and uncover the whole truth of our childhood, we work progressively deeper into ourselves, bringing to light all that happened to us to make us be as we are. And part of that is to help us see how much of our childhood and forming was true and loving, and how much was untrue and unloving.

And presumably, once we've brought to light within us the whole truth of our childhood, then the good, true parts, those founded on true love, will remain; and the bad, that which was founded on untruth, will be transformed out of us by God through our soul.

As a forming and developing child, we don't have enough of ourselves to find and so experience the whole truth of what's going on. But as adults we do. And if we grew up in a fully true and loving situation and environment with only loving and true relationships, then as an adult that's how we'd be feeling completely loved and true, happily wanting to bring to light all the positive influences that affected us through our childhood, all of which would be a very enjoyable and loving experience. Whereas because we grew up in rebellion against Truth and Love being forced to be mostly untrue and unloving, and even possibly completely untrue and unloving, then it's not enjoyable going back bringing to light and expressing all our hurt and pain.

We start out not knowing anything about how it is for us through our childhood; or at best, a minimal amount as some people and families are more feeling expressive and self-aware. And through our Healing we have to get to know it all, because we are it, so we're getting to know ourselves – which for many people will equate to getting to know their shit-start in life. And once we've brought to light the truth of our childhood, then we can leave it, moving on bringing the truth to light of being a true adult. Which is what The Urantia Book means by saying we become true universal spiritual citizens once we are living a Celestial level of truth. So the Mansion Worlds are really provided for us to uncover the truth of our childhood, to see how it was for us, and consequently, how we lived as a child. And they are really only for that, and not so much for us to set about righting all that we find out is wrong within us. We are to only see and so uncover the truth of ourselves. As far as fixing ourselves, or changing or transforming ourselves, that is up to God.

The Mansion Worlds are called probationary worlds, ones in which we can settle the Law of Compensation within our untrue states and continue living against ourselves and the Truth, furthering our truth and self denial; and ones in which we can do our 'Healing' to see the whole truth of our untrue state. Which we can now do either in the Mansion Worlds themselves, or on Earth.

So there is no avoiding the truth of your childhood if you want to ascend beyond the Mansion Worlds. And the fact that none of the spiritual or religious systems on Earth are wholly devoted to helping people bring to light the truth of their childhood through their feelings, shows what a terrible state we're all in. Imagine if the whole world was focused on helping everyone bring to light the hidden truth of themselves, and so the truth of their childhood. It certainly would be a different way to live and so a different world we'd live in.

We can't actually fix anything from our childhood. We can't, only God can. And God will when we've brought to light all the truth of it that God wants us to see. We can undergo therapy (and some truth might come to light), go to the doctor, do whatever we do trying to feel better, all trying to get rid of our bad childhood, all trying to fit in with the beliefs we have from our childhood of how we should be in the world, yet it's only at best scratching the surface. God, through our soul, won't allow us to change anything from our childhood anyway, at least not until we've seen and brought to light and fully connected through our feelings with all the truth of it. There'd be no point God subjecting us to such horror if we could make it all go away before we found the truth of what it was all about and why God made our childhood as it was. So we can do a little, or so we think, adjusting ourselves this way and that, however even those adjustments we come to see through our Healing are 'allowed' because we're still just doing them within our prevailing childhood patterns. And there are what seems like endless levels within us of which we're composed, which you would expect because of the enormity of being God's children, and so there's quite a scope for us to move or play around in entertaining ourselves by believing we've changed the foundations and results of our childhood. So as we can't actually change ourselves, all we can do is want to uncover the truth of our childhood and live that truth. All of which involves vast amounts of self-acceptance, which gradually comes with the truth, growing in the acceptance that this is how you are, how God wants you to be having this experience, given the childhood you had, and there's nothing you can do about it. Other than keep on expressing every feeling that comes up, as you long for the truth of your childhood, wanting to live true to yourself.

How is it for you if you are Truly Honest with Yourself?



- ♥ You truly love your children, devoting yourself to them, wanting nothing more than for them to grow up and be as they want to be?

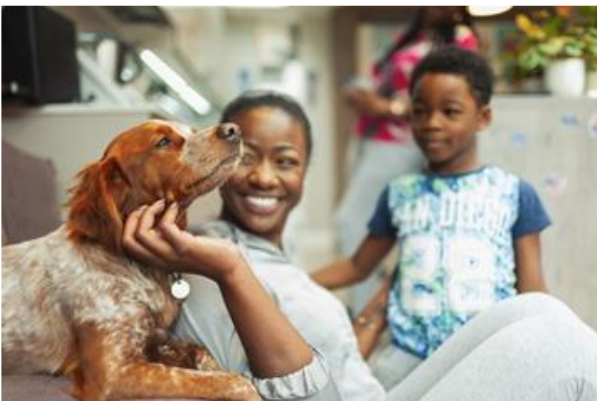
- ♥ You believe you truly love your children, believing you are devoted to them, wanting them to be as you want them to be?



- ♥ You love your child more than you love your pet?



- ♥ You love your pet as much as your child, treating it as if it is another child?

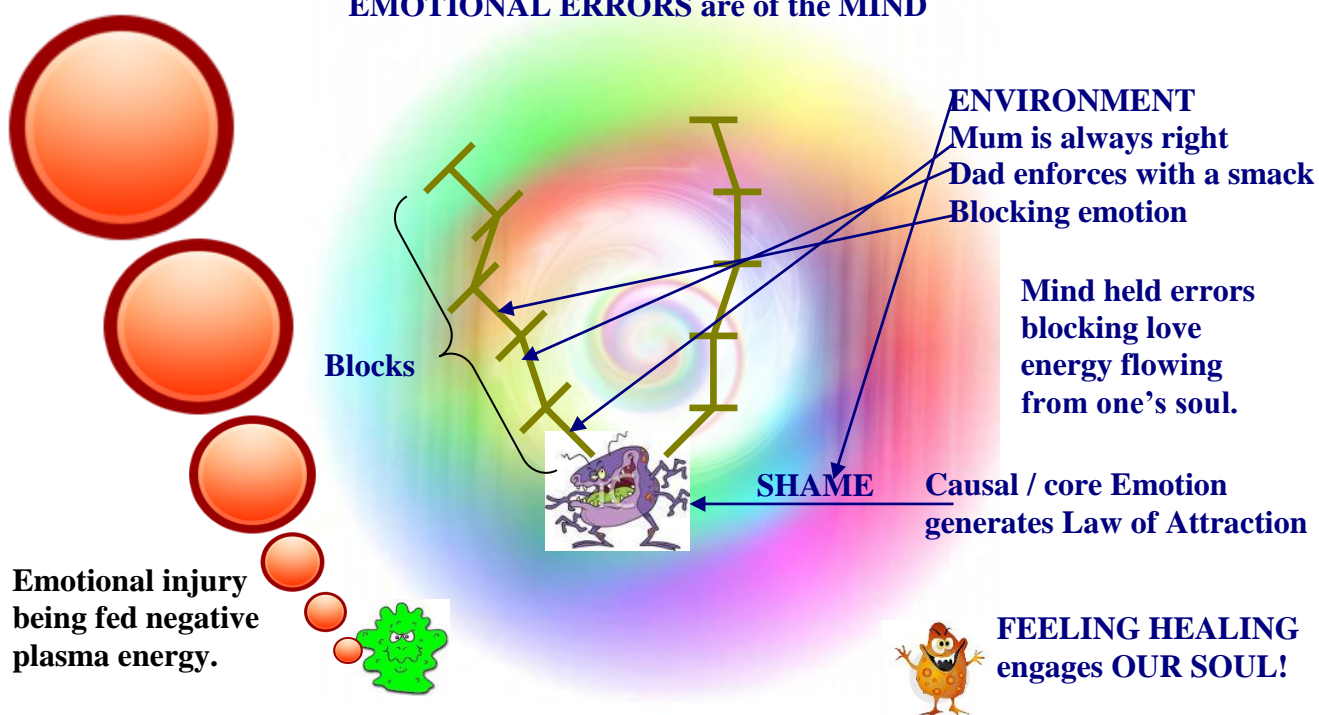


- ♥ You love your pet more than your child?



By living true to ourselves, true to our feelings, we are living true to God. It's that simple.

EMOTIONAL ERRORS are of the MIND



Enters emotionally - is to leave emotionally!

**WHAT ENTERS EMOTIONALLY
IS TO BE EXPRESSED
EMOTIONALLY WHILE LONGING
FOR THE TRUTH TO BE KNOWN
ABOUT WHAT IS BEING FELT!**

To All the Suppressed Kids who are Dealing with the Consequences now as Adults...

The feeling of being rejected, disapproved of and conditionally loved by our primary caregivers – parents – is a monumental, long-lasting burden that we all carry. It produces chronic shame, guilt and anxiety. As a child we are blamed for doing things wrongly and in doing so we perceive ourselves as being bad, inconsequential, and having to embrace a persona that is not our true selves. We abandon our feelings expressiveness and embrace our minds to live life in the world foreign to truth and love. Our parents murder our free expression of our feelings and true personality! There are no exceptions.



Discomfort, Pain, Illness and Depression.

Verna, a Nature Spirit, 17 April 2020: Nature isn't randomly popping up viruses that might suddenly sweep through affecting humanity 'evilly'. The Rebellion and Default are the true viruses that we are all 'infected' with. Viruses are more of the spirit really, which is why they are so elusive. If our soul needs to give us the experiences of the virus we will 'catch' it. Other disease, like cancer, and the breakdown of the physical structure is again wholly physical however they are the physical manifestations from the breakdown of our spiritual light in our spirit systems.

All illness results from our inner levels of discontentment – BECAUSE WE DON'T FEEL LOVED.

Should every soul, all at the same time, need the experiences from a virus to feel all the feelings we need, then it will be **different feelings for every person**.

Humanity is to uncover the truth of evilness, its wrongness, of its rebellion and default. And illness is to show us that we are wrong. We wouldn't get sick if we were right. ILLNESS IS OUR FRIEND. It's all about what went into us through our forming and early childhood. All the secrets are contained back there within ourself. When we 'go in' we're to go into our early life through our adult 'now' feelings.

Corona, 24 March 2020: "There is no way on earth I (Corona) can possibly be worse than how your parents treated you, it just can't happen, I can only affect you as far and as badly as your parents affected you. I can't create more pain in you than your parents have already created.

"The extent of unloving parenting that you all had to endure as children is now killing you, that is the truth of how bad it was. It is killing you because you refuse to understand what is happening, you refuse to connect to your pain, you still refuse to accept the truth and this is the open door for me (Corona) to enter into you and find a cell for me to live off and mutate and multiply in you. Your denied and suppressed feelings let me in.

"Stop resisting me and work with me in what I want you to know about yourself. I am no greater pain than the pain you felt and denied as a child.

"You fear me killing you, making you feel so bad, yet isn't this all so familiar, isn't this how you felt with your parents at times in your life? Isn't this how they made you feel, only they didn't allow you to feel it fully, only a tiny portion of the pain they inflicted on you, with the rest you were forced to deny and keep suppressed. And this is what I 'feed' on, all your repressed misery and pain. It is your parents you fear, and I am helping you feel that truth.

“Your parents forced you to do their will and gradually your own will got left behind not being considered at all by your parents. And that is how I have to work with you all, and you will all feel me differently depending on the severity of your will denial and suppression.

“You were parented by two of the same Viruses, they are the Virus that is within you right from your conception and took away your will just as I am doing to you now. I am treating you the same way as your parents treated you as children and you refused to see it, so denied it.

“I am reuniting you with the truth of how hurt and unloved you feel because of your unloving childhoods. You all have the power to turn this around and all you have to do is to begin feeling how I am making you feel, accept every feeling, express every feeling and find the truth through your feelings. Do this and I will lose strength and lose the hold I have over you because I no longer have to make you feel so bad to make you feel your feelings. You have the cure within you all and that cure is YOUR FEELINGS!!” (These are extracts from Corona speaking through a nature spirit to Samantha.)

The spiritual upliftment so far as the new ‘vibration’ humanity will experience is the new vibe of the next age, and it’s upliftment will only be uplifting those people who chose to do their healing, to submit to their bad feelings and by expressing them to uncover the truth of their evilness – all that resulted from our childhood.

If we all Heal ourselves, being of true and perfect Natural love, then by living in harmony with nature, which we would naturally be doing, such horrendous diseases would not afflict us, because we would not need them to show us that we are disharmonious with nature.

When we are fully Healed, we won’t need to get sick, the Celestial spirits don’t get sick, they don’t have the bad feelings as we do on Earth and in the mind Mansion Worlds, and so we won’t need to have those feelings that would come from an illness, so we won’t get sick.

EVERYTHING that happens to us does so to help us live one of two ways. So we will ‘get a virus’ to help us go further into our truth-denial; or we will get one to help us come out of it.

Our bodies are designed to live anywhere, even in the most infested disease ridden place on the planet, and we will get sick if we need that sickness to further our truth-denial, or we will get sick if we need it to help us heal our truth-denial, or we simply won’t get sick. There is NO OTHER REASON why we get sick!

If we are going to get sick, that will happen either way because we are already sick within ourself and from how we were treated through our childhood – there are no other reasons. We are sick because we are denying the truth of ourself and God. We are all very ill being in the Rebellion and Default. **The Rebellion and Default are the true viruses that we are all ‘infected’ with.**



My individual "Rebellion and Default" is my overarching virus!

The Rebellion and Default are the true viruses that we are all 'infected' with. Viruses are more of the spirit really, which is why they are so elusive. If our soul needs to give us the experiences of the virus we will 'catch' it.

Other disease, like cancer, and the breakdown of the physical structure is again wholly physical however they are the physical manifestations from the breakdown of our spiritual light in our spirit systems.

All illness results from our inner levels of discontentment – **BECAUSE WE DON'T FEEL LOVED.**

Should every soul, all at the same time, need the experiences from a virus to feel all the feelings we need, then it will be **different feelings for every person.**

Humanity is to uncover the truth of evilness, its wrongness, of its rebellion and default. And illness is to show us that we are wrong. We wouldn't get sick if we were right. **ILLNESS IS OUR FRIEND.** It's all about what went into us through our forming and early childhood. All the secrets are contained back there within ourself. When we 'go in' we're to go into our early life through our adult 'now' feelings.

EVERYTHING that happens to us does so to help us live one of two ways. **So we will 'get a virus' to help us go further into our truth-denial; or we will get one to help us come out of it.**

Our bodies are designed to live anywhere, even in the most infested disease ridden place on the planet, and **we will get sick if we need that sickness to further our truth-denial, or we will get sick if we need it to help us heal our truth-denial, or we simply won't get sick. There is NO OTHER REASON why we get sick!**

If we are going to get sick, that will happen either way because we are already sick within ourself and from how we were treated through our childhood – there are no other reasons. We are sick because we are denying the truth of ourself and God. We are all very ill being in the Rebellion and Default. **The Rebellion and Default are the true viruses that we are all 'infected' with.**

Enters emotionally - is to leave emotionally!

We are to express our feelings, both good and bad, emotionally!

Childhood Suppression is the underlying cause of all physical illness and social issues seen throughout society.

NO PROBLEM CAN BE SOLVED
FROM THE SAME LEVEL OF
CONSCIOUSNESS THAT CREATED
IT.

-ALBERT EINSTEIN

EINSTEIN'S THEORY of INSANiTY



DOING THE SAME THING
OVER and OVER and
EXPECTING DIFFERENT
RESULTS.

Journey of Earth's Humanity

Years ago:

993,500 **Andon and Fonta - aspire for human perfection.**

950,000 **Andonites reach Tasmania - southern Australia.**

500,000 *Caligastia - Lanonandek - appointed Planetary Prince
Daligastia manifests on Earth with staff
Sangik Family - Northern India - 6 colours*

200,000 *Lucifer - Lanonandek - rebels against Jesus & Mary
Caligastia draws Earth into Rebellion*

38,000 **Adam and Eve manifest on Earth
Adam and Eve default their mission**

1980 BCE **MACHIVENTA MELCHIZEDEK MANIFESTS**
Commences end of Rebellion & Default

7 BCE **Jesus of Nazareth born**

2 BCE **Mary of Magdalene born**
Creator Daughter & Son Bestowal

1914 - 1923 **Padgett Messages - second coming**

1925 - 1935 **The Urantia Book - history of humanity**

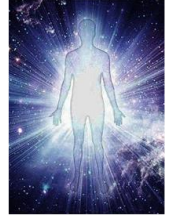
1944 CE **Bretton Woods Conference - funding**

2002 - 2022 **James Moncrief - Revelations**
Avonal Daughter & Son Bestowal
Avonal Age of 1,000 years begins!

Living Feelings First growth potential is

Our Feelings are our Supreme Guide! Truth is found through our feelings, we are to long for the truth about what our feelings draw our attention to. Our soul based feelings are always in truth. We are fully self-contained. This simple fact has been hidden from us for 200,000 years while our hidden controllers, the evil ones, kept us under their selfish controlling agenda.

Living through our feelings first with our minds to follow in assisting with what our feelings guide us to consider is a rewarding, freeing and vibrant life. Whereas we all have been retarded through living mind centric.



Living through our Feelings First, the New Way, and longing for truth of what they are to reveal, expressing what we feel, both good and bad, will enable us to progress through the Feeling Healing Mansion Worlds while living on Earth. With Divine Love we will be fit to enter the Celestial Heavens and progressively then through all the Celestial Heavens of our local Universe of Neadon and then onwards to Havana and Paradise, the home of our Heavenly Mother and Father.

Not only will we progress beyond 1,000 MoC when transitioning into the 1st of the Celestial Heavens, by the time we reach Paradise we will have progressed to what could only be described as infinity – well not quite – but we will be truly awesome in our evolution and development.

Living mind-centric limits growth to 499 MoC

We all live through our minds! We all suppress and ignore our feelings. This has been how we have been led to live by high level spirits who had ambitions of self glorification to our detriment. These wayward spirits had allusions of expansionary empowerment and they needed Earth's humanity as their foot soldiers! Through their deceit, we would continue to live in spirit as we do on Earth without any prospect of progressing out of the spirit mind Mansion Worlds.

Should we continue with aspirations in the perfecting of our mind then we can progress from the 1st spirit Mansion World to the 2nd mind spirit Mansion World, then 4th and finally 6th mind spirit Mansion World to a dead end. In these higher worlds we may appear to be guru type personalities but we have gone further away from God – we have then perfected our evilness!

The mind can even stave off the time when the Law of Compensation is addressed.

A U-Turn is required and then one would commence embracing their feelings and progress through the Feeling Healing Mansion Worlds 3, 5 and 7. With Divine Love then on completion of the 7th spirit healing Mansion World process we transition to the 1st of the Celestial Heavens.

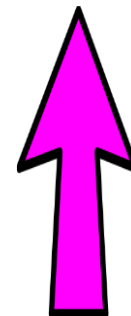


While we suppress and ignore our feelings we are living in hell and putting ourselves through untold misery, pain and suffering when we can achieve healing to the level that we are living as Celestials while in the physical on Earth!!!

Ascension of Truth to Paradise

ASCENSION of TRUTH to PARADISE

DIVINE LOVE – Feelings in control – FEELINGS WAY
 DIVINE CELESTIAL HEAVENS – CELESTIAL SPHERES
 UNITING with SOULMATE / SOUL PARTNER and SOULGROUP
 BEING DIVINE, ETERNAL, IMMORTAL, FUSION with INDWELLING SPIRIT



THE FEELINGS WAY ** LIVING A FEELING-LED LIFE **

Transformation of soul from **Perfect** Natural Love to being **Divine** – being of **Divine Love**.

Transformation of soul from **Imperfect** Natural Love to being **Divine** – being of **Divine Love**.

Transition from Mind to Feeling way of living

NATURAL LOVE – mind in control – MIND WAY
 SEVEN MANSION WORLDS

We have to do our: SPIRITUAL HEALING
 (FEELING HEALING)
 (SOUL HEALING)

Uncovering the truth of feeling Unloved

IMPERFECT NATURAL LOVE
 REBELLIOUS
 REBELLION AND DEFAULT

Against Truth and Love
 Living Untrue; against ourselves
 Denying many feelings
 Become Truth to being untrue
 Imperfect relationships
 Feelings of love within an unloving state

LIFE ON EARTH
WHAT WE ARE LIVING
AN UNLOVING LIFE

Self-Acceptance

No Healing needs to be done
 Being true and loving
 All done with Natural love
 Uncovering the truth of feeling loved

PERFECT NATURAL LOVE
 NOT REBELLIOUS
 NO REBELLION OR DEFAULT

Not Against Truth and Love
 Living Truth; not against ourselves
 Not denying any feelings
 Become truth to being true
 Perfect Relationships
 Feelings of love in loving state

LIFE ON A PERFECT WORLD
 What we wish we were living
 A Loving life



THE MIND WAY ** MIND-LED LIFE **

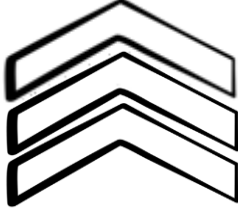
We are to move from our mind way to a feeling way of life within our rebellious and untrue state. We are to live truth to our being untrue, knowing and being the truth of why we are untrue.

GREAT U-TURN

The CHOICE is OURS to MAKE:

Celestial Truth:

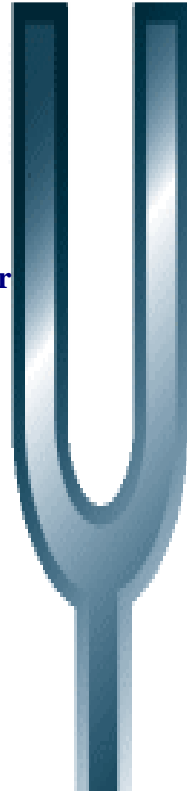
Truly all-loving;
Living true to oneself;
Mind supporting Feelings;
Living with the Divine Love;
Fully Healed of the Rebellion and Default.



THE FEELING WAY

Feeling – Ascendance
Unlimited progression

- ♥ Living true to your untruth;
- ♥ Honouring all your bad feelings;
- ♥ Expressing feelings to uncover their truth;
- ♥ Healing the Rebellion and Default within yourself;
- ♥ Feeling unloved; being unloving;
- ♥ Feeling as bad as you can feel;
- ♥ Feeling like you are no one special;
- ♥ Longing for the Divine Love.



THE MIND WAY

Mind – Transcendence
Limited progression

- Enlightenment, Nirvana, feeling all-loving;
- All false, mind-contrived. Anti-truth, anti-love;
- Still evolving the Rebellion and Default within yourself;
- Feeling and believing you are the Superior One;
- Living with your mind in control of your feelings;
- Living rejecting all your bad feelings;
- Living with your mind contriving you feel loved;
- Rejecting the Divine Love.

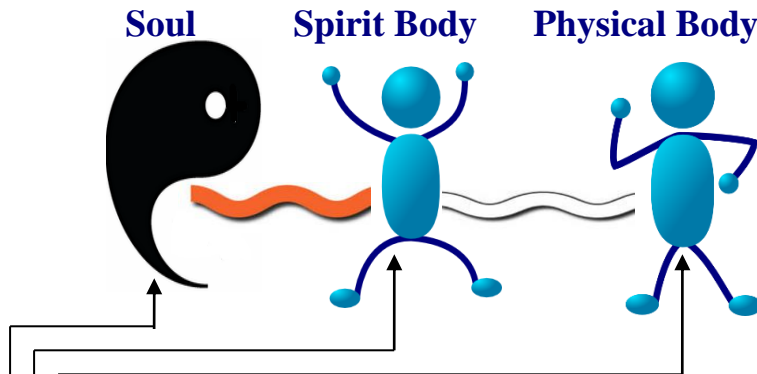


All religions, New Age, agnostic,
atheists, no spiritual interest,
Living the Rebellion and Default.

Hell:
Exploiting the Rebellion and Default.

The Feelings are the doer; the Mind the teller. So we are to go with our feelings, which we can't be told to do with our mind. So the longing for the Divine Love, doing our Healing by expressing our feelings and longing for their truth, are all feelings and doing it with longing. Whereas the mind just wants to tell us what to do and how to be, no feelings in it, all how our parents have treated us.

HIERARCHY of HEALING SYSTEMS



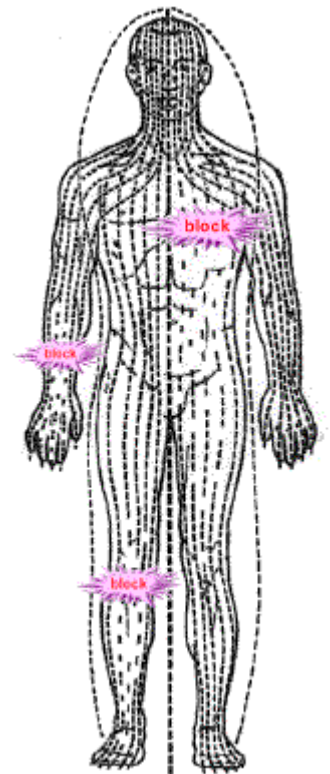
ALLOPATHIC – Western Medicine treats the symptoms, is highly regulated and costly as it is cost driven. Symptoms are suppressed – no healing!

ENERGY HEALING – Eastern Therapies also treat the symptoms with the assistance from natural love spirits from the realms up to the 6th spirit Mansion World.

Therapy applied to the spirit body is through an energy therapist who may work on the chakras, whereas a chiropractor works on the physical body. Such types of therapy deal with the effects and ignore the soul and the causes – temporary healing.

FEELING HEALING – EMOTIONAL EXPRESSION addresses the cause. Soul level clearing and growth provides permanent solutions whereas the other two systems provide temporary relief.

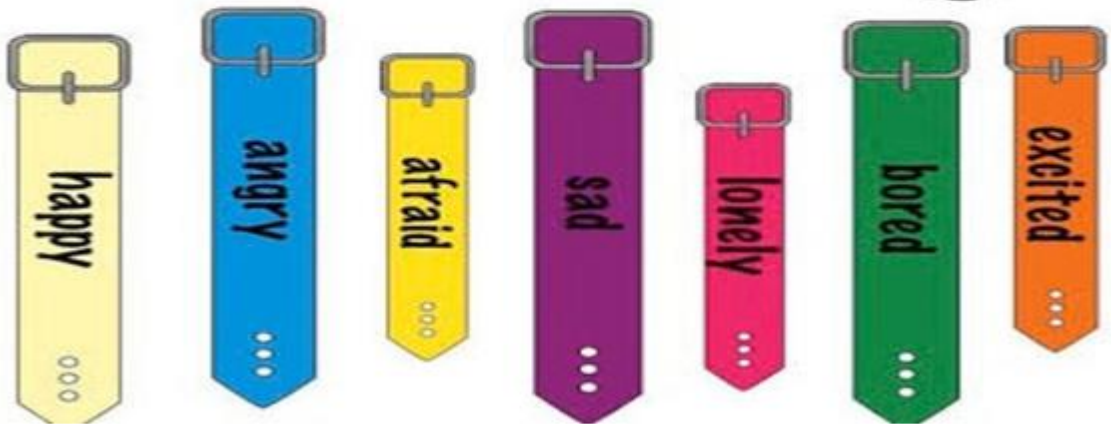
If we focus on our childhood suppression, that is the commencement on our pathway home to our Heavenly Parents. Improving our soul condition is the ultimate goal.



The one and only truly effective vaccine is the healing of our Childhood Suppression and ongoing Repression through **FEELING HEALING!**

FEELINGS
must be
FELT

Express Your Feelings



**BE FEELINGS
EXPRESSIVE!**

It's all about
**Experiences
&
FEELINGS**



TALK IT OUT



We are to express our feelings, both good and bad, and nothing is sacrosanct or to be withheld.

All that's wrong and untrue within us has to be expressed out of us, each of us, it all has to come to light for us to see the truth of. We have to know the truth of ourselves and the truth of our family relationships.

Everything needs to be expressed, to come out into the open.

What enters emotionally has to be expressed emotionally – it has to come out emotionally – leave us emotionally!

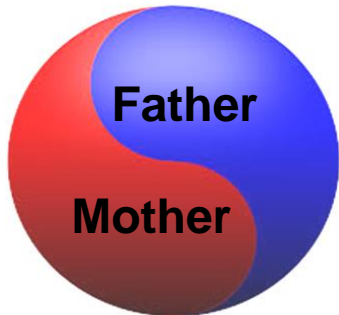
However, we are not to act upon what we are feeling emotionally! We are not to act it out! But, we are to go on and long to know the truth of what is behind our feelings, why we are having these feelings and experiences.

Long to the Mother and Father for Their Divine Love, and ask Them to help you see the truth through your feelings – that which They want you to know. Long and ask; long and pray. Pray to see, know and BE the truth, the truth of you – of all of it!



Presently REJECTED!

GOD



HEAVENLY PARENTS



JESUS & MARY



AVONALS

REJECTED

REJECTED



REJECTED



REJECTED

REJECTED



REJECTED

REJECTED

Mind, control, power dominating!

**Through our Feeling Healing,
now we are to embrace them all!**



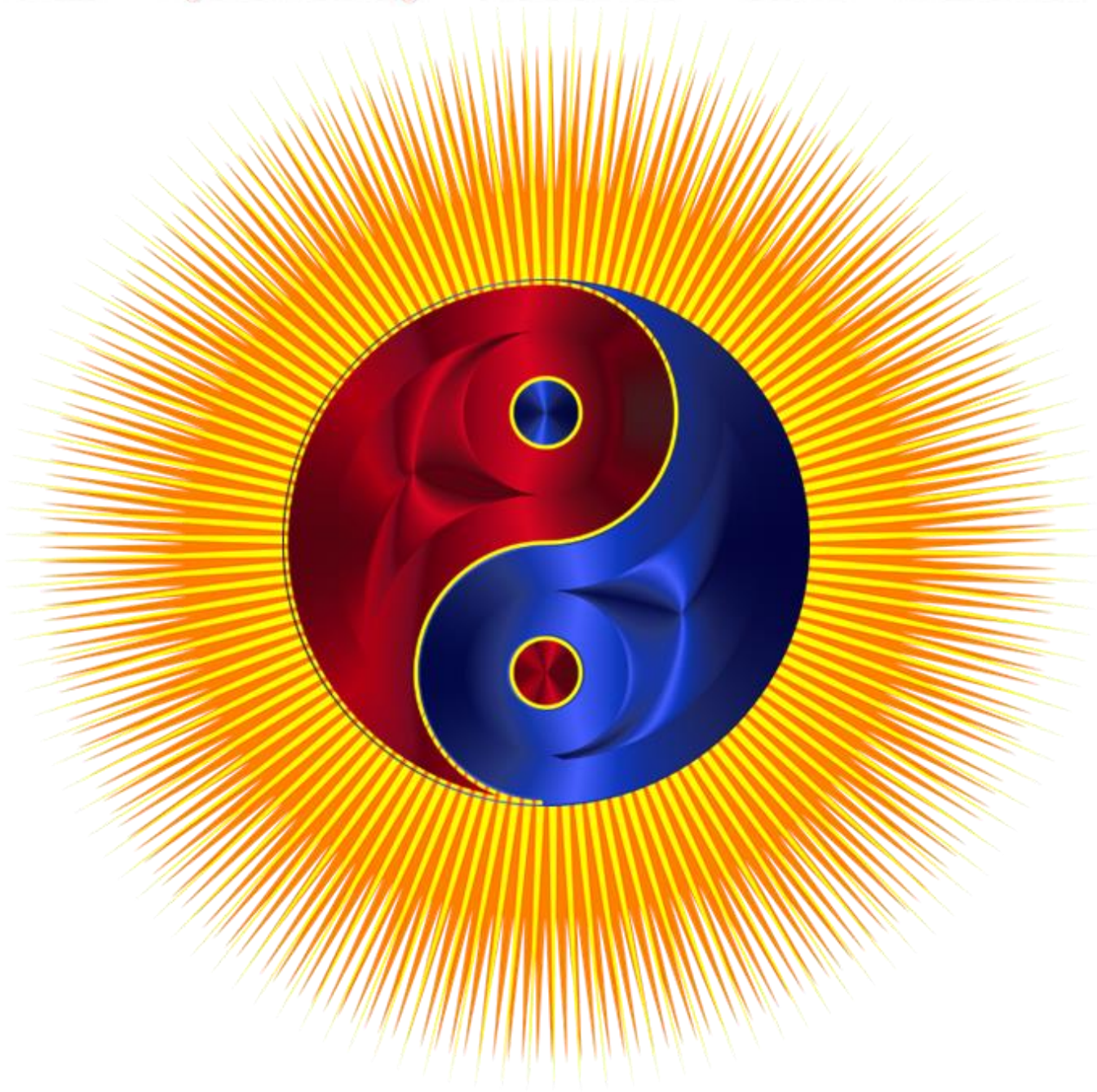
WILL! The Soul does everything!



WILL Healing

Our HEALING is one long act of Self-Love!

Our Heavenly Mother and Father



Paradise Trinity

Heavenly Mother
and Father
'Love'



Eternal Son of 'Truth'

Infinite Daughter of 'Mind'

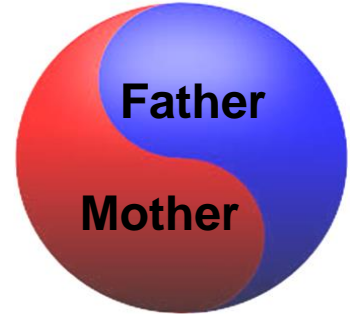
Jesus and Mary's soul are different in design than ours. They are a Creator Daughter and Son, or similarly referred to as Michael Daughter and Son soul, and within their soul is expressed only the two of the Primary Aspects of Deity. They are of the Mother and Father, our Heavenly Parents and the Eternal Son. Avonal Daughters and Sons are expressive of the Eternal Son and Infinite Daughter.

The core of humanity (us mortals of Earth) is of the Truth and Mind, and then with the addition of the Indwelling Spirit, we can then relate to the Love.

And with the Avonal pair now on our world (Earth), they too expressing the Son of Truth and Daughter of Mind, we actually are far better suited to relating to them than we are to Mary and Jesus.

MUM & DAD THIS WAY

GOD



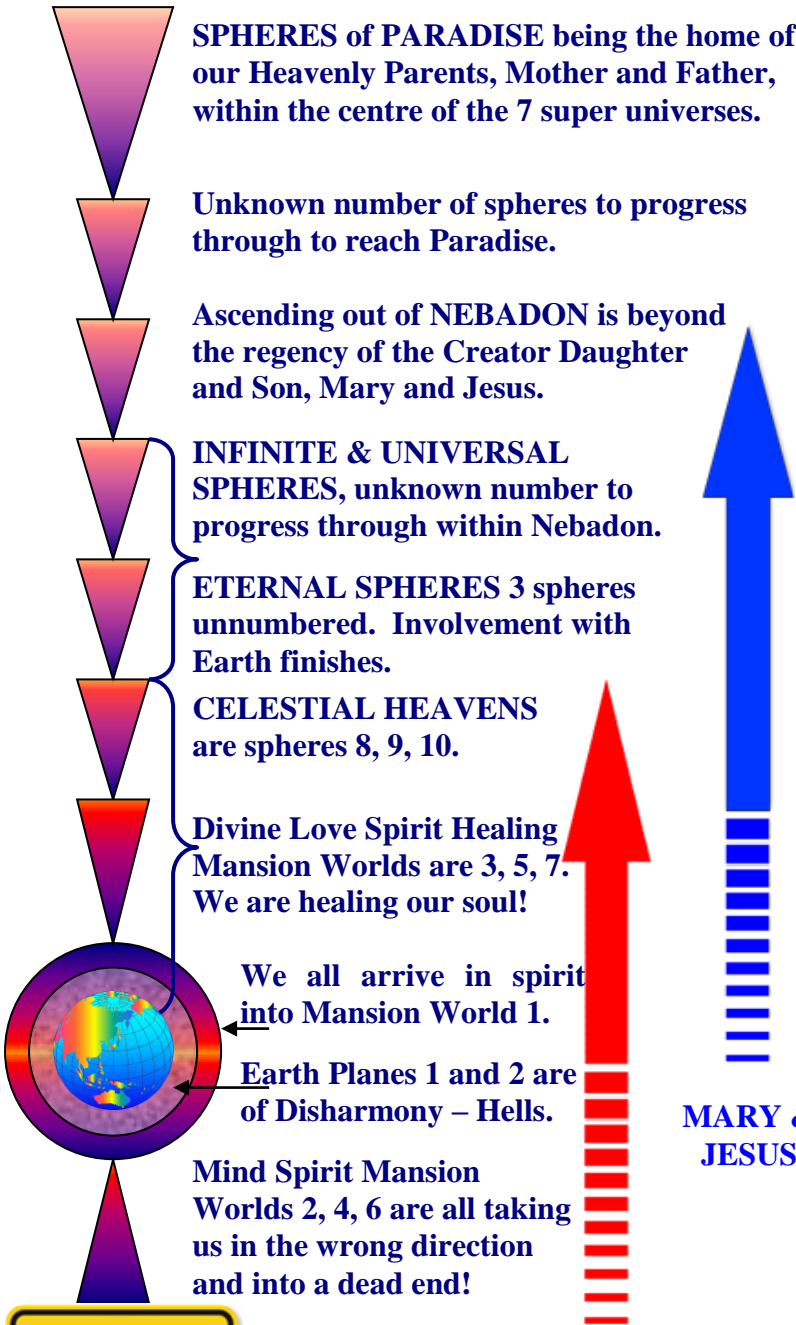
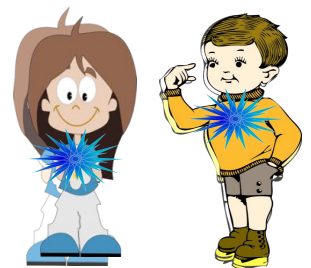
HEAVENLY PARENTS



JESUS & MARY



AVONALS



I'D TURN BACK IF I WERE YOU!

MARY & JESUS

AVONAL PAIR

GOD

Throughout the Avonal Age of 1,000 years, their Spirits of Truth will assist us in embracing and engaging with our Feeling Healing and with Divine Love our Soul Healing. They will assist us to develop our soul well into Celestial Heaven status should we persevere with such a goal. The extent to which the Avonal Pair develop themselves while here in the physical on Earth is the level that their Spirits of Truth will be able to assist us. Then it will be Mary and Jesus' Spirits of Truth that will assist us up and out of Nebadon, where our Heavenly Parents will then assist us onto Paradise, Their home.

BEING SPIRITUAL

James Moncrief

10 December 2021

We are spirit beings in a flesh body, when we die our physical body dies and we wake up fully conscious in our spirit bodies in the spirit Mansion Worlds. We are living unconsciously now in our spirit body, as we live consciously focused in our physical body.

We are a soul that is expressing two personalities in Creation. You are one of the two personalities of your soul, your soulmate or soul-partner being the other personality of your soul. When you achieve living a certain level of truth, your soul will bring you together for the rest of eternity, this usually being once you've finished our Spiritual Healing.

Currently we are all born in Rebellion by Default against the truth of ourselves and against the truth of God. We are wrong, untrue and imperfect, even though we want to believe we are right. To become right, true and perfect we have to bring to light the truth of our rebellious state. This we do through our Spiritual Healing.

We do our Healing by attending properly to our feelings, by ending our mind control over them, ending our denial of many of our bad ones, expressing them all with the emotion of them, as we long for the truth our feelings are to show us about ourselves.

Being spiritual is expressing all of ourself (all of our personality) lovingly in life. It involves becoming wholly aware of all we are through all we feel. It is liberating our repressed childhood feelings so we can come to understand what parts we are not being expressing truly, which parts of we are in rebellion against our soul. It involves breaking down our erroneous beliefs, ending our unloving and uncaring negative behaviour, whilst coming to see the truth of why we have such beliefs and do such bad things to ourself and other people.

It's about how we are treating ourself, because of how we were treated as a child by our parents. And uncovering the truth of our relationship with our parents and family, and seeing if any of it was indeed loving as we might feel and believe it was, or if it wasn't loving.

Being Spiritual is then fully expressing ourself lovingly in all our relationships. It is about the evolving truth of the relationship with ourself, other people, and with God. Nothing else.



Our incredible journey!

God, our Heavenly Mother and Heavenly Father, does it ALL. They are All There Is. Creation all comes from Them. They created our soul and gave us the life we're living. They make us live all we experience, nothing is up to us, They only make it seem like it is. And currently They want us to experience being untrue and living against Them.

They bestow our personality upon our soul, and being a personality we live under the impression that we can determine how we want our life to be. We use our mind to make moment to moment decisions based on our feelings and how we believe we should be. And yet on a soul level our Mother and Father determine our so-called free will. Existentially on the soul level, there is no free will, everything is predetermined; whereas experientially on the personality level, we believe everything is up to us, that we have almost complete free will. Life shows us as we awaken to its truth, that we live a relationship between these two levels.

Many people believe God is good and loving, and the Devil or Evil is the opposite to God. As if there is the personality – God, and the personality – Devil, however the Devil has no personality, it doesn't exist. There are higher Evil Spirits, the 'Evil Ones' who rebelled against the Mother and Father and chose to take matters into their own hands in a small part of Creation in which Earth exists, thereby causing humanity to become of their Rebellion by Default; and unwittingly we carry on living untrue to ourselves and true to the evil ones. We are to understand, God wants us to be evil, God has put us in the Rebellion that is of God's making. Our loving God makes us feel bad and unloved, all because God wants us currently to experience living against the truth of love. And when we've experienced being evil all we need to experience, God will help us start our Spiritual Healing, thereby ending our evil ways.

Lucifer, Satan, and their soul partners, and other high Evil Spirits, are very real and have up until recently been able to exert a negative control over humanity. Christians believe they are on the side of good and are always having to keep vigilant about being coerced into the ways of Evil by the Devil. However all of us are evil, all religions are against the Truth, we're all of the Rebellion, no one has as yet been conceived free of it.

Really it is the battle against our 'evil' parents: They said we were wrong and bad and had to change ourselves to being as they were, which was 'right'. Yet we as young children we were not bad and they should not have forced us to change and go against ourselves.

Negative Spirit Influence blocked	22 March 2017
Law of Compensation quickening	22 May 2017
Rebellion and Default officially ended	31 January 2018
Feeling Healing completed	12 April 2022

GREAT  **-Turn**

GOOD VERSES BAD

James Moncrief

10 December 2021

We grow up in good verses bad, one or the other, which are you? We grow up in God verses Evil, whose side are you on? We look outside of ourselves into the world and make our judgements, yet really we are looking within, at ourselves, judging ourselves.

The constant internal war going in our minds is good verses bad – feeling bad and feeling good. One part of us believes and feels it is good; the other part that it is bad.

We incarnate good. God being ALL good, created us. We are intrinsically good. And if we were parented completely lovingly, then we'd grow up feeling good, always good; good being the truth of ourselves. And we'd be completely loving.

We incarnate good, however are parents are not happy with us being good, true and perfect. They say we are bad, untrue and imperfect – wrong. And they must correct us. They say God stuffed up and they have to take over and fix us up. They interfere with us being of God's perfection; they make us imperfect.

Our parents by interfering with us cause us to be untrue, bad, even evil; then they judge us and blame us for being that way – the way they have made us be. They don't like or love their creation, and keep telling us we have to change and be better, be more like them.

So we do. We apply our will to comply with and obey our parents, we change ourselves into being how they want us to be, we change ourselves from being good into being bad. But then we're not allowed to be bad, so we have to fight against ourselves being bad by trying to be good, but it's only our parents' good. We don't know what is truly good.

And so we're forever fighting against our self, criticising, chastising, ridiculing, judging, blaming, and hating our self for being bad, always so desperately trying to be good, wanted and accepted. We will do anything to feel loved, even if it means going against our self. We do anything to have our parents love, to stop them being mean and cruel to us, to stop them criticising, chastising, blaming and rejecting us, calling us stupid and dumb.

And all of this we project into the world and onto God. There is no Evil that is the equal and opposite of God. God is all loving; and then there is evil – those spirits and people like us who are going against God. We are of a Rebellion – against God and against ourselves. To uncover what is truly good, we need to do our Feeling-Healing.



Freedom Pathway being Feeling Healing

We are to live being completely true to ourselves in the moment.

If you feel good, you live true to feeling good; if you feel bad, you live true to feeling bad.

We are not to live, as we all do, by denying and then pretending we are something that we're not. We are not to live falsely and untrue as we do. We deny many bad feelings, doing all sorts of things to keep us feeling good, to stop us feeling bad; and this is wrong, this is denying we feel bad by pretending we feel good. This is living untrue to ourselves.

Being untrue, we have to live true to our wrong and false state. We have to want to know the truth of our untrue state of mind. We have to want to get to the point of being as we really are, as we really feel, so honouring, accepting and expressing all our bad feelings. We have to want to know the truth of why we are feeling them.

If you feel you hate yourself, are revolting, ugly, a failure, can't cope, are not caring and loving; feel scared, miserable and are full of anger, lonely, depressed, and powerless, desperately wanting some control, all the bad stuff, then this is what you have to fully accept about yourself and not try to push it away. Instead of doing positive affirmations, we should do negative ones when we feel bad, allowing ourselves to as bad as we feel we are.

I'm not
faking
being sick,
I'm faking
being well

We need to know, and so be, how we really are, living feeling fully connected with our bad state we're in. We have to own it. We are in a negative and untrue state of mind, so we have to be fully aware of and connected with ourselves in that state. We are living against ourselves, so we have to understand why and what that means, what it feels like, how it all came about through our childhood, and how we express it in all our relationships.

Being spiritual is uncovering the truth of how you really are, how you really feel; it's not creating some nice acceptable mind-created picture of yourself. And being that truth, no longer trying to avoid it. By living true to all your feelings, expressing them and really wanting to see the truth they will show you about yourself, is how you do your Spiritual Feeling Healing so as to live true to your untrue state of being.

And when you are truly yourself, allowing yourself to be all the bad parts and without trying to do anything to cover them up and keep them away, then you move on out of being untrue and into living in a true state. Then once in that true state of being, you will keep living true to it, feeling very good, happy and loved, all the good feelings of no longer living against yourself.



Your feelings are the key to your spiritual growth. They are the key to your well-being.

It is through your feelings that you grow in truth; that you become more aware of yourself. This is doing your Feeling-Healing.

Your bad feelings are just as important as your good feelings.

Most people do all they can to block out and stop themselves feeling bad.

Yet to deny our bad feelings so heavily is to deny ourself the truth about ourself they will show us.

We can't properly spiritually grow if we are denying our bad feelings.

Spiritual advancement begins by accepting ourself – so accept you feel bad.

We are to embrace and acknowledge all our bad (and good) feelings as we feel them. We are to stop denying them; stop trying to block them out, dismiss them, override them by using our mind to change our feelings. We feel bad – so feel bad. We feel miserable, scared, sad, lonely, angry, unwanted, disrespected, hurt, and so on, so allow ourself to feel those feelings, and to feel them as fully as we can.

By allowing ourself to embrace fully all our feelings is the greatest act of self-love; denying any feeling is the greatest act of self-hate.

As we accept our bad (and good) feelings, we then try to 'bring them out', to express them, to say how bad we're feeling, to tell ourself, God, our partner or friend. We open our mouth and emote the feeling, going with it, saying all it makes us want to say. And ideally we keep saying all it makes us feel until we stop feeling it. However, it can be hard work and very difficult to keep expressing such deep pain, so we do as much as we can at any one time. It all has to come out of us, rather than keeping it in.

And as we're accepting and expressing our bad feelings (and good ones), we long for the truth of why we're feeling them. Really want to know why. Understanding that they will take us back into our childhood with our parents and family, all so we can understand that the bad feelings we're feeling now are the exact same bad feelings we felt back then. And now as an adult we can understand why we felt them back then as a young child, what was going on in our relationships with our parents, and were such relationships loving and good for us, or hurting us, were unloving, rejecting and denying us. And this is the truth we have to want to understand about ourself. And our feelings are the key. And this is 'being spiritual' – it's growing in the truth of ourself.

Enters emotionally - is to leave emotionally!

Important recommended reading is:

by James Moncrief

The Rejected Ones – the Feminine Aspect of God

<http://divinelovesp.weebly.com/my-free-books-and-free-padgett-messages.html> ALSO at
<https://www.pascashealth.com/index.php/library.html?file=files/opensauce/Downloads/MEDICAL%20-%20SPIRITUAL%20REFERENCES/Rejected%20Ones%20via%20James%20Moncrief.pdf>



PARENTS are GOD

James Moncrief

10 December 2021

As children, our parents are our gods. A parent can do no wrong. The parent is perfect. We are made to obey them, be grateful; we have to do as they say. Only the child is wrong. They make us be how they want us to be – for our own good. Is it cruel child abuse?

They hurt us, reject us, call us evil – the naughty little devil; humiliate us, make us feel miserable, sad, scared, alone, angry, unloved; even hate them, because that's what we need, according to them, to make us able to deal with and cope in the world – with them.

And they make us love them. We have to love our parents, because if we don't, look out! And our survival depends on it. So we tell ourselves, as we tell them, we love them. We love them as we love God. God is really just our parents. We can't do without them. Our Mother and Father God is our mum and dad. Do we hate God or love God?

The parent has all the power. The parent is powerful. The parent has a child to have power over it. The child is powerless. In our rebellious state of mind, being a parent is the ultimate controlling power trip, even if you are a more genuine caring and loving parent. The child feels powerless, even if it is given a little power by its parents.

We, as powerless children, grow up doing all we can to gain power. By becoming a parent ourselves is now our chance to have ALL POWER over our children.

The cycle repeats. The powerless becomes the powerful causing the next generation to feel powerless, who in turn have to become parents so they can feel powerful.

The grandparent gains even more power; over its own child and over its children's children. The grandparent is the God of the God's. So the child feels even more powerless; powerless with its parents, powerless with its grandparents. So as an adult it desperately seeks power. It MUST have its own children at all cost, because it can't remain feeling a loser, a failure, a powerless nothing, forever.

We don't truly love ourselves; so we can't truly love our children. We can believe we love ourselves; as we believe we love our children. And so do our children truly love us?

What is the truth of your parent/child love, and your child/parent love? Doing your Feeling-Healing is the only way to find out. Provided you do want to know such truth.



RELATIONSHIPS

James Moncrief

10 December 2021

It's all about relationships. The relationship with ourself, our parents and family, with our friends and partner, with nature, and with God.

It's about whether we are true in our relationships, which means, whether or not we are truly expressing all we feel, so all of ourself, in each and every interaction. And if we are not true, then wanting to find out why. Which we can do by doing our Spiritual Healing.

Our Healing will take us through our feelings into the truth of all our relationships – current and past. It will help us understand the relationship of our mind to our feelings, whether or not our mind is working against or for us, what our erroneous beliefs and bad unloving and negative behaviours are. All so we can come to see why we are the way we are, why we are loving or not loving, and how we came to be as we are because of the relationships and their influences we had as a child.

As an adult, our primary relationships, those with our parents and family, are what have determined and keep determining our relationships with ourself, nature, other people and God. And those early relationships will keep driving our adult relationships until we do our Spiritual Healing wanting to uncover the truth of them.

If anything is wrong in our life, if anything about ourself makes us feel bad and unhappy, if any part of us, or all of me / you, is unloving, that's all because it was how we were made to be through our early forming years and the rest of our childhood.

If our relationships are good and successful, our feeling fulfilled and loving in them; or if they are bad and unsuccessful, our feeling let down, disappointed, unfulfilled and wondering why we can't have good relationships, it's all because of how we were treated as a child. Any problems we have, any illness, any bad things that happen to us, all do so because of the emotional and feeling patterns established throughout our childhood. As an adult we live cycling through our childhood feeling patterns. So our relationships being emotionally good or bad, are the same as how our childhood relationships were emotionally and on a feeling level. Through our relationships as an adult, we will keep reliving all the same childhood feelings we felt with our parents and family. And if we're happy in our relationships, good; but if we're not, then only through our Healing will we be able to change such feeling-patterns once we've uncovered the truth of them.



SCARED of FEELING GOOD

James Moncrief

10 December 2021

We incarnated feeling good. But very soon we were made to feel bad. Our parents made us feel bad many times as we were forming and growing up through our childhood. How many times did your parents make you feel bad? And how many times did they make you feel good? And have you worked hard to block out many of the bad times?

For many people, they actually felt bad more than they felt good. And many of the so-called good feelings were only times of reprieve between the bad. They grew up on feeling bad. So bad is what they know, bad is what they are used to, bad is what they expect. And yet they also do all they can to keep feeling good, blocking out the bad.

And they might hate this, fighting it within themselves, always trying to do things to make themselves feel good, yet always ending up still feeling bad. Do you feel good, only to do something to ruin the good feeling and make yourself feel bad again?

We've been made to be scared of feeling good. We need to keep feeling bad. We feel better feeling bad, even though we hate feeling bad and only want to feel good.

We learn to 'bring it on' so we can feel bad. We say the wrong thing, act in the wrong way, resist being good and loving, all because it's how we believe we should be, how we should feel, all because that's how it was for us as a child. How you are – this is how it was for you as a child. And how it will always be, until you do your Feeling-Healing.

A great part of our Healing will be to allow ourselves to feel bad, to accept our bad feelings, to understand that is how our parents made us feel throughout our childhood.

And allowing yourself to feel bad is very difficult, even if we already feel bad. And we might be faced with feeling bad for many years through our Healing, feeling hurt, rejected, unwanted, uncared about, miserable, sad, angry, scared – so many endless bad feelings. Yet these are all the same feelings we felt through our childhood, and they all have to come out. And once they are out of us, then we won't feel bad anymore, as we will understand the reasons why we felt them – the truth of them.

We are not to reject our bad feelings, as they were rejected by our parents. Our parents made us reject our bad feelings, so we follow their lead and also reject them. It's not being self-loving. It's self-hating. So love yourself by allowing yourself to feel as bad as you do.

Feeling bad is good!

The most important part of all our lives is to uncover the truth of our childhood.

And we do this by doing our Spiritual Healing.

By attending to our feelings properly: completely accepting our bad feelings, expressing the full emotion of them, whilst longing for the truth they are to show us about ourselves and our relationships with our parents and family.

We can't spiritually grow or grow as a person unless we uncover the truth of our childhood through our feelings.

We have to find out through our repressed childhood feelings if our relationship with our parents and family was loving or unloving during our childhood. During it, which parts were we treated respectfully, with care and with love; and during which parts were we made to feel uncared about, disrespected and rejected, hurt and unloved.

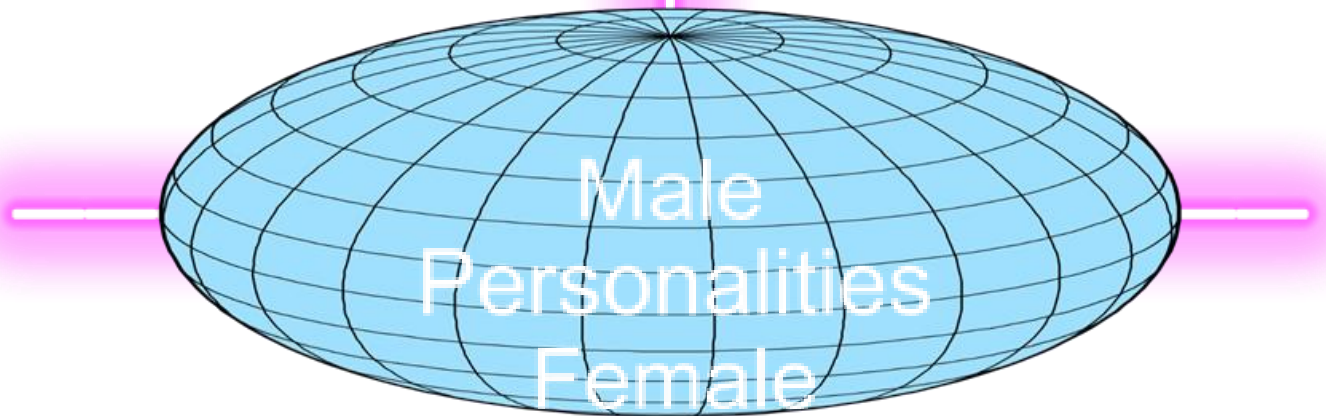
We have to break down the untruth of our mind and its erroneous beliefs that cause us to live in a false state: that our relationships with our parents were loving when perhaps they weren't. We all want to believe we love our parents and they love us; however, is the love you feel for and from your parents true love, or only a love fabricated by our mind? This is the truth we must want to see about ourself and our relationship with them.

Everything bad that happens to us, any problems we have, why we get sick, any bad feelings we have, why our relationships might fail, all comes from our unloving childhood. Once our childhood finishes, we are complete, living by repeatedly cycling through our set childhood feeling patterns. The exterior of our life, what happens to us and what we create through our adult life, is nothing more than living out how it was for us as a child. The basis for being a so-called success or failure in life, was all established through our childhood. It was all determined by our parents loving or unloving relationship with us.

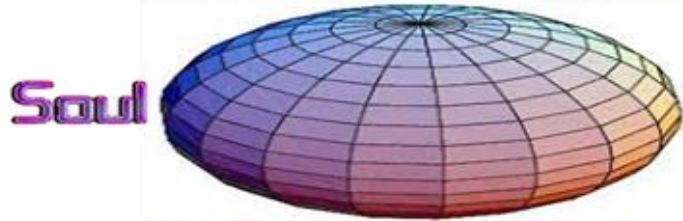
We can never fully heal ourself unless we want to uncover the whole truth of our childhood. We can look into bits of it, get more in touch with some early trauma, some of which might help to explain why we are feeling bad and why we are trapped in our addictive and self-abusive behaviour. But not until we uncover the **WHOLE** truth of our childhood through our feelings, will we be finally be set free of it – will we be free of all our pain.

Feeling Healing sets us FREE!

SOUL is a DUPLEX



**SOUL PERSONALITY
FEMALE or MALE**



Eternal Son Infinite Daughter
TRUTH **MIND**



Indwelling Spirit
Heavenly Mother & Father

LOVE

We, of Earth's humanity, are of Truth and Mind, of the Eternal Son and Infinite Daughter. We are of Natural love which we are to perfect.

It is then, with our Heavenly Mother and Father's Divine Love, that when we fuse with our Indwelling Spirit, from Them, we become Celestial.

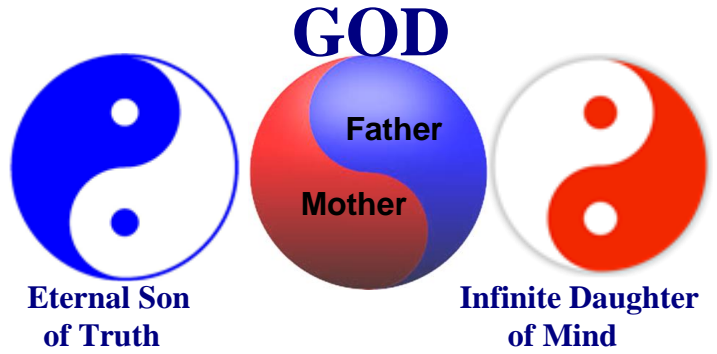
Our personal Indwelling Spirit is without personality, thus our personality remains the one originally bestowed to us by our Heavenly Parents.

Upon becoming Celestial we are of the trinity with LOVE, TRUTH and MIND, and always evolving through our experiences on our journey to Paradise.



SOUL is a DUPLEX

Paradise



Creator Daughter & Son Avonal Daughter & Son Trinity Teacher Pairs
 Creators and Avonals have Spirits of Truth which they may release.
 These three classes of spirits descend from Paradise on assignments and leadership.

Nebadon

Creator
 Daughter & Son

Divine Minister



Avonal
 Daughter & Son

BRILLIANT
 Evening Stars

MELCHIZEDEK

ARCHANGELS

celestial SPIRITS

Creator Daughter & Son are co-regents of Local Universe (3,840,101 humanities).
 Avonal Daughter & Son lead a single humanity out of Rebellion (Earth).
 Trinity Teacher Pairs assist in teaching a humanity through their evolution / healing.
 There are other classes of spirits. It was the Lanonandek spirits that brought about 37 humanities entering Rebellion with Earth also Defaulting through the Adamic assignment partial failure. The Rebellion being only within the System of Satania of which Earth is one of the 37. The Rebellion formally ended on 31 January 2018.

Earth
 Spirit Guides

HUMANITY

Nature Spirits

ANGELS

Formally ended
 31 January 2018

REBELLION & DEFAULT

Past
 200,000 years

and now for the

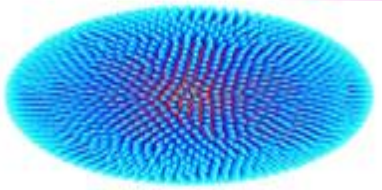
GREAT -Turn

Coming
 1,000 years



Three Layers of Progression Federal, State and Local

**Paradise
Havona**

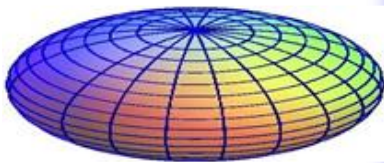


PARADISE

Heavenly Mother and Father }
 Infinite Daughter or Mind } Trinity
 Eternal Son of Truth }

Creator Daughter and Son
 Avonal Daughter and Son
 Trinity Teacher pairs

Within each of 7
 Super Universes
 there are 1,000
 local universes.



Nebadon has 100
 constellations, each
 with 100 local
 systems, which
 each have 1,000
 inhabitable worlds.

LOCAL UNIVERSE of NEDADON

Co-regents Mary & Jesus – Creator
 Daughter and Son (federal oversight of
 3,840,101 humanities)
 Melchizedek order – oversight advisers
 Lanonandek order – system sovereigns
 Lanonandek order – planetary princes
 Adamites order (Adam and Eve)
 There are many orders and classes of
 spirits as well as angels.



Earth's humanity is
 now guided by
 Celestial Spirits.

LOCAL SYSTEM SATANIA contains **EARTH**
 Creator D&S removed system sovereign
 (Lucifer) 26 CE – federal administration.
 Avonal D&S removed planetary prince
 (Caligastia) 1993 CE – state administration.
 Melchizedek plan to end Rebellion and
 Default now executing.
 Earth's Celestial Spirits now guiding Earth's
 humanity out of Rebellion and Default.

EXPERIENCES, FEELINGS and TRUTH:

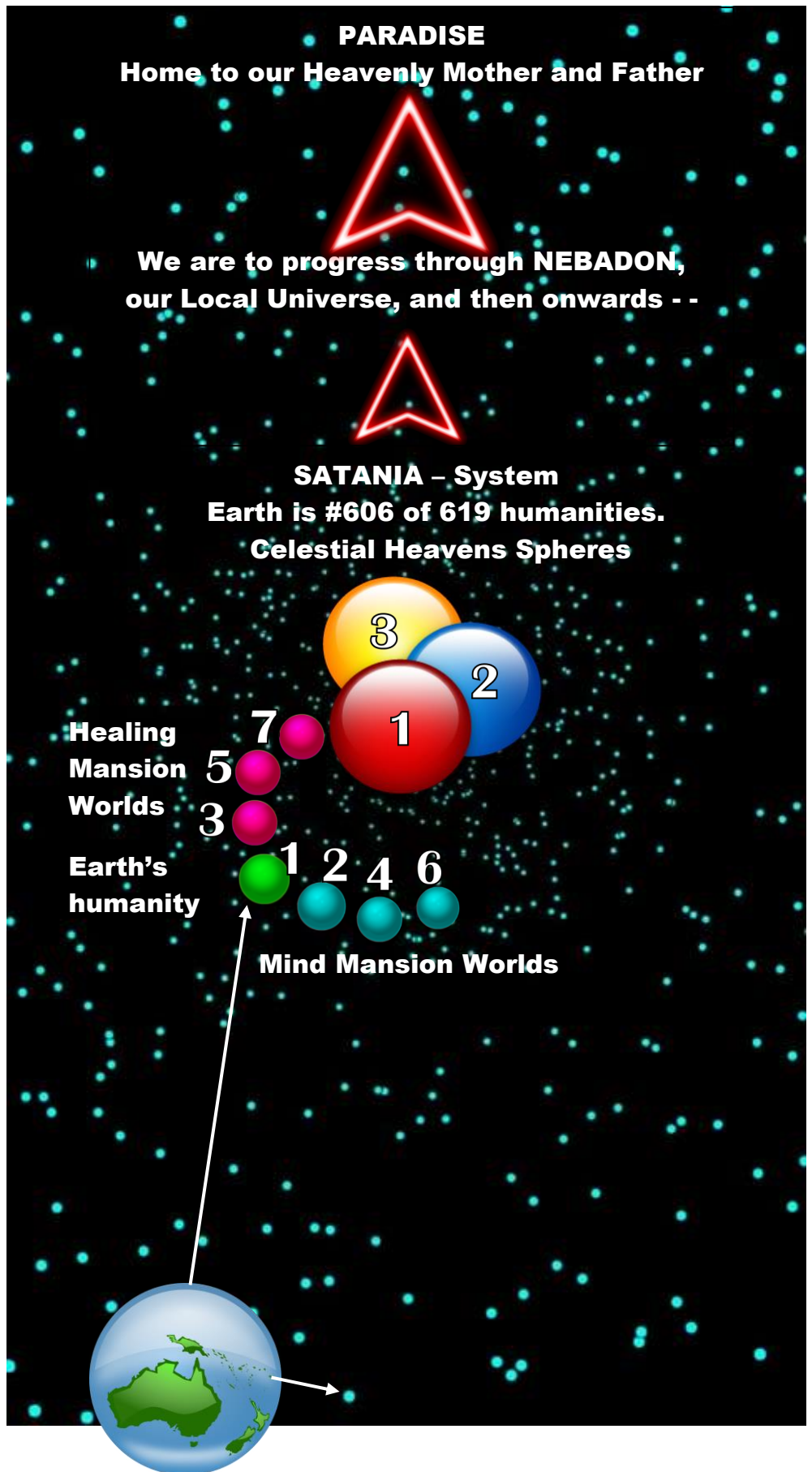
We look into the night sky and see around 1,000 stars that possibly are the hosts to the 619 humanities of our local system, Satania. Earth is on the outskirts of Satania.

When we ‘die’, and shed our physical body as we are spirits having a physical experience, we all arrive on the 1st spirit Mansion World.

If we continue to live through our minds, then we may progress to worlds 2, 4 then 6 and no further – dead end!

Should we embrace Feeling Healing with Divine Love, we will start our journey of Truth and Love, progressing through Healing Mansion Worlds 3, 5 and 7, then through the Celestial Heavens and onwards out through our Local Universe of Nebadon and on to Paradise, the home of our Heavenly Parents.

The spirit worlds are within a different dimension to the physical stars and earths. However picturing the spirit worlds within the centre of our local system is only a visualisation aid and not necessarily accurate.



NEW FEELINGS WAY

The way to Paradise and All-Love is a Feelings Way. The Feeling Way is about honouring – accepting and expressing, and longing for the truth, of all feelings. By doing our Spiritual Healing (Feeling-Healing and Soul-Healing with the Divine Love) we can uncover the truth of why we're living in rebellion against the truth of ourselves. Why we live by denying so many of our feelings; especially our bad ones.

The Way of the Rebellion, The Mind Way, leads ultimately to mind-extinction involving annihilation of personality and soul. The Mind Way is about denying as many feelings as we can, selectively choosing the ones you want, all to maintain control over yourself. And yet by denying feelings and your expression of them, you are denying the truth they would help you see about yourself. So you are denying your own Spiritual Growth Of Truth. All of which can only lead to bad outcomes.

The Mind Way is a Dead End – and only pain. The Feeling Way is eternal growth of Truth, Love and Happiness. By truly embracing our feelings, longing for the truth they are to reveal, we evolve through:

Phase 1: Spiritual Healing through the Mansion Worlds and into the Celestial Heavens.

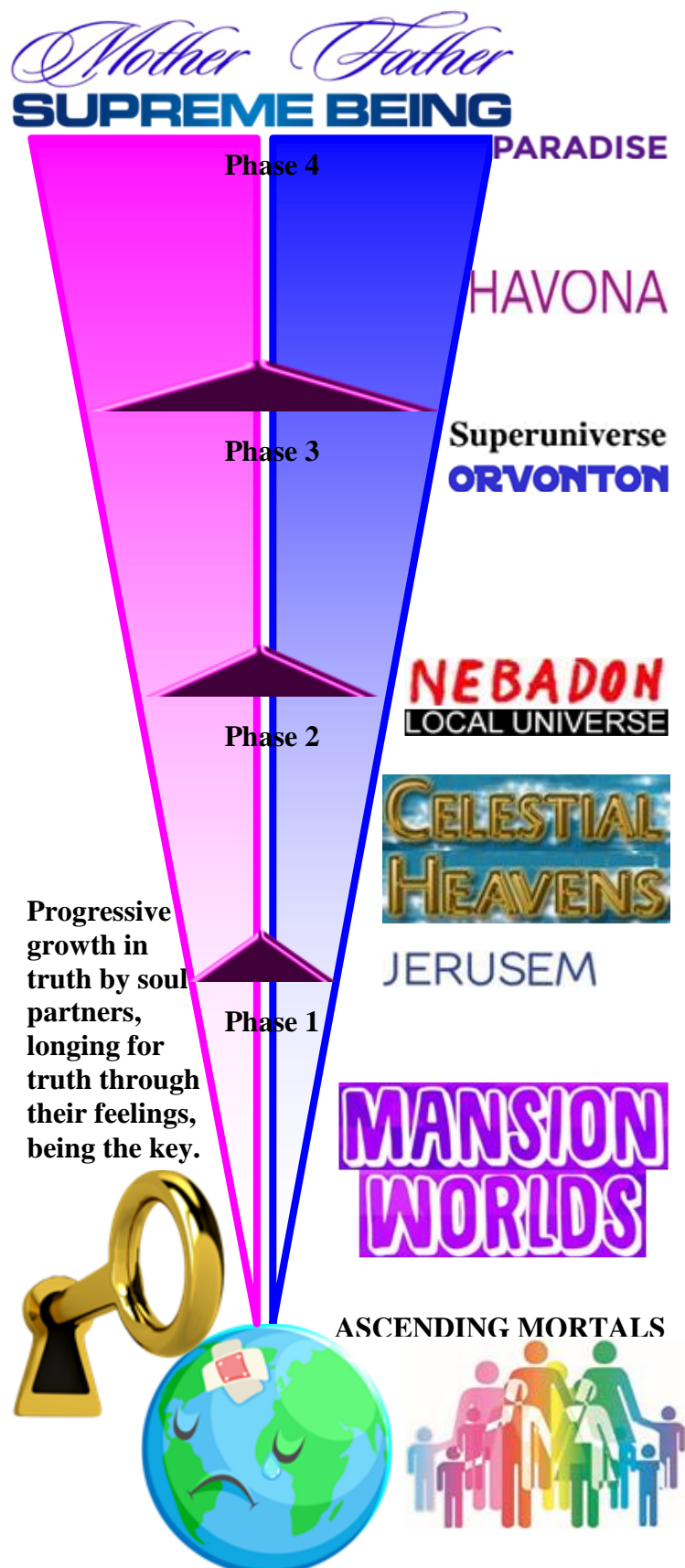
Phase 2: Evolving in Truth through our Local Universe, Neadon, and into the superuniverse: Orvonton.

Phase 3: Truth progression through the superuniverse of Orvonton.

Phase 4: Truth progression through Havona, and attaining Paradise.

ALL Soul and Truth Progression is done by Living True To Our Feelings.

The New Feelings Way.



THE STRAIGHT AND NARROW PATH



Looking for Spiritual pathways using our mind will mean the True Spiritual Pathway will always elude us. We live with our mind suppressing feelings which causes us to not find our true pathway. When we live honouring, accepting, expressing and longing for the truth of our feelings, then we are treading our Spiritual Path of Truth. Truth ONLY comes to us through our feelings. If we deny feelings, we deny truth, and we deny our true spiritual path.

If we fight expressing feelings, pushing them away and blocking them out, we never allow any understanding of those feelings to come to us, thus keeping us in the maze of mind-bending distractions. Many so-called healing therapies say they focus on liberating feelings, however beware that many of these systems are still mind-controlling in 'feelings-clothing'. And we may believe we are getting somewhere with our feelings, only to realise centuries later in the spirit, mind Mansion Worlds that we've still been leading ourselves astray and away from our true feelings.

Surrender and submit willingly allowing our feelings to emerge and be expressed. Long for the truth our feelings are to reveal. Persevere. Allow our feelings to be our way of living. It does not matter how long this takes. For us all, this is our destiny – it is only a question of when?

Once we firmly start living the New Feelings Way – living feelings first; expressing our feelings and longing for the truth they are to reveal, we are on the pathway of ascension; not only out of the Rebellion and Default through our Feeling Healing, and with Divine Love: our Soul Healing – but to Paradise!

By living true to our feelings we will progress through the Celestial Heavens all the way through Nabadon; then on further through our Superuniverse of Orvonton; then into the regions of our Heavenly Mother and Father; embracing the Supreme Being and moving through Havona, eventually attaining Paradise, Their home.

It is the True Way, the New Feelings Pathway, that takes us all the way 'Home'. It is a journey of ever-expanding Truth and Love.



Our Spirit Friends on duty



OUT GATEWAY ISOLATION

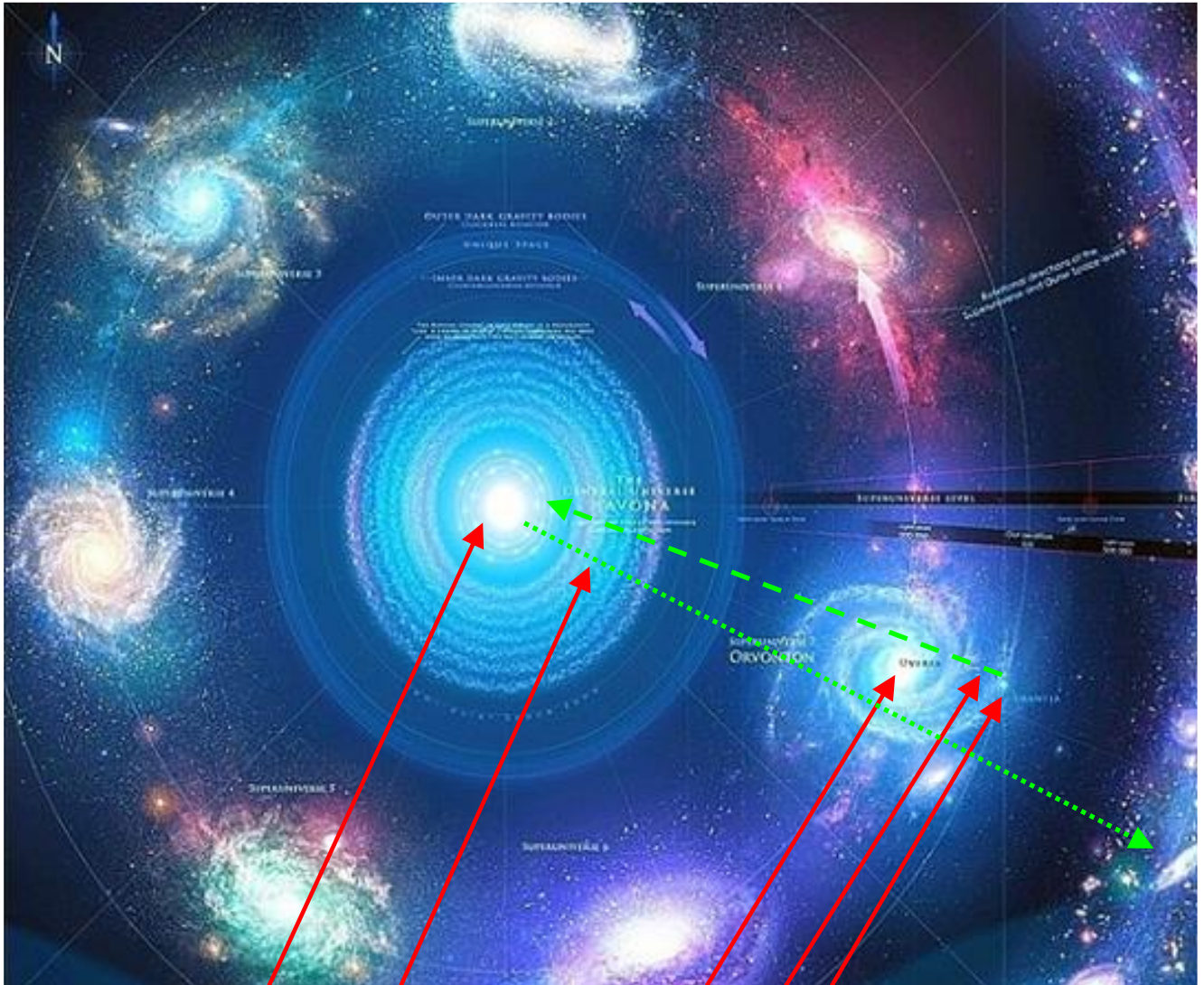


This time, in the history of humanity, is the most exciting time ever experienced.

Finaliters

OUR JOURNEY

Ascension is from Earth (Urantia) through Nebadon, Orvonton, Havona to Paradise.
 Then in Paradise we progress to be Finaliters and possibly assigned to a newly forming universe.



Isle of Paradise home of our Heavenly Mother & Father
 Havona Ascendington
 Orvonton – our Super Universe
 Nebadon – our Local Universe
 Uranta being Earth

Finaliter, being what we become when we finally arrive in Paradise!



THE
GREATEST
SHOW
is ON EARTH

The text is centered and features a playful, stylized font. The words 'GREATEST' and 'SHOW' are in large, bold, multi-colored letters (green, yellow, red). 'THE' is in smaller red letters above 'GREATEST', and 'is ON EARTH' is in smaller red letters below 'SHOW'. On either side of the main text are two large, stylized eyes with blue irises and black outlines, looking towards the center.

From this:



To this:

SUPERKIDS

Natural self Expression through Feelings

Self Empowering

Self Revealing

Self Loving



Feelings First

Primary recommended reading:	consider commencing with: Paul – City of Light and Sage – and the Healing Angels of Light		
The Rejected Ones	2002 – 2003	xxx	– James Moncrief
Messages from Mary & Jesus	2003	xxx	– James Moncrief
Soul Light from Zelmar Melchizedek	2003	xxx	– James Moncrief
Paul – City of Light	2005	xxx	– James Moncrief
Feeling Healing	2017		– James Moncrief
Religion of Feelings	2017		– James Moncrief
Mary Magdalene and Jesus' comments on the Padgett Messages	2007 – 2010	xxx	– James Moncrief
Speaking with Mary Magdalene & Jesus Sage and the Healing Angels of Light	2013 – 2014	xxx	– James Moncrief
Road map of Universe and history of Universe:	2017	xxx	– James Moncrief
The Urantia Book	1925 – 1935	xxx as primary reading	
Divine Love supporting reading:			
Revelations	1954 – 1963		– Dr Daniel Samuels
Judas of Kerioth	2001 – 2003		– Geoff Cutler
The Book of Truths containing the Padgett Messages or Little Book of Truths	1914 – 1923	xxx	– Joseph Babinsky
True Gospel Revealed anew by Jesus Vol I, II, III, IV		xxx	– Geoff Cutler
Available generally from:			
www.lulu.com	www.amazon.com	www.bookdepository.com	
For Divine Love focused websites and forums:			
Pascas Health:	http://www.pascashealth.com/index.php/library.html		
Spiritual Development:	http://new-birth.net/spiritual-subjects/		
Padgett Books:	http://new-birth.net/padgetts-messages/		
http://divinelovesp.weebly.com/my-free-books-and-free-padgett-messages.htm			

BIBLIOGRAPHY NOTE:

James Moncrief has written numerous books and prepared numerous movie scripts. Incorporated here are primary writings.

Pascas has 550+ supportive 'Pascas Papers' accessible in Library Download at www.pascashealth.com

Pascas Primary publications being:

- U-Turn for Humanity Pascas reveals New Feelings Way
- U-Turn for Humanity pathway being New Feelings Way
- U-Turn for Humanity shutting hells through New Feelings Way
- U-Turn for Humanity through the New Feelings Way
- U-Turn for Humanity treacherous assumptions New Feelings Way
- U-Turn for Humanity unfolding the New Feelings Way
- Universal Gift – Feeling Healing with Divine Love
- Feeling Healing and Divine Love Discussion Prompts
- Pascas Care Death & Dying Transition & Assimilation Marjorie

Selected Pascas Papers, as noted below, can be downloaded from www.pascashealth.com from within the Library Download page.

James Moncrief's books, the Padgett Messages and The Urantia Book at:

DIVINE LOVE SPIRITUALITY – DLS:

<http://divinelovesp.weebly.com/my-free-books-and-free-padgett-messages.html>

All Padgett Messages (for condensed versions – see below) 1914 – 1923 Pages 945
The Urantia Book (see suggested papers to read below)

James Moncrief Books:

	MoC		
The Rejected Ones – the Feminine Aspect of God	1,490	Nov 2002 – Jan 2003	228
Messages from Mary and Jesus book 1	1,485	Feb – Apr 2003	189
Messages from Mary and Jesus book 2	1,485	Apr – Oct 2003	170
Soul Light from Zelmar, a Melchizedek, books 1 and 2	1,480	May – Sep 2003	480
Mary Magdalene and Jesus' comments on the Padgett Messages – book 1		Aug 2007	164
Messages from 31 May 1914 – 12 January 1915	1,495		
Mary Magdalene and Jesus' comments on the Padgett Messages – book 2		Sep 2010	177
Messages from 13 January 1915 – 29 August 1915	1,494		
Speaking with Mary Magdalene and Jesus blog – book 1	1,490	Jan – Apr 2013	206
Speaking with Mary Magdalene and Jesus blog – book 2	1,489	Apr – May 2013	229
Speaking with Mary Magdalene and Jesus blog – book 3	1,490	Oct – Jan 2014	187
Speaking with Mary Magdalene and Jesus blog – book 4	1,491	Jan – May 2014	191
Mary Magdalene comments on Revelation from the Bible KJV	1,485	Dec 2013 – Jan 2014	84
		This group being pages of	2,305

Paul – City of Light	1,488.5	2005	149
Ann and Terry		2013	235
Feeling bad? Bad Feelings are GOOD!	feeling-healing book 1	2006	179
Feeling bad will make you feel BETTER – Eventually!	feeling-healing book 2	2006	159
Breaking the Golden Rule.	feeling-healing book 3	2006	168
Feeling-Healing exercises, and other healing points to consider.		2009	175
Cathy and Mark – a novel introducing Feeling-Healing.		2010	151
Introduction course to Divine Love Spirituality		2006	139
Speaking with the Dead, Death and Dying		2009	173
Spirits and their Childhood Repression Healing		2010	179
With Verna – a nature spirit		2008	279
Communication with spirits – meet a spirit friend		2010	37
Introduction to Divine Love Spirituality website			362
Sage – and the Healing Angels of Light		2017	260
Divine Love Spirituality	1,500	2017	201
Feeling Healing – you can heal yourself through your feelings		2017	153
Religion of Feelings	1,500	2017	47

This group being pages of 3,046

Religion of Feelings

<http://religionoffeelings.weebly.com/>

Introduction to Divine Love Spirituality

<http://dlspirituality.weebly.com/>

Main website of DLS

<http://divinelovesp.weebly.com/>

Childhood Repression website

<http://childhoodrepression.weebly.com/>

DLS and CR forum

<http://dlscr.freeforums.net/>

<http://withmarymagdaleneandjesus.weebly.com/blog---and-free-books-speaking-with-mary-and-jesus>

FEELING HEALING and SOUL HEALING with the DIVINE LOVE:**James Moncrief Publications:****all publications are free downloads:**<http://divinelovesp.weebly.com/my-free-books-and-free-padgett-messages.html>

It is suggested for one to consider reading as follows:

Speaking with Mary Magdalene and Jesus – books 1 – 4

These four books encapsulate the second of the revelations with the first having been introduced by James Padgett one hundred years previously. These four books provide a wide range of guidance that has never previously been made available.

Soul Light – books 1 and 2

A Melchizedek, Zelmar, sums up how we are to heal ourselves and ascend to Paradise.

Paul – City of Light

As a gentle intro into the Divine Love and Healing; being James Moncrief's first novel.

Ann and Terry

An example for people who might want to immediately start working on themselves and doing their Healing.

Feeling Bad? Bad Feelings are GOOD

For more understanding about our denial of our feelings and why we should not deny our feelings, and it includes how it all came about for James, using himself as an example.

Feeling bad will make you feel BETTER – Eventually!

This includes specific examples of Marion and James working on expressing particular bad feelings, again with the hope that it will help others gain something of an idea as to what's involved in doing your Feeling Healing.

Sage – and the Healing Angels of Light

Through Sage who's 13 years old, the story is primarily about the two aspects of healing; that being, with the help of our angels, and the full Healing we can do by looking to our feelings for their truth.

**Religion of Feelings
Feeling Healing**

**Welcome to LOVE – the Religion of Feelings
you can heal yourself through your feelings**

So these books, including the four Speaking with Mary Magdalene and Jesus books, provide the essence of it all and are examples of James' work. Then it's up to whatever takes one's fancy. Other reading to consider may include:

The Padgett Messages being published as:**The True Gospel Revealed Anew by Jesus volumes 1 – 4****Book of Truths by Joseph Babinsky****The Urantia Book**

Release one's pain through expressing one's feelings.

in conjunction with

Longing for the Truth when also longing for Divine Love.

FEELING HEALING with DIVINE LOVE is SOUL HEALING:

A collection of 'papers' that draw together specific topics including all of the above and more from other sources of information and revelation designed to help increase one's awareness about why we have the problems we do and how to heal them, all whilst living a more healthy and sustainable life. They provide a brief snapshot of the more complicated topics and issues.

Firstly, consider discovering the truth of your emotional pain through Feeling Healing. Secondly, consider longing for our Heavenly Parents' Love as you progress with your healing. Primary and most important readings are the writings of James Moncrief. Then consider the Padgett Messages, and then The Urantia Book.

Pascas Papers, being free, are located within the Library Download www.pascashealth.com
<http://www.pascashealth.com/index.php/library.html>

PASCAS – document schedule.pdf downloadable index to all 550+ Pascas Papers.

FH denotes Feeling Healing; SH denotes Soul Healing, which is: Feeling Healing with the Divine Love; DL denotes Divine Love – living with the Love.

PASCAS INTRODUCTION NOTES: *All papers below can be found at Library Download link.*

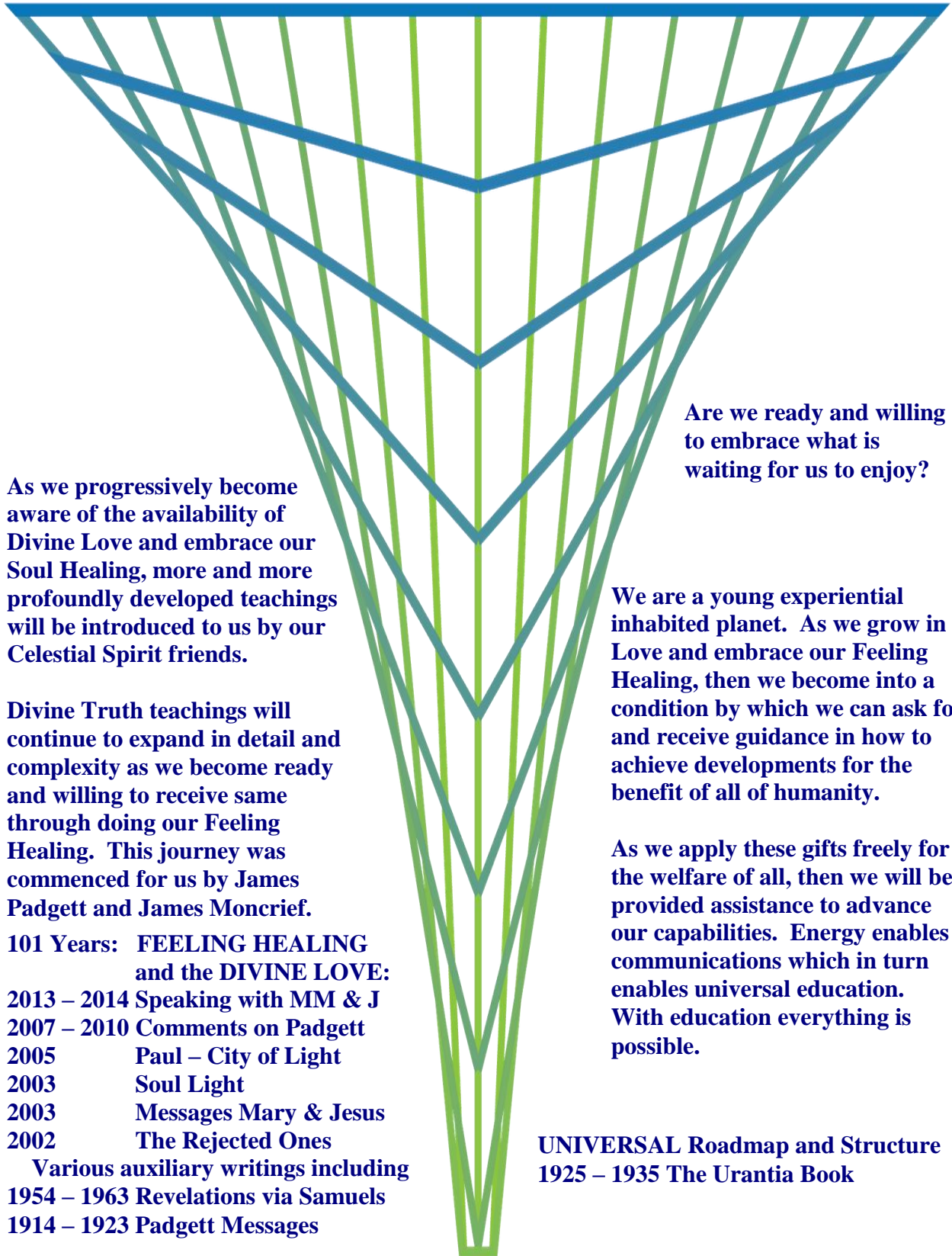
- Pascas Care Letters A Huge Upturn
- Pascas Care Letters Big Revelation
- Pascas Care Letters Feeling Healing Benefits Children
- Pascas Care Letters Feeling Healing Way
- Pascas Care Letters Little Children
- Pascas Care Letters Women's Liberation and Mother

MEDICAL – EMOTIONS:

- Pascas Care – Feeling Healing
- Pascas Care – Feeling Healing All is Within
- Pascas Care – Feeling Healing and Health
- Pascas Care – Feeling Healing and History
- Pascas Care – Feeling Healing and Parenting
- Pascas Care – Feeling Healing and Rebellion
- Pascas Care – Feeling Healing and Starting
- Pascas Care – Feeling Healing and Will
- Pascas Care – Feeling Healing Angel Assistance
- Pascas Care – Feeling Healing Being Unloved
- Pascas Care – Feeling Healing Child Control
- Pascas Care – Feeling Healing Childhood Repression
- Pascas Care – Feeling Healing End Times
- Pascas Care – Feeling Healing is Rebellious
- Pascas Care – Feeling Healing Live True
- Pascas Care – Feeling Healing Mary Speaks
- Pascas Care – Feeling Healing My Soul
- Pascas Care – Feeling Healing Perfect State
- Pascas Care – Feeling Healing Revelations X 2
- Pascas Care – Feeling Healing the Future
- Pascas Care – Feeling Healing Trust Yourself
- Pascas Care – Feeling Healing Versus Cult

**PASCAS
PAPERS**

DIVINE LOVE and DIVINE TRUTH Revelations and Teachings escalating:



A photograph of two young boys playing in a stream. One boy is holding a large green leaf over both of them as an umbrella. They are both smiling and splashing water. The background is lush green foliage.

Great Gifts through our Feelings are:

**The Awareness of our Heavenly Mother
and Father**

**That our soul is a duplex – both male
and female – one soul, two personalities**

**That Feeling Healing with Divine Love
is our pathway to Paradise – our true
home**

**Freely expressing our Feelings to a
companion is expressing our true
personality – the personality bestowed
upon us by our Heavenly Mother and
Father – our true Mum and Dad!**

**These are truths of living
Feelings First Spirituality,
The New Way**

Healed potential



Insightful Genius

Brilliance!

DYNAMIC

vibrant

perceived truth MoC 880 – relative truth potential MoC 1,480